

Teichert Shifler Mining and Reclamation Project

Esparto Citizens Advisory Committee Meeting

Tuesday, October 19, 2021

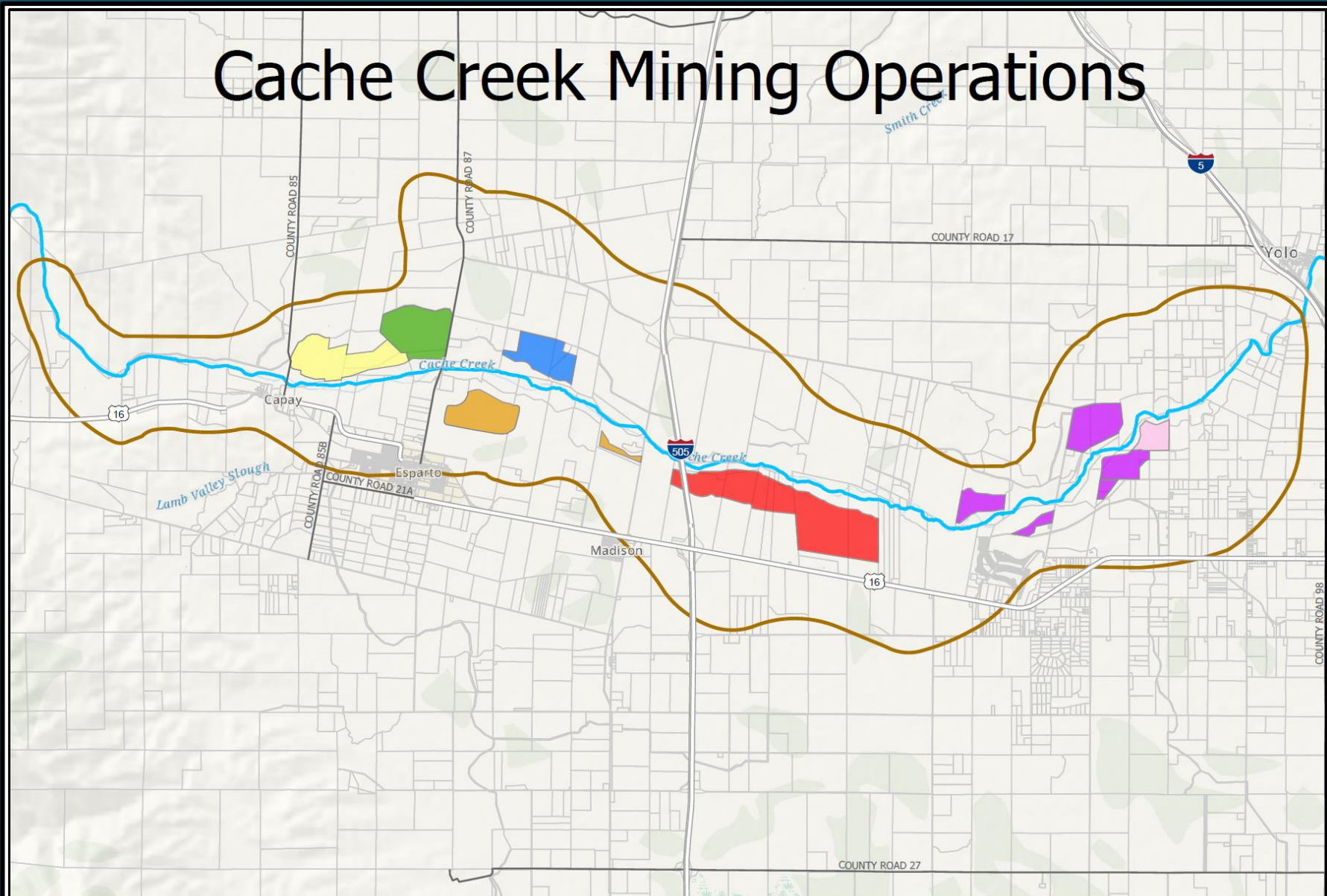
REQUESTED ACTIONS

- Receive presentation from staff
- Questions and discussion (staff, applicant, and consultants available)
- Esparto CAC recommendation on project

PROJECT PROPOSAL

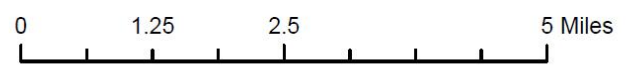
- Proposed project site – 319 acres of 442-acre Shifler property
- Proposed mining area – 264 acres (other mining-related activity on 55 acres)
- Mining of 35.4 mil tons total (30.0 mil tons sold) over 30 years
- Maximum mining of 2.6 mil tons annually (2.2 mil tons sold) with 20% Exceedance
- Transfer of tonnage allocation from Esparto and Schwarzgruber permits
- Mining depths of 40 to 110 feet
- Authorize mining within Streamway Influence Zone
- Processing to occur at Teichert Woodland Plant
- No change in approved haul route or hours of operation
- Reclamation to agriculture, lake, and habitat

Cache Creek Mining Operations



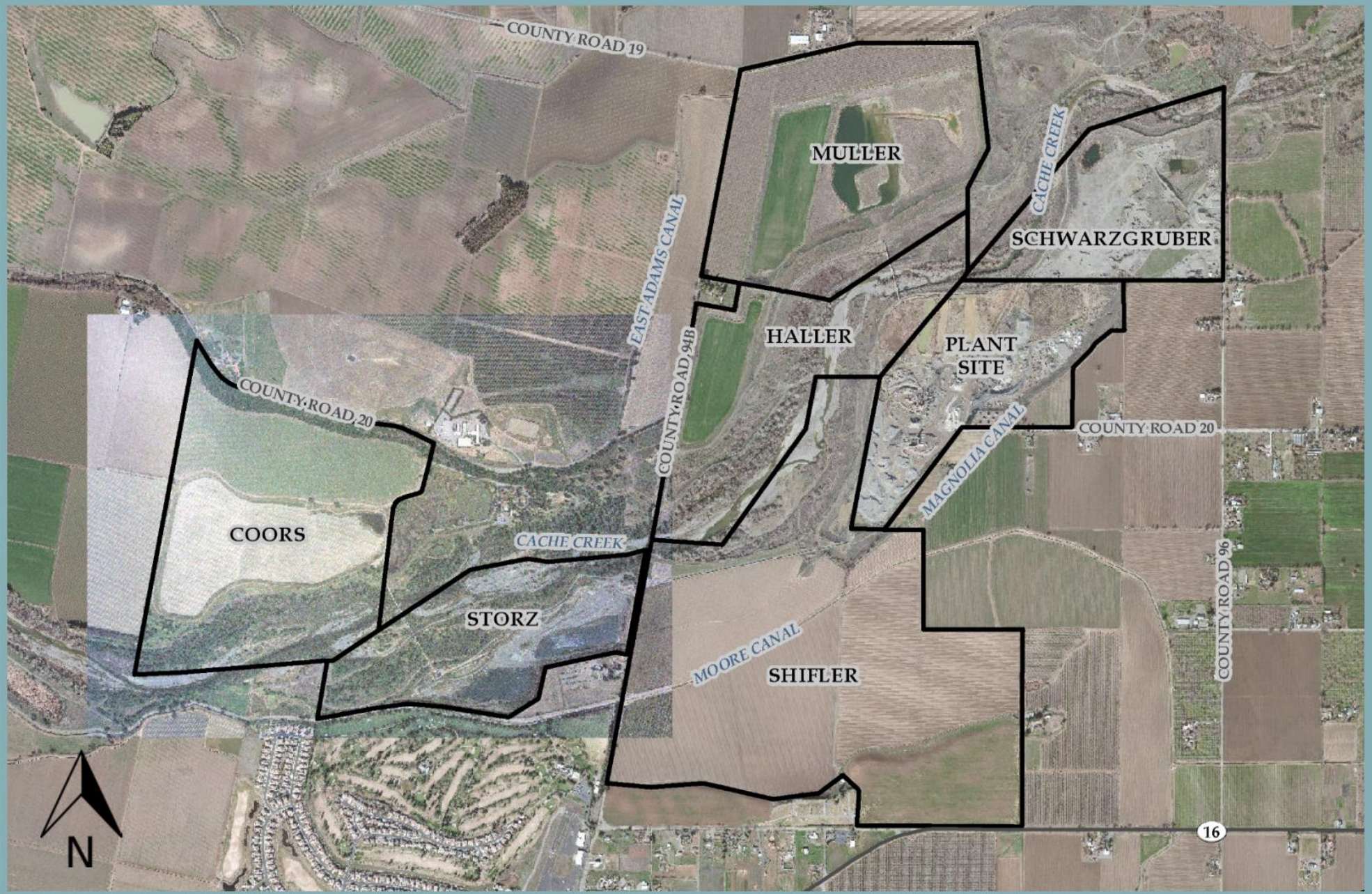
Legend

- | | | |
|--------------------------------|-----------------|------------------------|
| Highways | Parcels | Syar |
| Roads | Cemex | Teichert Esparto |
| Cache Creek | Granite Capay | Teichert Woodland |
| Cache Creek Area Plan Boundary | Granite Esparto | Teichert Schwarzgruber |

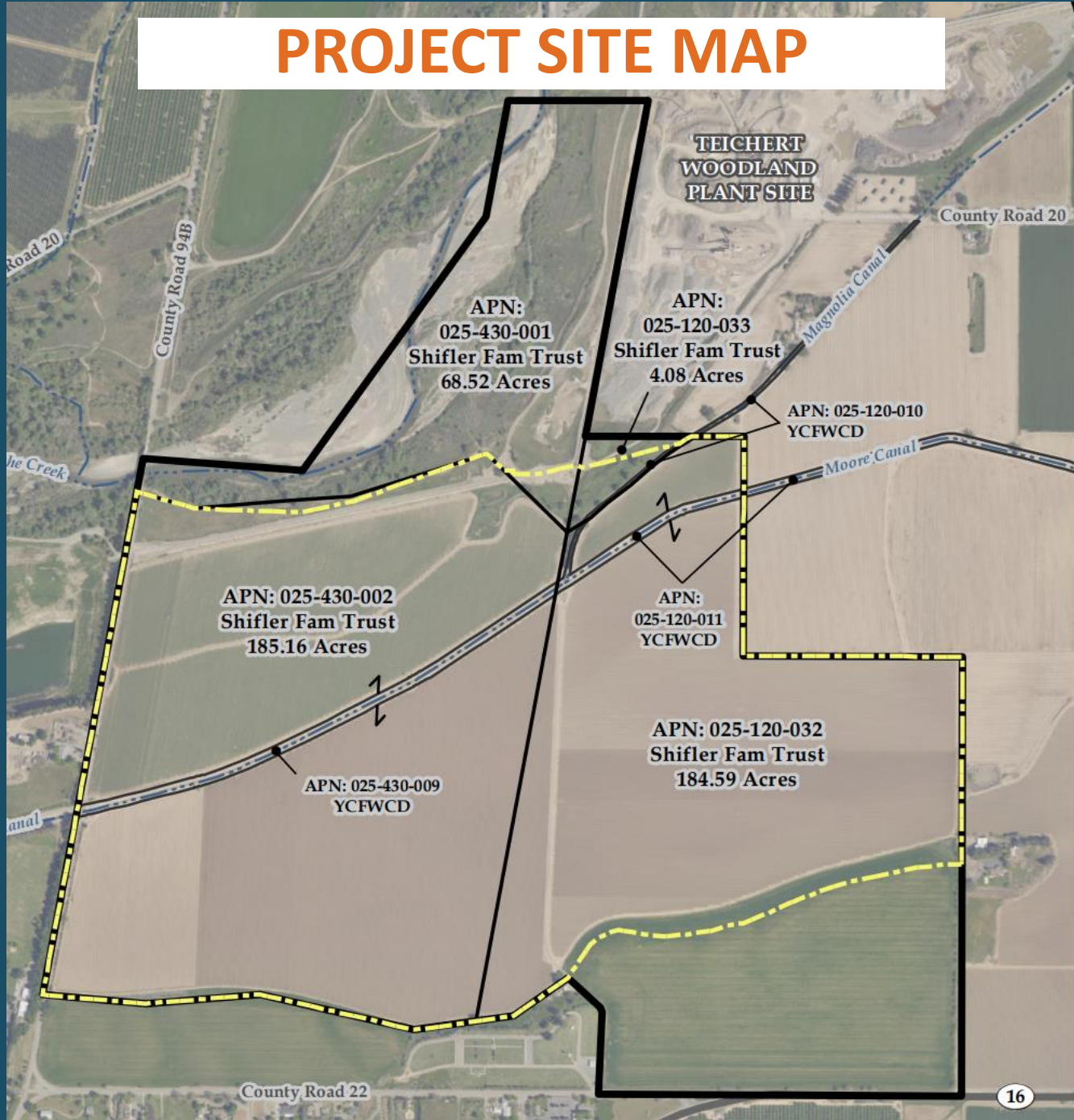


Printed: 10/11/2021

**Figure 3-2
Project Area**



PROJECT SITE MAP



PROPOSED MINING PLAN

NOTE: FOR DETAILS AND CROSS SECTIONS SEE MINING EXHIBITS

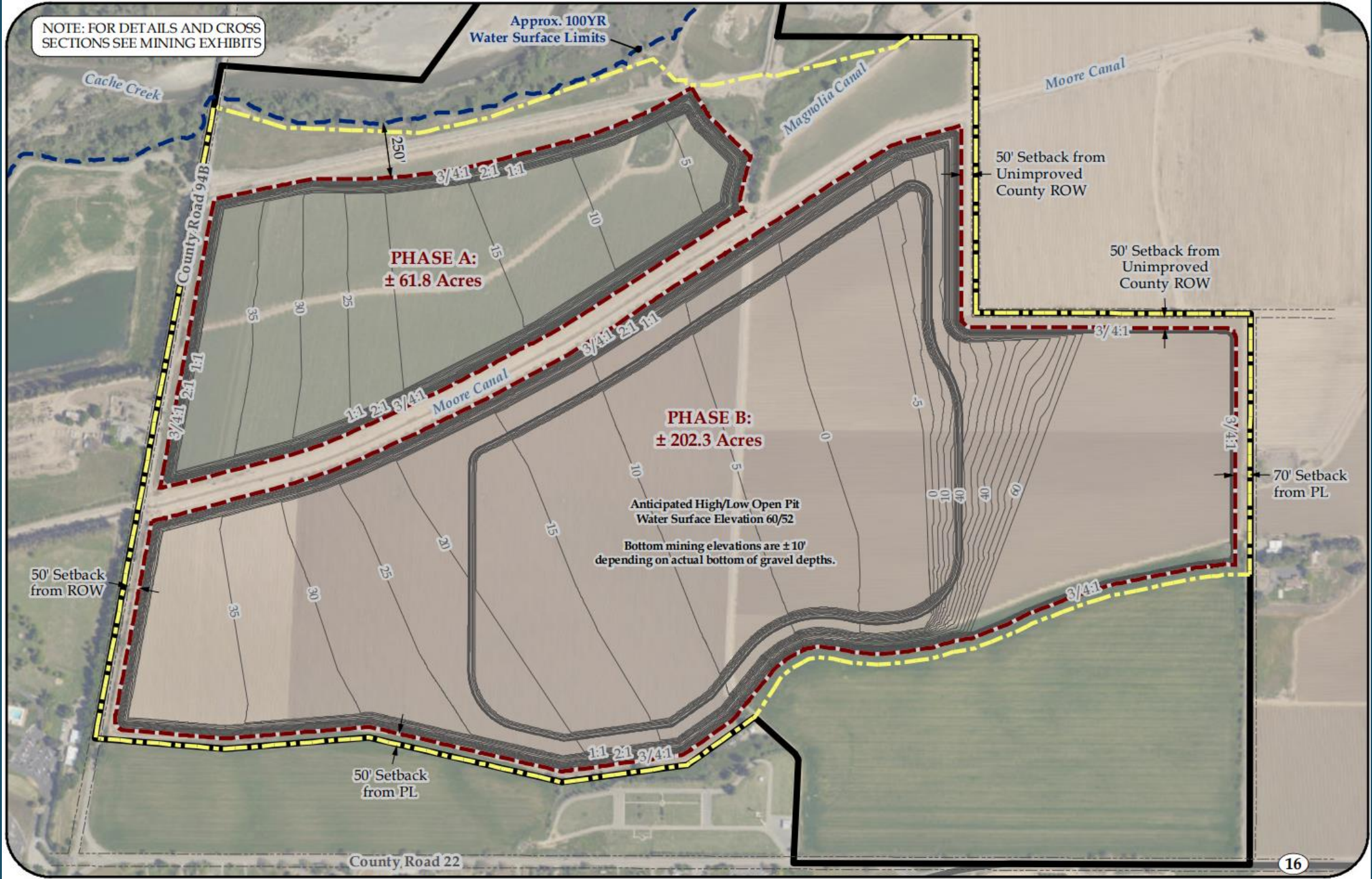


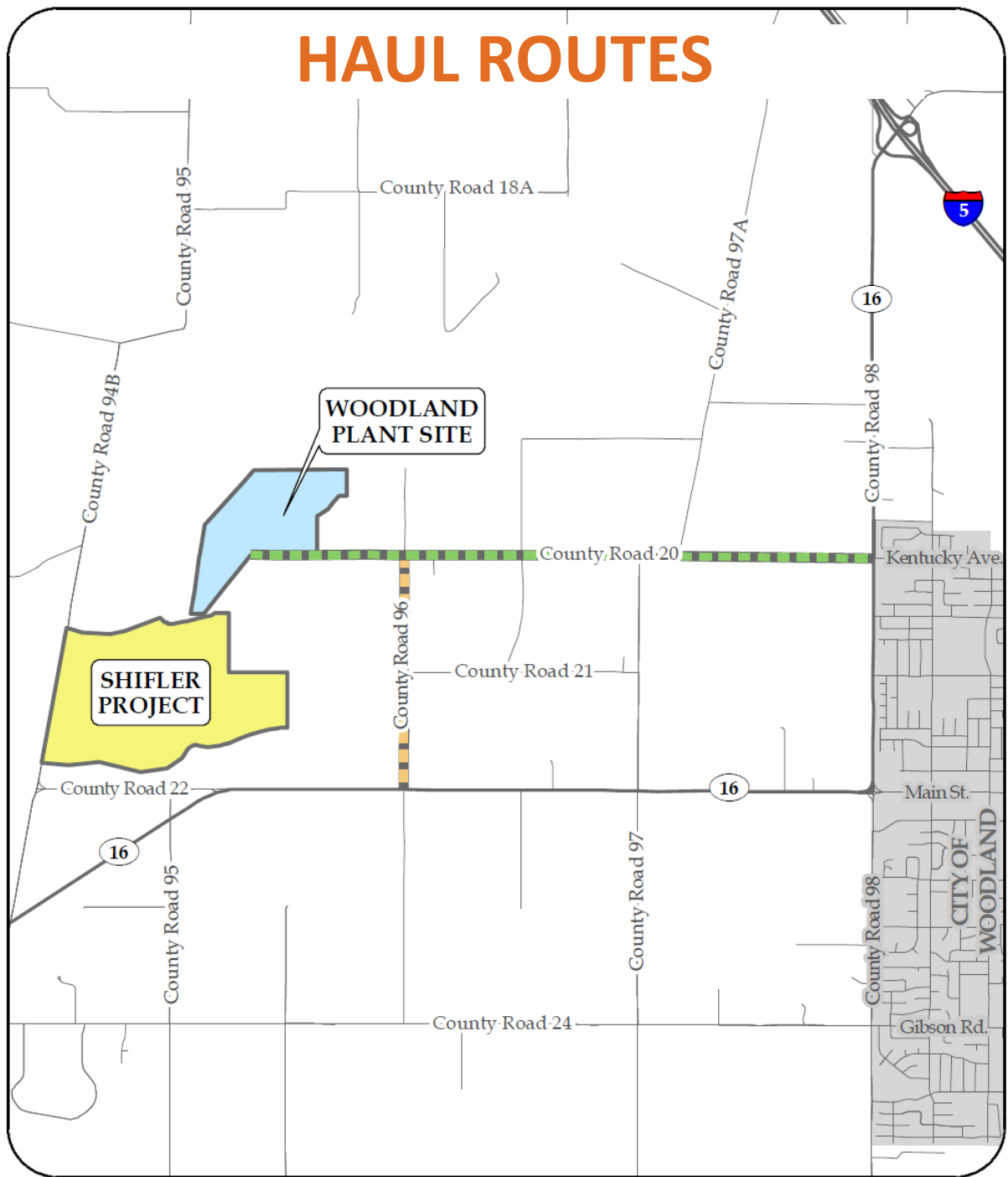
Figure 4.8-1

Cache Creek at Shifler Site with Proposed Streambank Stabilization Plan Components Shown



Source: FlowWest. Technical Memorandum: Cache Creek TAC Review Of Teichert Shifler Mining And Reclamation Project. December 3, 2020.

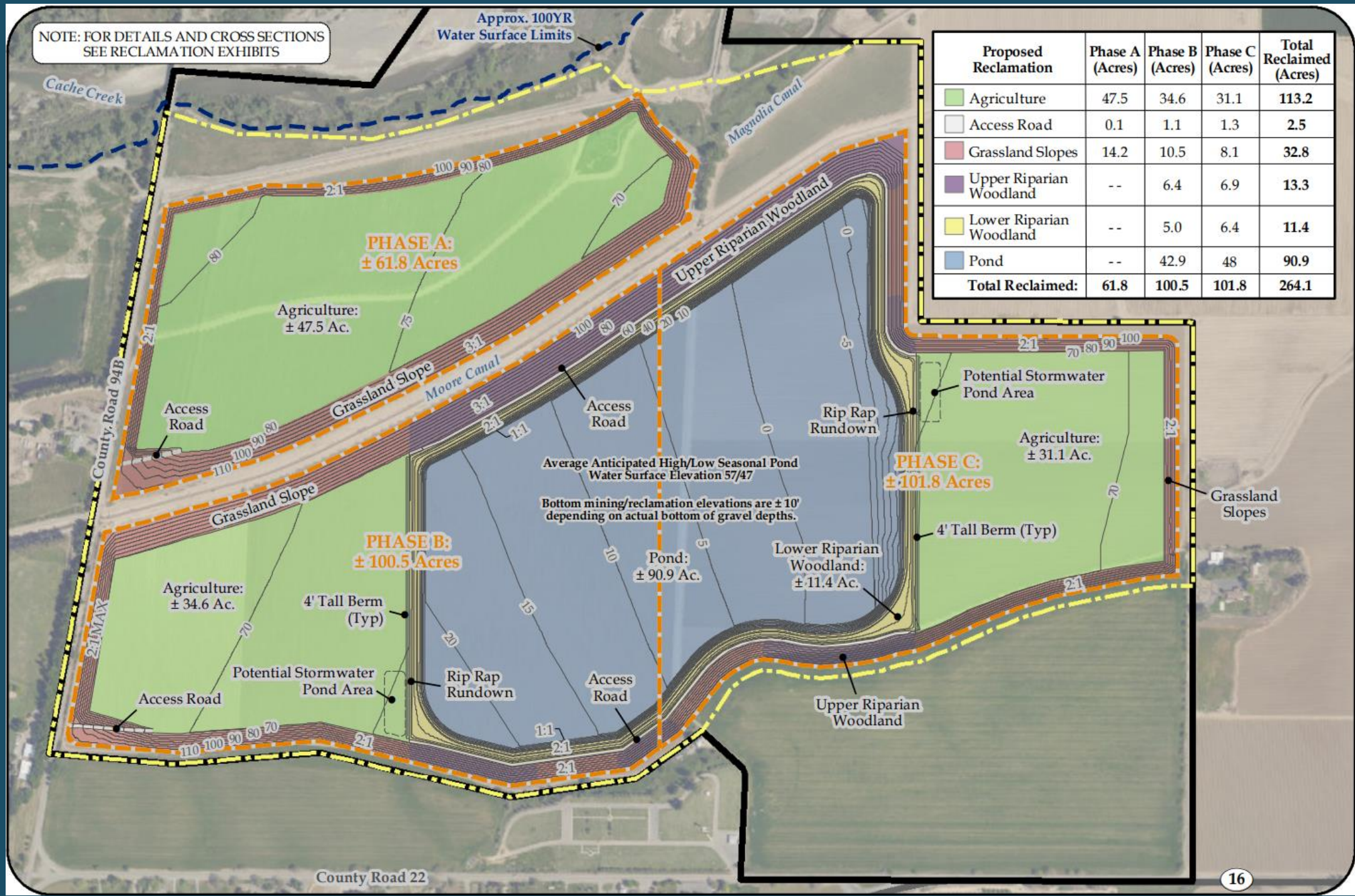
HAUL ROUTES



PROPOSED RECLAMATION PLAN

NOTE: FOR DETAILS AND CROSS SECTIONS SEE RECLAMATION EXHIBITS

Approx. 100YR Water Surface Limits



Proposed Reclamation	Phase A (Acres)	Phase B (Acres)	Phase C (Acres)	Total Reclaimed (Acres)
Agriculture	47.5	34.6	31.1	113.2
Access Road	0.1	1.1	1.3	2.5
Grassland Slopes	14.2	10.5	8.1	32.8
Upper Riparian Woodland	--	6.4	6.9	13.3
Lower Riparian Woodland	--	5.0	6.4	11.4
Pond	--	42.9	48	90.9
Total Reclaimed:	61.8	100.5	101.8	264.1

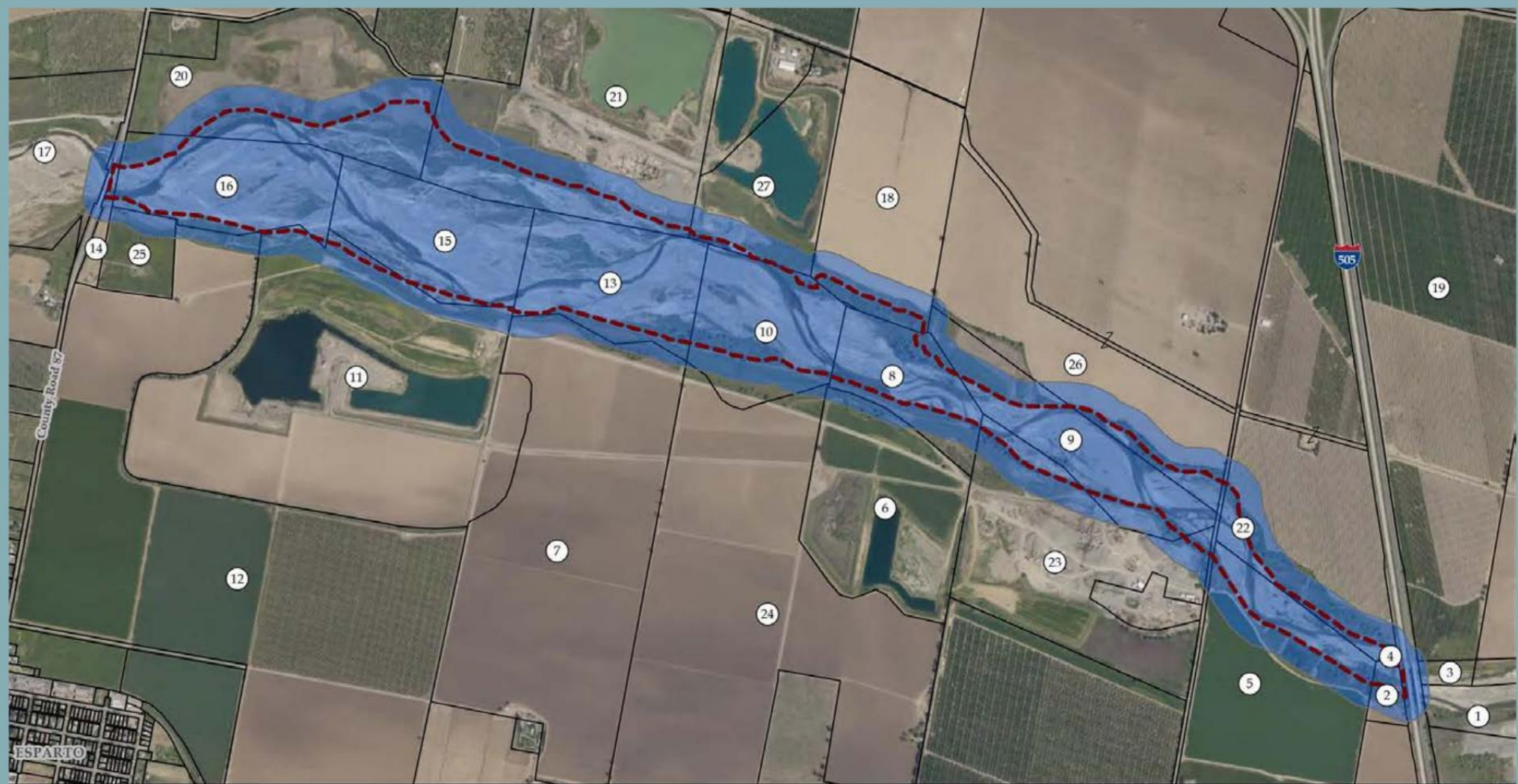
County Road 22

DEVELOPMENT AGREEMENT

PUBLIC BENEFIT ITEMS ('NET GAINS')


- In-Channel Maintenance -- Bar Skimming (CR 87 to I-505)
- Property Dedications
 - Shifler Lake
 - Shifler In-Channel
 - Schwarzgruber
- Cash Donations to Nature Preserve and Parkway Plan
- Safe Pedestrian Crossing of CR 94B for Trail Connection
- Woodland Plant as Sales Tax Place of Sale
- Early Dedication of Teichert In-Channel Haller/Muller
- Enhanced Reclamation of County Borrow Site Property
- Future Trail from Muller Bridge to Schwarzgruber Property
- Removal of Restrictions on Muller Access "B"

**Figure 3-18
In-Channel Bar Skimming**



LEGEND:

 300 Ft Buffer

 In-Channel Bar Skimming Project Limit
± 422.61 Acres

 Parcel Boundaries

SOURCE:

Parcel Boundaries Provided by Yolo County GIS (2020)

Parcel Ownership Provided by ParcelQuest
(November 2020)

Aerial Photography Provided by ESRI Basemap & Affiliates
(Yolo County: April 13, 2018)

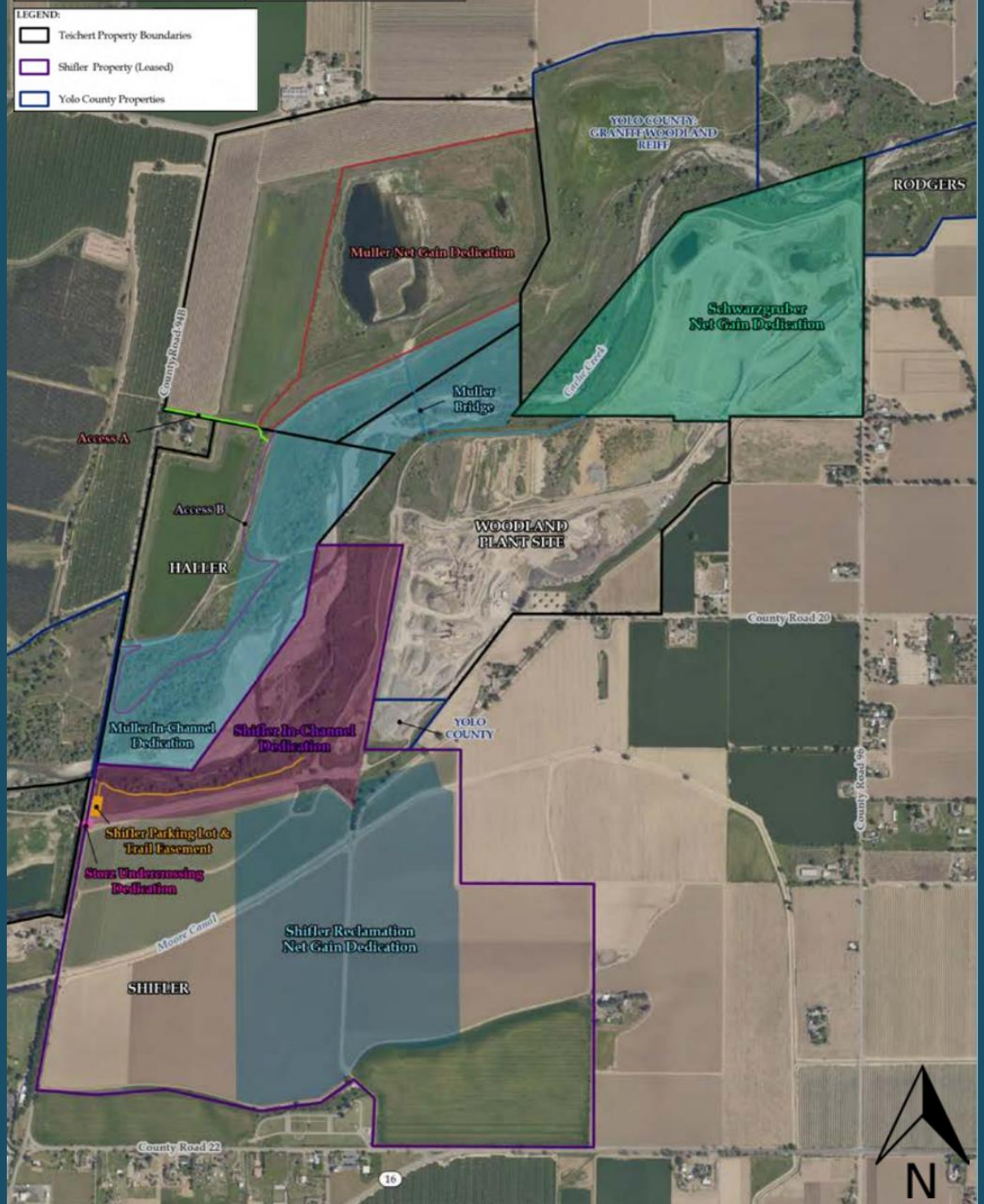


0 600 1,200 Feet

DISCLAIMER:

The data was mapped for assessment purposes only. No liability is assumed for the accuracy of the data shown.

DEDICATION OF RECLAIMED LANDS

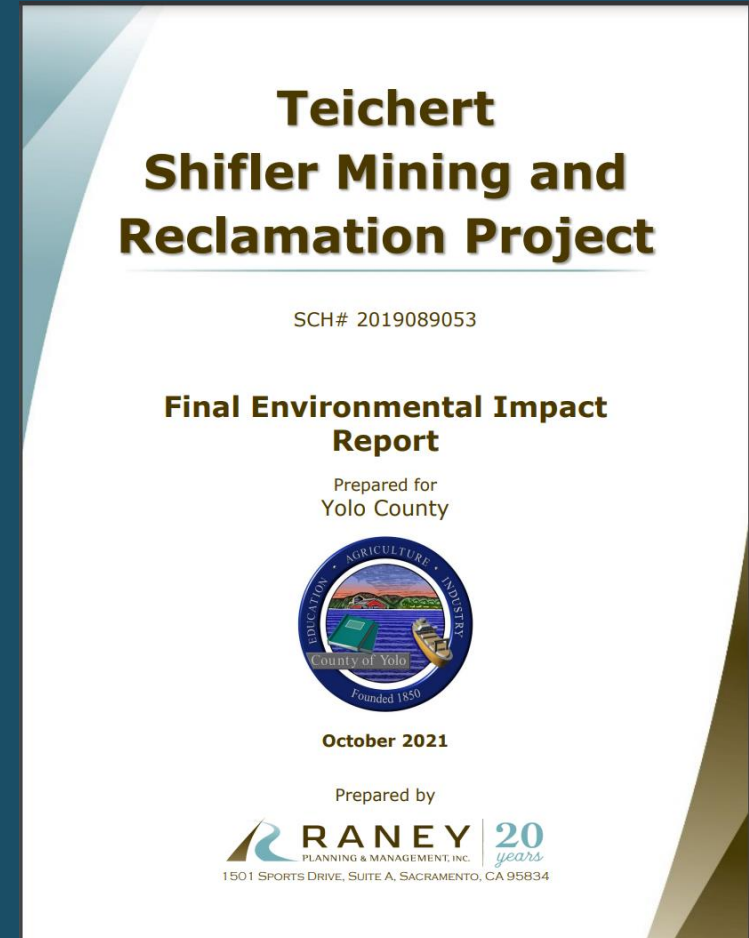


BACKGROUND

- Cache Creek Area Plan (plans, policies, regulations)
- Teichert Woodland Approvals (Plant – 1950's, Mining – 1996)
- Teichert Esparto Approval (1996)
- Teichert Schwarzgruber Approval (2012)
- Shifler Application -- Moore Canal Relocation

ENVIRONMENTAL IMPACT REPORT

- Draft EIR Released – December 11, 2020
- Final EIR Released – October 15, 2021
- Comments Re: Project Merits
- Property Value Considerations
- Transportation and Circulation
- Hydrology and Water Quality
- Agricultural Considerations
- Summary of EIR



TEICHERT SHIFLER APPROVALS

- Certification of EIR
- General Plan Amendment
- Rezoning
- Mining Permit
 - Allocation Transfer
 - 20% Exceedance
 - Mining within Streamway Influence Zone
- Reclamation Plan
- Development Agreement
- Staff Recommendation

NEXT STEPS

- October 19 Esparto Citizens Advisory Committee
- October 25 Monument Hills Community Meeting
- November 10 Planning Commission
- December 7 Board of Supervisors

Project information can be accessed online at:

www.yolonaturalresources.org

