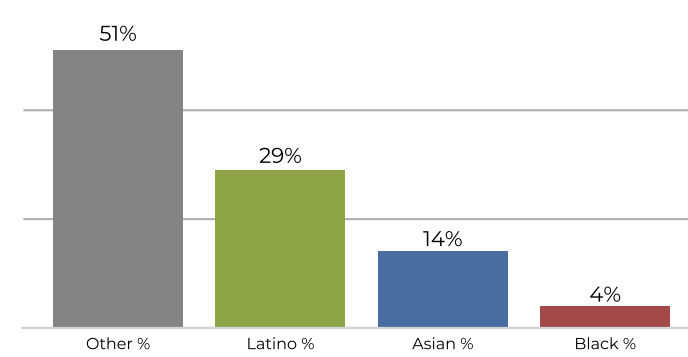
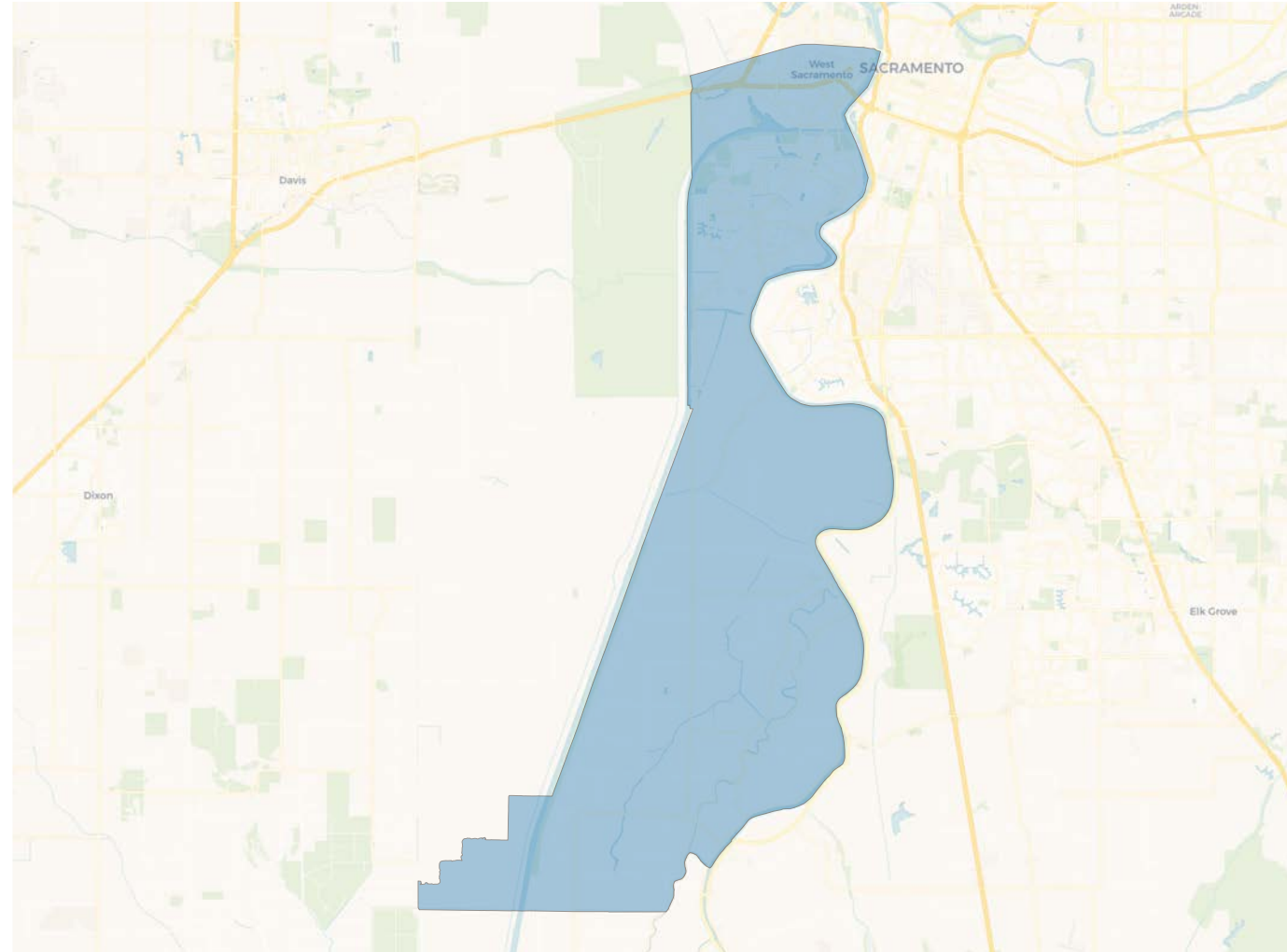
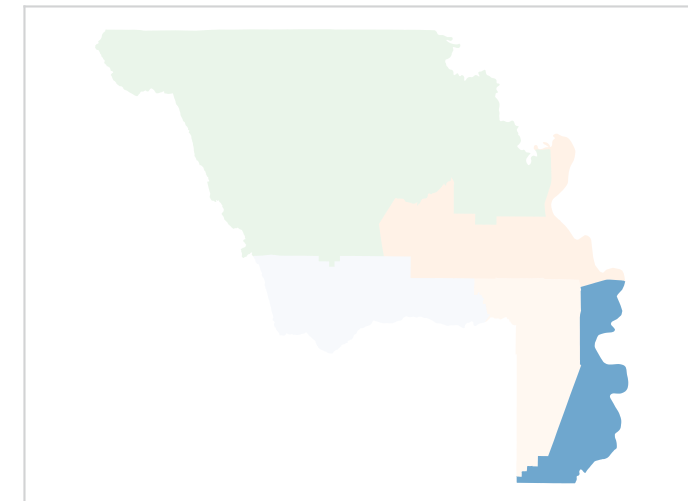
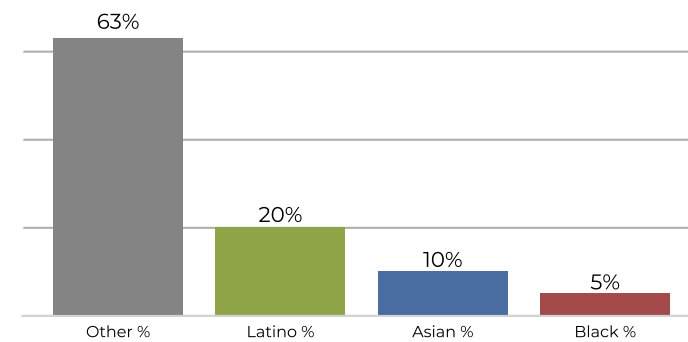


2020 Census

	1	2	3	4	5
Population	42,747	44,156	43,766	42,744	43,509
Deviation	-637	772	382	-640	125
Deviation %	-1.5%	1.8%	0.9%	-1.5%	0.3%
Other	22,129	24,944	21,759	24,992	15,472
Other %	51.8%	56.5%	49.7%	58.5%	35.6%
Latino	12,431	10,419	17,531	7,410	24,157
Latino %	29.1%	23.6%	40.1%	17.3%	55.5%
Asian	6,163	7,790	3,527	9,347	3,054
Asian %	14.4%	17.6%	8.1%	21.9%	7.0%
Black	2,024	1,003	949	995	826
Black %	4.7%	2.3%	2.2%	2.3%	1.9%

Citizen Voting Age Population (CVAP)

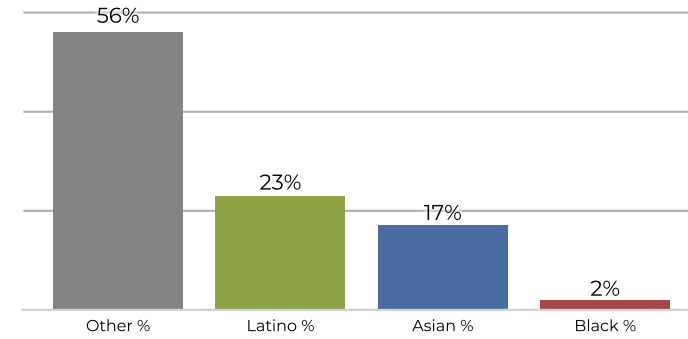
	1	2	3	4	5
Total CVAP	26,096	35,292	27,389	29,165	26,587
Other CVAP	16,670	21,319	16,876	20,007	13,127
Other CVAP %	63.9%	60.4%	61.6%	68.6%	49.4%
Latino CVAP	5,224	6,568	7,884	3,526	11,168
Latino CVAP %	20.0%	18.6%	28.8%	12.1%	42.0%
Asian CVAP	2,842	6,633	1,655	5,005	1,759
Asian CVAP %	10.9%	18.8%	6.0%	17.2%	6.6%
Black CVAP	1,360	772	975	627	533
Black CVAP %	5.2%	2.2%	3.6%	2.1%	2.0%

District 1
2020 Census

Citizen Voting Age Population


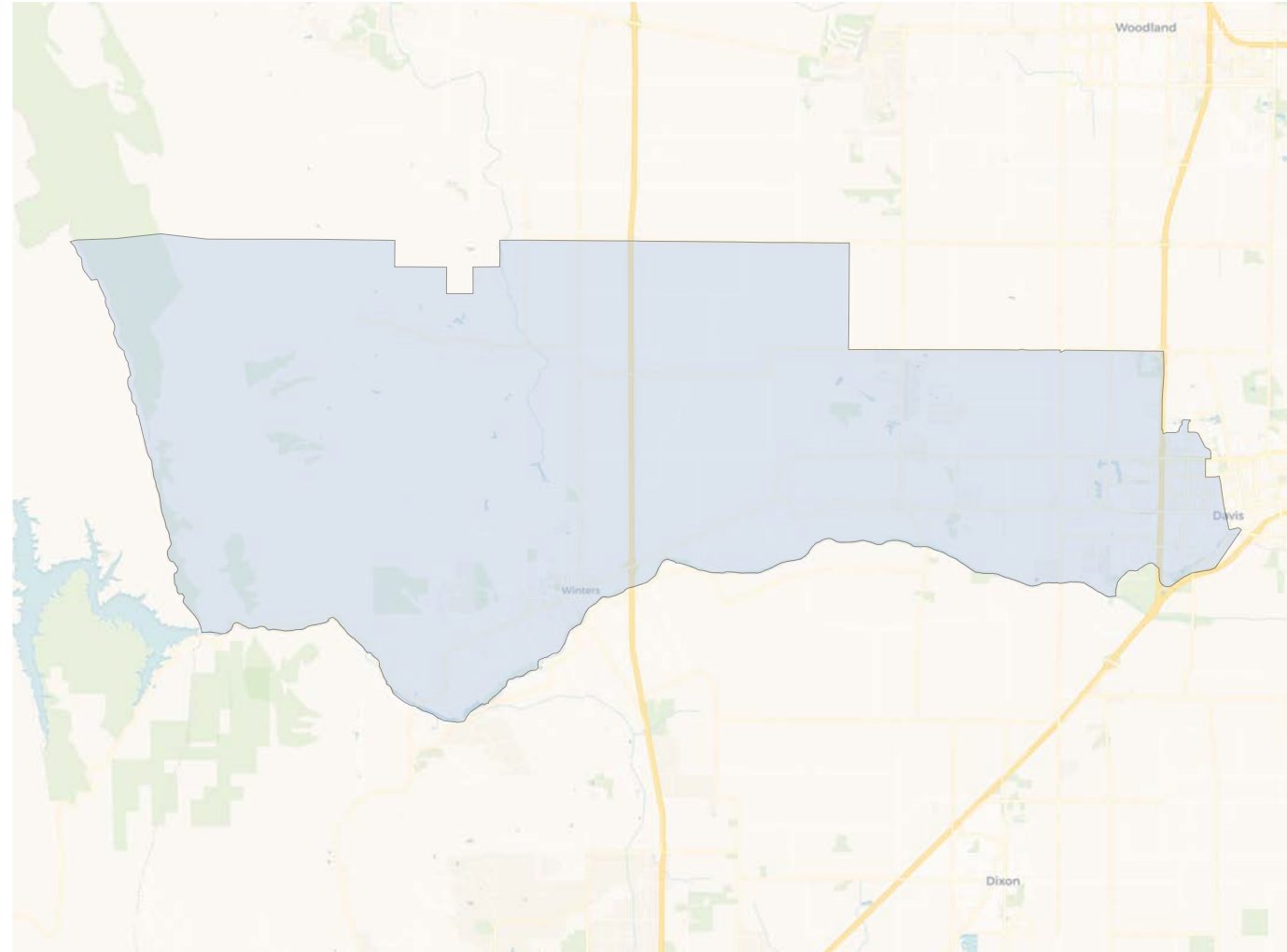
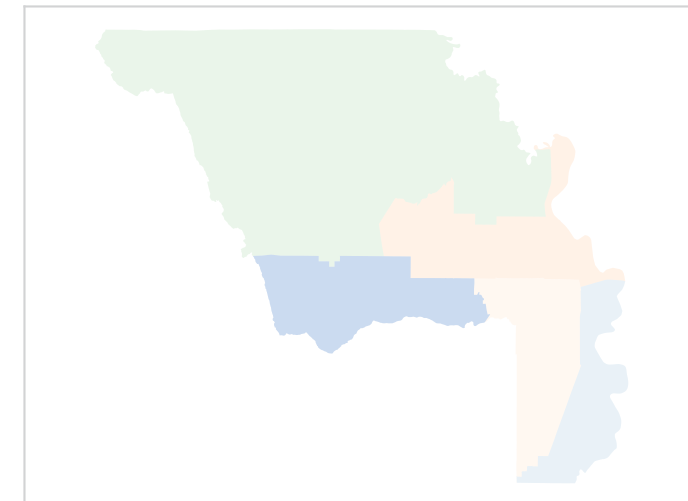
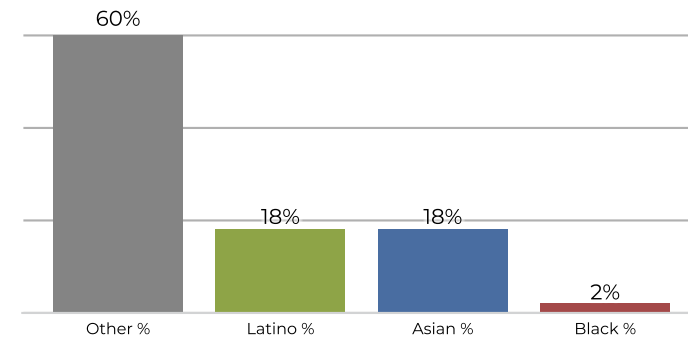
Population	Deviation	Deviation %	Other	Other %	Latino	Latino %	Asian	Asian %	Black	Black %
42,747	-637	-1.5%	22,129	51.8%	12,431	29.1%	6,163	14.4%	2,024	4.7%
Total CVAP	Other CVAP	Other CVAP %	Latino CVAP	Latino CVAP %	Asian CVAP	Asian CVAP %	Black CVAP	Black CVAP %		
26,096	16,670	63.9%	5,224	20.0%	2,842	10.9%	1,360	5.2%		

District 2

2020 Census



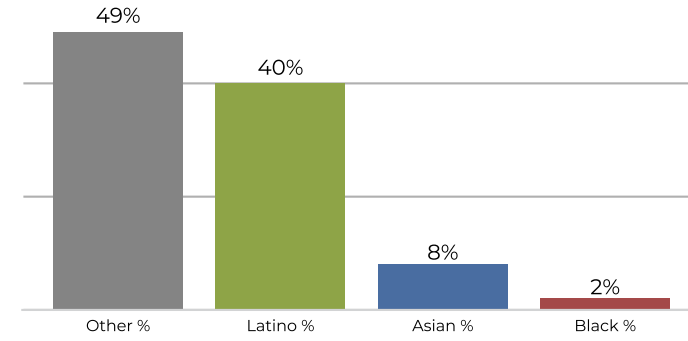
Citizen Voting Age Population



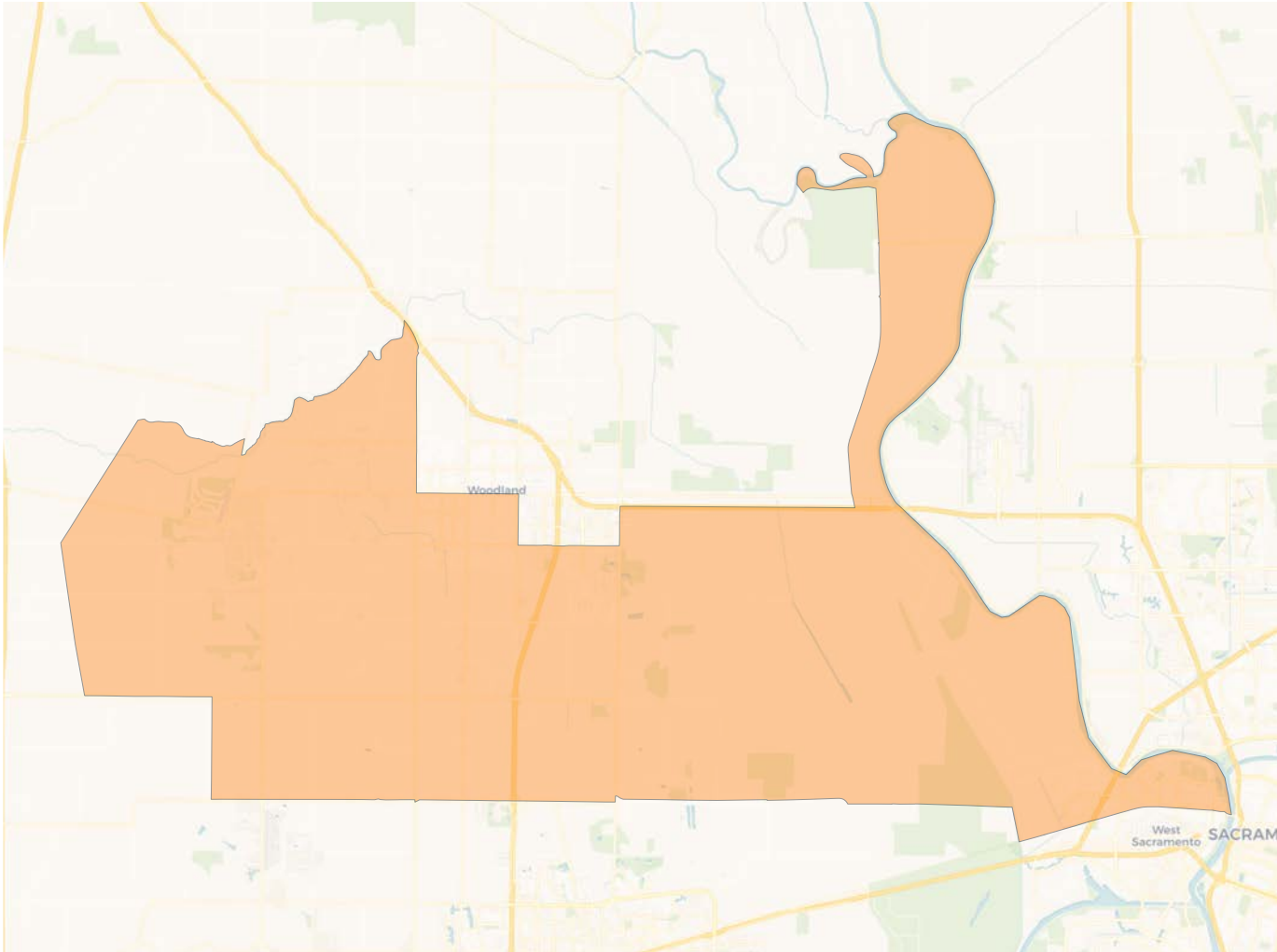
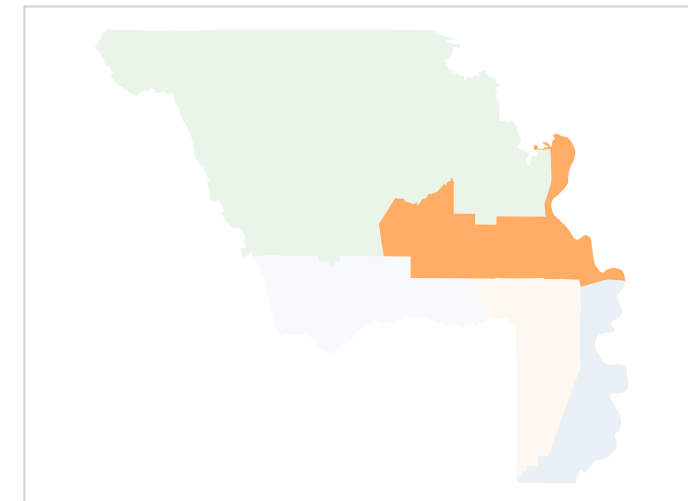
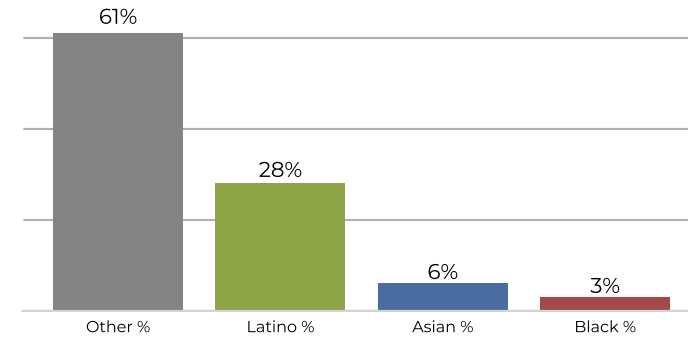
Population	Deviation	Deviation %	Other	Other %	Latino	Latino %	Asian	Asian %	Black	Black %
44,156	772	1.8%	24,944	56.5%	10,419	23.6%	7,790	17.6%	1,003	2.3%
Total CVAP	Other CVAP	Other CVAP %	Latino CVAP	Latino CVAP %	Asian CVAP	Asian CVAP %	Black CVAP	Black CVAP %		
35,292	21,319	60.4%	6,568	18.6%	6,633	18.8%	772	2.2%		

District 3

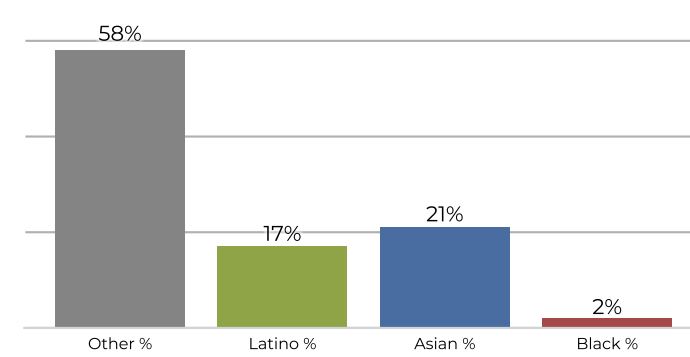
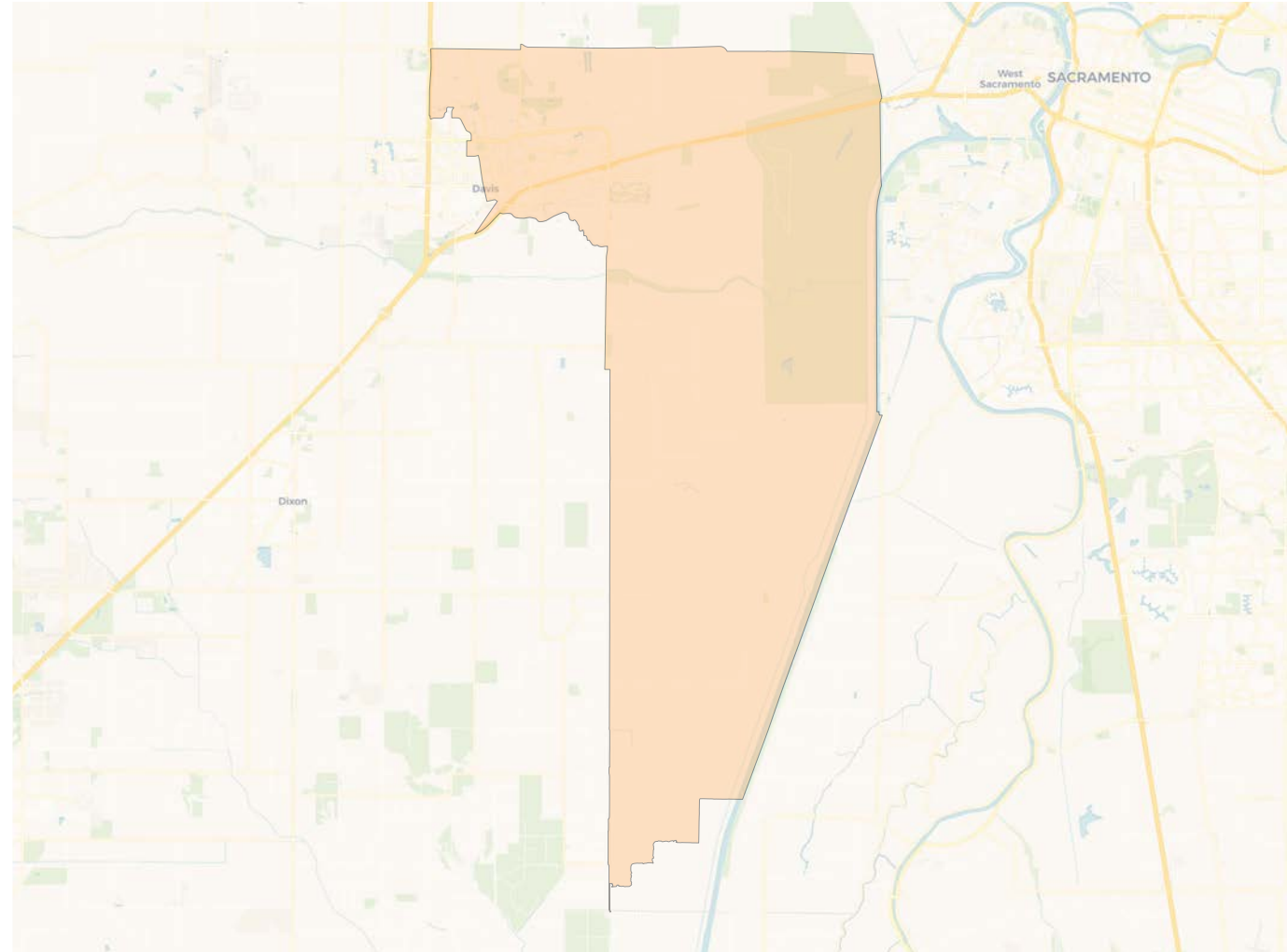
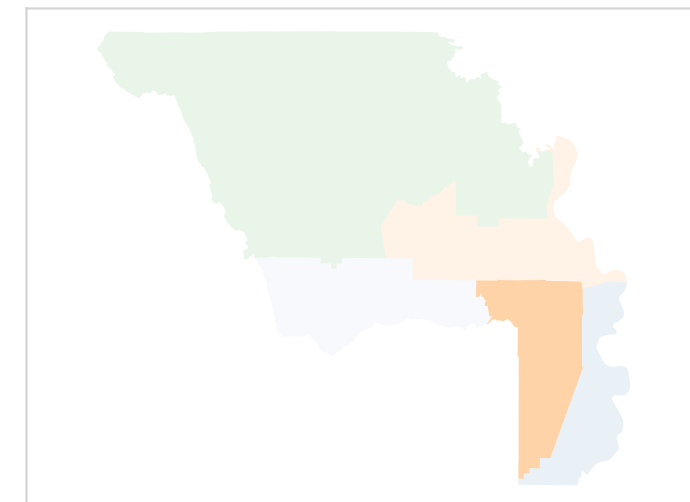
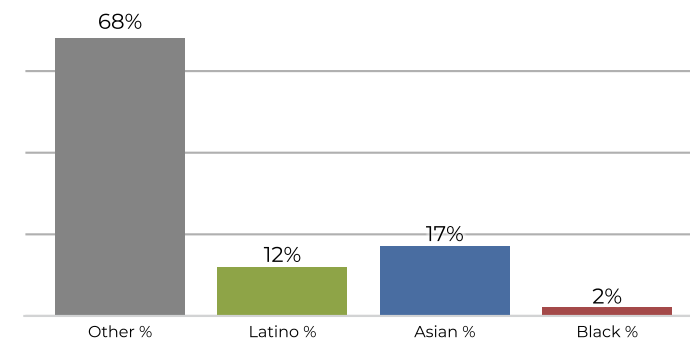
2020 Census



Citizen Voting Age Population



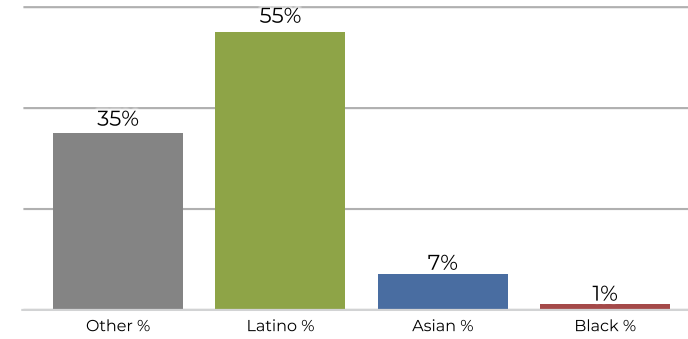
Population	Deviation	Deviation %	Other	Other %	Latino	Latino %	Asian	Asian %	Black	Black %
43,766	382	0.9%	21,759	49.7%	17,531	40.1%	3,527	8.1%	949	2.2%
Total CVAP	Other CVAP	Other CVAP %	Latino CVAP	Latino CVAP %	Asian CVAP	Asian CVAP %	Black CVAP	Black CVAP %		
27,389	16,876	61.6%	7,884	28.8%	1,655	6.0%	975	3.6%		

District 4
2020 Census

Citizen Voting Age Population


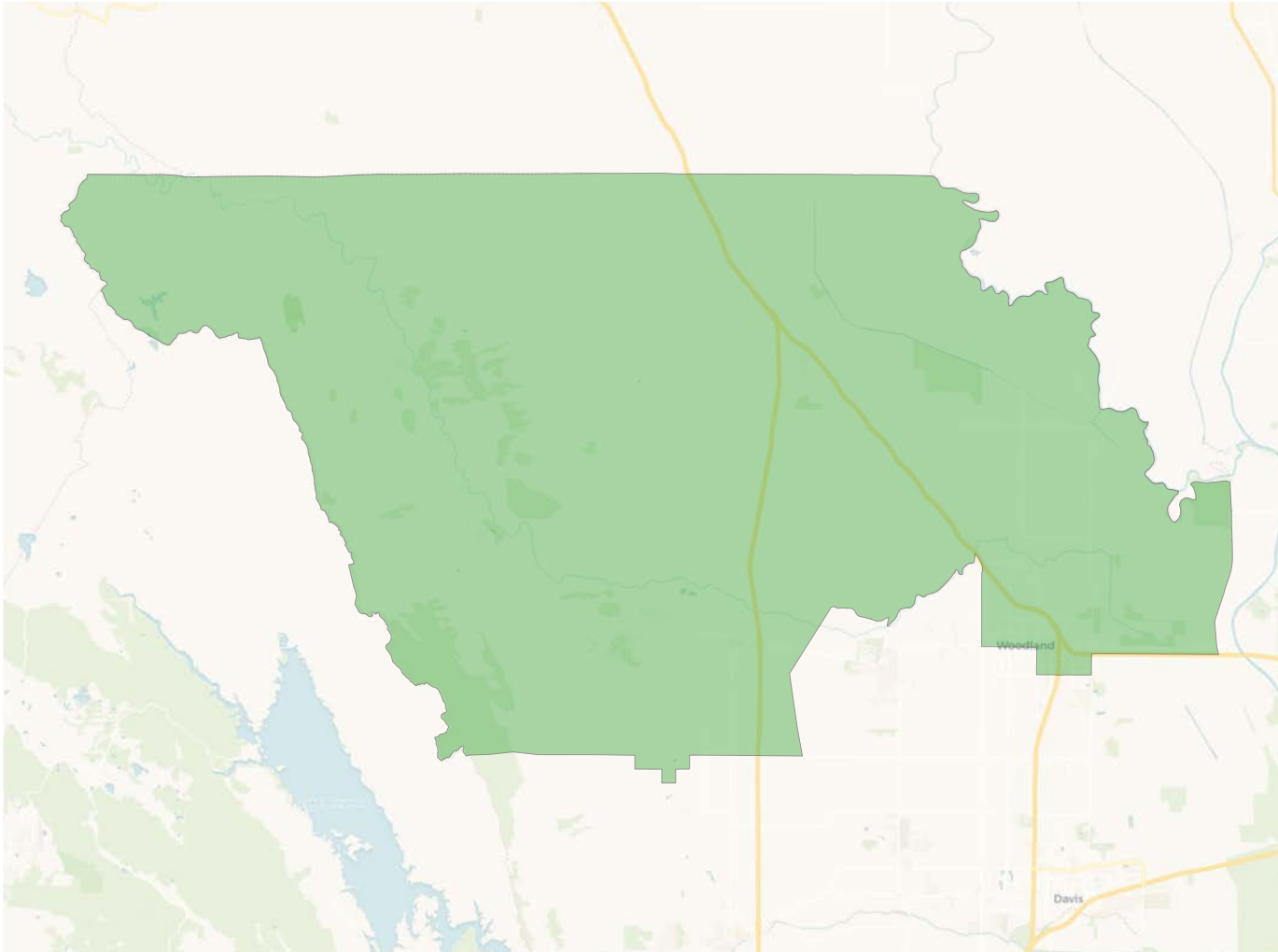
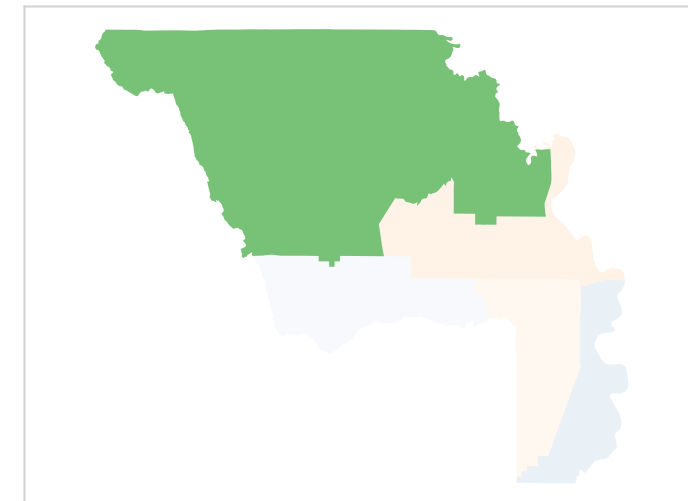
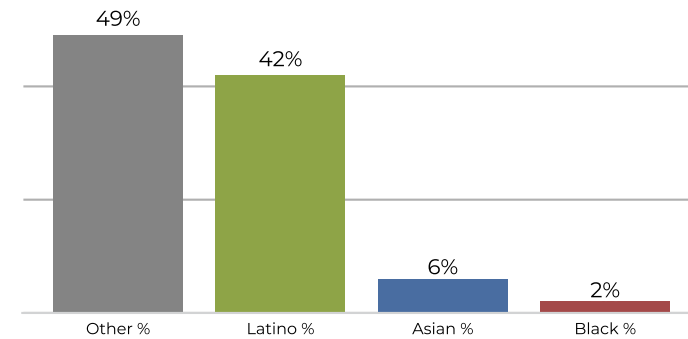
Population	Deviation	Deviation %	Other	Other %	Latino	Latino %	Asian	Asian %	Black	Black %
42,744	-640	-1.5%	24,992	58.5%	7,410	17.3%	9,347	21.9%	995	2.3%
Total CVAP	Other CVAP	Other CVAP %	Latino CVAP	Latino CVAP %	Asian CVAP	Asian CVAP %	Black CVAP	Black CVAP %		
29,165	20,007	68.6%	3,526	12.1%	5,005	17.2%	627	2.1%		

District 5

2020 Census



Citizen Voting Age Population



Population	Deviation	Deviation %	Other	Other %	Latino	Latino %	Asian	Asian %	Black	Black %
43,509	125	0.3%	15,472	35.6%	24,157	55.5%	3,054	7.0%	826	1.9%
Total CVAP	Other CVAP	Other CVAP %	Latino CVAP	Latino CVAP %	Asian CVAP	Asian CVAP %	Black CVAP	Black CVAP %		
26,587	13,127	49.4%	11,168	42.0%	1,759	6.6%	533	2.0%		