

## Community Engagement Work Group

---

Karleen Jakowski –Mental Health Director

Brian Vaughn- Public Health Director

Yolo County Health and Human Services Agency



WELLNESS • RECOVERY • RESILIENCE



# Objectives

- Introduce and explain the Mental Health Services Act (MHSA)
- Introduce the Community Engagement Work Group (CEWG)
- Describe the MHSA Community Planning Process (CPP) & MHSA general standards
- Learn about how you can participate as a stakeholder
- Discuss focus groups and questions
- Discuss next steps and how to continue our engagement



# Introductions

Who is here today?

- Please share your name, organization (if you represent an org) and the population you are representing or advocating for (children, transition age youth, adults, older adults)?
- What would you like to see in the process?



WELLNESS • RECOVERY • RESILIENCE

# Mental Health Services Act History



Passed by California voters in 2004 amid calls for fundamental changes to mental health care, the MHSA was a beginning for California to build a community-based mental health system as an alternative to institutionalization. By imposing a 1% tax on personal income in excess of \$1 million, the MHSA provides funding and a framework to transform California's traditional community mental health system to one focused on prevention and wellness, while expanding services to underserved populations and California's diverse communities.



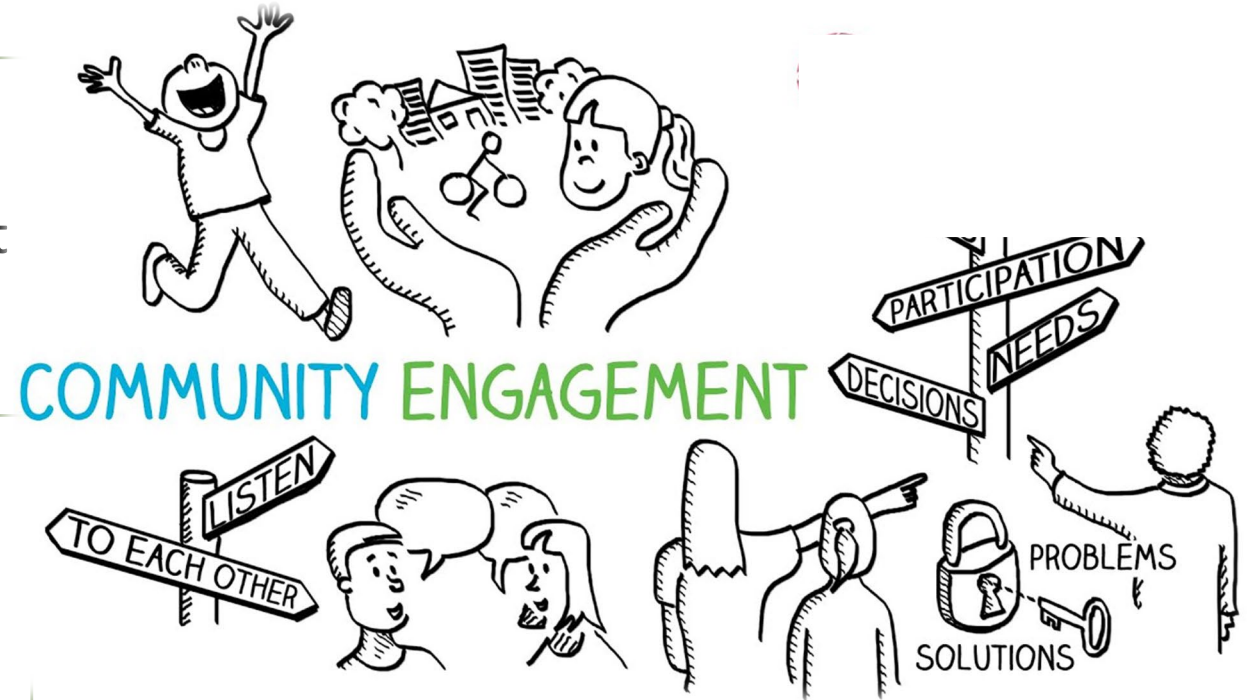
WELLNESS • RECOVERY • RESILIENCE

# The Community Engagement Workgroup (CEWG)

## What is the CEWG?

The Community Engagement Workgroup (CEWG) is an ongoing engagement workgroup to support Mental Health Services Act Planning.

The group is open to any stakeholder in Yolo County who wants to participate.



WELLNESS • RECOVERY • RESILIENCE

# MHSA Regulations

## Welfare and Institution Code (WIC)?

- General statutory law of California
- WHAT the laws are

## California Code of Regulations (CCR)?

- Regulations adopted by state agencies charged with enforcing MHSA
- HOW the laws will be enforced

THOMSON REUTERS  
**WESTLAW** California Code of Regulations

[Home](#) » [Title 9. Rehabilitative and Developmental Services](#) » [Division 1. Department of Mental Health](#)

### Chapter 14. Mental Health Services Act

- [Article 1. Application](#)
- [Article 2. Definitions](#)
- [Article 3. General Requirements](#)
- [Article 4. Funding Provisions](#)
- [Article 5. Reporting Requirements](#)
- [Article 6. Community Services and Supports](#)
- [Article 7. Prevention and Early Intervention](#)
- [Article 8. Workforce Education and Training](#)
- [Article 9. Innovation](#)



WELLNESS • RECOVERY • RESILIENCE



# MHSA Essential Elements aka the General Standards (9 CCR 3320)

1. Community Collaboration (9 CCR 3200.060)
2. Cultural Competence (9 CCR 3200.100)
3. Client-Driven (9 CCR 3200.050)
4. Family-Driven (9 CCR 3200.120)
5. Wellness, Recovery, and Resiliency (WIC 5813.5 [d])
6. Integrated Service Experience (9 CCR 3200.190)



WELLNESS • RECOVERY • RESILIENCE



# The Five Components of MHSA

## Services/activities funded by the MHSA

1. Community Services and Supports (CSS) 76% (51% FSP)
2. Prevention and Early Intervention (PEI) 19% (<25@51%)
3. Workforce Education and Training (WET)
4. Capital Facilities and Technology (CFTN)
5. Innovation (INN) 5%

\*No Place Like Home (7%)- A program funded by MHSA.

- MHSA funds cannot supplant existing services
- Services must be in a voluntary setting





# MHSA Three Year Plan/Plan Update Process

County mental health programs shall prepare and submit a Three-Year Program and Expenditure Plan and Annual Updates for MHSA programs and expenditures.

- Yolo County's Three-Year Plan
- FY 2023-2026
- Two Annual Updates (FY 24-25 & FY 25-26)

The Community Planning Process (CPP) is used to develop Three-Year Program and Expenditure Plans, and Plan updates in partnership with stakeholders.

- Identify community issues related to mental illness
- Analyze the mental health needs in the community
- Identify and reevaluate priorities and strategies to meet those needs

A structured process that Counties use to:

- Engage the community in discussing the impact and effectiveness of MHSA programs
- Collect stakeholder input on current and future planning.
- Define the populations to be served
- Determine strategies to provide effective services



# What is a Stakeholder?

**Individuals or entities with an interest in mental health services in California, including but not limited to:**

Individuals with serious mental illness and/or serious emotional disturbance and/or their families

Providers of mental health and/or related services

Educators and/or representatives of education

Representatives of law enforcement

Any other organization that represents the interests of individuals with serious mental illness/ and/or serious emotional disturbance and/or their families



# MHSA Focus Groups

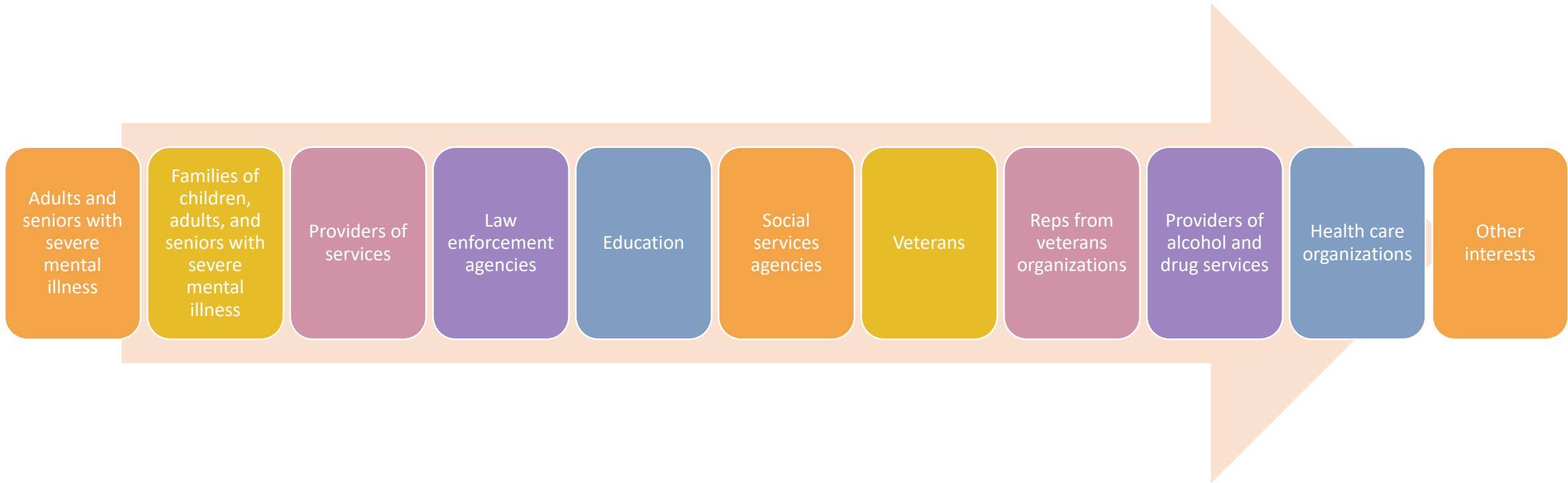
## What are the Focus Groups?

- The Mental Health Services Act (MHSA) Focus Groups are meetings with populations to hear their interests and needs and build reciprocal relationships.
- Some groups are open and some are closed to preserve group sense of safety.



# Populations

- WIC 5848 states each plan shall be developed with local stakeholders including:



# Populations

## Other interests:

- Child Welfare
- DA's and Public Defender
- Rotary
- People with disability and supports
- Gender violence
- Stakeholders reflecting the diversity of Yolo County:
  - Native American
  - LGBTQ
  - Black
  - Russian
- Religious organizations
- LatinX
- Asian
- Muslim
- and more



WELLNESS • RECOVERY • RESILIENCE



# Focus Groups

- Pilot Group (IHSS staff)
- District Attorney – Victims of Crime Unit
- Yolo Family Strengthening Network
- HHSA Agency Director Providers Stakeholder Work Group
- North Valley Indian Health
- Cesar Chavez Community School: Staff participants
- Cesar Chavez Community School: Student participants
- Yolo Healthy Aging Alliance Advocacy Committee (Older Adult)
- Yolo County Maternal Mental Health Collaborative Monthly Meeting
- Yolo County Office of Education & School District Staff
- HHSA Behavioral Health Team
- Rotary Club of Davis
- Empower Yolo
- Washington School District
- Fourth and Hope
- National Alliance on Mental Illness
- Maternal, Child and Adolescent Advisory Board
- Yolo County Substance Use Provider Meeting-DMC-ODS providers
- Consumers Beamer Housing
- Yolo Rainbow Families
- Peer Support Group
- Emergency Medical Care Committee
- Yolo Food Bank
- Help Me Grow (Professionals)
- Woodland Community College (Students)
- Help Me Grow (Parents and Families)
- Children, Youth, and Families Staff
- West Sacramento Police Department
- Woodland Community College (Staff)
- Latinx Perspectives on Mental Health
- Shambhala Meditation Center



Total participants\*

n=446

\*Three-Year Program & Expenditure Plan FY 2020-2023



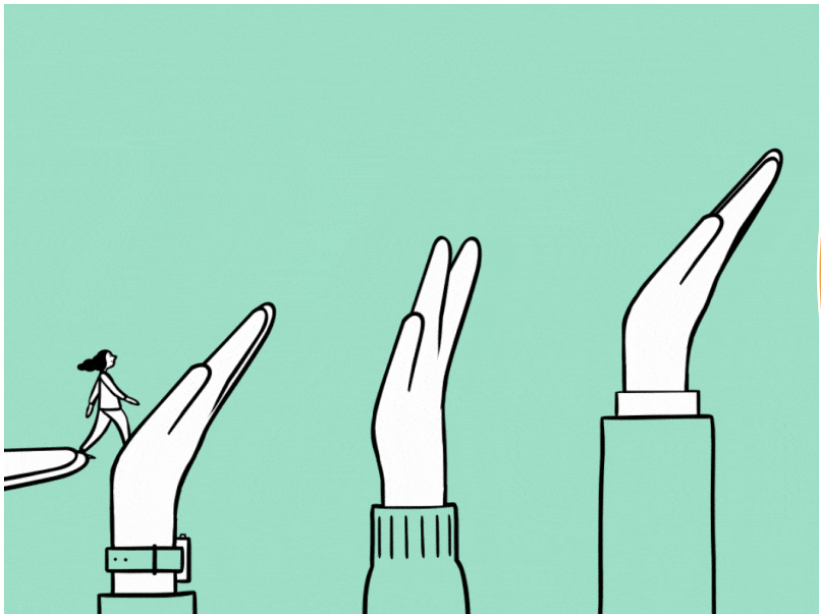
# Focus Group Questions

1. What does mental health mean to you?
2. What are your thoughts about what can impact a person's mental health?
3. Specific to mental health issues, what are some general or specific improvements needed in Yolo County?
4. Can people in Yolo County get the mental health help they need?
5. How can Yolo County MH address mental health issues before they become serious?
6. People sometimes talk about the stigma associated with mental health, what are your thoughts about this?
7. If you had a million dollars, how would you spend it on mental health?
8. Do you feel that Yolo County is equipped to handle mental health services related to your community?
9. What is one piece of advice you would give the County as they begin to decide how to fund the MHSA in the upcoming three (3) years?



# Next Steps-Engagement

We want your partnership!  
We want to hear from you!



<h2>CEWG Meetings</h2>	<ul style="list-style-type: none"><li>• October 25</li><li>• November TBD</li><li>• January TBD</li><li>• February</li><li>• April/May</li></ul>
<h2>Focus Groups</h2>	<ul style="list-style-type: none"><li>• November – January 2023</li></ul>
<h2>Plan Creation</h2>	<ul style="list-style-type: none"><li>• Draft Plan May 2023</li><li>• Public Hearing</li><li>• Public Comments</li></ul>



# Acronyms

Acronym	Meaning
AOT	Assisted Outpatient Treatment
BOS	Board of Supervisors
CEWG	Community Engagement Workgroup
CFTN	Capital Facilities and Technology
CHOC	Community Housing Opportunities Corporation
CREO	Creando Recursos y Enlaces Para Oportunidades
CSS	Community Services and Supports
DHCS	California Dept. of Healthcare Services
FSP	Full-Service Partnerships
GSD	General Systems Development

Acronym	Meaning
HHSA	Health and Human Services Agency
IHSS	In-Home Supportive Services
INN	Innovations
LMHB	Local Mental Health Board
MHSA	Mental Health Services Act
NVBH	North Valley Behavioral Health
PEI	Prevention and Early Intervention
PTG	Pine Tree Gardens
SMI	Severe Mental Illness
SUD	Substance Use Disorder
WET	Workforce Education and Training Programs
YCCC	Yolo Community Care Continuum

