

LEGEND:

ELECTRIC TRANSMISSION TOWER	
EXISTING GROUND CONTOUR (2011)	
EXISTING GROUND CONTOUR (2021)	
200' TOP OF BANK SETBACK (NET RIPARIAN AREAS)	
TOP OF BANK	
CHANNEL FORM TEMPLATE	
RIPARIAN DEPRESSION	
APPROXIMATE EXISTING CONVEYOR ROUTE	
EXISTING DIRT ROAD	
PROPOSED DIRT ROAD	
V DITCH SWALE	
INTERIM GRADING/ACCESS ROAD	
PHASE BOUNDARY	
RECLAMATION BOUNDARY	
WATER WELL	
EXISTING/PROPOSED	
WIND TURBINE	
EXISTING ELEV.	
PROPOSED ELEV.	
HORIZONTAL TO VERTICAL SLOPE	
WATER SURFACE	
PROJECT BOUNDARY	
PARCEL LINE	
EASEMENT	
FLOW ARROW	

NOTES:

- FINAL ELEVATIONS, EXTENTS, SLOPES, AND MINING DEPTHS ARE ONLY APPROXIMATE AND MAY VARY BASED ON FIELD CONDITIONS, ACCESSIBILITY OF PRODUCT, THE AMOUNT AND QUALITY OF MATERIAL UNCOVERED, MARKET CONDITIONS, AND THE ABILITY OF THE OPERATOR TO MINE AND MEET THE RECLAMATION REQUIREMENTS.
- SEE SEPARATE HABITAT RESTORATION PLAN AND ASSOCIATED FIGURES PREPARED BY ZETNER PLANNING & ECOLOGY DATED FEBRUARY 2018 FOR DETAILED END USE INFORMATION.
- SLOPES SHALL BE CONSISTENT WITH THE RECOMMENDATIONS PROVIDED BY GEOCON ENGINEERING AND THE SLOPE STABILITY REPORT DATED FEBRUARY 2018.
- THE INTENT WITH RECLAMATION SLOPES IS TO HAVE THEM BE IN-SITU CUT SLOPES (WITHOUT BACKFILL) WHERE POSSIBLE. HOWEVER, OPERATOR RESERVES THE RIGHT TO MINE TO PROJECT LIMITS AND BACKFILL IN A MANNER THAT SUBSTANTIALLY CONFORMS WITH THE SLOPES SHOWN ON THESE SHEETS.
- BERMS, ACCESS ROADS, AND FENCING MAY REMAIN FOLLOWING RECLAMATION TO FACILITATE END USES AND YOLO COUNTY REQUIREMENTS.
- EXISTING STOCKPILES SHALL BE RELOCATED TO AVOID CONFLICT WITH THE INTERIM ACCESS ROAD.
- ROADWAY ALIGNMENT STATIONING AND HORIZONTAL CONTROL ARE SHOWN TO DEFINE THE GENERAL INTENT OF THE INTERIM ROADWAY LOCATION AND PHASE DELINEATION; HOWEVER, THE ACTUAL ROADWAY CONSTRUCTION MAY DEVIATE FROM THE LAYOUT AS LONG AS THE OVERALL INTENT IS ACHIEVED.

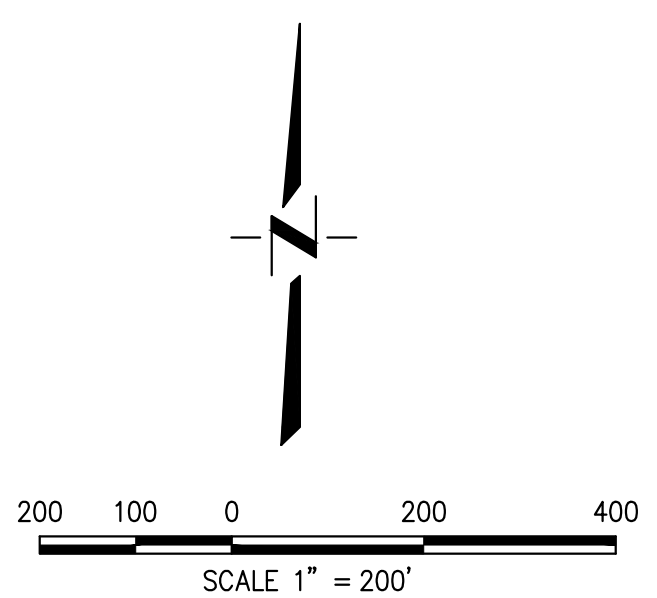
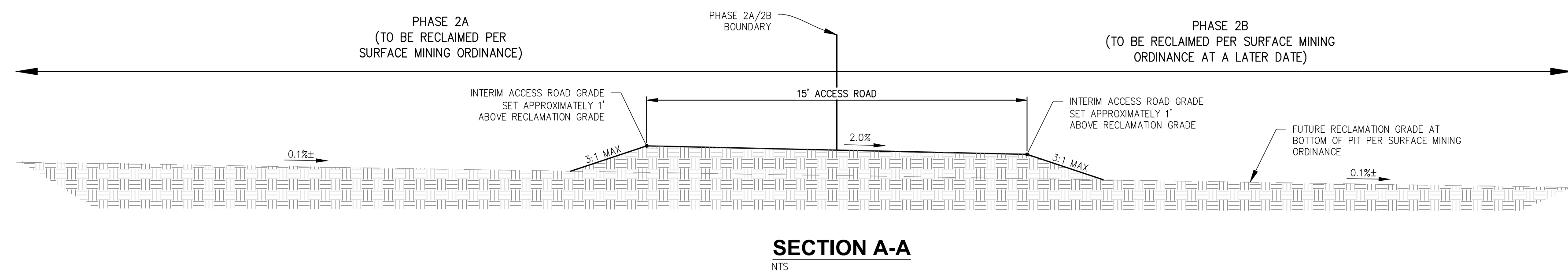
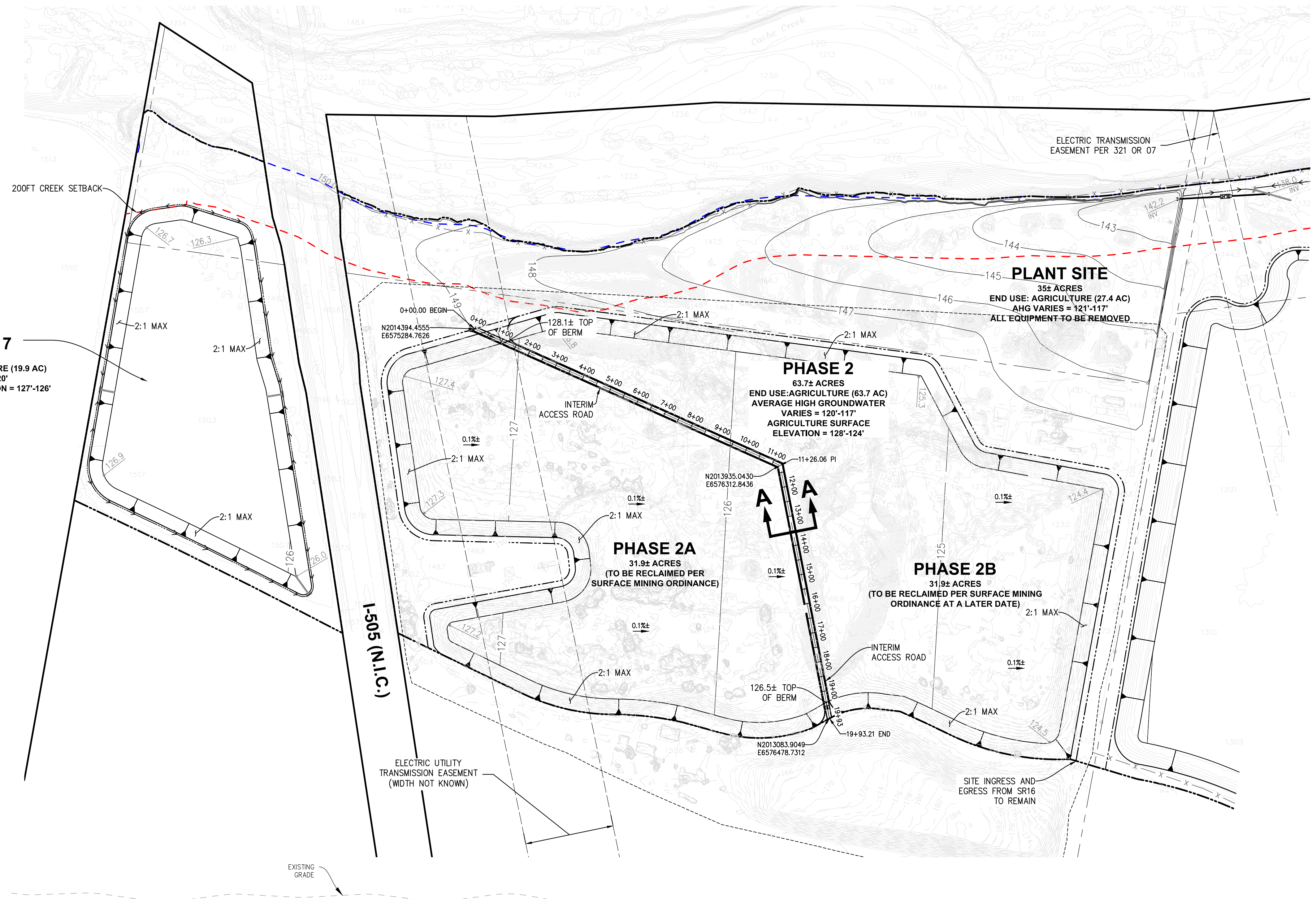
PHASE 7
21± ACRES
END USE: AGRICULTURE (19.9 AC)
AHG = 121'-120'
AG SURFACE ELEVATION = 127'-126'

PHASE 2
63.7± ACRES
END USE: AGRICULTURE (63.7 AC)
AVERAGE HIGH GROUNDWATER VARIES = 120'-117'
AGRICULTURE SURFACE ELEVATION = 128'-124'

PHASE 2A
31.9± ACRES
(TO BE RECLAIMED PER SURFACE MINING ORDINANCE)

PHASE 2B
31.9± ACRES
(TO BE RECLAIMED PER SURFACE MINING ORDINANCE AT A LATER DATE)

PLANT SITE
35± ACRES
END USE: AGRICULTURE (27.4 AC)
AHG VARIES = 121'-117'
ALL EQUIPMENT TO BE REMOVED.



DESIGNED BY	NO.	DATE	REVISIONS	BY	APPD.
CC					
CC					
SG					
SCALE					
AS SHOWN					



CECWEST.COM
Project Planning ■ Civil Engineering ■ Landscape Architecture
Sacramento Office ■ Davis Office
2120 20th Street, Suite Three Sacramento, CA 95818 (916) 455-2026
2940 Spafford Street, Suite 200 Davis, CA 95618 (530) 758-2026

CEMEX CACHE CREEK
PHASE 2 INTERIM RECLAMATION PLAN
YOLO COUNTY CALIFORNIA

SHEET	1
OF	1
DATE:	08/16/2022
JOB NO:	253.80