

Attachment A – Land Acknowledgement

## **Land Acknowledgement Statement**

We should take a moment to acknowledge the land on which we are gathered. For thousands of years, this land has been the home of Patwin people. Today, there are three federally recognized Patwin tribes: Cachil Dehe Band of Wintun Indians of the Colusa Indian Community, Kletsel Dehe Band of Wintun Indians, and Yocha Dehe Wintun Nation.

The Patwin people have remained committed to the stewardship of this land over many centuries. It has been cherished and protected, as elders have instructed the young through generations. We are honored and grateful to be here today on their traditional lands.

*Approved by Yocha Dehe Tribal Council (July 23, 2019)*

Attachment B – 2023.04.24 YCCAC Meeting Minutes



## MEETING MINUTES

### Yolo County Climate Action Commission

April 24, 2024 | 4:00 PM – 6:30 PM

#### COMMISSION MEMBERS:

Suzanne Reed, District 1 Appointee

Robin Datel, District 2 Appointee

Mark Aulman, District 3 Appointee

Andrew Truman Kim, District 4 Appointee (**VICE-CHAIR**) (*arrived at 4:16 PM*)

Adelita Serena, District 5 Appointee

Chris White, Technical Lead (*arrived at 4:10 PM*)

NJ Mvondo, Environmental Justice Lead (**CHAIR**)

Bernadette Austin, Climate Scientist/Subject Matter Expert

Pelayo Alvarez, Climate Scientist/Subject Matter Expert (*not in attendance*)

Mica Bennett – At Large

Ken Britten – At Large

#### EX-OFFICIO MEMBERS:

Sarah Morgan, Yocha Dehe Wintun Nation

Camille Kirk, UC Davis

#### SUPERVISORS:

Supervisor Lucas Frerichs, Yolo County Board of Supervisors, District 2 (*not in attendance*)

Supervisor Jim Provenza, Yolo County Board of Supervisors, District 4 (*represented by O. Snow*)

### MEETING MINUTES

1. **Land Acknowledgement** (*read by K. Britten*)
2. **Approval of the Agenda**

**Decision:** Approve

**Approved By / Seconded By:** S. Reed / R. Datel

**Ayes:** S. Reed, R. Datel, M. Aulman, A. Serena, B. Austin, M. Bennett, K. Britten

**Noes:** None

**Abstain:** None

**Absent:** A. Kim, C. White, P. Alvarez

**3. Public Comment**

- A representative of Cool Davis shared information about the Earth Day Pledge that is accepting sign ups from Yolo County residents to commit or pledge to accomplish six carbon reducing activities in six different categories. Pledges have been received from communities beyond Davis and across the County, including one being made from Puerto Rico. Cool Davis will also be highlighting the Yolo County CAAP in their upcoming newsletter. The website <https://www.cooldavis.org/earthdaypledgechallenge> has more information on the pledge including information on how to sign-up to participate.

**4. Approve March 27, 2023 Commission Meeting Minutes**

**Decision:** Approve

**Approved By / Seconded By:** S. Reed / M. Aulman

**Ayes:** S. Reed, R. Datel, M. Aulman, A. Serena, B. Austin, M. Bennett

**Noes:** None

**Abstain:** K. Britten

**Absent:** A. Kim, C. White, P. Alvarez

**Additional Comments/Action Items:**

**5. Staff Announcements/Reports (Staff)**

- Staff is conducting surveys with the community to determine the best path forward for the Climate Compact. There is still time to collect responses, so those interested in participating in the survey that are not already on the Compact mailing list can email [sustainability@yolocounty.org](mailto:sustainability@yolocounty.org).
- Staff shared that they have been engaged in legislative advocacy for virtual and hybrid accommodations for Brown Act bodies. The next hearing will take place on Wednesday, April 26<sup>th</sup>.
- A question was asked if public comment can be provided virtually for the hearing.

- i. Staff responded that public comments will only be accepted in-person at 10 AM in the Capitol Building, Room 127. It was added that those interested in receiving additional information about this hearing can reach out to [kristen.wraithwall@yolocounty.org](mailto:kristen.wraithwall@yolocounty.org).
  - ii. In-home housing supporting services and additional County Staff will be in attendance.
- A question was asked regarding whether there are other Yolo County Commissions weighing in on this.
  - i. Staff responded that Yolo County In-Home Supportive Services will be attending and has submitted a support letter.
- A question was asked regarding whether there is a support list that supporters can sign.
  - i. Staff responded that they are not the leads for this project and will look into whether this is an option.
- A commenter shared that there is a fact sheet on the bill that can be shared with Commissioners. These fact sheets typically list supporters. The legislative search [assembly.ca.gov](http://assembly.ca.gov) can track Assembly Bill 817 and allow for comments to be made. It was added that there is typically a limited number of in-person testifiers allowed, so submitting online comments may better allow for input to be received.
- A question was asked regarding whether the Commission could take a vote on writing a letter of support.
  - i. A commenter shared that it is too late to write a letter of support for consideration for the hearing tomorrow. It was added that those interested in attending can reach out to the Board Chambers and Yolo County Sustainability for transportation support.
- A suggestion was made to Commission members to engage with community groups that they are already involved in advocacy.
- It was shared that it would be important to still write a letter of support as there are many points at which the letter could be received during the legislative process of the bill. Additional question was asked regarding whether this was a double-referred or single-referral, along with whether it will be going to appropriations committee before going to the floor.
  - i. Staff responded that they believe it is single referred.
- A question was asked regarding how much time is available to prepare a letter of support before the bill reaches the next stage of legislation.
  - i. A commenter responded that there is still time to draft a letter for future hearings and various opportunities to advocate. The schedule of deadlines is available at [senate.ca.gov](http://senate.ca.gov). It was added that there are many

climate concerns that arise from this bill such as emissions from transportation.

- A motion was made to authorize staff to draft a letter of support for AB-817. ‘

**Decision:** Approve

**Approved By / Seconded By:** M. Aulman, A. Serena

**Ayes:** S. Reed, R. Datel, M. Aulman, A. Kim, A. Serena, C. White B. Austin, M. Bennett, K. Britten

**Noes:** None

**Abstain:** None

**Absent:** None

**Public Comment:**

- A commenter expressed support for the Commission’s advocacy. It was asked to clarify who is hosting the meeting. It was also requested that information being shared with local commissions also be shared with the public. It was also suggested that virtual public participation be accepted.
  - Staff responded that it is the Local Government Committee hosting the hearing.

**6. Update on In-Person Climate Action and Adaptation Plan Outreach Events (K. Wraithwall)**

- Staff shared an update on the CAAP outreach process. It was shared that April and May has been a busy month of initial outreach to get the community aware of the County’s CAAP process and begin receiving feedback on the community’s comfort and familiarity with concepts related to climate change and sustainability. Outreach materials include CAAP infographics available in print and online, stickers, flyers and QR codes that direct to the County’s various online presences, and children’s activities. All materials are available in English and Spanish. The infographics share information on what a CAAP is, how carbon sequestration works, and a step-by-step guide to what the CAAP process will look like. There is also an online portal being developed that should be available starting in May.
- It was shared that these events have garnered overall positive responses from the community. There have been events so far in Knights Landing, Esparto, Winters, Davis, and Woodland. The vast majority of respondents shared that they have high or very high levels of concern regarding climate change.
- It was added that there are many more outreach events upcoming. Staff confirmed that Yolo County will have an educational booth at Whole Earth Festival in Davis.

- It was shared that there are a number of additional outreach events scheduled during the months of April and May.
- It was added that the Natural and Working Lands Technical Advisory Committee is finalizing a separate outreach process with ag-specific workshops and materials.
- A question was asked if there were any negative responses to the tabling events.
  - i. Staff responded that there have been participants that express disinterest and some that have criticized the work of the County. Over the past weekend there were concerns shared regarding whether the County is involving the agricultural community. It was shared that the best way to address these concerns is to educate on the work that the County and the Commission have been doing along with the future plans for the CAAP. It was added that a County map that emphasizes which areas the CAAP focuses on will be helpful.
- A commenter shared that the survey seemed short and asked what the most important piece of information from the survey is.
  - i. A response was made that this is just the preliminary survey.
  - ii. Staff responded that this is not the final CAAP survey. This initial survey is to get a sense of the community's opinions to help guide what language and tone will be used in future materials for the CAAP, including a longer survey.
- A suggestion was made that the survey could allow participants to rank their concerns regarding weather events.
- A commenter shared that at these outreach events, people were most willing to engage in conversation when given the opportunity to speak to their personal lives and how they are affected or why they feel concerned about weather events. It was emphasized that the children's activities were effective at bringing families to tables. It was added that the multilingual materials were critical to engaging with the community, and that having Spanish speakers at these events is extremely helpful.
- A comment was made that the Equity & Engagement technical advisory committee now has youth members. The commenter asked for a description of coordination efforts and asked whether there is a way for the public to engage with the CAAP process after attending one of these events or filling the survey.
  - i. Staff responded that the end of the survey allows participants to share if and how they would like to be involved in the CAAP process with an opportunity to provide contact information. It was added that many respondents shared that they would like to receive text updates on the CAAP process.



- ii. It was shared that the goal of the survey was to provide an opportunity to get feedback without overwhelming people at distracting family events. Future surveys will dive more deeply into the issues that community members are experiencing.
- A question asked whether there has been any feedback on the differences in emissions between County jurisdictions and collaboration between jurisdictions in the County. It was added that the Carbon Sequestration infographic lists the burning of fossil fuels as a natural process and a request was made to correct that.
  - i. Staff shared that there will be presentations made at the commissions of each relevant jurisdiction. Coordination with other jurisdictions will be an ongoing process. It was also added that some Yolo County residents may not know whether they live in the incorporated or unincorporated County. Throughout the process of filling out the CAAP there will be data requests from other jurisdictions.
- A question asked whether the carbon sequestration graphic was shared with the E&E group. It was agreed that the burning of fossil fuels should be separated from natural carbon emitting processes on the graphic.
  - i. Staff responded that they can communicate with Dudek’s graphic designers to amend that.
- A commenter shared that someone from Health & Human Services asked for an update on the work of the Commission and how it relates to other departments in the County. Other departments have expressed interest in the CAAP process.

**Public Comment:**

- A question was asked when the final survey will be ready to be sent out to a larger audience.
  - Staff responded that a draft is planned to be presented to the Equity & Engagement TAC in May with a final version ideally ready by the end of that month.
  - Staff clarified that the current survey in circulation is not a draft, rather a preliminary survey.
- A comment was made that the survey implies that the Commission would consider collaborating with leaders of other jurisdictions.

**7. Update from Dudek on Climate Action and Adaptation Plan Workshops and Greenhouse Gas Inventory**

- Dudek Staff provided an update on the greenhouse gas (GHG) inventory Dudek staff has conducted for Yolo County. It was shared that they have conducted a municipal inventory and have drafted a municipal inventory calculation worksheet and

gathered fleet information. It was also shared that they have sent data requests to Yolo utilities for a community-wide sector-based inventory. It was shared that Dudek has drafted a Yolo-specific consumption-based inventory narrative.

- A question was asked regarding the low numbers of transportation emissions considering inter-city travel, and whether there is a chance for commissioners to look into the models that have been used to create these calculations.
- A question was asked about which service sector is the highest emitting. It was also asked where agricultural production is considered on the inventory.
  - Dudek Staff responded that they will present these clarifications to the Commission at a future meeting.
- It was clarified that the consumption inventory is different from the direct emissions inventory. The consumption-based inventory entails the processes that are involved in the entire life cycle of goods and services used by households, making it difficult to compare to the previous inventory.
  - A question was asked if delivery services are included in consumption-based inventories. Dudek Staff responded yes.
  - A question was asked whether vehicles on the freeways I-80 and I-50 are included in the inventory.
    - Dudek responded that those emissions are typically not included in the inventory unless they begin or end in the County.

**Public Comment:**

- A question was left in the chat regarding whether there have been any conversations with Valley Clean Energy regarding an automatic opt-in program with reports of additional charges to families who don't want to be in the program.

**8. Technical Advisory Committee (TAC) Updates**

- Equity and Engagement (E&E) (A. Serena)
  - i. An introduction of E&E TAC Members (*Attachment J, K*). It was shared that members were selected from the interview process that involved soliciting and advertising applications. Additional members recruited for the TAC. The TAC represents all five districts of the County. Commission representatives of the TAC include Adelita Serena, Bernadette Austin, and Suzanne Reed. It was added that there is an open door to accept further engagement if anyone is interested. Youth Commission Liaisons include Izzy Chan-De Silva and Zainab Waqar. There is a spot open for a liaison from the Aging and Adult Services Commission. Other members of the E&E TAC include Antonio De Loera-Brust and Meron Gebre. The TAC

is looking to fill additional seats with Community Based Organization outreach partners.

- Natural and Working Lands (NWL) (K. Reza and H. Nichols)
  - i. It was shared that Yolo County Staff, the Yolo Resource Conservation District (RCD), and Commission representatives on the TAC met to determine priority categories for additional membership to ensure the TAC represents the breadth of the Yolo County Agricultural community. The group has filled its seats with representatives from conventional large-scale farming operations, small-scale farming operations, ranching operations, and a representative from an organization that directly represents and serves farmworkers. Members of the TAC from RCD include Heather Nichols and Kate Reza. Commission Representatives include Pelayo Alvarez, Mica Bennett, Andrew Truman Kim, and Sarah Morgan. Agricultural community representatives include Humberto Izquierdo, Neil Muller, Denise Sagara, Scott Stone, Adrian Solis, and Eric Willson. It was shared that the group provides hybrid meeting options that are hosted at the Center for Land-Based Learning.
  - ii. It was shared that the last NWL TAC meeting was held at the Center for Land-Based Learning. The TAC reviewed and approved an agricultural survey with a few amendments, along with a list of carbon sequestration strategies that is in the final stages of development. The group also discussed outreach strategies, including event tabling, electronic survey distribution, presentations, and workshops.
  - iii. It was added that the NWL TAC meetings have been very productive.
  - iv. A comment was made that it is incredibly useful to have direct conversations with the agricultural community.
  - v. A question was asked whether there is outreach planned for large farming corporations and local subsidiaries of Big Ag.
    - 1. A response was made that the soil and land-based sequestration strategies and equipment reductions strategies may differ from industrial practices.
    - 2. Staff added that the group is thinking about how best to engage with big industries.
    - 3. It was added that there are major farm contractors and management companies that could be considered as outreach targets as well.

#### **Public Comment**

- A commenter shared concerns about Valley Clean Energy. It was shared that their apartment uses solar energy, yet they have been involuntarily opted into Valley Clean Energy. It was added that members of their community have expressed similar

concerns regarding extra charges from Valley Clean Energy, disproportionately affecting families that are not able to take on the burden of extra energy charges.

- County Staff shared that they will follow up with this issue, and further concerns can be addressed to [sustainability@yolocounty.org](mailto:sustainability@yolocounty.org)
- It was shared that there is a VCE advisory committee that hosts meetings open to the public. Board meetings are also open to the public. The next meeting will be held this Thursday.
- A question was asked whether it is within the scope of work of the Commission to address these concerns.
  - Staff responded that it is not within the scope of work of the Commission and that this concern will be dealt with internally with County Staff.

## **9. Commission Member Reports, Comments, Future, Future Agenda Items**

### **10. Long Range Calendar** (*Attachment O*)

- A question was asked regarding when there will be another round of updates on the Early Action Projects.
  - i. Staff shared that an item on the second round of Early Action Projects in September is likely to get pushed to before the next budget cycle in the next coming months. It was added that updates on the current round of actions can be provided as part of the Staff Updates.

### **11. Adjournment**

- Meeting adjourned at: 6:37 PM

Attachment C - CAAP Community Outreach Partner Recruitment Flyer



## CLIMATE ACTION & ADAPTATION PLAN

**APPLY BY FRIDAY,  
JUNE 16TH!**

Yolo County is recruiting **Community Based Organizations** to serve as **Paid Outreach Partners** for the 2030 Climate Action and Adaptation plan!

### WHAT IS THE 2030 CLIMATE ACTION & ADAPTATION PLAN ?

Yolo County is developing a new **Climate Action and Adaptation Plan (CAAP)** with the goal of achieving a **Just Transition to net-negative greenhouse gas (GHG) emissions by 2030**. Yolo County is already experiencing the impacts of climate change (including extreme heat, flooding, intense wildfires, and worsening air quality). These impacts are disproportionately felt by low-income communities, Black, Indigenous, and People of Color (BIPOC) communities, the elderly, people with disabilities, and youth.

The **Yolo County Climate Action Commission's (YCCAC) Equity and Engagement Technical Advisory Committee (E&E TAC)** is looking for **Outreach Partners** to support the following outreach goals:

- Engage the community in the unincorporated area of Yolo County in the CAAP development and implementation process.
- Provide input on outreach activities and communications strategies that will promote and support community engagement in CAAP development and implementation.
- Interact with communities and generate input on strategies, policies, and programs that will support a Just Transition to a net-negative and sustainable Yolo County.

### TIME COMMITMENT AND COMPENSATION

**Compensation is \$5,000 per Community Based Organization/Partner.**

Monthly E&E TAC meetings are **90 minutes**. Review of materials in advance of the monthly meeting and coordination in between monthly meetings is also anticipated. It is also expected that CBPs/CBOs will **support coordination and/or attend community events throughout the development of the CAAP**. CBOs/CBPs may spend **2 to 4 hours per month** on average from June 2023 to August 2024.

**QUESTIONS? EMAIL [SUSTAINABILITY@YOLOCOUNTY.ORG](mailto:SUSTAINABILITY@YOLOCOUNTY.ORG)**

## REQUEST AND EXPECTED OUTCOMES

Yolo County is looking for Community Based Partners (CBPs) and/or Community Based Organizations (CBOs) to **build and maintain relationships with the community in the unincorporated area of Yolo County** throughout the CAAP development and implementation process. By working with CBPs/CBOs that are known and trusted within the community, the County hopes to center equity in the outreach and engagement process and ensure the CAAP prioritizes strategies and programs that meet greatest needs of our communities, while creating opportunities for economic and social well-being.

### Serving as an Outreach Partner entails the following:

- Attendance at monthly E&E TAC meetings
- Coordinating and/or facilitating community event(s) related to development of the CAAP, i.e. workshops, tabling events, convening community conversations, etc.
- Providing input on the Equity and Engagement Strategies used for community outreach and engagement.
- Providing input on materials and tools used for community outreach and engagement.

## HOW TO APPLY:

Please submit a letter (no more than 5 pages) to [sustainability@yolocounty.org](mailto:sustainability@yolocounty.org) by **Friday, June 16, 2023**. **The letter should include the following:**

- A brief description of how you/your organization will **support the goals of Equity and Engagement** in development of the CAAP.
- An overview of your organization’s **experience working with communities in unincorporated Yolo County**, specifically low-income communities, Black, Indigenous, and People of Color (BIPOC) communities, the elderly, people with disabilities, and youth.
- Please cite your experience **coordinating and hosting community events** (list of most recent events coordinated, number of people coordinated and attended, purpose of the event and outcomes).

## HOW WILL APPLICATIONS BE EVALUATED?

TOPIC	SELECTION CRITERIA	SCORE
Organizational Capacity	Completeness of the description on how your organization will support the goals of the Equity and Engagement Strategy for the CAAP.	5 points
Community Experience	Demonstrated experience and description of work with communities in the unincorporated area, specifically low-income communities, Black, Indigenous, and People of Color (BIPOC) communities, the elderly, people with disabilities, and youth.	5 points
Event Coordination Experience	Demonstrated capacity to coordinate and facilitate outreach events. List of most recent events coordinated, number of people coordinated and attended, purpose of the event and outcomes.	5 points

**TOTAL 15 points**

Attachment D - CivicSpark Fellow Recruitment Flyer



YOLO COUNTY  
SUSTAINABILITY  
DIVISION



**NOW HIRING**  
CivicSpark Fellows!!



Yolo County is hiring **TWO CivicSpark Fellows** for the 2023-24 Service Year (*starting August '23*) to support our Climate Action and Adaptation Planning process! Help Yolo County meet our climate goals and learn about local climate action!

**TO APPLY, VISIT:**

<https://civicspark.civicwell.org/fellow/>

**QUESTIONS? EMAIL:**

[sustainability@yolocounty.org](mailto:sustainability@yolocounty.org)



**SCAN TO APPLY**



Attachment E - Staff Report on Climate Action and Adaptation Plan Portal Launch

# STAFF REPORT

**DATE:** May 22, 2023  
**TO:** Yolo County Climate Action Commission  
**FROM:** Kristen Wraithwall, Sustainability Manager  
**RE:** Climate Action and Adaptation Plan Portal Launch | YoloCAAP.org

## RECOMMENDED ACTION

Receive information/provide reactions on new Climate Action and Adaptation Plan Portal.

## REASON FOR RECOMMENDED ACTION

Staff have worked closely with the team at Dudek to develop a one-stop portal for all information on the Climate Action and Adaptation Plan (CAAP) development: [YoloCAAP.org](https://YoloCAAP.org) (*images of which can be found in Attachment F*). This online portal is ready for soft-launch, and staff wish to provide an update and solicit feedback.

## BACKGROUND

For the past two months, Yolo County staff have been working with the graphic design team at Dudek to design a CAAP portal that is interactive, user-friendly, visually appealing, available in multiple languages, and includes critical public information about the CAAP update. The culmination of this effort is [YoloCAAP.org](https://YoloCAAP.org), which contains the following sections:

- Call to Actions at the top of the page:
  - o Register for our upcoming event(s); and
  - o Take our survey.
- An Overview of the CAAP, including infographic
- Frequently Asked Questions
- A CAAP Timeline, including deliverables and public engagement opportunities
- An overview of our upcoming events and meetings including:
  - o A downloadable event calendar with a list of all upcoming tabling events; and
  - o Information on the Commission and Technical Advisory Committees with links to the County's webpage for each group.

- Share Your Story, a form where community members can share words, photos, art about what climate action, resilience, or sustainability in Yolo County means to them.
  - o To be used as vignettes in the CAAP, and as features in social media and/or newsletter.
- Resources
  - o Currently just includes link to Climate Emergency Resolution.
  - o Will be built out to include drafts of relevant plan sub-components (*emissions inventory draft, community engagement and equity plan, etc.*)
- Contact Form

There are several edits that will be made in the coming week including:

- Adding additional language options (Spanish and English are only options currently).
- In Spanish version of the website, replacing existing graphics with Spanish-language versions.
- Update formatting so that the Frequently Asked Questions don't automatically open (*keep the page more manageable, particularly on the mobile version*).
- Correct a few minor typos.
- Explore the possibility of adding a widget that scrolls through recent social media posts.

Once feedback has been received and edits have been incorporated, this portal will be launched more broadly through our network and become the default URL included in outreach related to the Climate Action and Adaptation Plan.

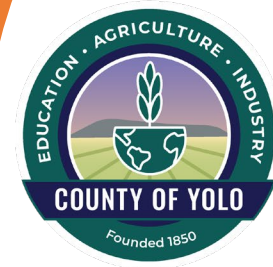
Attachment F - Presentation on Yolo County Climate Action and Adaptation Plan  
Portal

INTRODUCING:  
**YoloCAAP.org**

**The One-Stop Yolo County  
Climate Action and  
Adaptation Plan Portal**



**PLAN DE ACCIÓN Y  
ADAPTACIÓN AL CLIMA**



**CLIMATE ACTION  
& ADAPTATION PLAN**



**Next event!**

First CAAP Workshop (English/Español)  
June 20, 2023 @ 6 - 8PM  
Woodland Community & Senior Center  
[Register Here](#)

**We want to hear from you!**

Complete our five minute survey to help us understand how you feel about climate change and the actions the County should pursue to reduce greenhouse gas emissions.

[Take Our Survey](#)



YOLO COUNTY

# Climate Action and Adaptation Plan

Building a resilient, equitable, and carbon-negative future for Yolo County

[Learn More](#)

[Get Involved](#)

## Here's the plan!

In 2020, the Yolo County Board of Supervisors set the goal of meeting a carbon-negative footprint by 2030 with a focus on equity and justice. The Climate Action and Adaptation Plan (CAAP) is a roadmap that outlines the actions that Yolo County will take to meet these greenhouse gas (GHG) emissions reduction goals and help our community be more resilient to climate impacts such as higher temperatures, more frequent



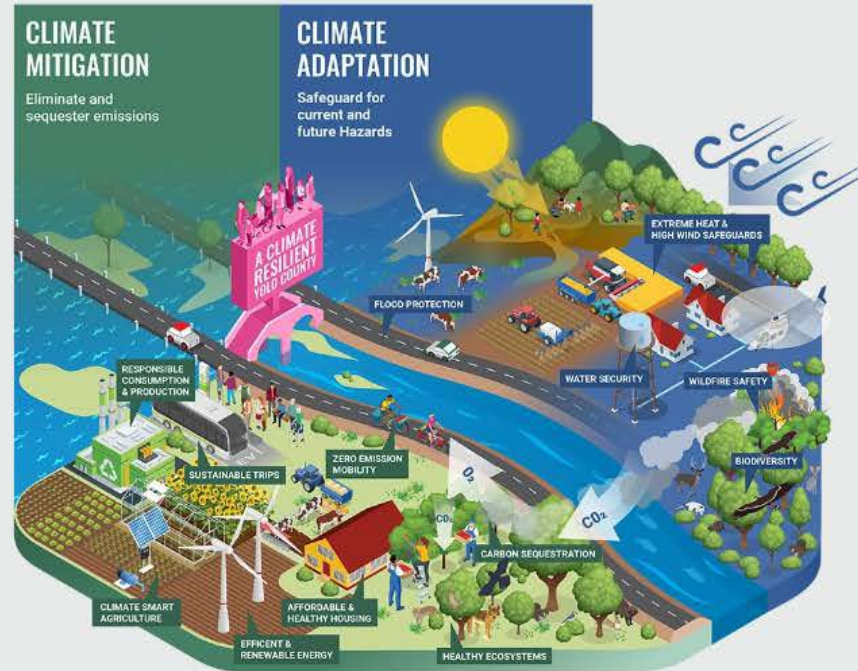




## Here's the plan!

In 2020, the Yolo County Board of Supervisors set the goal of meeting a carbon-negative footprint by 2030 with a focus on equity and justice. The Climate Action and Adaptation Plan (CAAP) is a roadmap that outlines the actions that Yolo County will take to meet these greenhouse gas (GHG) emissions reduction goals and help our community be more resilient to climate impacts such as higher temperatures, more frequent wildfires and floods, and drought.

Driven by public input, the CAAP will include recommendations for how we can lower emissions, protect our natural resources, use more renewable energy, support the sustainable agricultural practices that are already thriving here in Yolo County, and more. The CAAP is designed to benefit all community members and to promote health, equity, and resilience in all processes and outcomes.



## Frequently Asked Questions

### ^ What is a Climate Action and Adaptation Plan (CAAP)?

A Climate Action and Adaptation Plan (CAAP) is a roadmap that outlines the actions that Yolo County will take to meet greenhouse gas (GHG) emissions reduction goals and help our community be more resilient to climate impacts such as higher temperatures, more frequent wildfires and floods, and drought.





## Frequently Asked Questions

### ^ What is a Climate Action and Adaptation Plan (CAAP)?

A Climate Action and Adaptation Plan (CAAP) is a roadmap that outlines the actions that Yolo County will take to meet greenhouse gas (GHG) emissions reduction goals and help our community be more resilient to climate impacts such as higher temperatures, more frequent wildfires and floods, and drought.

### ∨ Why is Yolo County developing a CAAP?

### ∨ What is a Just Transition?

### ∨ Can you define climate adaptation and resiliency?

### ∨ What is a carbon-negative footprint?

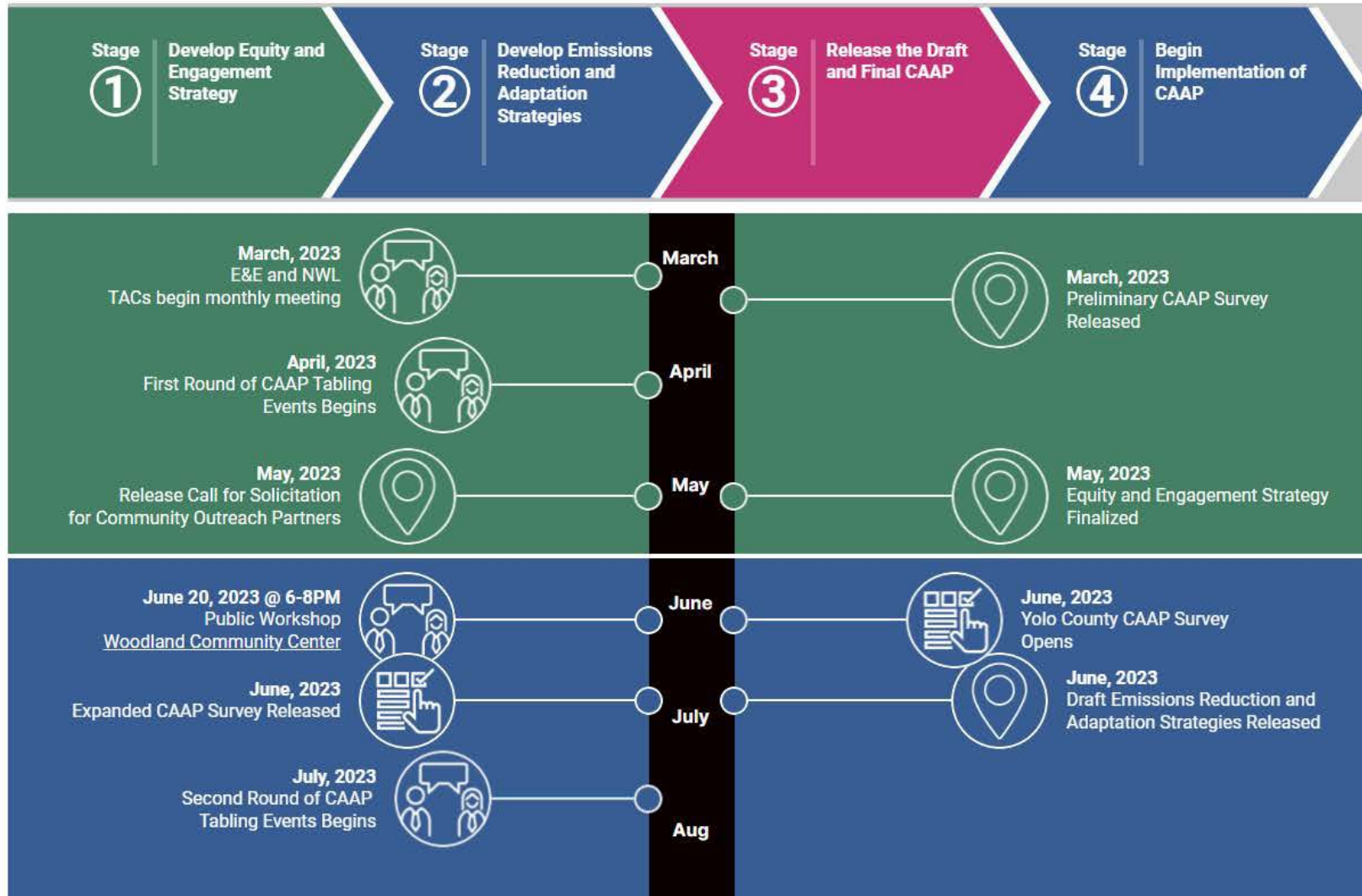
### ∨ What is carbon sequestration?

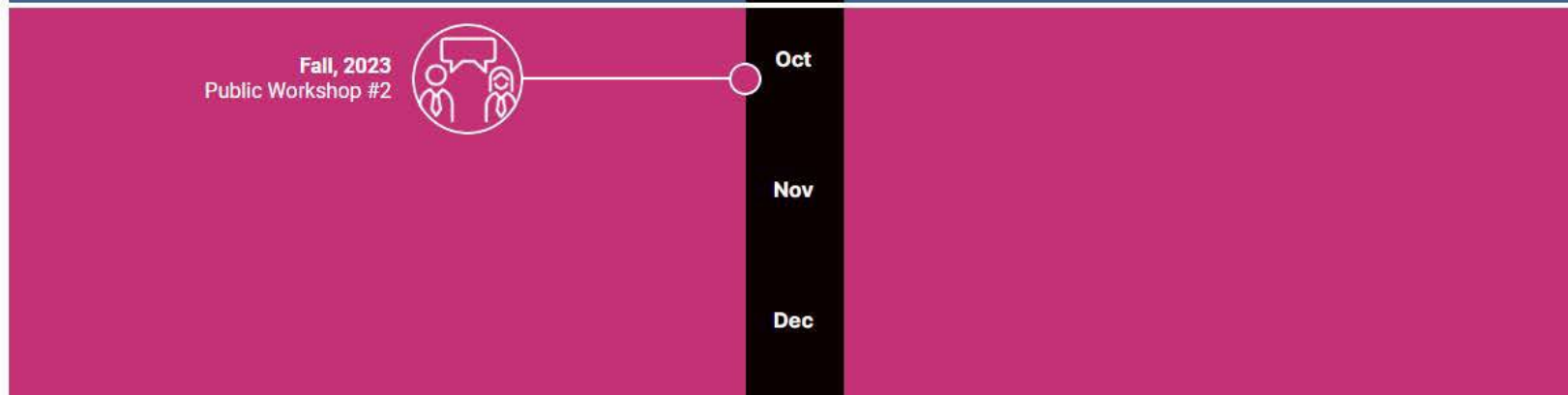
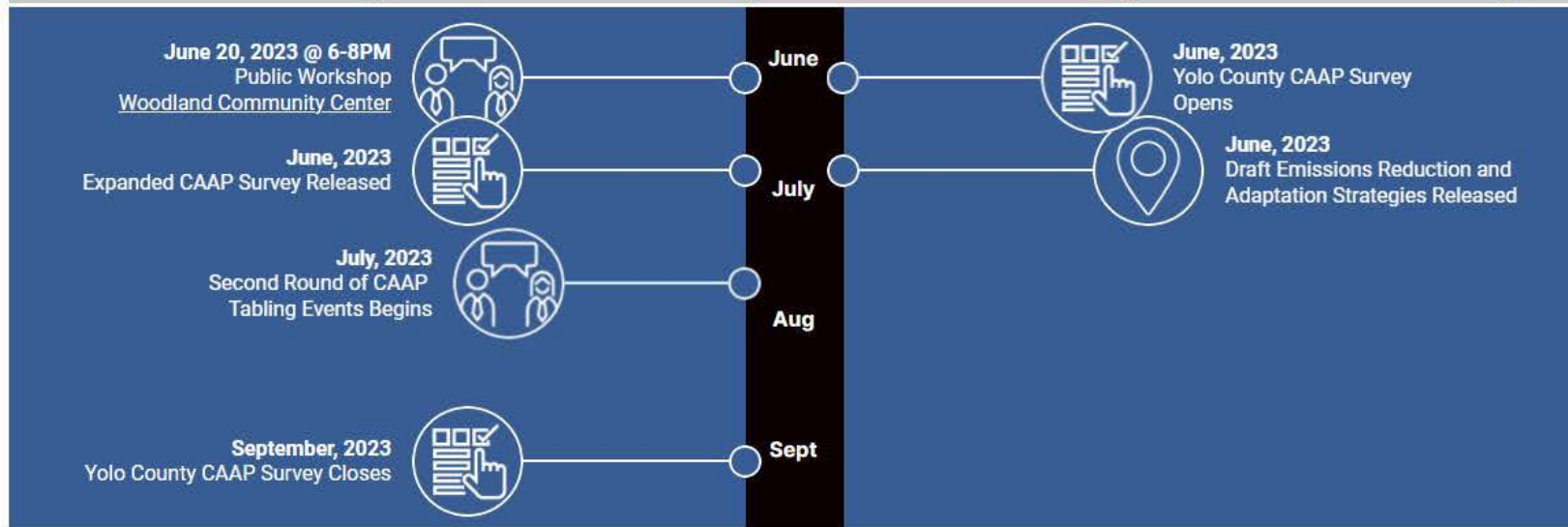
### ∨ Does the CAAP include the cities in Yolo County?

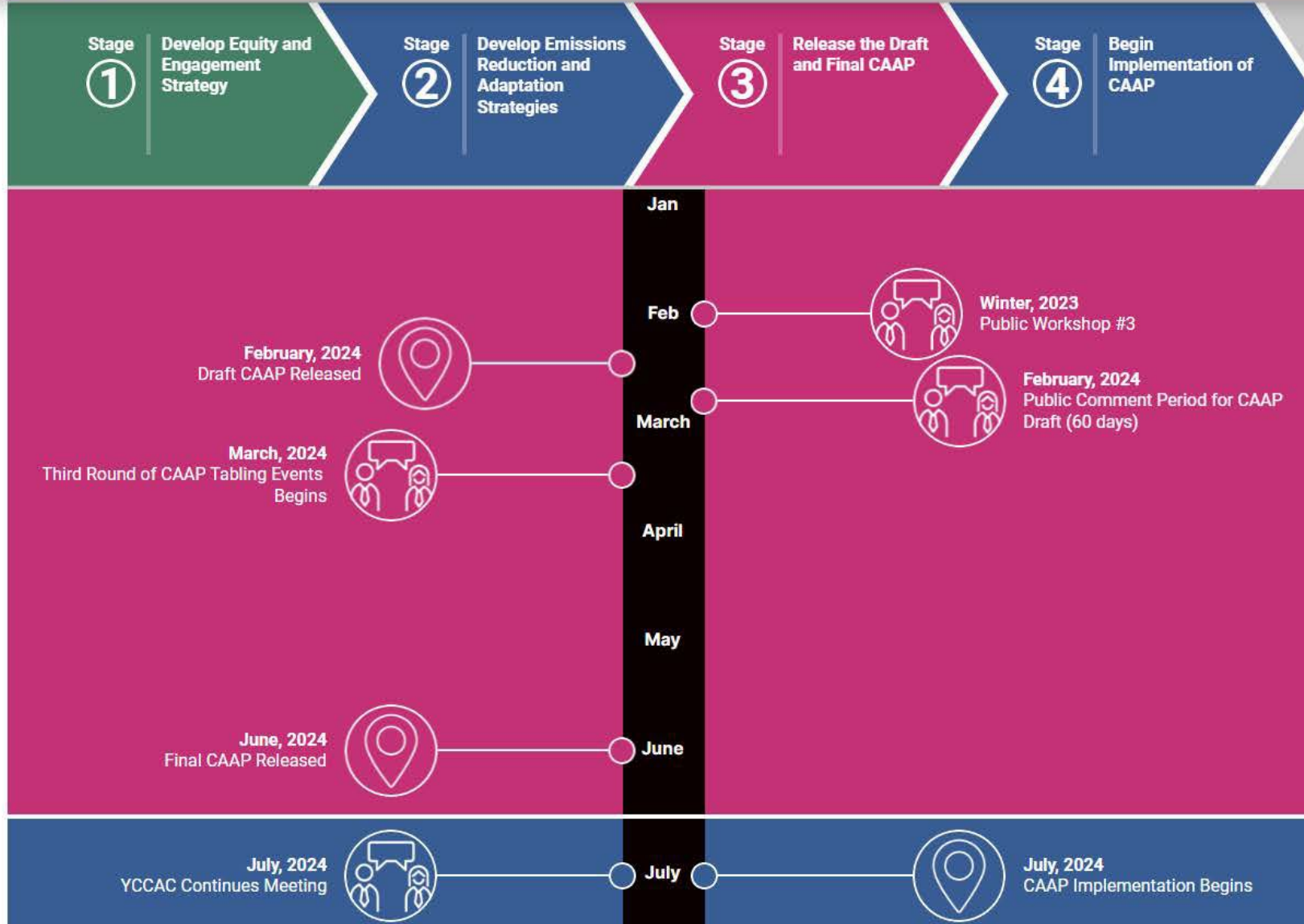
### ^ How can I stay involved?

Sign up for the Yolo Sustainability Newsletter by visiting [this link](#) (*sign-up is at the bottom of the page*). The County will be hosting outreach events and community workshops throughout the CAAP development process, and will share important information, opportunities to participate, helpful resources, and more. You can also follow us on [Instagram](#) and [Facebook](#)!

## Climate Action and Adaptation Plan Timeline











## Join one of our upcoming meetings

[See Full Calendar](#)



### The Yolo County Climate Action Commission

The Commission is charged with developing and implementing the CAAP.

**June 26, 2023**  
4:00PM – 6:30PM  
Yolo County Board Chambers or Via Zoom

[Learn More and View Agenda](#)



### The Equity and Engagement Technical Advisory Committee

The E&E TAC advises on community engagement and ensures the CAAP achieves a Just Transition.

**June 21, 2023**  
4:30PM – 6:00PM  
Via Zoom

[Learn More and View Agenda](#)



### The Natural and Working Lands Technical Advisory Committee

The NWL TAC engages the agricultural community in the CAAP process.

**June 14, 2023**  
3:00PM - 4:30PM  
[Center for Land Based Learning Headquarters](#) or Via Zoom

[Learn More and View Agenda](#)



## Share Your Story

What does climate action, resilience, or sustainability in Yolo County mean to you? Share your story and/or photos for a chance to be featured on our social media pages!

[Share Your Story Here](#)





## Climate Action and Adaptation Plan Survey

Are you a Yolo County resident? We want to hear from you! Complete our five minute survey to share your thoughts on climate change and the actions the County should take to reduce greenhouse gas emissions.

[Take Our Survey Here](#)

### ^ Yolo County Climate Emergency Resolution

In September 2020, the Yolo County Board of Supervisors passed and adopted Resolution No. 20-114, which declared climate change a crisis requiring action. The resolution called for a just transition towards an inclusive, equitable, sustainable, and resilient local economy, and a call to support and advocate regional, national, and international efforts necessary to reverse the climate, social justice, and economic crises.

The resolution directed the creation of the Yolo County Climate Action Commission, which was charged with advising on the development and implementation of a new Countywide Climate Action and Adaptation Plan to become carbon negative by 2030.

[Read the full text of the resolution here.](#)

## Contact Us

## Contact Us

Do you have questions about the CAAP? Feel free to reach out to us via email at [sustainability@yolocounty.org](mailto:sustainability@yolocounty.org), or send us your thoughts through the contact form below!

Name/Nombre\*

Email address/Dirección de correo electrónico\*

Comments/Comentarios\*

1000

Please complete the CAPTCHA below to submit the survey

Type the characters you see in the image



Submit



## Preguntas frecuentes

### ^ ¿Qué es un Plan de Acción y Adaptación al Clima (CAAP)?

Un Plan de Acción y Adaptación al Clima (CAAP) es una hoja de ruta que describe las medidas que adoptará el condado de Yolo para cumplir los objetivos de reducción de emisiones de gases de efecto invernadero (GEI) y ayudar a nuestra comunidad a ser más resistente a los efectos del clima, como temperaturas más altas, incendios forestales e inundaciones más frecuentes y sequías.

### ∨ ¿Por qué está elaborando el Condado de Yolo un CAAP?

### ∨ ¿Qué es una transición justa?

### ∨ ¿Puede definir la adaptación al clima y la resiliencia?

### ∨ ¿Qué es una huella de carbono negativa?

### ∨ ¿Qué es la captura de carbono?

### ∨ ¿Incluye el CAAP a las ciudades del condado de Yolo?

### ∨ ¿Cómo puedo seguir participando?

## Calendario del Plan de Acción Climática y Adaptación



Attachment G - Staff Report on Climate Action and Adaptatin Plan Workshop  
Agenda

# STAFF REPORT

**DATE:** May 22, 2023  
**TO:** Yolo County Climate Action Commission  
**FROM:** Kristen Wraithwall, Sustainability Manager  
**RE:** Review and Provide Feedback on First In-Person Climate Action and Adaptation Plan Workshop Agenda

## RECOMMENDED ACTION

Review and Provide Feedback on First In-Person Climate Action and Adaptation Plan Workshop Agenda

## REASON FOR RECOMMENDED ACTION

Staff—in partnership with Dudek and the Equity and Engagement Technical Advisory Committee (E&E TAC)—have been preparing for the first in-person Climate Action and Adaptation Plan (CAAP) Workshop. Now that a time and location has been decided and the E&E TAC has provided input on the agenda, staff wish to receive input from the full Commission before finalizing the agenda and associated Facilitator’s Guide. Staff are looking for feedback on the following:

1. The general flow of the agenda; and
2. The high-level prompts for the breakout discussions.

## BACKGROUND

### Logistics

The first in-person Climate Action and Adaptation Plan Workshop is scheduled for Tuesday, *June 20<sup>th</sup> from 6:00 – 8:00PM at the City of Woodland Community and Senior Center at 2001 East St, Woodland, CA 95776*. English and Spanish sessions (with dedicated facilitators) will be held simultaneously. Free dinner and childcare will be provided, and door prizes will be raffled off.

A full, detailed Facilitator’s Guide is being developed for the event, and all facilitators (including staff and Commission members) will receive a brief training to prepare for the event.

Staff are pursuing a wide range of outreach channels including electronic distribution of flyers, posting hard-copies in high-traffic areas, newspaper and radio advertisements, and more.

### The Workshop Arc

This workshop is the first in a series of workshops that will be conducted throughout the CAAP development process. The theme of the workshops is as follows:

- *Workshop Round #1:* Introduce the community to the CAAP and conduct initial high-level discussions on the climate impacts community members are facing, actions the County and individuals can take to address climate change, how we can ensure our process centers equity and a Just Transition. The English and Spanish workshops on June 20<sup>th</sup> are the only workshops in Round #1.
- *Workshop Round #2:* The second round of workshops will take place in Fall 2023 (tentatively October) once the extended CAAP survey has closed. These workshops will be informed by the CAAP survey responses received and will focus on conducting deep-dive conversations on the mitigation, adaptation, and equity strategies that the community wants to see prioritized in the CAAP. The E&E TAC recommends that Round #2 consist of multiple sessions (including at least one virtual session) in communities throughout the County.
- *Workshop Round #3:* The third and final round of workshops will take place in Winter 2024 (tentatively February). It will serve as a launch of the draft CAAP, and a place to collect initial community feedback. The structure and design of the final round of workshops will be discussed at a future date.

Attachment H - DRAFT Agenda for CAAP In-Person Workshop



# CLIMATE ACTION & ADAPTATION PLAN

## Yolo County Climate Action and Adaptation Plan (CAAP) In-Person Workshop #1

### DRAFT Agenda Outline

Below is a DRAFT agenda outline for the first in-person CAAP workshop. A complete facilitator's guide will be developed to accompany the final agenda outline, and a simplified version (ie. the bolded items) will be posted around the room at the in-person workshop. The session will be facilitated by County Staff and Climate Action Commission Members with support from Dudek staff.

Dinner and childcare will be provided at the event; there will be door prizes raffled off.

- 1. Welcome Attendees + Grab Food from Dinner Buffet (10 minutes)**
- 2. Brief Presentation: Introduction to the CAAP (15 minutes)**
  - a. Official welcome & thanks for joining! (5 min)
    - i. Land Acknowledgement
    - ii. Purpose, Goals, and Anticipated Outcomes of the Workshop
    - iii. Overview of Agenda
    - iv. Who we are:
      1. Staff and Commission Member Introductions
      2. Dudek team will be assisting with workshop/CAAP development process
  - b. Slideshow: Overview of CAAP & Process (7 min)
    - i. *Brief History of Climate Action in Yolo County*
    - ii. *What is the 2030 Yolo CAAP?*
      1. Definition (*a roadmap to net-negative emissions by 2030*)
      2. Goal (*make communities more resilient*)
      3. Focus (*emphasis on equity, health, and just transition*)
    - iii. *Overview of Community Engagement Process*
      1. Strategies used
      2. Timeline
      3. Sectors for engagement
    - iv. *Overview of Greenhouse Gas Inventory*
      1. High-level overview of emissions categories to help frame conversations about actions/strategies.
    - v. *Overview of Natural and Working Lands/Concept of Sequestration*
  - c. Slideshow: Overview of Key Terminology (3 min)
    - i. *Equity*
      1. Climate impacts disproportionately felt by low income/BIPOC communities.

ii. *Just Transition*

1. Brief Background
2. Importance of Just Transition to Yolo County

**3. Breakout Sessions (40 min)**

For the breakout portion of the workshop, attendees will have the opportunity to rotate through 4 small-group discussions around the topics of climate impacts, actions the County can take to address climate change, actions individuals can take to address climate change, and a how to ensure a Just Transition. Attendees will have 10min per table (*including time to rotate from discussion to discussion*). Each table will have a facilitator who will take notes on a large post-it pad. In framing this session, the facilitator will encourage participants to share their personal/lived experiences, ideas, and suggestions.

- a. Table #1: Experience Climate Impacts
  - i. Facilitator to ask attendees to share what climate impacts they are experiencing (*heavier rains, more flooding, drought, hotter temperatures, more wildfires, etc.*), and how often these extreme weather events are impacting their lives. Prompt them to think about frequency, level of concern, etc.
  - ii. Prompt attendees to share how they are coping with extreme weather, and what resources/support/information they need to feel more prepared.
- b. Table #2: Actions the County Can Take
  - i. Facilitator to ask attendees to share what they feel the County can do (*policies, projects, etc.*) to reduce the impacts of climate change.
  - ii. Facilitator to share some examples of potential actions such as installing EV charging stations, improving public transportation, etc. (*Facilitator's Guide will contain more examples*).
- c. Table #3: Actions Individuals Can Take
  - i. Facilitator to ask attendees to brainstorm examples of behaviors or actions they already do, or are willing to start, to reduce their own carbon footprint (*facilitator to briefly provide an overview of this concept*).
  - ii. Prompt attendees with ideas such as diversifying agricultural practices, installing green infrastructure (*cool or green roofs*), installing solar panels/using solar appliances in your home, planting drought-tolerant plants, purchasing an electric vehicle (*Facilitator's Guide will contain more examples*).
    1. How quickly would you adopt these practices? What incentives would help you adopt these practices?
    2. What are the barriers to implementing these behaviors/actions?
- d. Table #4: Centering Equity and a Just Transition
  - i. This breakout session is focused on ensuring the strategies, policies, and programs that come out of the CAAP development process are equitable and center a Just Transition.
  - ii. Facilitator to ask attendees to reflect on the following two questions:
    1. What does equity mean to you and your community in the context of climate action and adaptation planning?

2. How can the County ensure that information and resources related to climate action and adaptation are accessible and understandable to diverse audiences?

**4. BREAK (5 min)**

During this break, each of the table facilitators will take 5 minutes to distill down the key themes/concepts discussed during their session and create an updated post-it pad with key points/takeaways from their session (*ie. summary of actions recommended, strategies, climate impacts experience, etc.*).

**5. Breakout Session Report-Outs (20 min; 5min per group)**

- a. Report out on climate impacts experienced (Table #1)
- b. Report out on actions the County can take (Table #2)
- c. Report out on actions individuals can take (Table #3)
- d. Report out on how to center equity/Just Transition (Table #4)

**6. Gallery Walk (10 minutes)**

Following the report-outs, each attendee will be given a sheet of sticker dots and will have the opportunity to walk through the room, visit each of the session summary charts, and place stickers next to the actions/strategies/etc. that resonate most with them.

**7. Looking Forward: Discussion of Community Engagement Opportunities (10 min)**

During this final discussion, the group will come together for a final, forward-thinking discussion focused on providing feedback and recommendations for community engagement moving forward. The facilitator's guide will have several potential prompts, including:

- a. Where would you like to see CAAP resources available (*ie. social media, website, via newspapers, etc.*)?
- b. Do you have recommendations for other opportunities to engage the public in our CAAP process?
- c. Do you have ideas or recommendations for upcoming workshop(s) in terms of content or structure?
- d. Do you have any general comments on the process?

**8. Closeout (10 min)**

- a. Summarize action items
- b. Share date of upcoming meeting(s)/workshop(s)
- c. Share link to QR code for workshop feedback survey.
- d. Share link to QR for the expanded CAAP survey.
- e. Thank attendees for coming!



Attachment I - Staff Report on Expanded Climate Action and Adaptation Plan Survey

# STAFF REPORT

**DATE:** May 22, 2023  
**TO:** Yolo County Climate Action Commission  
**FROM:** Kristen Wraithwall, Sustainability Manager  
**RE:** Review and Provide Input on Expanded Climate Action and Adaptation Plan Survey

## RECOMMENDED ACTION

Review and Provide Input on Expanded Climate Action and Adaptation Plan Survey.

## REASON FOR RECOMMENDED ACTION

Staff—in partnership with Dudek and the Equity and Engagement Technical Advisory Committee (E&E TAC)—have developed a draft, expanded Climate Action and Adaptation Plan (CAAP) survey (*Attachment J*). This survey builds on the initial CAAP survey that has been used for tabling and public engagement events throughout April and May and aims to solicit widespread community feedback on the strategies, policies, programs, and actions that should be prioritized in the CAAP.

## BACKGROUND

This draft survey reflects feedback and input provided by the E&E TAC at their meeting on Wednesday, May 17, 2023 as well as input received from the community during tabling events. Questions that were carried over from the initial, brief CAAP survey are noted with an asterisk (\*) in Attachment J, although the wording of some of these questions has been updated based on feedback received to date. The asterisk is for reference only and will be removed in the final version of this survey.

The primary goals of this expanded survey are as follows:

1. Understand the **community's opinions about climate change and who has the responsibility to act**; use this information to inform future outreach and program development.
2. Understand the **lived experiences of Yolo County community members** when it comes to climate impacts; use this information to prioritize adaptation strategies.
3. Understand the community's perception of **who is responsible for acting on climate change**; use this information to inform messaging and to prioritize mitigation strategies.

4. Understand the **actions Yolo County community members are willing to take** to reduce their own emissions; use this information to inform mitigation strategies and inform future policy and program recommendations (*ie. inform future incentive programs, assess community buy-in, etc.*).

Staff are specifically looking for the following feedback:

1. Do the questions in Attachment J achieve the goals listed above?
2. Are there questions that you recommend rewording, removing, or changing the format of (*ie. replace multiple-choice with open-ended question*)?
3. Are there critical strategies missing from questions 7, 8, 9, 10, 11, or 13?
4. Does the length of this survey feel appropriate? If not, are there sections that you would remove (*ie. remove strategy-related questions and defer to workshops for input on these topics*)?

Distribution of this survey will be highly comprehensive and include electronic distribution of the survey/QR code, posting flyers + QR code advertising the survey in high-traffic areas, newspaper and radio advertisements, press releases, social media, through community outreach partners, and more. Staff will also organize a second round of tabling events this summer to get the word out about the expanded survey. The survey will be open for approximately three months, and will close this fall once the second round of community workshops commences.

Attachment J - DRAFT Extended CAAP Survey Questions



# CLIMATE ACTION & ADAPTATION PLAN

## Expanded Yolo County Climate Action and Adaptation Plan (CAAP) Survey

### Introduction

**We expect this survey will take approximately 10 minutes to complete.** All Yolo County community members who fill out this survey and provide their email and/or phone number will be **entered into a raffle drawing for gift cards and other prizes.**

What is the Climate Action and Adaptation Plan? In 2020, the Yolo County Board of Supervisors set the goal of meeting a carbon-negative footprint by 2030 with a focus on equity and justice. The Climate Action and Adaptation Plan (CAAP) will be a roadmap that outlines the actions that Yolo County will take to meet these greenhouse gas (GHG) emissions reduction goals and help our community be more resilient to climate impacts such as higher temperatures, more frequent wildfires and floods, and drought.

Why should you fill out this survey? The CAAP will be driven by YOUR input! Filling out this survey will help the County design funding programs, policies, and other recommendations for how we can lower emissions, protect our natural resources, and make sure that Yolo County is a thriving, sustainable community for generations to come. Your survey response will ensure that the CAAP reflects and responds to the needs of your community.

If you have any questions about this survey, please email [sustainability@yolocounty.org](mailto:sustainability@yolocounty.org). Thank you for taking the time to provide your feedback!

### Questions

#### Section One: Community Concerns and Observations

1. \*Are you concerned that a changing climate (*heavier rains, more flooding, drought, hotter temperatures, more wildfires, etc.*) will affect you, your family, or your community?
  - a. Not concerned
  - b. Somewhat concerned
  - c. Very concerned
  
2. \*How concerned are you about the following climate change hazards? Please rate each option on a scale of 1 (not concerned) to 5 (very concerned).
  - a. Drought
  - b. Flooding
  - c. Longer, more frequent, more intense heat waves
  - d. Wildfire
  - e. Reduced air quality
  - f. Stronger Storms/Intense Winds
  - g. Effects on tree health, green spaces, natural vegetation
  - h. Effects on already vulnerable community members including food shortages and heat-stressed neighborhoods

- i. Other (please specify): \_\_\_\_\_
3. My family or I have experienced the following impacts due to extreme weather events (*select all that apply*):
- a. Mandatory evacuation
  - b. Damage to private property due to flood
  - c. Damage to private property due to wildfires
  - d. Damage to private property due to intense winds
  - e. Power/electrical outages for more than 24 hours
  - f. Transportation limitations (*such as disruptions to public transportation, impassable roadways*)
  - g. Impact on mental health (*such as anxiety, loss of sense of place*)
  - h. Impact on physical health (*such as asthma, heart condition, high blood pressure*)
  - i. Impact to job security (*such as being unable to work due to heat, flood*)
  - j. Disruptions to goods and services (*such as food, medicine*)
  - k. Other (please specify): \_\_\_\_\_
  - l. None of the above
4. \*Do you and your family feel prepared to deal with extreme weather events?
- a. Yes
  - b. No
  - c. I don't know
5. \*If "No" or "I don't know," what do you feel prevents you and your family from preparing for/handling extreme weather events?
- a. Not enough information on the risks of extreme weather
  - b. Not enough information on how to prepare/I do not know how to prepare
  - c. It costs too much to prepare
  - d. Do not have access to transportation to get to safer places or evacuation centers
  - e. Language barriers - warnings and alerts are not available in the language I speak
  - f. Other (please specify): \_\_\_\_\_
  - g. None of the above
6. On a scale of 1 (highest level of responsibility) to 8 (lowest level of responsibility), please rank who you think has the responsibility for addressing climate change:
- a. Environmental organizations
  - b. Cities
  - c. Counties (like Yolo County)
  - d. Businesses and industries
  - e. State government
  - f. Federal government
  - g. Global government, like the United Nations
  - h. Individuals

## Section Two: Yolo County-Level Greenhouse Gas (GHG) Reduction Strategies

7. Which of the following **transportation strategies** do you support Yolo County implementing to reduce greenhouse gas emissions? Please rate each action on a scale from 1 (strongly disagree) to 5 (strongly agree).

- a. Expand/improve public transit options
  - b. Support alternative modes of transportation such as by improving bicycle infrastructure and safety
  - c. Invest in expanded electric vehicle charging infrastructure
  - d. Provide incentives to existing buildings for installing EV charging infrastructure
  - e. Implement policies to reduce vehicle emissions
  - f. Other (please specify): \_\_\_\_\_
8. Which of the following **energy strategies** do you support Yolo County implementing to reduce greenhouse gas emissions? Please rate each action on a scale from 1 (strongly disagree) to 5 (strongly agree).
- a. Promote locally sourced, renewable electricity
  - b. Increase accessibility of rooftop solar opportunities
  - c. Provide incentives for building all electric buildings, or programs that retrofit existing buildings to become all-electric
  - d. Increase accessibility to home weatherization and energy assistance programs
  - e. Require all new buildings to install solar panels
  - f. Require all new buildings to be electric
  - g. Other (please specify): \_\_\_\_\_

### Section Three: Yolo County-Level Adaptation/Community Resilience Strategies

9. Which of the following **adaptation strategies** do you support Yolo County implementing to help your community adapt to the impacts of climate change? Please rate each action on a scale from 1 (strongly disagree) to 5 (strongly agree).
- a. Build additional community resilience centers and provide backup power sources to critical public facilities.
  - b. Develop a business resiliency initiative and toolkit to help businesses adapt to climate change.
  - c. Expand and provide incentives for cool roofs and cool pavements on public and private property.
  - d. Plant additional trees (increase tree canopy cover) near population centers and gathering places.
  - e. Conduct prescribed burns and post-fire revegetation and restoration.
  - f. Support the development of the local food system.
  - g. Other (please specify): \_\_\_\_\_
10. Which of the following **equity strategies** do you support Yolo County implementing to ensure that the Climate Action and Adaptation Plan is advancing equity and/or supporting a Just Transition?
- a. Create a green jobs corps to train Yolo County community members, particularly young adults with barriers to employment (*e.g., limited education, language/cultural barriers, history in the criminal justice system*) for careers in solar installation, alternative transportation development, green buildings, etc.
  - b. Address homelessness through affordable housing programs.
  - c. Increase tree planting, cool roofs, and cool pavements on public and private property in low-income neighborhoods.
  - d. Offer programs (*e.g., community solar or rainwater harvesting*) for low-income homeowners, renters, and seniors to access solar energy or rainwater harvesting features by reducing up-front costs.

### Section Four: Individual-Level Greenhouse Gas Reduction Strategies

11. Which of the following **energy efficiency improvements** have you already made or are you interested in making or learning more about? (*Selection options are: Already completed; Interested in completing/learning more about; Not interested/Not Applicable; Not sure*).
- Installing rooftop or ground-mounted solar on your property
  - Installing wind turbines on your property
  - Participating in community solar or wind projects that you can invest in or subscribe to
  - Converting your furnace and/or air conditioners to a heat pump
  - Replacing gas appliances (*such as stove*) with high-efficiency electric appliances
  - Replacing old electric appliances with more efficient options
  - Installing low-flow showers, faucets, and toilets to conserve water and reduce the amount of water requiring treatment and the energy used to treat it.
  - Other (please specify): \_\_\_\_\_
12. What **resources or support** would you need to make the above energy efficiency improvements? Please select all that apply.
- Information about these opportunities and how they work in Yolo County
  - Money
  - Help applying for incentives/managing upgrades
  - Information about how to make these changes myself
  - Landlord/building owner agreement to make upgrades
  - No additional support is needed
  - Other (please specify): \_\_\_\_\_
13. Which of the following **transportation options** do you currently use or are willing to use in the future to reduce your carbon footprint? Please select all that apply. (*Selection options are: Already doing this; Interested in doing this/learning more about; Not interested/Not applicable; Not sure*).
- Replacing local car trips with walking/bicycling
  - Carsharing/utilizing vehicle co-op
  - Carpooling and/or vanpooling
  - Using public transportation
  - Driving an electric or hybrid vehicle
  - Working from home or telecommuting
  - Driving less/combining trips
  - Other (please specify): \_\_\_\_\_
14. What **resources or support** would you need to utilize the above options? Please select all that apply.
- Information about these opportunities and how they work in Yolo County
  - Money to upgrade to an EV, bike, riding public transit, etc.
  - More options/increased frequency of public transit routes
  - Landlord/building owner agreement install EV Charging Infrastructure
  - More EV charging infrastructure at my workplace
  - Landlord/building owner agreement install bike parking
  - More secure bike parking options in public places
  - Expansion of dedicated/protected bike lanes to increase comfort when biking
  - No additional support is needed



j. Other (please specify): \_\_\_\_\_

## Section Five: About You!

15. What is your age?

16. How do you describe your gender identity? Please select all that apply.

- a. Female
- b. Male
- c. Transgender
- d. Non-binary
- e. Genderqueer
- f. Gender non-conforming
- g. Two-spirit
- h. Other (please specify): \_\_\_\_\_
- i. Prefer not to respond

17. What racial or ethnic groups describe you? Please select all that apply.

- a. Asian
- b. Black or African American
- c. Hispanic or Latinx
- d. Native American or Indigenous
- e. Middle Eastern or North African
- f. Mixed or Multiracial
- g. Pacific Islander
- h. White or Caucasian
- i. Other (please specify): \_\_\_\_\_
- j. Prefer not to respond

18. What is your current occupation/sector of work?

- a. Agriculture/Farming
- b. Education (*e.g., Teacher, Professor, Administrator*)
- c. Healthcare/Human Services (*e.g., Doctor, Nurse, Healthcare Worker*)
- d. Public Administration (*e.g., Government employee, Civil servant*)
- e. Business/Entrepreneurship (*e.g., Small business owner, CEO, Manager*)
- f. Service Industry (*e.g., Hospitality, Food Service, Retail*)
- g. Manufacturing/Industry (*e.g., Engineer, Machinist, Technician*)
- h. Transportation/Logistics (*e.g., Driver, Logistics Coordinator, Dispatcher*)
- i. Construction/Building Trades (*e.g., Carpenter, Electrician, Plumber*)
- j. Homemaker or Caregiver
- k. Student
- l. Unemployed
- m. Retired
- n. Other (please specify): \_\_\_\_\_
- o. Prefer not to respond

19. What is your zip code?

20. Do you want to stay informed on the development of the Climate Action and Adaptation Plan?

- a. Yes
- b. No

21. \*If yes, how would you like to receive information and provide input on the Climate Action and Adaptation Plan?

- p. Email
- q. Text
- r. Phone
- s. Social Media
- t. Newspaper Ads
- u. Workshops
- v. Other (please specify): \_\_\_\_\_

22. \* Email or Phone Number - If you would like to receive email or text updates on the Climate Action and Adaptation Plan development, please provide your email address and/or phone number.

- w. Email
- x. Phone Number

Attachment K - 2023 Long Range Calendar

## Yolo County Climate Action Commission

Long Range Calendar 2023

**UPDATED – May 18, 2023**

Month	Topics
January	Update on Yolo County Storm Response and Recovery
February	Discussion on Outreach Materials to Agricultural Community ( <i>Interview Questions and Sequestration Strategies</i> ) Discussion on Carbon Sequestration Methodology Discussion on Consumption-Based Inventory
March	Establishing Technical Advisory Committees Discussion on Equity Engagement Strategy and Communications Plan Outline Revisit Yolo Agricultural Equipment Retrofit Program Early Action Project
April	Begin In-Person Outreach Events for Climate Action and Adaptation Plan Update on Outcomes of First Round of Tabling Events Introduce Equity and Engagement (E&E) Technical Advisory Committee (TAC) Introduce Natural and Working Lands (NWL) TAC
May	Update to Board of Supervisors (BOS) on ARP Progress Yolo Agricultural Equipment Retrofit Program Early Action Project to BOS Launch Solicitation for Community Outreach Partners Review CAAP Online Portal Review Expanded CAAP Survey Review Agenda for In-Person CAAP Workshops
June	Discussion on Food System and Connection to Consumption-Based Inventory Launch of Expanded CAAP Survey First CAAP Workshop   June 20 <sup>th</sup> CAAP Table of Contents Discussion on Commission Term Renewals and Leadership
July	Second round of CAAP Tabling Events Launches
August	
September	Discuss Second Round of Early Action Projects Second CAAP Workshop
October	
November	
December	