



ENGINEER'S REPORT

Esparto Fire Protection District

Fire Protection and Emergency Response Services
Assessment

Fiscal Year 2023-24

Pursuant to California Government Code Section 50078
et seq., Health and Safety Code Section 13914 and
Article XIID of the California Constitution

Engineer of Work:



SCI Consulting Group
Public Finance Consulting Services

4745 Mangels Boulevard
Fairfield, California 94534
707.430.4300
www.sci-cg.com

Esparto Fire Protection District

Board of Commissioner's

- Rudy Lucero, Chairman
- Barry P. Burns, Commissioner
- David Schwenger, Commissioner
- Mitch Roath, Commissioner
- John Hulsman, Jr., Commissioner

Fire Chief

- Curtis Lawrence, Fire Chief

Table of Contents

Introduction..... 4
 Legal Analysis of Proposition 218..... 7

Assessment Process 10

Description of Services..... 12

Cost and Budget..... 15

Method of Apportionment 17
 Implementation of an Assessment for Fire Protection Services 17
 Overview of Special Benefits from Fire Protection Services 19
 Description of Special Benefit From Fire Protection Services 19
 General Versus Special Benefit 21
 Calculating General Benefit..... 22
 Summary of General Benefits 26
 Zones of Benefit 27
 Assessment Apportionment..... 27
 Method of Assessment..... 27
 Assessments Calculation 36
 Appeals of Assessments Levied to Property 37
 Additional Background on Relative Benefit 37
 Criteria and Policies 38
 Duration of Assessment 38

Assessment..... 39

Assessment Diagram..... 41

Appendix A – Fire Hazard Areas Diagram 43

Appendix B – Response Areas Travel Time Diagram..... 44

Appendix C – Assessment Roll, Fiscal Year 2023-24..... 45

End Notes 46

List of Tables

Table 1 – Proposed Assessment Rates.....	6
Table 2 – Apparatus and Equipment Replacement Plan	14
Table 3 – Cost and Budget	15
Table 4 – Emergency Medical Expenses Versus Overall Budget.....	25
Table 5 – Normalized Fire Risk Factors	30
Table 6 – Structure Replacement Factors.....	31
Table 7 – Benefit Summary per Property Type.....	32
Table 8 – Fire Hazard Zone Risk Factors	34
Table 9 – Travel Time Premium Factor	36
Table 10– Summary Cost Estimate	39

Introduction

The Esparto Fire Protection District (“Esparto FPD,” “Fire District,” or “District”), was originally formed in 1931 and provides fire protection, fire prevention and emergency response services to the communities of Esparto and Capay, and the surrounding unincorporated areas. Esparto FPD is primarily staffed with volunteer firefighters supplemented with reserve and full-time career firefighters.

The Esparto FPD is governed by Yolo County Board of Supervisors above a local, dependent, five-member Board of Fire Commissioners. The Yolo County Board of Supervisors can delegate any of its power to the Board of Fire Commissioners.

The Fire District covers approximately 80 square miles and serves an approximate population of 3,780. The District operates out of one fire station in Esparto. Esparto FPD responds to over 550 service calls per year, including structure fires, brush fires, vegetation fires, vehicle fires, traffic collisions, search and rescues, hazardous materials incidents and emergency medical calls. In addition, Esparto FPD provides fire prevention, community education, emergency preparedness and other services relating to the protection of lives and property.

The proposed assessment district described in this Engineer’s Report is intended to provide an ongoing secure funding source for local fire protection services. Esparto FPD is funded through a small portion of local property taxes, miscellaneous fees, and a static \$35 per residences special assessment that has remained unchanged since 1997. This existing assessment does not include a cost-of-living index adjustment mechanism.

The cost of providing fire protection and emergency response services continues to rise each year due to increasing emergency calls, enhanced firefighter training requirements, the growing wildfire risk to the community, and substantial increases in operational costs, including fuel, utilities, equipment, insurance, and personnel over the last 25 years.

Competitive wages in neighboring agencies have made it increasingly difficult for the Fire District to retain and attract firefighters. The number of volunteers that are available to respond to calls has decreased over the years due to increased training demands and a growing call volume. In addition, social and economic changes in recent years are leading to two-income families and more commuters not working in the District to respond to calls during typical work hours.

The Fire District is not funded by the State or County and has never received any funding from the now-suspended Cal Fire Prevention Fee. In addition, the lack of a cost-of-living adjustment in the property owner approved special assessment has left the District unable to keep pace economically with the increased costs of operations, of which staffing and personnel costs are the primary expenditure.

A new funding source will help address the wage disparity and, in turn, increase the retention of our locally trained firefighters. Adequate staffing also allows the Fire District to assemble the recommended number of personnel on the scene of an incident quicker, which is a factor for your Insurance Services Office (ISO) rating, affecting insurance rates. A negative change in ISO rating could result in higher costs with possibly lower coverage limits or the complete loss of homeowners insurance coverage

Esparto FPD seeks to maintain a high level of fire protection and emergency response service by maintaining appropriate staffing levels and providing improved apparatus replacement, maintenance of facilities, and increase in local firefighter wages.

This Engineer's Report supports a proposed new assessment to enhance existing funding sources, associated services and equipment, and fund these improved services and equipment. The proposed rates for this proposed assessment are shown in Table 1, below.

Table 1 – Proposed Assessment Rates

Property Type	Proposed Rate	Unit
Single Family	\$141.35	each
Multi-Family	\$58.65	res unit
Commercial/Industrial	\$1,050.97	acre
Office	\$277.06	acre
Storage	\$772.06	acre
Parking Lot	\$25.88	each
Vacant	\$18.93	each
Agriculture	\$3.59	acre
Range Land & Open Space	\$0.21	acre

These proposed assessment rates, adjusted by the relative fire hazard zone factor and the relative travel time factor, are used to calculate the specific assessment for each parcel. These factors are explained in more detail in the Method of Apportionment section of this report.

This Engineer's Report (the "Report") was prepared to:

- Describe the fire suppression, safety and emergency response services and equipment that would be funded by the assessments (the "Services")
- Establish a budget for the Services that would be funded by the assessments in 2023-24
- Determine the special benefits received from the proposed Services by property within the Esparto Fire Protection District Assessment (the "Assessment District"), and
- Describe the method of apportionment to lots and parcels within the Assessment District.

This Report and the proposed assessments have been made in compliance with California Government Code Section 50078 et seq., Health and Safety Code Section 13914 (the "Code") and Article XIID of the California Constitution (the "Article").

The Assessment District is narrowly drawn to include only properties that directly receive the additional fire protection and prevention services provided by the assessment funds and are specially benefited from such Services. The Assessment Diagram included in this Report shows the boundaries of the Assessment District.

Legal Analysis of Proposition 218

The proposed assessment complies with Proposition 218, The Right to Vote on Taxes Act, which was approved by the voters of California on November 6, 1996 and is now Articles XIII C and XIII D of the California Constitution. Proposition 218 provides for benefit assessments to be levied to fund the cost of providing services, improvements, as well as maintenance and operation expenses of a public improvement that provide a special benefit to the assessed property.

Proposition 218 imposes a number of important requirements, including property-owner balloting, for the formation and continuation of assessments, and these requirements are satisfied by the process used to establish this assessment.

Silicon Valley Taxpayers Association, Inc. v Santa Clara County Open Space District (2008) 44 Cal.4th 431

On July 14, 2008, the California Supreme Court issued its ruling in *Silicon Valley Taxpayers Association, Inc. v. Santa Clara County Open Space District* (“*Silicon Valley*”). Several of the most important elements of the ruling are:

- Benefit assessments are for special, not general benefit
- The services and/or improvements funded by assessments must be clearly defined
- Special benefits are directly received by and provide a direct advantage to property in the Assessment District

Dahms v. Downtown Pomona Property (2009) 174 Cal.App.4th 708

On June 8, 2009, the Court of Appeal amended its original opinion upholding a benefit assessment for property in the downtown area of the City of Pomona. On July 22, 2009, the California Supreme Court granted review and transferred the case back to the Court of Appeal for reconsideration in light of the Supreme Court’s discussion in the *Silicon Valley* case. In *Dahms*, the Appellate Court then upheld the assessment that was 100% special benefit (i.e. 0% general benefit) holding that the services and improvements funded by the assessments were directly provided to property in the assessment District. The Court also upheld discounts and exemptions from the assessment for certain properties.

Bonander v. Town of Tiburon (2009) 46 Cal.4th 646

On December 31, 2009, the Court of Appeal overturned a benefit assessment approved by property owners to pay for placing overhead utility lines underground in an area of the Town of Tiburon. The Court invalidated the assessments on the grounds that the assessments had been apportioned to assessed property based in part on relative costs within sub-areas of the assessment district, instead of each individual property's proportional special benefits.

Beutz v. County of Riverside (2010) 184 Cal.App.4th 1516

On May 26, 2010, the California Court of Appeal issued its decision in *Steven Beutz v. County of Riverside* ("Beutz"). This decision overturned an assessment for park maintenance in Wildomar, California, primarily because the general benefits associated with improvements and services were not explicitly calculated, quantified, and separated from the special benefits.

Golden Hill Neighborhood Association V. City of San Diego (2011)199 Cal.App.4th 416

On September 22, 2011, California Court of Appeal issued its decision in *Golden Hill Neighborhood Association v. City of San Diego*. This decision overturned an assessment for street and landscaping maintenance in the Greater Golden Hill neighborhood of San Diego, California. The court described two primary reasons for its decision. First, as in *Beutz*, the court found the general benefits associated with services were not explicitly calculated, quantified and separated from the special benefits. Second, the court found that the City had failed to document the basis for the assessment on city-owned parcels.

Compliance with Current Law

This Engineer's Report is consistent with the requirements of Article XIII C and XIII D of the California Constitution and with the *Silicon Valley* decision because the Services to be funded are clearly defined; the Services are available to and will be directly provided to all benefited property in the Assessment District; the Services provide a direct advantage to property in the Assessment District that would not be received in the absence of the assessment; and the Services are benefits that are over and above general benefits conferred on real property located in Esparto FPD or to the public at large by other public entities that make up the membership of Esparto FPD.

This Report is consistent with *Dahms* because, similar to the *Downtown Pomona* assessment validated in *Dahms*, the Services will be directly provided to property in the Assessment District. More specifically, as discussed hereafter, the Services afford benefits specifically unique and supplied only to property owners within the District, with a corresponding effect that is not shared by other parcels outside of the District or real property in general, including the public at large. While *Dahms* could be used as the basis for a finding of 0% general benefits, this Engineer's Report establishes a more generous separation and quantification of general benefits.

This Report is also consistent with *Bonander* because the Assessment has been apportioned based on the proportional special benefit to each property. Furthermore, the Assessment is consistent with *Beutz* and *Golden Hill* because the general benefits have been explicitly calculated, quantified, and excluded from the Assessment.

Assessment Process

Following submittal of this Report to Esparto FPD for preliminary approval, the Esparto FPD Board of Directors (the "Board") may, by Resolution, call for an assessment ballot proceeding and public hearing on the proposed establishment of a Fire Protection and Emergency Response Services Assessment.

If the Board approves such a Resolution, a Notice of Assessment and Assessment Ballot will be mailed to each property owner within the proposed Assessment District boundaries who will be subject to the proposed assessment. The Notice will include a description of the Services to be funded by the proposed assessment, the total amount of the proposed assessment and the amount chargeable to the owner's parcel, the reasons for the proposed assessment and the basis upon which it was calculated, and an explanation of the process for submitting a ballot. Each Notice will also include a postage prepaid return envelope and a ballot on which the property owner may mark his or her approval or disapproval of the proposed assessment as well as affix his or her signature.

After the ballots are mailed to property owners in the Assessment District, a minimum 45-day time period must be provided for the return of the assessment ballots. Following this balloting time period, a public hearing must be held for the purpose of allowing public testimony regarding the proposed assessments. Ballots will be received if previously mailed and received by the public agency before the public hearing, or if physically submitted at the public hearing. At the public hearing, the public will have the opportunity to speak on the issue. The public hearing is currently scheduled to open July 13, 2023. After receiving ballots and public comment, the public hearing will be closed. The Board will then recess in order that the ballots can be tabulated.

If it is determined that the assessment ballots submitted in opposition to the proposed assessment do not exceed the assessment ballots submitted in favor of the assessment (weighted by the proportional financial obligation of the property for which ballots are submitted), the Board may approve the imposition of assessment for fiscal year 2023-24 and each fiscal year thereafter. If the assessment is confirmed and approved, the Board will order the levy of the assessment to be submitted to the Yolo County Auditor/Controller for inclusion on the property tax roll for Fiscal Year 2023-24. The levy and collection of the assessment would continue year-to-year until terminated by the Board.

The assessment granted by the ballot proceeding would be for a maximum assessment rate of \$141.35 per single family home, increased each subsequent year by the consumer price index not to exceed 5% per year.

In each subsequent year for which the assessment will be continued, an updated proposed budget, assessment rate and an updated assessment roll listing all parcels and their proposed assessment for the upcoming fiscal year shall be prepared and considered by the Board of Directors. At this meeting, the Board will also call for the publication in a local newspaper a legal notice of the intent to continue the assessment for the next fiscal year and set the date for the noticed public hearing. At the annual public hearing, members of the public can provide input to the Board prior to the Board's decision on continuing the services and assessment for the next fiscal year.

If the assessment is confirmed and approved, the levies would be submitted to the Yolo County Auditor/Controller for inclusion on the property tax roll for Fiscal Year 2023-24.

Description of Services

Esparto FPD provides a range of fire suppression and protection, prevention, and other fire and emergency-related services to properties within its boundaries.

This proposed benefit assessment would provide funding for three major areas of service improvements within the District for its' fire suppression and protection operations (with the majority of the proposed assessment revenue being dedicated to firefighter retention.)

- Increased Firefighter Staffing and Training
- Improved Maintenance and Replacement of Apparatus and Equipment
- Other Services and Supplies

The Esparto FPD fire station is located at 16960 Yolo Ave, Esparto, CA 95627

The formula below describes the relationship between the final level of services, the baseline level of service based on existing funding, and the enhanced level of services funded by the assessment if it is approved. It should be noted, due to the fact that current operating costs are increasing at a faster rate than current funding sources, the baseline level of services is diminishing over time.

<i>Final Level of Service</i>	=	<i>Current and Diminishing Baseline Level of Service</i>	+	<i>Proposed Enhanced Level of Service</i>
-------------------------------	---	--	---	---

Below is a more detailed description of these improvements that are provided for the special benefit of property in the Assessment District.

Increased Firefighting Staffing and Training

Firefighting emergency response staffing levels are described colloquially in terms of "speed and weight," with speed describing the response time and weight describing the number and types of personnel. Also, staffing levels are also commonly described in terms of the number of firefighting staff per fire truck and/or apparatus, such as "4 on an initial response" or "3 on an initial response." Esparto Fire is satisfied with its response time ("speed") but has determined that its staffing levels ("weight") need to be improved.

Although there are many approaches to deploying firefighting staff, OSHA guidelines place strict requirements on operations, particularly when firefighters are required to enter potentially Immediately Dangerous to Life and Health (IDLH) environments such as structure fires. In these atmospheres, OSHA requires that personnel use self-contained breathing apparatus (SCBA), that a minimum of two firefighters work as a team inside the structure, and that a minimum of two firefighters be on standby outside the structure to provide assistance or perform rescue.

To meet the “2 in, 2 out” standard, the National Fire Protection Agency (NFPA) recommendation is four (4) personnel per apparatus in a community of this size and risk. The District cannot meet the NFPA recommendation due to budget constraints. The next best option is to align with industry standards and respond adequately to calls by staffing all apparatus with three (3) personnel.

Essentially the “2 in, 2 out” rule severely limits Esparto FPD’s ability to respond effectively to many types of emergencies. The challenge is compounded in the case of multiple calls. Esparto FPD has determined that an increase in staffing would significantly increase its effectiveness, as well as compliance with OSHA requirements, and would benefit the property owners with heightened levels of property and human life protection.

Improved and increased firefighting staffing levels will significantly contribute to improved safety and protection of real property within the proposed Assessment District.

The proposed assessment is intended to provide funding for additional full-time-staffing, and some additional training. The costs for the proposed staffing increases would support the implementation of “3 on an initial response” staffing are included in the Table 3 Budget.

Improved Maintenance and Replacement of Apparatus and Equipment

Esparto FPD desires to ensure maintenance and replacement of apparatus in order to maximize safety and effectiveness for fire suppression. Improved maintenance and replacement will significantly contribute to improved safety and protection of real property. It should be noted that the need for equipment replacement will be ongoing. If approved, the proposed assessment will fund this replacement plan by allocating \$85,000 per year to the apparatus and equipment replacement fund. Table 2 below lists the replacement plan for apparatus and equipment.

Table 2 – Apparatus and Equipment Replacement Plan

Fiscal Year	Apparatus	Estimated Amount
2034-35	Engine - T1 - E19	\$1,154,590
2035-36	Command Pick-up, 1900	\$128,082
2047-48	Engine - T1/T3 - E219	\$1,643,342
2051-52	Water Tender -Tactical - T2 - W19	\$897,156
2057-58	Engine - T3 - B19	\$1,325,426
	Estimated Unfunded Total	\$5,148,596

Other Services and Supplies

The budget shown in Table 3 includes and summarizes budget allocations for firefighter staffing and training, equipment and apparatus maintenance and replacement, capital repairs, equipment operation and maintenance, professional services, supplies and materials, utilities and administration in support of Esparto FPD's operations.

Cost and Budget

The following budget lists the proposed expenditures funded by the Assessment District in Fiscal Year 2023-24.

Table 3 – Cost and Budget

Esparto Fire Protection District	
Estimate of Costs	
Fiscal Year 2023-24	
Budget Item	Amount
Service, Appartus and Equipment Needs	
Firefighter Staffing and Training	\$612,914
Equipment and Apparatus Maintenance and Replacement	\$85,000
Station Improvements and Renovations	\$10,000
Capital Repairs	\$25,000
Equipment Operation and Maintenance	\$35,000
Professional Services	\$8,000
Supplies and Materials	\$119,552
Utilities	\$16,200
Administration	\$14,169
Contingency	\$27,775
Total Service Needs (a)	\$953,610
Less: Est. Dedicated Revenue from Property Taxes & Other Sources (b)	-\$245,076
Less: Est. Dedicated Revenue from Current Benefit Assessment (c)	-\$76,711
Less: Contribution from the County	-\$205,006
Est Total Revenue from Other Sources (General benefit contribution) (b+c) = (d)	-\$526,793
Net Cost of Servicing to Assessment District (a-d) = ('e)	\$426,817
Allowance for County Collection (e * 1%) = (f)	\$4,268
Total Fire Suppression and Protection Services Budget (e-f) =(g)	\$431,085
Total Proposed Assessment Budget (g)	\$431,085
Effective Single Family Equivalent Benefit Units in Assessment District (h)	2,811.61
Single Family Equivalent Benefit Units from Future Planned Development (i)	238.15
Proposed Assessment per Effective Single Family Equivalent Unit (SFE) (g/h+i)	\$141.35

The "Service Needs" cost estimates are presented in the budget table above for the 2023-24 fiscal year only, but are based upon financial forecasting over a 10-year cycle and beyond. This forecasting concludes that these costs will likely persist consistently into the future. Consistent with the General Benefit requirement described later in this Report, at least 12% of the total cost of the Esparto FPD Fire Services must be funded from sources other than this proposed assessment to cover any general benefits from the Services. Therefore, the cost of services of \$953,610 funded by the proposed assessment can be funded exclusively through the assessment levy as a special benefit since the current County contributions from its dedicated ad valorem

property taxes, other sources and the existing benefit assessment revenue exceed approximately 55.24%. (\$526,793/\$953,610) of the total cost of Esparto FPD Fire Services, far in excess of the above required 12% non-assessment general benefit funding requirements. The 55.24% funding is from property taxes and other sources. The Total SFEs are the sum of the assigned Single Family Equivalent units for each affected parcel based upon a parcel-by-parcel analysis of the service area consistent with the Method of Apportionment described later in the Report.

Method of Apportionment

This section includes an explanation of the special benefits to be derived from the Services, the criteria for the expenditure of assessment funds, and the methodology used to apportion the total assessment to properties within the Assessment District.

The Assessment District area consists of all Assessor Parcels within Esparto FPD boundaries. The method used for apportioning the assessment is based upon the proportional special benefits from the Services to be provided to the properties in the assessment area over and above general benefits conferred on real property or to the public at large. Special benefit is calculated for each parcel in the Assessment District using the following process:

1. Identification of all benefit factors derived from the improved services
2. Calculation of the proportion of these benefits that are general
3. Determination of the relative special benefit within different areas within the Assessment District
4. Determination of the relative special benefit per property type
5. Calculation of the specific assessment for each individual parcel based upon special vs. general benefit; location, property type, property characteristics, improvements on property and other supporting attributes

Implementation of an Assessment for Fire Protection Services

California Government Code Section 50078 et. seq. allows agencies which provide fire suppression services, such as Esparto FPD, to levy assessments for fire suppression services. Section 50078 states the following:

“Any local agency which provides fire suppression services directly or by contract with the state or a local agency may, by ordinance or by resolution adopted after notice and hearing, determine and levy an assessment for fire suppression services pursuant to this article.”

In addition, California Government Code Section 50078.1 defines the term “fire suppression” as follows:

“(c) “Fire suppression” includes firefighting and fire prevention, including, but not limited to, vegetation removal or management undertaken, in whole or in part, for the reduction of a fire hazard.”

Therefore, the Services to be provided by the Assessment District fall within the scope of services that may be funded by assessments under the Code.

The assessment must be levied based on the special benefit to property. Special benefit means a particular and distinct benefit received by property over and above any general benefits conferred on real property located in the Assessment District or the public at large. With reference to the requirements for assessment, Section 50078.5 of the California Government Code states:

"(b) The benefit assessment shall be levied on a parcel, class of improvement to property, or use of property basis, or a combination thereof, within the boundaries of the local agency, zone, or area of benefit."

"The assessment may be levied against any parcel, improvement, or use of property to which such services may be made available whether or not the service is actually used."

Health and Safety Code Section 13914 states:

A [fire protection] district may levy an assessment for fire suppression services pursuant to Article 3.6 (commencing with Section 50078) of Chapter 1 of Part 1 of Division 1 of Title 5 of the Government Code.

Proposition 218, as codified in Article XIII D of the California Constitution, has confirmed that assessments must be based on the special benefit to property:

"No assessment shall be imposed on any parcel which exceeds the reasonable cost of the proportional special benefit conferred on that parcel."

Since assessments are levied on the basis of special benefit, they are not a tax and are not governed by Article XIII A of the California Constitution.

The following two sections describe how and why the Fire Protection Services specially benefit properties. This special benefit is particular and distinct from its effect on other property, and that other real property and the public at large do not share the special benefit.

Overview of Special Benefits from Fire Protection Services

Special Benefit is defined in Article XIID of the California Constitution as a “particular and distinct benefit over and above general benefits.” The proposed services and improvements provide “particular and distinct” benefit because they are distinctly defined and described, and are provided directly to the parcels within the Assessment District boundaries. The proposed services and improvements are “over and above general benefits” currently supplied by the Esparto FPD and other agencies.

Moreover, this assessment for fire protection services can be clearly contrasted with assessments for parks and recreation, or even open space, as addressed in *Silicon Valley*, because fire services are provided directly to individual parcels in the form of fire prevention and suppression; by contrast, property owners must travel from their properties to dispersed locations to fully enjoy the benefits of parks and open space.

In summary, real property located within the boundaries of the proposed Assessment District distinctly and directly benefits from increased safety and protection of real property and human life in the Assessment District.

Description of Special Benefit From Fire Protection Services

In order to allocate the assessments, the special benefit arising from the Services that will be provided to property in the Assessment District has been identified and described below. This special benefit must confer a direct advantage to the assessed properties; otherwise it would be general benefit, as described further in this report.

The following special benefit confers to residential, commercial, industrial, institutional, and other lots and parcels resulting from the improved fire protection and emergency response services that will be provided in the Assessment District. This special benefit is summarized as follows:

Increased safety and protection of real property assets for all property owners within the Assessment District.

The proposed Assessments will fund improved fire suppression, prevention, protection and emergency response services, and thereby can significantly reduce the risk of property damage, human injury, or death associated with fires within the assessment District. Clearly, fire mitigation helps to protect and specifically benefits both improved properties and vacant properties in the Assessment District.

"Fire is the largest single cause of property loss in the United States. In the last decade, fires have caused direct losses of more than \$120 billion and countless billions more in related cost."¹

"Over 140,000 wildfires occurred on average each year, burning a total of almost 14.5 million acres. And since 1990, over 900 homes have been destroyed each year by wildfires."²

"The strategies and techniques to address fire risks in structures are known. When implemented, these means have proven effective in the reduction of losses."³

The proposed improved fire suppression, prevention, protection, and emergency response services support this special benefit by providing Esparto FPD with the needed resources to protect real property from uncontrolled fires.

The proposed increased firefighting staffing supports this special benefit by providing needed personnel resources. For instance, current OSHA regulations require that two firefighters remain outside a structure during an emergency response to a structure fire, while two firefighters may enter. *(This OSHA Policy is documented as United States Department of Labor - Occupational Safety and Health Administration — OSHA Regulation "2 in 2 out"— The "2In/2 Out" policy is part of paragraph (g)(4) of OSHAs revised respiratory protection standard, 29 CFR 1910.134.)*

This "2 in, 2 out" requirement places significant limitations on Esparto FPD's ability to respond to structure fires, particularly when second and third calls are made. The proposed assessment would allow Esparto FPD to optimize staffing levels and respond with the industry standard of "3 on an initial response" on significantly more emergency calls. Properties receive direct special benefit from the increased staffing because the increase in staffing in turn increases the likelihood that property and life will be protected. For example, if only two firefighters are available to respond to a structure fire, no firefighter would be allowed to enter the structure –significantly delaying critical fire suppression activity.

The increased firefighting staffing specifically satisfies the strict legal requirements of the *Silicon Valley* decision in that these Services are clearly defined, are available to and will be directly provided to all benefited property, and will provide a direct advantage that would not be received in the absence of the assessment.

General Versus Special Benefit

Article XIII D of the California Constitution requires any local agency proposing to increase or impose a benefit assessment to “separate the general benefits from the special benefits conferred on a parcel.”

In other words:

$$\text{Total Benefit} = \text{General Benefit} + \text{Special Benefit}$$

The rationale for separating special and general benefits is to ensure that property owners subject to the benefit assessment are not paying for general benefits. The assessment, therefore, can fund special benefits but cannot fund general benefits.

Please note that the property owners of the parcels subject to the assessment *should not* and *cannot* be required to pay for the general benefits arising from the proposed service and equipment improvements – this is an essential assessment-payer-protection requirement of all Proposition 218–compliant assessments. In order to clearly and overwhelmingly satisfy this important requirement, the general benefit has been calculated in each step favoring its reasonable maximum to totally avoid any possibility that the total general benefit to be funded from other sources is under-calculated.

There is no statutory formula to calculate, quantify and separate general benefit in support of benefit assessment analysis. General benefits are benefits from improvements or services that are not special in nature, are not “particular and distinct,” and are not “over and above” benefits received by other properties, or the public at large. *Silicon Valley* provides some clarification by indicating that general benefits provide “an indirect, derivative advantage” and are not necessarily proximate to the improvements. Again, in this Report, the general benefit is generously estimated and described, and then budgeted so that it is funded by sources other than the assessment. Although there is not an industry standard for this general benefit calculation, the three-component (plus an adjustment for emergency medical) approach shown in the formula below has been the most-widely used.

<p>1.) <i>Benefit to Real Property Outside the Assessment District</i></p> <p>+ 2.) <i>Benefit to Real Property Inside the Assessment District that is Indirect and Derivative</i></p> <p>+ 3.) <i>Benefit to the Public at Large</i></p> <p>+ <i>(Adjustment for Emergency Medical Services)</i></p>
<p>= <i>General Benefit</i></p>

Special benefit, on the other hand, is defined in the California Constitution as “a particular and distinct benefit over and above general benefits conferred on real property located in the district or to the public at large.” The *Silicon Valley* decision indicates that a special benefit is conferred to a property if the property “receives a direct advantage from the improvement (e.g., proximity to a park).” In this assessment, as noted previously, the improved Services are available when needed to all properties in the Assessment District, so the overwhelming proportion of the benefits conferred to property is special, and the benefits are only minimally received by property outside the Assessment District or the public at large.

Calculating General Benefit

This section provides a measure of the general benefits from the assessments.

1.) Benefit to Property Outside the Assessment District

Properties within the Assessment District receive almost all of the special benefits from the Services because the Services will be provided solely in the Assessment District boundaries. (It should be noted that the Services may, at times, be used outside the Esparto FPD boundaries. However, this use is part of a mutual aid agreement and is offset, at least in part, by the provision of Services by other outside agencies within the Assessment District boundaries.)

Properties proximate to, but outside of, the boundaries of the Assessment District receive some benefit from the proposed Services due to some degree of indirectly reduced fire risk to their property. Specifically, the parcels immediately contiguous to Esparto FPD's boundaries enjoy a reduction to the possibility of a fire "jumping" from an adjacent structure (within the Esparto FPD boundaries) because Esparto FPD controls structure fires within its boundaries. Because Esparto FPD's primary role is directed towards structure fires, as opposed to wildland fires, and structure fires generally "jump" more slowly, it is reasonable to only consider the directly adjacent, but outside, parcels. These are estimated to receive some benefit relative to parcels within the Assessment District, but they do not directly receive the improved fire protection resulting from the Services funded by the Assessments.

At the time the Assessment was proposed, the Engineer of Work, using the Geographic Information Systems, quantified the number of parcels proximate to the Assessment District boundary but outside the Assessment District, and thereby determined that there were approximately 107 directly adjacent properties. Further consideration of the types, use, location and other attributes of the outside but proximate parcels is not warranted due to numeric insignificance, and would not materially increase the accuracy of this analysis:

107 parcels outside Esparto FPD but proximate to the District Boundaries

***1,574** parcels in the Assessment District.*

Calculation:

*General Benefit to Property Outside the Assessment District =
107 / (1,574+107) = **6.37%**: ~ rounded to **7.0%***

It can reasonably be argued that properties protected inside, but near the Assessment District boundaries, are offset by similar fire protection provided outside, but near, the Assessment District's boundaries, through mutual aid agreements. However, this analysis uses the more generous approach of finding that 7.0% of the Services may be of general benefit to property outside the Assessment District, and cannot be funded by this assessment.

2.) Benefit to Property Inside the District that is *Indirect and Derivative*

In determining the proposed Assessment District area, Esparto FPD has been careful to only include parcels that will directly receive the benefit of the improved Services. All parcels will directly benefit from the use of the improved Services throughout the Assessment District in order to maintain the same improved level of fire suppression and protection throughout the area. Fire protection and suppression will be provided as needed throughout the area. The shared special benefit - reduced severity and number of fires - would be received on an equivalent basis by all parcels in the Assessment District due to the proposed increased funding. Furthermore, all parcels in the Assessment District would directly benefit from the ability to request or receive service from Esparto FPD and to have an Esparto FPD resource promptly respond directly to the parcel and address the owner's or resident's service need.

The *Silicon Valley* decision indicates that the fact that a benefit is conferred throughout the Assessment District area does not make the benefit general rather than special, so long as the Assessment District is narrowly drawn and limited to the parcels directly receiving shared special benefits from the service. This concept is particularly applicable in situations involving a landowner-approved assessment-funded extension or improvement of a local government service to benefit lands. This Report therefore concludes that, other than the general benefit to properties outside the Assessment District (discussed above) and to the public at large (discussed below), the general benefit from the fire protection services that is "indirect and derivative" is negligible.

3.) Benefit To The Public At Large

Because the Services directly serve and benefit all of the property in the Assessment District, any general benefit conferred on the public at large would be small.

The public at large uses the public highways, and when traveling in and through the Assessment District the public may benefit from the services without contributing to the assessment. Although the protection of this critical infrastructure is certainly a benefit to all the property within Esparto FPD, this protection is arguably "indirect and derivative" and possibly benefits people rather than property. A fair and appropriate measure of the general benefit to the public at large therefore is the amount of highway and throughway street area within the Assessment District relative to the overall land area. An analysis of maps of the Assessment District shows that approximately 0.36% of the land area in the Assessment District is covered by highways and throughway streets.

A 1.0% contribution therefore is a generous, fair and appropriate measure of the general benefit to the public at large within the Assessment District and cannot be funded by this assessment.

Adjustment to Account for Emergency Medical Services as General Benefit

For the purposes of this Report, an additional adjustment has been made to the general benefits calculation to account for general benefits that may result from the District's rescue and emergency medical services ("EMS") associated with the proposed Services. *(Limitations on the appropriateness of Proposition 218-compliant assessments to fund EMS is still debated - in any case, this assessment does not include funding for EMS).* This assessment is designed to provide funding for fire protection and emergency response services, including fire-related and non-fire-related rescue and associated medical services. However, it is not designed to fund typical, non-fire/non-rescue medical calls (e.g., a cardiac arrest medical call).

Esparto FPD is authorized to provide EMS in addition to its primary responsibility of fire prevention and suppression. In fact, a significant portion of Esparto FPD's emergency service calls are associated with providing EMS. Nonetheless, the largest portion by far of the costs associated with operating Esparto FPD is support for fire suppression services as illustrated in Table 4, below.

Incremental costs associated with non-fire/non-rescue emergency medical service include almost exclusively the operating costs associated with transportation to such calls such as fuel and maintenance. For further clarification, these are costs that are only incurred because of EMS, and do not include fixed costs such as personnel who would be on active duty in any case as well (as the associated training), and would therefore be incurred in any event in satisfying Esparto FPD's primary responsibility of fire protection and suppression.

Evaluation of the transportation associated with non-fire/non-rescue emergency medical calls for several similar fire districts in California indicates that typically around 2% of overall operating costs are for such calls. An analysis of Esparto FPD's actual additional costs for non-fire/non-rescue emergency medical calls is shown in Table 4, below, and supports an adjustment of 3.2%. This adjustment has generously been rounded up to 4%.

Table 4 – Emergency Medical Expenses Versus Overall Budget

Emergency Medical Expenses	Annual Costs
EMS Fuel Cost	\$7,166.03
EMS Apparatus Operations and Maintenance Cost	\$12,540.55
EMS Supplies and Equipment	\$5,400.00
Annual EMS Training and Certification Costs	\$5,400.00
Total EMS Cost (a)	\$30,506.57
<hr/>	
Total Budget from Table 4 (b)	\$953,610.31
Percentage of Total Budget on Emergency Medical (a/b)	3.2%

The proposed assessment, as indicated through this Report, will exclusively fund special benefits conferred upon the properties within Esparto FPD boundaries, while EMS is directly funded from Esparto FPD through non-assessment sources including property taxes. For purposes of this Report, EMS costs over and above those necessary for fire suppression have been treated as general benefits, and it is conceded that these general benefits may exist at the same percentage for the proposed Services as with the existing baseline services. Therefore, it can be concluded that Esparto FPD's services are 4.0% general as a result of providing EMS services; The engineer is requiring a 4% adjustment for this component.

Summary of General Benefits

Using a sum of the measures of general benefit for the public at large and land outside the Assessment Area, we find that approximately 12% of the benefits conferred by the proposed Fire Protection and Emergency Response Assessment may be general in nature and must therefore be funded by sources other than the assessment.

General Benefit Calculation

7.0% (1. Outside the Assessment District - Adjacent parcels)
 + 0.0% (2. "Indirect and Derivative" Property within the Assessment District)
 + 1.0% (3. Public at Large)
 = 8.0% (Subtotal of General Benefit)

 + 4.0% (Emergency Medical Adjustment)

 =**12.0%** (Total of General Benefits)

The Assessment District's total budget for 2023-24 is \$953,610. Of this total assessment budget amount, the District will contribute at least \$526,793 which is more than 55% of the total budget from sources other than this proposed assessment including dedicated property taxes and the existing benefit assessment. This contribution constitutes significantly more than the 12% general benefits estimated by the Assessment Engineer, which must be paid for by non-assessment sources.

Zones of Benefit

The Assessment District has been narrowly drawn. The assessments will fund improved fire protection services relatively uniformly throughout the Assessment District. Properties of similar type will receive essentially equivalent types of special benefit with reasonable, parcel-by-parcel adjustments for fire hazard zone and proximity to fire stations (as explained later in the Method of Assessment section), and no broad, widespread Zones of Benefit are needed. Instead, each parcel is subject to geographic factors, acting as effective individual mini-zones.

The Assessment Area is extremely rural, and includes a patchwork of areas of moderate fire risk. Further, travel by roadway throughout the Assessment Area is very limited, and travel times from stations to specific parcels vary greatly. Accordingly, in lieu of traditional Zones of Benefits, the specific benefit of each parcel is individually calculated and adjusted for both fire risk zone and response travel time.

Assessment Apportionment

The Assessment Engineer determined that the appropriate method of assessment should be based on the type of property, the relative risk of fire by type of property, the relative fire hazard zone factor, the relative travel time factor, the relative size of the property, and the relative damage value (replacement cost) of fires by property type. This method is further described below.

Method of Assessment

The next step in apportioning assessments is to determine the relative special benefit for each property. This process involves determining the relative benefit received by each property in relation to a "benchmark" property, a single family detached dwelling on one parcel (one "Single Family Equivalent Benefit Unit" or "SFE").

This SFE methodology is commonly used to distribute assessments in proportion to estimated special benefits and is generally recognized as providing the basis for a fair and appropriate distribution of assessments. In this Report, all properties are assigned an SFE value, which is each property's relative benefit in relation to the benefit received by a single family home on one parcel.

The relative benefit to properties from fire related services is:

Equation 1 – Relative Special Benefit to Properties

Special Benefit =

$$\Sigma(\text{Fire Risk Factors}) * \Sigma(\text{Structure Replacement Factors}) * \Sigma(\text{Location/Topography Factors})$$

Simply put, the special benefit conferred to property is the product of the fire risk, the structure replacement costs and the location and topographic factors.

Typically, the development of the rate methodology for fire assessments is based upon fire risk and structure value. However, in this case, due to the particular nature of Esparto FPD fire hazards and terrain, two additional factors (Fire Hazard Zone and Proximity (Travel Time)) were added in support of a uniquely rigorous and detailed, parcel-by-parcel development of rate and assessment.

For example, by this formula, a hypothetical parcel used for a high fire risk operation (i.e., a fireworks factory), with high value structures, in a high fire hazard zone and very close to a fire station, receives a high amount of special benefit. Conversely, a vacant lot not in a high fire hazard area and a long way from a fire station would receive far less special benefit. It follows that the special benefit, and accordingly, the assessment amount, should be calculated and assigned consistent with this logic.

Overview of Approach

Each parcel is evaluated and the special benefit is calculated using 4 attribute criteria:

Risk and Replacement Factors:

- | | |
|---------------------------------|---------------|
| 1.) Fire Risk | (see Table 5) |
| 2.) Structure Replacement Value | (see Table 6) |

These factors are summarized in Table 7

Location and Topography Adjustments:

- | | |
|---|---------------|
| 3.) Location and Topography - Hazard Zone | (see Table 8) |
| 4.) Location and Topography - Proximity (Travel Time) | (see Table 9) |

Overview of Normalization in Adjustments in Multi-Attribute Analysis

One of the greatest engineering challenges in modeling and calculating special benefit on a specific parcel is the need to balance the effect of various attributes in a multi-attribute analysis. In this case, the special benefit method of apportionment is based upon four different attributes and each must be “weighted” to affect the overall special benefit calculation in a reasonable way, commensurate with their effect on the overall special benefit. The general approach taken is to adjust each attribute value towards a reasonable proportion of 1, such that it is consistent with the base unit of 1 Single Family Equivalent. See the “Area Adjustment Factor” used in Table 6 and the Impact Factor used in Tables 8 and 9.

1.) Fire Risk Factors

This fire risk is based upon the specific parcel type and use, including use of structure (e.g., used for cooking), type of structure (centralized heating), etc.

In 2021, the National Fire Protection Association (“NFPA”), one of the preeminent authorities on fire protection in the United States, published the Structure Fires by Occupancy 2015-2019 Annual Averages Report. This report comprehensively tabulates the number of fires for each classification of property type within the United States from 2015-2019, and serves as a reasonable and rational basis to determine fire risk.

The percent of fires for each property is then divided by the total number of that property type to determine un-normalized fire risk factors. Finally, the risk factors are normalized based upon a factor of 1.00 for a single family property. Table 5 below tabulates the Fire Risk Factors for each property type.

Table 5 – Normalized Fire Risk Factors

Property Type	Percentage of Study Units(a)	Percentage of Fires(b)	Risk Factor(b/a)	Normalized Risk Factor
Single Family	68.4%	52.5%	0.7674	1.0000
Multi-Family	13.1%	23.9%	1.8294	2.3839
Commercial/Industrial	3.4%	14.9%	4.3716	5.6967
Office	0.6%	0.7%	1.2228	1.5934
Storage	0.5%	4.9%	10.6702	13.9045
Parking Lot ⁽¹⁾	NA	NA	0.0000	0.2151
Vacant	11.7%	1.9%	0.1651	0.2151
Agriculture	1.7%	1.2%	0.6983	0.9099
Range Land & Open Space	0.8%	0.1%	0.0837	0.1090

Structure Fires by Occupancy 2015-2019 Annual Averages, NFPA, and an analysis of the percentage of properties by property type in the State of California by SCI

(1) This study did not provide sufficient analysis to develop risk factors for parking lots, so the vacant property type is used as a proxy.

The effect of installed fire sprinklers on the special benefit received from the proposed services must be tempered by the fact that many factors including fire type, weather, roofing material, building materials response time, defensible space, use of working smoke detectors, type of windows, maintenance of sprinkler system, etc. likely more significantly affect fire protection. These factors are incorporated into our analysis. Sprinklers have been required for commercial parcels for many years, so that element is already incorporated into our risk analysis. However, more recently, sprinklers for new and renovated residential structures have become required. Special cases will be considered as part of the standard appeals process described later in this Report.

2.) Structure Replacement Value Factors

The relative value of different property types was evaluated within the District to determine the Structure Replacement Value Factor according to the following formula:

Equation 2 – Structure Replacement Value Factors

Structure Replacement Value =

Normalized: [((Structure Weighting Factor * (Average Improved Value)) +

((Land Weighting Factor * (Average Land Value))] * Area Adjustment Factor

Where:

- “Structure Weighting Factor” = 10 to “weight” relative importance of structure over land.
- “Average Improved Value” is average of value of all structures and improvements.
- “Normalized:[]” process is required to adjust the Structure Replacement Value factor as compared to a Single Family property type. The calculated structure replacement value for a specific property type is divided by the structure replacement value for a single family property type – and then it is multiplied by the area adjustment factor.
- Area Adjustment Factor adjusts for various average parcel size as compared to an average single family residence and only affects multi-family parcels for the service area. Hence, the adjustment factor is 0.42 for multi-family parcels and 1.0 (e.g. no effect) for all other property use types.
- “Land Weighting Factor” = 1
- “Average Land Value” is average of value of all land per property type

Table 6 below is a tabulation of the structure replacement values for each property type as defined by Equation 2, on the previous page.

Table 6 – Structure Replacement Factors

Property Type	Average Improvement Values (a)	Average Land Values (b)	Adjusted, Weighted Normalized Replacement Value Factor	Unit
Single Family	\$285,614	\$160,715.91	1.0000	each
Multi-Family	\$120,073	\$48,350.58	0.1741	res unit
Commercial/Industrial	\$379,539	\$142,183.00	1.3052	acre
Office	\$351,315	\$197,932.00	1.2301	acre
Storage	\$110,620	\$78,883.00	0.3928	acre
Parking Lot	\$248,376	\$84,928.00	0.8514	acre
Vacant	\$32,533	\$124,063.00	0.6223	each
Agriculture	\$7,380	\$10,377.00	0.0279	acre
Range Land & Open Space	\$3,919	\$1,889.00	0.0136	acre

- (a) and (b) values derived from an analysis of the 2022 Yolo County Assessor records.

Summary of Risk and Replacement Factors

Per Equation 1, the relative special benefit for each property type (the “SFE” or “Single Family Equivalent” Benefit Units) is determined as the product of the normalized Fire Risk Factors and the normalized Structure Replacement Value Factors. Table 7, below, summarizes the benefit for each property type.

Note that to derive an actual Assessment amount, each of these values needs to be then multiplied by the parcel specific Fire Hazard Zone Risk Factors and Proximity (Travel Time) Risk Factors in Tables 8 and 9, below.

Table 7 – Benefit Summary per Property Type

Property Type	Fire Risk Factors	Replacement Cost Factors	SFE Factors	Unit
Single Family	1.0000	1.0000	1.0000	each
Multi-Family	2.3839	0.1741	0.4149	res unit
Commercial/Industrial	5.6967	1.3052	7.4352	acre
Office	1.5934	1.2301	1.9601	acre
Storage	13.9045	0.3928	5.4620	acre
Parking Lot	0.2151	0.8514	0.1831	each
Vacant	0.2151	0.6223	0.1339	each
Agriculture	0.9099	0.0279	0.0254	acre
Range Land & Open Space	0.1090	0.0136	0.0015	acre

Residential Properties

All improved residential properties with a single residential dwelling unit are assigned one Single Family Equivalent or 1.0 SFE. Residential properties on parcels that are larger than one acre receive additional benefit and are assigned additional SFEs on an “Agricultural/Rangeland” basis. Detached or attached houses, zero lot-line houses and town homes are included in this category.

Properties with more than one residential unit are designated as multi-family residential properties. These properties benefit from the Services in proportion to the number of dwelling units that occupy each property. The relative benefit for multi-family properties was determined per Equation 1 to be 0.4149 SFEs per residential unit. This rate applies to condominiums as well.

Commercial/Industrial & Office Properties

Commercial and industrial properties are assigned benefit units per acre, since there is a relationship between parcel size, structure size and relative benefits. The relative benefit for commercial and industrial properties was determined per Equation 1 to be 7.4352 SFEs per acre. The relative benefit for office properties was determined per Equation 1 to be 1.9601 SFEs per acre.

Vacant and Undeveloped Properties

The relative benefit for vacant properties was determined per Equation 1 to be 0.1339 SFEs per parcel. The relative benefit for stand-alone parking lots was determined per Equation 1 to be 0.1831 SFEs per parcel.

Rangeland & Open Space Properties

The relative benefit for range land & open space properties was determined per Equation 1 to be 0.0015 SFEs per acre. (This group includes TPZ parcels.)

Agricultural Properties

The relative benefit for agricultural properties requires additional analysis, as required by Government Code 50078 *et seq* and the unique aspects of agricultural properties within the boundaries. This analysis considered how agricultural operations may mitigate risk, onsite or proximate water availability, response time, capability of the fire suppression service, and any other factors which reflect the benefit to the land resulting from the fire suppression service provided. Agricultural properties have been analyzed for fire risk and replacement cost per Equation 1. The relative benefit for agricultural properties was determined per Equation 1 to be 0.0254 SFEs per acre.

Other Properties

Properties that do not fit within the major categories described above have been individually reviewed and the special benefit has been individually calculated. These properties are primarily mixed-use properties with the relative special benefit calculated from the relative proportion of each of the underlying property uses.

Article XIID, Section 4 of the California Constitution states that publicly owned properties shall not be exempt from assessment unless there is clear and convincing evidence that those properties receive no special benefit.

All public properties that are specially benefited are assessed. Publicly owned property that is used for purposes similar to private residential, commercial, industrial or institutional uses is benefited and assessed at the same rate as such privately owned property.

Miscellaneous, small and other parcels such as roads, and right-of-way parcels typically do not have significant risk of fire damage. Moreover, for common area parcels, the fire benefits are assigned to the other improved parcels in the project that share common ownership of the common area. These miscellaneous parcels receive minimal benefit from the Services and are assessed an SFE benefit factor of 0.

3.) Fire Hazard Zone Risk Factors

CAL FIRE works with local agencies to study various fire risk factors throughout rural California including terrain, vegetation, fuel load, wind, weather, etc. and designates specific geographic areas according to fire risk. Within the Assessment Area certain areas are designated as Very High, High, or Moderate as well as areas that do not fall into any of these zones (“None”). Accordingly, parcels receive higher special benefit from the fire protection and emergency response services if they are higher risk zones.

Refer to Appendix A for a diagram of the Fire Hazard Areas in Esparto FPD.

Table 8 shows the normalized Fire Hazard Risk Factor for each fire risk zone.

Table 8 – Fire Hazard Zone Risk Factors

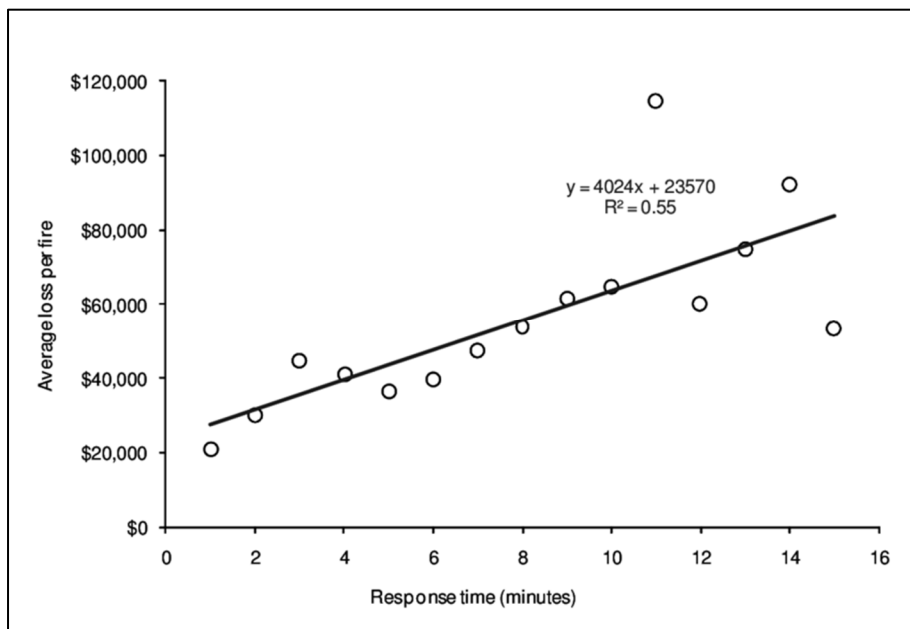
Fire Hazard Zone		Normalized Fire Hazard Zone	
Zone	Score	Impact Effect	Factor
Very High	2	120	1.20
High	1.2	112	1.12
Moderate	1	110	1.10
None	0	100	1

The Score is relative special benefit conferred for each risk zone. The Impact Factor is the relative weight for this risk factor on the overall special benefit calculation, and is the Score multiplied by 10 and added to the base value of 100.

4.) Proximity (Travel Time) Risk Factors

Timely response is a critical factor in responding to emergency calls to ensure the safety of people and protection of property. Numerous studies have confirmed this well-established understanding and the results of one such study is included with this Report. The graph below shows the linear function relationship ranking between response time and loss in dollars. Accordingly, parcels that are closer to a fire station require a shorter travel time for response, and receive a higher level of special benefit than parcels with a longer travel time.

Travel Time versus Property Loss



Source: Neil Challands “The Relationships Between Fire Service Response Time and Fire Outcomes,” Fire Technology, July 2010.

Travel time from the fire station to each parcel was calculated and analyzed using Geographical Information Systems.

Refer to Appendix B for a diagram of the Response Areas Travel Time in Esparto FPD.

Table 9 below shows the relative normalized value of travel time

Table 9 – Travel Time Premium Factor

Travel Time	Score (\$)	Impact Effect	Normalized Travel Time Factor
<5	43,690	138	1.15
5 to 10	63,810	126	1.05
11-15	83,930	120	1.00
16-20	104,050	116	0.97
20+	124,170	114	0.95

Assessments Calculation

Each parcel's assessment is calculated by multiplying the assessment rate by the SFE benefit factor (Table 7), fire hazard zone factor (Table 8) and travel time premium factor (Table 9):

Example Calculations

Case #1: Single Family Residence in High Very Hazard Zone with a 5-10 minute Travel Time

Assessment Rate = Annual Base SFE Rate * 1.000 (from table 7) * 1.20 (from table 8)

* 1.05 (from table 9) = 1.26 * Annual Base SFE Rate

Case #2: Single Family Residence in Moderate Hazard Zone with an 20+ minute Travel Time

Assessment Rate = Annual Base SFE Rate * 1.000 (from table 7) * 1.10 (from table 8)

* 0.95 (from table 9) = 1.045 * Annual Base SFE Rate

Case #3: Commercial Property on 2 Acres in High Very Hazard Zone with a 5–10 minute Travel Time

Assessment Rate = Annual Base SFE Rate * 7.4352 (from table 7) * 2 acres * 1.20 (from table 8) * 1.05 (from table 9) = 18.7367 * Annual Base SFE Rate

Case #4: Vacant Lot in a Moderate Hazard Zone with a <5 minute Travel Time

Assessment Rate = Annual Base SFE Rate * .1339 (from table 7) * 1.10 (from table 8)

* 1.15 (from table 9) = 0.1694 * Annual Base SFE Rate

Annual Base SFE Rate = \$141.35 for 2023-24

Appeals of Assessments Levied to Property

Any property owner who feels that the assessment levied on the subject property is in error as a result of incorrect information being used to apply the foregoing method of assessment or for any other reason, may file a written appeal with the Esparto FPD Fire Chief, or his or her designee. Any such appeal is limited to correction of an assessment during the then current fiscal year. Upon the filing of any such appeal, the Chief, or his or her designee, will promptly review the appeal and any information provided by the property owner. If the Chief, or his or her designee, finds that the assessment should be modified, the appropriate changes shall be made to the assessment roll. If any such changes are approved after the assessment roll has been filed with the County for collection, the Chief, or his or her designee, is authorized to refund to the property owner the amount of any approved reduction. Any dispute over the decision of the Chief, or his or her designee, shall be referred to the Esparto FPD Board of Directors; the decision of the Board shall be final.

Additional Background on Relative Benefit

When property owners decide how to cast their ballot for a proposed assessment, each property owner should weigh the perceived value of the Services proposed to them and their property against the proposed cost of the assessment to their property. If property owners of a certain type of property are either opposed or in support of the assessment in much greater percentages than owners of other property types, this is an indication that, as a group, these property owners perceive that the proposed assessment has relatively higher or lower “utility” or value to their property relative to owners of other property types. One can also infer from these hypothetical ballot results, that the apportionment of benefit (and assessments) was too high or too low for that property type. In other words, property owners, by their balloting, ultimately indicate if they perceive the special benefits to their property to exceed the cost of the assessment, and, as a group, whether the determined level of benefit and proposed assessment (the benefit apportionment made by the Assessment Engineer) is consistent with the level of benefits perceived by the owners of their type of property relative to the owners of other types of property.

Criteria and Policies

This sub-section describes the criteria that shall govern the expenditure of assessment funds and ensures equal levels of benefit for properties of similar type. The criteria established in this Report cannot be substantially modified; however, the Board may adopt additional criteria to further clarify certain criteria or policies established in this Report, or to establish additional criteria or policies that do not conflict with this Report.

Duration of Assessment

It is proposed that the Assessment be levied for fiscal year 2023-24 and continued every year thereafter, so long as the risk of fire on property in the Assessment District remains in existence and Esparto FPD Fire requires funding from the Assessment for improved fire protection and suppression services. As noted previously, if the Assessment and the duration of the Assessment are approved by property owners in an assessment ballot proceeding, the Assessment can be imposed and continued annually after the Board approves an annually updated budget and rate for the Assessment. In addition, the Board must hold an annual public hearing to continue the Assessment.

Assessment

WHEREAS, the Board of Directors of the Esparto Fire Protection District formed the Fire Protection and Emergency Response Services Assessment District and is proceeding with the proposed levy of assessments under California Government Code sections 50078 et seq. (the “Code”) and Article XIID of the California Constitution (the “Article”);

WHEREAS, the undersigned Engineer of Work has prepared and filed a report presenting an estimate of costs, a diagram for the Assessment District and an allocation of the estimated costs of the Services upon all assessable parcels within the Assessment District;

NOW, THEREFORE, the undersigned hereby recommends the following assessment to cover the estimated cost of said Services, including incidental costs.

The amount to be paid for said Services and the expense incidental thereto, to be paid by the Assessment District for the fiscal year 2023-24 is generally as follows:

Table 10– Summary Cost Estimate

FISCAL YEAR 2023-24 BUDGET			
	Total for Servicing	\$953,610	
	Contributions from Other Sources	(\$526,793)	
	Total Allowance for Collections	\$4,268	
	Total Fire Suppression & Protection Services Budget	\$431,085	

An Assessment Diagram is hereto attached and made a part hereof showing the exterior boundaries of said Assessment District. The distinctive number of each parcel or lot of land in said Assessment District is its Assessor Parcel Number appearing on the Assessment Roll.

I do hereby assess and apportion said net amount of the cost and expenses of said Services, including the costs and expenses incident thereto, upon the parcels and lots of land within said Assessment District, in accordance with the special benefits to be received by each parcel or lot, from the Services, and more particularly set forth in the Cost Estimate and Method of Assessment hereto attached and by reference made a part hereof.

The assessment is subject to an annual adjustment tied to the Consumer Price Index-U for San Francisco-Oakland-Hayward as of December of each succeeding year (the “CPI”), with a maximum annual adjustment not to exceed 5%.

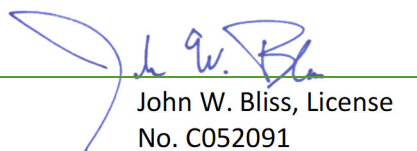
Each parcel or lot of land is described in the Assessment Roll by reference to its parcel number as shown on the Assessor's Maps of Yolo County for the fiscal year 2023-24. For a more particular description of said property, reference is hereby made to the deeds and maps on file and of record in the office of the County Recorder of Yolo County.

I hereby place opposite the Assessor Parcel Number for each parcel or lot within the Assessment Roll, the amount of the assessment for the fiscal year 2023-24 for each parcel or lot of land within the said Assessment District.

Dated: May 2, 2023

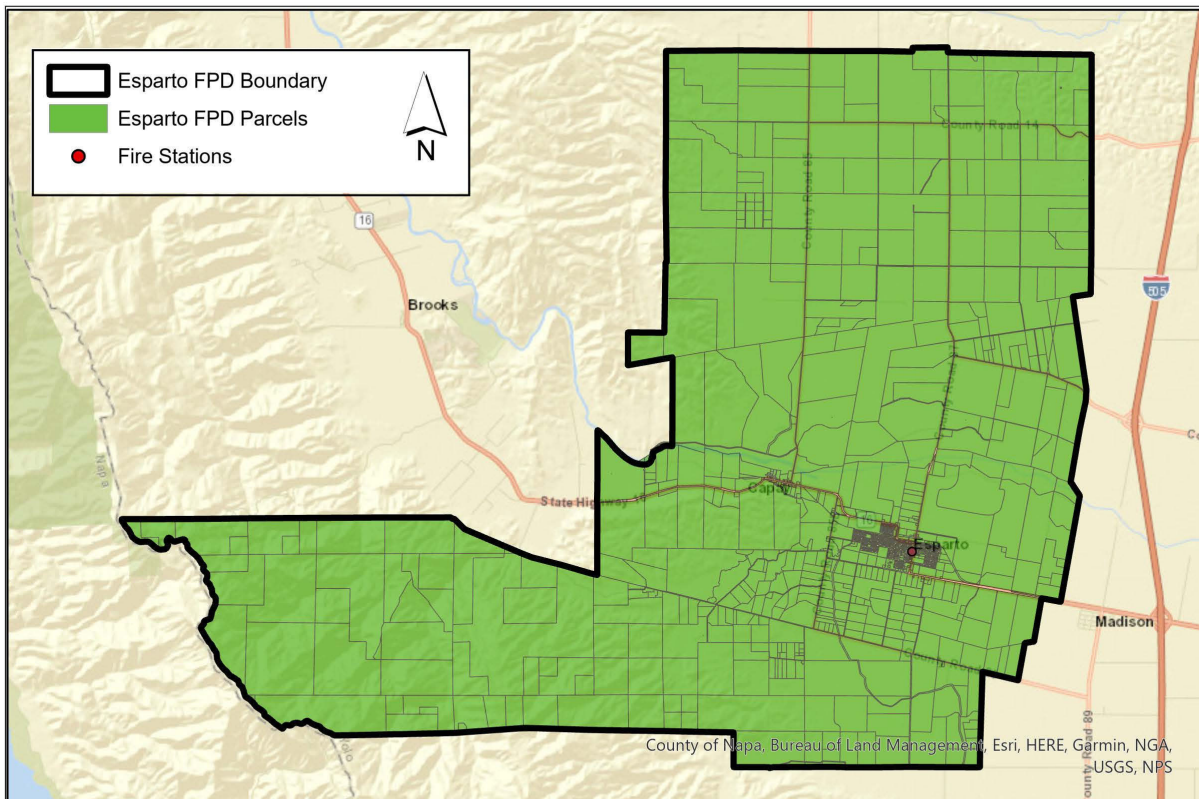
Engineer of Work



By  _____
John W. Bliss, License
No. C052091

Assessment Diagram

The Assessment District includes all properties within the boundaries of the Fire Protection and Emergency Response Services District. The boundaries of the Assessment District are displayed on the following Assessment Diagram. The lines and dimensions of each lot or parcel within the Assessment District are those lines and dimensions as shown on the maps of the Assessor of Yolo County, and are incorporated herein by reference, and made a part of this Diagram and this Report.



FILED IN THE OFFICE OF THE FIRE CHIEF OF THE
 ESPARTO FIRE PROTECTION DISTRICT,
 COUNTY OF YOLO,
 CALIFORNIA, THIS _____ DAY OF _____, 2023.

 CLERK OF THE BOARD

RECORDED IN THE OFFICE OF THE FIRE CHIEF OF
 ESPARTO FIRE PROTECTION DISTRICT,
 COUNTY OF YOLO, CALIFORNIA
 THIS _____ DAY OF _____, 2023.

 CLERK OF THE BOARD

Note:
 REFERENCE IS HEREBY MADE TO THE MAPS AND DEEDS OF
 RECORD IN THE OFFICE OF THE ASSESSOR OF THE COUNTY
 OF YOLO FOR A DETAILED DESCRIPTION OF
 THE LINES AND DIMENSIONS OF ANY PARCEL SHOWN
 HEREIN. THOSE MAPS SHALL GOVERN FOR ALL DETAILS
 CONCERNING THE LINES AND DIMENSIONS OF SUCH
 PARCELS. EACH PARCEL IS IDENTIFIED IN SAID MAPS BY
 ITS DISTINCTIVE ASSESSOR'S PARCEL NUMBER.

AN ASSESSMENT WAS CONFIRMED AND LEVIED BY THE
 BOARD OF COMMISSIONERS OF ESPARTO FIRE
 PROTECTION DISTRICT, COUNTY OF YOLO,
 ON THE LOTS, PIECES AND PARCELS OF LAND ON THIS
 ASSESSMENT DIAGRAM ON THE _____ DAY
 OF _____, 2023 FOR THE
 FISCAL YEAR 2023-24 AND SAID ASSESSMENT DIAGRAM
 AND THE ASSESSMENT ROLL FOR SAID FISCAL YEAR WERE
 FILED IN THE OFFICE OF THE COUNTY AUDITOR OF THE
 COUNTY OF YOLO ON THE _____ DAY OF
 _____, 2023. REFERENCE IS HEREBY MADE TO
 SAID RECORDED ASSESSMENT ROLL FOR THE EXACT
 AMOUNT OF EACH ASSESSMENT LEVIED AGAINST EACH
 PARCEL OF LAND.

 CLERK OF THE BOARD

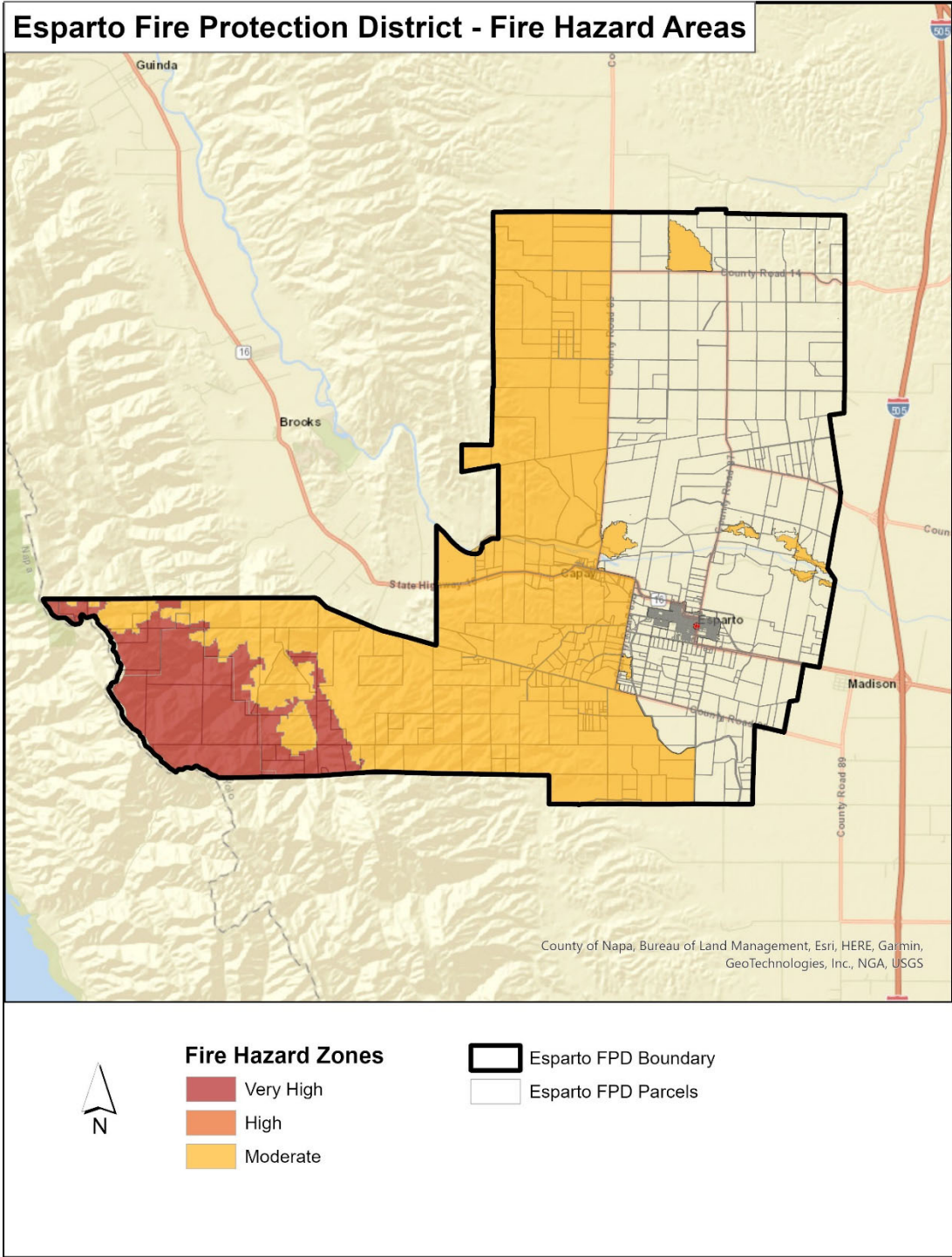
FILED THIS _____ DAY OF _____, 2023 AT THE
 HOUR OF _____ O'CLOCK _____ M. IN THE OFFICE OF THE
 COUNTY TAX COLLECTOR OF THE COUNTY OF
 YOLO, STATE OF CALIFORNIA, AT THE REQUEST
 OF THE BOARD OF ESPARTO FIRE PROTECTION DISTRICT.

 COUNTY TAX COLLECTOR, COUNTY OF YOLO

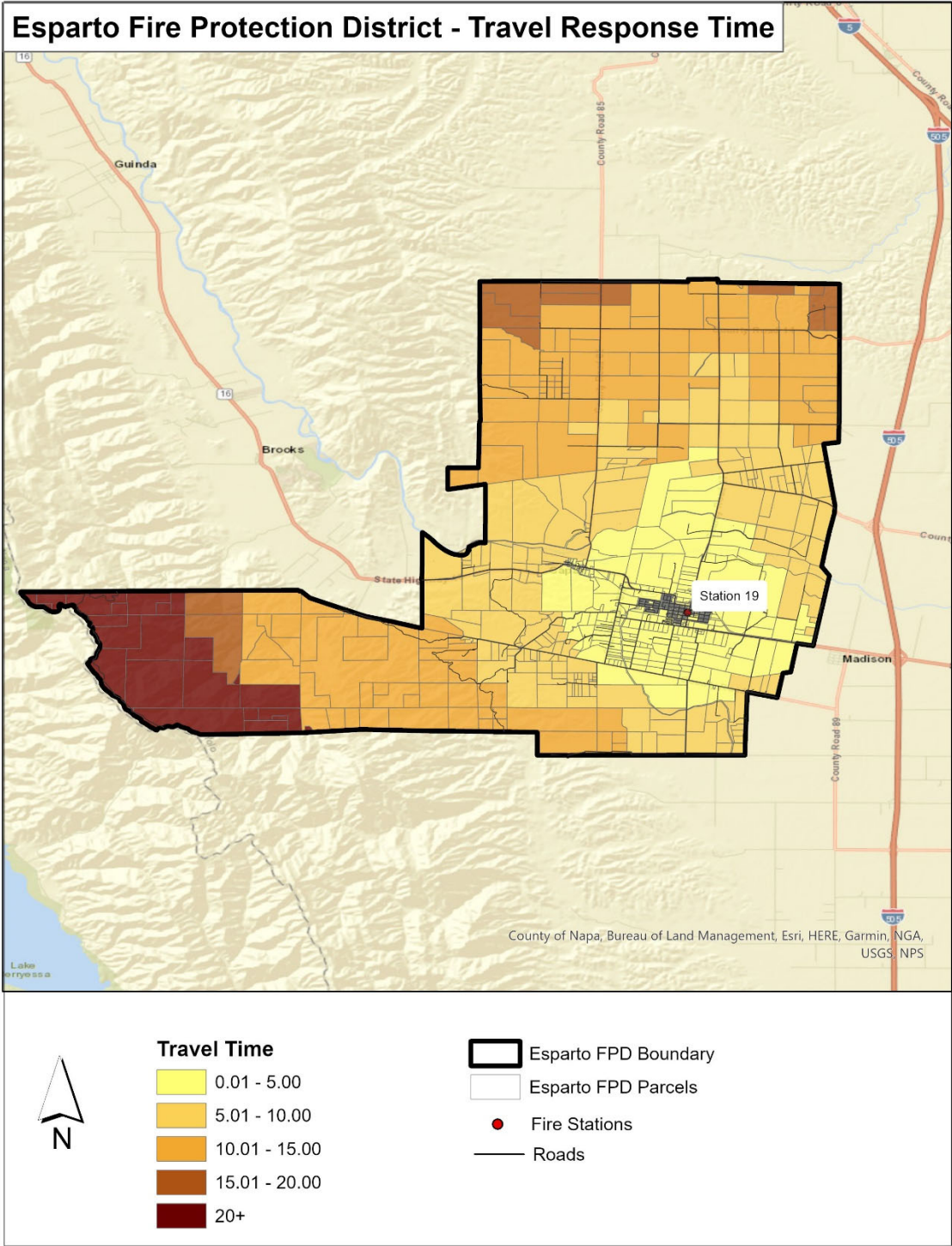
SCI Consulting Group
 4745 Mangels Blvd
 Fairfield, CA 94534
 707-430-4300

Esparto Fire Protection District Fire Protection and Emergency Services Assessment Diagram

Appendix A – Fire Hazard Areas Diagram



Appendix B – Response Areas Travel Time Diagram



Appendix C – Assessment Roll, Fiscal Year 2023-24

The Assessment Roll is made part of this report and is available for public inspection during normal office hours. Each lot or parcel listed on the Assessment Roll is shown and illustrated on the latest County Assessor records and these records are, by reference, made part of this Report. These records shall govern for all details concerning the description of the lots of parcels.

**Esparto Fire Protection District
Fire Protection and Emergency Response Services Assessment
Assessment Roll 2023-2024**

Assessment Number & Assessor			ESFE	Assessment
Parcel Number	Owner Name(s)	Site Address	Units	
047030008000	YOCHA DEHE WINTUN NATION		0.5247	74.17
047030009000	WELLS MARY LOU		0.5587	78.97
047030013000	WELLS 2001 TRUST		0.1368	19.34
047030014000	U S A		0.0684	9.67
047030015000	FITZGERALD JANE FAM REV TRUST-EXEMPTION		0.3420	48.34
047040006000	WIRTH RB FAM TRUST ETAL		0.0684	9.67
047040007000	WIRTH RB FAM TRUST ETAL		0.4446	62.84
047040013000	FOSTER 2001 REV LIVING TRUST		0.1573	22.23
047040014000	U S A		0.0855	12.09
047050001000	YOCHA DEHE WINTUN NATION		0.2880	40.71
047050002000	YOCHA DEHE WINTUN NATION	19775 CR 81	0.3006	42.49
047050004000	MAST TRUST		0.5472	77.35
047050005000	U S A		0.8892	125.69
047050006000	U S A		1.0944	154.69
047050007000	U S A		0.7011	99.10
047050008000	WIRTH RB FAM TRUST ETAL		0.5558	78.56
047050009000	WIRTH RB FAM TRUST ETAL		0.2035	28.76
047050010000	U S A		0.8892	125.69
047050011000	U S A		0.2736	38.67
047050012000	WELLS 2001 TRUST		0.9952	140.67
047050013000	WELLS 2001 TRUST		0.2862	40.45
047050014000	WIRTH RB FAM TRUST ETAL		0.1526	21.57
047050015000	CLINE FAM TRUST		0.5472	77.35
047050016000	CLINE FAM TRUST		0.1526	21.57
047050017000	CLINE FAM TRUST		0.2970	41.98
047060007000	TUCKER DOUGLAS & AYLY	22995 CR 23	2.5317	357.86
047060008000	KUPPENBENDER FAM TRUST ETAL		0.2640	37.32
047060013000	MORIS FAM TRUST		0.2430	34.35
047060015000	CAMPOS CODY ADAM	22755 CR 23	1.2723	179.84
047060019000	VAN SCOTT REV TRUST	22322 CR 23	1.3096	185.11
047060020000	CAMPOS DANIEL A & CAITLIN	22553 CR 23	1.3794	194.98
047060022000	YOCHA DEHE WINTUN NATION		0.3402	48.09
047060034000	YOCHA DEHE WINTUN NATION		0.1320	18.66
047060035000	YOCHA DEHE WINTUN NATION		0.0660	9.33
047060036000	YOCHA DEHE WINTUN NATION		0.2640	37.32
047060037000	YOCHA DEHE WINTUN NATION		0.0660	9.33
047060038000	YOCHA DEHE WINTUN NATION		0.2640	37.32
047060039000	YOCHA DEHE WINTUN NATION		0.2640	37.32
047060040000	YOCHA DEHE WINTUN NATION		0.2640	37.32
047060042000	YOCHA DEHE WINTUN NATION		0.2162	30.56
047060043000	YOCHA DEHE WINTUN NATION		0.3894	55.04
047060044000	YOCHA DEHE WINTUN NATION		2.4930	352.39
047060047000	HYC INVEST		8.7655	1,239.00
047060050000	SANFORD MICHAEL V	22945 CR 23	10.9857	1,552.83
047060051000	MILLS AARON URIAH	22871 CR 23	1.3604	192.29
047070013000	YOCHA DEHE WINTUN NATION		0.1440	20.35
047070014000	YOCHA DEHE WINTUN NATION		0.1440	20.35
047070015000	YOCHA DEHE WINTUN NATION		0.2640	37.32
047070018000	YOCHA DEHE WINTUN NATION		0.2640	37.32
047070023000	YOCHA DEHE WINTUN NATION		0.5280	74.63
047070032000	DUTTON JOE ETAL		0.1526	21.57
047070033000	TAMAYO MARCO A & MARTHA E		0.2628	37.15
047080001000	U S A	1 BERRYESSA RD	0.9884	139.71
047080002000	RAY STEVEN ETAL		0.0701	9.91
047080004000	RAY STEVEN ETAL		0.2052	29.01
047080012000	MADRIZ AMADOR PATINO		0.2428	34.32
047080013000	RAY BOBBY DALE ETAL		0.0359	5.07

**Esparto Fire Protection District
Fire Protection and Emergency Response Services Assessment
Assessment Roll 2023-2024**

Assessment Number & Assessor			ESFE	Assessment
Parcel Number	Owner Name(s)	Site Address	Units	
047140004000	ALA DOBLE LLC	25794 CR 25	4.6276	654.11
047140005000	CARTER REV TRUST	25520 CR 25	3.3846	478.41
047140006000	RONCHETTO FAM IRREV TRUST	25260 CR 25	2.1897	309.51
047140007000	RONCHETTO FAM IRREV TRUST	25416 CR 25	2.9823	421.55
047140008000	ROBLES 2007 REV TRUST	25561 CR 25	1.5191	214.72
047140023000	FERRO INVESTMENTS LP		0.7854	111.02
047140026000	FERRO INVESTMENTS LP		0.5280	74.63
047140027000	FERRO INVESTMENTS LP		0.1287	18.19
047140039000	YOCHA DEHE WINTUN NATION		0.0660	9.33
047140040000	YOCHA DEHE WINTUN NATION		0.0660	9.33
047140041000	YOCHA DEHE WINTUN NATION		0.0660	9.33
047140042000	YOCHA DEHE WINTUN NATION		0.0660	9.33
047140047000	BOUNDARY BEND ASSETS INC		3.9675	560.81
047140048000	DAROSA ANTONIO M FAM REV LIV TRUST		4.1952	592.99
048100016000	YOCHA DEHE WINTUN NATION		0.1832	25.90
048100017000	SMITH DONNA MARIE		0.1473	20.82
048110005000	HERREN HANS R & BARBARA G	23057 HWY 16	1.4190	200.58
048110006000	M & P FAM LTD PARTNERSHIP		0.3881	54.86
048110007000	VANNUCCI 2004 TRUST ETAL		0.1403	19.83
048110017000	AUKLET 1031 LLC	22898 CR 23	0.1386	19.59
048110018000	ROGERS DALE E	22644 CR 23	1.2964	183.25
048110029000	VANNUCCI 2004 TRUST ETAL	22455 HWY 16	1.7129	242.12
048110030000	M & P FAMILY LP		0.0347	4.90
048110031000	M & P FAMILY LP		0.3448	48.74
048120018000	TRIPLE CREEK FARM LLC		8.9478	1,264.77
048130003000	GREIN CAROL ANNE	15881 CR 82B	1.4190	200.58
048130004000	TRASK MATHEW M	16001 CR 82B	1.3017	184.00
048130006000	CAPAY INCORPORATED	23204 HWY 16	1.8004	254.49
048130007000	CAPAY INC		0.0277	3.92
048130017000	GREIN CAROL ANNE ETAL	15815 CR 82B	1.9471	275.22
048130024000	CHE BROTHERS LLC	23800 HWY 16	9.1744	1,296.80
048130026000	MARVEL PAMELA J	23946 HWY 16	1.7417	246.19
048130028000	CAPAY INC	23550 HWY 16	4.7048	665.02
048130029000	MARLOW FAM TRUST	23200 HWY 16	2.5632	362.31
048130030000	JONES FAM TRUST ETAL	16017 CR 82B	2.5632	362.31
048130033000	CAPAY INC		1.7896	252.96
048130034000	CAPAY INC	23820 HWY 16	2.7392	387.19
048140003000	CAPAY 1314 LLC		1.9060	269.41
048140004000	CAPAY 1314 LLC		7.4067	1,046.94
048140008000	TOMPKINS ROBERT J & JOAN C	15130 CR 85	1.3017	184.00
048140010000	MICROP LIMITED A CORP		7.7450	1,094.76
048140011000	MICROP LIMITED A CORP	15050 CR 85	2.9739	420.36
048140012000	STORY REV TRUST		2.0003	282.74
048140013000	STORY REV TRUST		2.0003	282.74
048140016000	YCFWCD		0.0000	0.00
048140019000	MICROP LIMITED A CORP		9.5745	1,353.36
048140024000			0.0000	0.00
048140028000	SMITH TRUST	15224 CR 85/15236 & 15370	19.4135	2,744.10
048140037000	MICROP LIMITED		6.0434	854.23
048140040000	GRANITE CONSTRUCTION CO	15491 CR 85	9.8382	1,390.63
048140041000	YOLO COUNTY OF	15603 CR 85	0.0778	11.00
048150005000	EL ROBLAR LLC		0.2096	29.63
048150006000	EL ROBLAR LLC		0.6254	88.40
048150007000	WILLIAMS GARY L TR		0.7161	101.22
048160001000	FOUR D FARMS LLC		2.3176	327.59
048160002000	WILLIAMS GARY L TR	13480 CR 85	7.7073	1,089.43
048160003000	NKC ALMOND FARMING LLC		4.2139	595.63

**Esparto Fire Protection District
Fire Protection and Emergency Response Services Assessment
Assessment Roll 2023-2024**

Assessment Number & Assessor			ESFE	Assessment
Parcel Number	Owner Name(s)	Site Address	Units	
048160008000	SCHAUPP REV TRUST		0.5588	78.99
048160009000	SCHAUPP REV TRUST		1.2268	173.41
048160010000	SCHAUPP REV TRUST		0.6134	86.70
048160017000	CARRION JOSEPH E & TAMMY L	13751 CR 85	1.9034	269.05
048160018000	NKC ALMOND FARMING LLC		4.0894	578.04
048160019000	LOWELL MATTHEW & DEBORAH		2.3934	338.31
048160021000	CHE BROTHERS LLC		5.0238	710.11
048170001000	YCFWCD	26011 CR 16	0.0000	0.00
048170002510	HUNGRY HOLLOW TRUST	26455 CR 16A	1.7272	244.14
048170002520	HIATT JAMES MELVIN	26455 CR 16A	2.7018	381.90
048170003000	PARDINI LIVING TRUST		4.2672	603.17
048170005000	JHR ROTTEVEEL FARMS LLC	13405 CR 87	5.2905	747.81
048170006000	SCHAUPP REV TRUST	13070 CR 88	5.2905	747.81
048170007000	JHR ROTTEVEEL FARMS LLC	27790 CR 17	4.8105	679.96
048170008000	LOPEZ HOWARD & BONNIE	27390 CR 17	1.6634	235.12
048170012000	LOPEZ HOWARD & BONNIE	13479 CR 87	2.7569	389.69
048170014000	KISTLE DANNY W & SANDRA J	13475 CR 87	1.7168	242.67
048170015000	HATANAKA TRUST		1.7602	248.80
048180004000	SUTTER HOME WINERY INC		0.8001	113.09
048180005000	SUTTER HOME WINERY INC		1.6002	226.19
048180009000	CORWIN BYPASS TRUST ETAL		3.3528	473.92
048180016000	SUTTER HOME WINERY INC		1.9304	272.86
048180017000	WINTERS DANNY R & SUSAN L	13605 CR 88	5.6372	796.82
048190001000	HL & BA LOPEZ TRUST & LOPEZ HOWARD L &	27495 CR 17	2.2334	315.69
048190002000	LOPEZ TRUST		0.7734	109.32
048190003000	LOPEZ TRUST		0.1406	19.87
048190004000	LOPEZ TRUST		0.1406	19.87
048190005000	LOPEZ TRUST		0.4001	56.55
048190006000	LOPEZ TRUST	27347 CR 17	1.6634	235.12
048190007000	LOPEZ TRUST		1.3335	188.49
048190008000	JOB FARMS LP		9.0411	1,277.96
048190009000	LOPEZ HOWARD L & BONNIE A	27777 CR 19	2.7569	389.69
048190010000	BARTH FAM 1993 REV TRUST ETAL		6.7742	957.53
048190011000	YCFWCD		0.0000	0.00
048190012000	HAYES JANET MAST TR	14624 GOTTLOB MAST ST	1.7168	242.67
048190013000	MAST FAM TRUST		3.2004	452.38
048190015000	YCFWCD		0.0000	0.00
048190016000	CACHE CREEK 243 LLC		3.8938	550.39
048200001000	CHUN YOUNG KIL & YOUNG CHUL	27853 CR 17	2.8369	401.00
048200002000	WILLIAMS ERIC E & ERIKA C	27890 CR 19	2.7668	391.09
048200003000	DIBBLE WILLIAM L	28000 CR 19	1.7968	253.98
048200004000	STEPHENS WILMA M REV TRUST ETAL	13990 CR 88A	1.8234	257.74
048200005000	HENDERSON WESLEY R ETAL		0.4801	67.86
048200006000	STEPHENS WILMA M REV TRUST ETAL		0.7734	109.32
048200007000	HENDERSON WESLEY R ETAL		1.5301	216.28
048200008000	HATANAKA TRUST		0.8001	113.09
048200009000	HATANAKA TRUST	28360 CR 19	0.7201	101.79
048200010000	SUTTER HOME WINERY INC		4.7206	667.26
048200011000	SUTTER HOME WINERY INC		0.7201	101.79
048200015000	DIBBLE WILLIAM L	27960 CR 19	1.0500	148.42
048200016000	HENDERSON WESLEY R ETAL		0.1406	19.87
048200017000	SUTTER HOME WINERY INC		0.1406	19.87
048210001000	TEICHERT LAND CO		2.6347	372.41
048210002000	YOLO COUNTY OF	27075 CR 87 & CR 19A	9.4055	1,329.47
048210003000	SYAR INDUSTRIES INC		0.2429	34.33
048210004000	SYAR JAMES M & DENTON L	27640 CR 19A	2.2932	324.14
048210005000	RAMIREZ ANGELICA MATA & FILEMON	27770 CR 19A	1.9034	269.05

**Esparto Fire Protection District
Fire Protection and Emergency Response Services Assessment
Assessment Roll 2023-2024**

Assessment Number & Assessor Parcel Number	Owner Name(s)	Site Address	ESFE Units	Assessment
048210006000	TEICHERT LAND CO	27940 CR 19A	17.5045	2,474.26
048210008000	CACHE CREEK 243 LLC		2.8750	406.38
048210009000		27300 CR 19A	0.0000	0.00
048210010000	MAST FAM TRUST	15416 GOTTLOB MAST ST	1.3433	189.88
048210011000	MAST FAM TRUST	15455 GOTTLOB MAST ST	1.2745	180.15
048220003000	BARTH FAM 1993 REV TRUST	14650 CR 87	14.2681	2,016.80
048220004000	YCFWCD		0.0000	0.00
048220013000	YOLO COUNTY OF		0.1540	21.77
048220015000	GRANITE CONSTRUCTION CO		0.1794	25.36
048220016000	GRANITE CONSTRUCTION CO	15560 CR 87	0.1794	25.36
048220017000	HUNGRY HOLLOW LLC		14.3129	2,023.13
048220018000	GRANITE CONSTRUCTION CO	26009 FULTON & FRANK LN	8.8265	1,247.63
048220022000	GRANITE CONSTRUCTION CO	26410 FULTON FRANK LN	8.3833	1,184.98
048220023000	SM FARMS LLC		4.9365	697.77
048220024000	AAA FARMERS INC		4.7028	664.74
048220025000	AAA FARMERS INC		2.7203	384.51
049100018000	PRYOR MIKE & TRACY	27830 CR 23	2.8201	398.62
049100019000	GNOSS MICHAEL J	27680 CR 23	2.1968	310.52
049100026000	M & L FRUIT CO INC	27954 CR 23	2.4368	344.44
049100027000	M & L FRUIT CO INC		0.1406	19.87
049100032000	WETLANDS LLC	28025 HWY 16	4.3523	615.20
049100035000	AWR LAND PARTNERSHIP LP ETAL		4.3231	611.07
049110002000	SAGARA FARMS INC	17437 CR 86A	8.5505	1,208.61
049110007000	FOSTER 2001 REV LIVING TRUST	17720 OAKDALE RANCH LN	9.7881	1,383.55
049110008000	DRIVER REMAINDER TRUST	17830 OAKDALE RANCH RD	2.4461	345.76
049110010000	DRIVER DORIS S REMAINDER TRUST TR		2.8626	404.63
049110011000	STEPHENS BRENT J	17785 CR 86A	4.1586	587.82
049110012000	HULSMAN JOHN ROBERT JR	26850 CR 23	4.4031	622.38
049110013000	GNOSS PARTNERSHIP NO 3	27030 CR 23	3.1655	447.44
049110014000	PAYNE FAM PARTNERSHIP L P		1.8669	263.89
049110022000	TIGER RANCHES INC		0.5842	82.58
049110023000	TIGER RANCHES INC		0.7595	107.36
049110024000	TIGER RANCHES INC		0.7595	107.36
049110025000	DRIVER REMAINDER TRUST		0.3797	53.67
049110026000	DORIS DRIVER REMAINDER TRUST	17752 OAKDALE RANCH LN	11.6760	1,650.40
049110027000	DRIVER REMAINDER TRUST		3.0378	429.39
049110028000	MIGUEL FAM TRUST	26941 HWY 16	1.2084	170.81
049110029000	CARL GREGORY TRIPLE NET ACQUISITIONS LLC	26875 HWY 16	17.1010	2,417.23
049120001000	SYAR INDUSTRIES INC		0.0884	12.50
049120002000	SYAR INDUSTRIES INC		0.1213	17.15
049120003000	SYAR INDUSTRIES INC		0.1213	17.15
049120009000	CHICKOHOMINY LANDS INC		2.9210	412.88
049120012000	MADISON 155 RANCH LLC		0.1540	21.77
049120019000	ARMSTRONG FAM TRUST	27490 HWY 16	2.3584	333.36
049120022000	NUNHEMS MELONS INC	27502 HWY 16	11.3546	1,604.97
049120025000	ESPARTO FARMS LLC	28636 HWY 16	9.9854	1,411.44
049120026000	SYAR INDUSTRIES INC		2.6697	377.36
049120028000	ESPARTO FARMS LLC	27790 CR 20X	8.1934	1,158.14
049120029000	CHICKOHOMINY LANDS INC		0.1540	21.77
049120030000	MADISON 155 RANCH LLC	28628 HWY 16	2.0739	293.15
049120031000	MADISON 155 RANCH LLC		1.2900	182.34
049120034000	MADISON 155 RANCH LLC		1.1684	165.15
049120035000	MADISON 155 RANCH LLC		0.2921	41.29
049120036000	MADISON 155 RANCH LLC		0.5334	75.40
049120038000	ESPARTO COMMUNITY SERV DIST		0.0000	0.00
049130001000	SYAR INDUSTRIES INC		0.1208	17.08
049130007000	ESPARTO SANITARY DISTRICT	27228 HWY 16	8.5505	1,208.61

**Esparto Fire Protection District
Fire Protection and Emergency Response Services Assessment
Assessment Roll 2023-2024**

Assessment Number & Assessor			ESFE	
Parcel Number	Owner Name(s)	Site Address	Units	Assessment
049130009000	JUSTICE CHAD L	27130 HWY 16	1.4129	199.71
049130011000	PEARSON THEODORE & PAMELA	17153 ALPHA ST	1.3837	195.59
049130013000	ESPARTO COMMUNITY SERV DIST		0.1540	21.77
049130016000	RODRIGUEZ CELESTINO & ROCIO T		0.1540	21.77
049130018000	RODRIGUEZ CELESTINO & ROCIO T	17091 ALPHA ST	1.1500	162.55
049130020000	DOTY 2019 TRUST		0.1540	21.77
049130022000	DOTY 2019 TRUST	16991 ALPHA ST	1.1792	166.68
049130028000	GARCIA REV TRUST	26776 CR 19B	1.7050	241.00
049130029000	SYAR INDUSTRIES INC		0.1139	16.10
049130041000	ESPARTO FARMS LLC		1.1976	169.28
049130042000	JACOBS RANDALL JR & JENNIFER	27038 CAPAY ST	1.2376	174.93
049130045000	ESPARTO FARMS LLC		13.6703	1,932.30
049130047000	YOLO COUNTY OF		0.0000	0.00
049130048000	SYAR INDUSTRIES INC		8.3833	1,184.98
049130049000	ESPARTO COMMUNITY SERV DIST		0.0000	0.00
049130050000	ESPARTO COMMUNITY SERV DIST		0.1540	21.77
049130051000	SALVADOR FAM TRUST	27170 HWY 16	0.5258	74.32
049140002000	YCFWCD		0.0000	0.00
049140005000	SANDKUHLE 1994 LIV TRUST	25946 HWY 16	2.7966	395.30
049140006000	SPIVA FAM REV TRUST		0.1540	21.77
049140007000	SPIVA FAM REV TRUST		0.5258	74.32
049140008000	SPIVA FAM REV TRUST	26020 HWY 16	1.1500	162.55
049140009000	SPIVA FAM REV TRUST	26288 HWY 16	1.1500	162.55
049140010000	TAYLOR A FAM TRUST ETAL	26300 HWY 16	1.7050	241.00
049140011000	SPIRES DANIELLE L	16546 CR 87	1.2668	179.06
049140012000	TAYLOR A FAM TRUST ETAL		1.6758	236.87
049140013000	MORENO DANIEL RAY	16550 CR 87	0.5940	83.96
049140014000	HAYES LAURIE A	16586 CR 87	1.1792	166.68
049140015000	PRINCE WILLIAM R & PAMELA G	16510 CR 87	1.1500	162.55
049140018000	HAAG LIV TRUST	16370 CR 87	0.5842	82.58
049140019000	HAAG LIV TRUST	16200 CR 87	0.5842	82.58
049140020000	HAAG LIV TRUST	16180 CR 87	1.4129	199.71
049140021000	HAAG LIV TRUST	16200 CR 87	0.5842	82.58
049140024000	SCHWENGER LIV TRUST	15940 CR 87	10.8397	1,532.19
049140025000	GEORGE EDWARD	16546 CR 87	1.7050	241.00
049140027000	NAVARRO ANTHONY C	16482 CR 87	2.3292	329.23
049140028000	CLEMENTS LIV TRUST	25752 HWY 16	2.8842	407.68
049140029000	ECHARTE 2009 FAM TRUST	25548 CR 19H	1.3545	191.46
049140032000	FRIEDMAN ALAN WAYNE	25370 HWY 16	2.1031	297.27
049140034000	FRIEDMAN STEVEN MICHAEL		0.1540	21.77
049140035000	MCG LAND & FARMS LLC	16207 JENSEN LN/ 163 LN	8.2513	1,166.32
049140040000	CALIFORNIA STATE OF		0.0000	0.00
049140041000	YOLO COUNTY OF		0.0000	0.00
049140042000	JENSEN TRUST	16416 JENSEN LN	14.8707	2,101.97
049140043000	CALIFORNIA STATE OF		0.0000	0.00
049150002000	ERICKSON SURV FAM TRUST	16645 CR 85B	3.4100	482.00
049150003000	WANSHOP 2009 REV TRUST	25375 CR 20A	1.4713	207.97
049150004000	CRINER RANDY & KELLY	16855 CR 85B	1.4129	199.71
049150005000	JESPERSEN HOWARD	25380 CR 21A	1.5005	212.10
049150007000	WESTERDAHL MELVIN A & IRIS TR	25739 CR 20A	2.5921	366.39
049150008000	ROMAN CATHOLIC BISHOP OF SAC	25633 CR 20A	8.5505	1,208.61
049150009000	BAIR EZRA & JAMIE NICOLE	25617 CR 20A	1.1500	162.55
049150010000	BAHLMAN SCOTT W ET AL	25477 CR 20A	1.3253	187.33
049150011000	YCFWCD		0.0000	0.00
049150022000	ESPARTO ELEMENTARY SCHOOL	26137 GRAFTON ST	17.1010	2,417.23
049150029000	ESPARTO UNIFIED SCHOOL DIST	17120 OMEGA ST	8.5505	1,208.61
049150031000	KUEHN FAM REV TRUST		0.8179	115.61

**Esparto Fire Protection District
Fire Protection and Emergency Response Services Assessment
Assessment Roll 2023-2024**

Assessment Number & Assessor			ESFE	
Parcel Number	Owner Name(s)	Site Address	Units	Assessment
049150032000	MANAS RANCH LIV TRUST	25838 CR 21A	1.5005	212.10
049150033000	MANAS RANCH LIV TRUST	23936 CR 21A	1.5005	212.10
049150040000	WESTSIDE SAN RAMON LLC	25615 HWY 16	1.3729	194.06
049150044000	ESPARTO COMMUNITY SERV DIST		0.0000	0.00
049150052000	MELENDEZ RAUL		3.9466	557.85
049160001000	CALIFORNIA STATE OF	17240 YOLO AVE	8.5505	1,208.61
049160010000	MCNAMARA TRACY		0.1540	21.77
049160017000	YOLO COUNTY OF		8.5505	1,208.61
049160018000	CALIFORNIA STATE OF	27076 HWY 16	0.1540	21.77
049160019000	CAMPBELL MORNA S	26640 HWY 16	1.1792	166.68
049160020000	ESPARTO UNIFIED SCHOOL DIST		0.1540	21.77
049160021000	YOCHA DEHE WINTUN NATION		0.5258	74.32
049160023000	DE LA FUENTE CARLOS	27020 HWY 16	1.3253	187.33
049160025000	YOCHA DEHE WINTUN NATION		8.5505	1,208.61
049170001000	KUEHN FAM REV TRUST	25757 CR 21A	1.3837	195.59
049170003000	PLACE CHRIS & NICOLE T	25949 CR 21A	1.4129	199.71
049170004000	KNIGHT LORETTA	26057 CR 21A	1.4129	199.71
049170005000	WEST DONALD L & SHARI L & WEST FAM TRUST	26257 CR 21A	2.5629	362.27
049170006000	ELLIS FAM TRUST	26469 CR 21A	1.4129	199.71
049170012000	PICKEREL JOHN	26789 HWY 16	6.2813	887.86
049170013000	TIGER RANCHES INC		0.8179	115.61
049170014000	SPIVA WANDA G ETAL SUCC TR	17606 CR 86A	2.9134	411.81
049170015000	SPIVA TOM & WANDA FAM REV TRUST		0.6426	90.83
049170017000	SAGARA STEVEN HIDESHI & DENISE WHITE	17677 CR 86	2.0847	294.67
049170018000	RYAN EDWARD J & COLLEEN M	17501 CR 86	1.2668	179.06
049170019000	GNOSS PARTNERSHIP NO 4	17500 CR 86	3.4868	492.86
049170020000	CADENA 2004 TRUST	17570 CR 86	1.8218	257.51
049170023000	AVALOS ISAAC P	17905 CR 85C	1.7634	249.26
049170025000	JONES DANIEL A & WHITEFORD ANNETTE M	18088 CR 86	1.8218	257.51
049170026000	STEPHENS MARCY L	17989 CR 85C	1.7634	249.26
049170027000	GILL JAGJIT S & RANJIT K ETAL	25620 CR 23	1.7050	241.00
049170028000	MEIDINGER FAM TRUST	18240 CR 86	1.8510	261.64
049170029000	LUCAS WALTER C & DAWN L	18341 CR 86	1.9387	274.04
049170030000	MACHADO REV TRUST	26450 CR 23	2.7966	395.30
049170031000	MACHADO REV TRUST		0.4382	61.94
049170032000	VAZQUEZ CONCEPCION	18101 CR 86	2.9426	415.94
049170037000	CORRALES REV TRUST		0.6426	90.83
049170038000		26451 CR 21A	0.0000	0.00
049170039000	GRIFFIN & MARKS TRUST	17801 CR 85C	1.2961	183.20
049170040000	RAVEN DAVID	17805 CR 85C	9.8757	1,395.93
049170041000	BENCKEN ELIZABETH & GIBSON ELIZABETH M TR	17809 CR 85C	1.2668	179.06
049170042000	HARRINGTON SHELLY & WILLIAM	25895 CR 21A	1.4129	199.71
049170043000	EDELMAN FAM TRUST	25911 CR 21A	1.4129	199.71
049170046000	ROATH FAM TRUST ETAL	26545 CR 21A	1.4129	199.71
049170047000	MAPES TRUST		1.4129	199.71
049170048000	SHIN SAM S & SUNHEE LUCIA		9.8757	1,395.93
049170049000	PICKEREL JOHN	26797 HWY 16	8.5505	1,208.61
049170050000	KUHN TRUST	26605 HWY 16	1.4129	199.71
049170051000	STATE OF CA	26671 HWY 16	0.0000	0.00
049170053000	AKAL RETAIL LLC	17656 CR 86	1.0224	144.52
049170054000	AKAL RETAIL LLC		0.9639	136.25
049170068000	AKAL RETAIL LLC	17795 CR 86	1.6466	232.75
049170069000	MATSUMURA REV TRUST		0.5550	78.45
049170070000	AKAL RETAIL LLC	17899 CR 86	1.7050	241.00
049170071000	MATSUMURA REV TRUST	18080 CR 86A	2.8550	403.55
049180001000	PHILLIPS DEC TRUST	23670 CR 23	1.3017	184.00
049180002000	CODY SAMUEL C & JANE P TRUST	23820 CR 22	4.0887	577.94

**Esparto Fire Protection District
Fire Protection and Emergency Response Services Assessment
Assessment Roll 2023-2024**

Assessment Number & Assessor Parcel Number	Owner Name(s)	Site Address	ESFE Units	Assessment
049180003000	M & P FAMILY LP		0.1547	21.87
049180005000	MOTRONI MICHAEL G & KIMBERLEE DENE		0.1694	23.94
049180006000	CAPAY CEMETERY DISTRICT		0.0228	3.22
049180008000	NERI FAM REV TRUST	24971 CR 22	1.9719	278.73
049180009000	FOSTER SAMUEL JOSEPH	24815 CR 22	2.0361	287.80
049180010000	MOTRONI MICHAEL G & KIMBERLEE DENE	24727 CR 22	2.6788	378.65
049180013000	PADDOCK FAM TRUST	24155 CR 22	1.5657	221.31
049180014000	KENDRICK DAVID L & JODY TROTTER	24075 CR 22	2.0058	283.52
049180015000	WRIGHT EDWARD E	23945 CR 22	1.8884	266.93
049180016000	FOSTER 2001 REV LIVING TRUST	24204 CR 23	10.9271	1,544.55
049180017000	FOSTER 2001 REV LIVING TRUST	24310 CR 23	3.0141	426.04
049180018000	HAVSTAD 2013 LIVING TRUST	24490 CR 22A	1.8004	254.49
049180019000	ESTEPA FRANKIE A & LINDA & ESTEPA FAM TRUST	24501 CR 22A	1.2723	179.84
049180020000	MILLER SHARON ANN	24710 CR 22A	3.6546	516.58
049180021000	VINOGRADOV PAUL & JANA	24780 CR 22A	1.0925	154.42
049180024000	LUBLIN DIMITRY	24477 CR 22A	11.8364	1,673.08
049180025000	BROCK DANNE L & CYNTHIA L & BROCK REV TRUST	17940 CR 85B	4.0925	578.47
049180027000	KNIGHT FAM TRUST	25491 CR 21A	1.5005	212.10
049180028000	ALLAHYARI LIV TRUST	17170 CR 85C	1.7926	253.38
049180029000	ALLAHYARI LIV TRUST		0.7303	103.23
049180030000	BERMUNDEZ JOSE & ADELINA	17287 CR 85B	1.4421	203.84
049180031000	PEDROIA 2020 LIV TRUST	17435 CR 85B	1.7470	246.94
049180032000	YCFWCD		0.0000	0.00
049180035000	HAYES REV TRUST	17872 CR 85C	1.7050	241.00
049180036000	BARON JUAN & MARIA E	17533 CR 85B	1.7470	246.94
049180038000	MORALES CHILDREN IRREV TRUST ETAL	17906 CR 85C	1.6174	228.62
049180040000	JENNINGS CASSIE DIANE ETAL	17855 CR 85B	0.0173	2.45
049180041000	DUGAN TRUST	17899 CR 85B	1.5863	224.22
049180042000	WILLIAMS JEFFREY & JAYNE	17990 CR 85C	2.4168	341.61
049180043000	BEE DEBORAH L	18018 CR 85C	1.3837	195.59
049180044000	CHAPPLE & SCHRUPP LIV TRUST	25426 CR 23	1.4257	201.52
049180046000	KENDRICK CASEY & DAVID JOSHUA	17965 CR 85B	1.4257	201.52
049180048000	BYRNE 2003 FAM REV TRUST	17560 CR 85B	2.5698	363.24
049180049000	PRUETT DENNIS L	24305 CR 22	1.5951	225.47
049180050000	MOORE PETER G & DENISE A	24463 CR 22	1.3935	196.97
049180051000	VIGIL KATHERINE L	25065 CR 22	1.8434	260.56
049180052000	COOPER GRANT S	17070 CR 85B	3.1084	439.37
049180053000	BAUER RICHARD C LE	25045 WALDEN LN	1.8755	265.10
049180054000	BRISTOL TRUST	24961 BIRD WAY	1.6602	234.67
049180055000	WHITMER RANDAL G ETAL		0.5784	81.76
049180056000	MCNABB BRET R & SOPHIA D	17661 CR 85B	1.8434	260.56
049180057000	SCRUGGS REV TRUST	17844 CR 85C	2.7674	391.17
049180058000	FLEMMER CARL W & CAROL J TR	24626 CR 23	1.6244	229.61
049180059000	BRO PROPERTIES LLC	24701 CR 22A	11.1525	1,576.41
049180060000	LINK GREGORY P	24530 CR 22	1.9076	269.64
049180061000	FOSTER 2001 REV LIVING TRUST	24250 CR 22	9.7756	1,381.78
049180062000	CARABEZ ARIANA & AGUSTIN	17576 CR 85C	1.2668	179.06
049180063000	SMITH RICHARD D & PILAR S & SMITH FAM TRUST	17600 CR 85C	1.5589	220.35
049180064000	GLASS JILL	25236 CR 23	1.4578	206.06
049180065000	LEONARD ELIZABETH LENCHEN	25302 CR 23	1.2668	179.06
049180066000	ROTOI JAMES A & TANYA E	25388 CR 23	1.2668	179.06
049180067000	DIAZ JOSE A	24899 CR 22A	2.0040	283.27
049180068000	FONG FAM TRUST	17780 CR 85B	11.3774	1,608.20
049180069000	MELENDEZ RAUL & EVELIN	17823 CR 85B	2.8192	398.49
049180070000	MELENDEZ VICTOR	17837 CR 85B	2.8192	398.49
049180071000	VIRGEN FAM TRUST	25375 CR 21A	2.5045	354.01
049180073000	GARCIA ALBA & LECH	17215 CR 85B	1.2961	183.20

**Esparto Fire Protection District
Fire Protection and Emergency Response Services Assessment
Assessment Roll 2023-2024**

Assessment Number & Assessor			ESFE	Assessment
Parcel Number	Owner Name(s)	Site Address	Units	
049180074000	AVINA MARIA & GUILLERMO	17249 CR 85B	1.2961	183.20
049180077000		24204 CR 23	0.0000	0.00
049180078000	GARCIA JR FAM TRUST	24203 CR 22	3.3075	467.52
049190001000	M & P FAMILY LP		0.6185	87.42
049190004000	JANDERA FAM TRUST	24045 HWY 16	1.2723	179.84
049190006000	YCFWCD		0.0000	0.00
049190007000	M & P FAMILY LP		0.3302	46.67
049190008000	VANNUCCI RONALD J		0.1694	23.94
049190009000	MIDDLETON LIV TRUST	25151 HWY 16	1.5863	224.22
049190010000	VANNUCCI RONALD J	25125 HWY 16	1.6827	237.85
049190011000	ESPARTO UNIFIED SCHOOL DIST	16482 CR 85B/16558 CR 85B	2.1206	299.75
049190014000	HAYES DOUGLAS M & DIANE E	25272 CR 22	1.2971	183.35
049190015000	KLINKENBORG REV TRUST	25220 CR 22	1.2971	183.35
049190016000	BARSOTTI FREEMAN & CAROL	23585 HWY 16	1.7124	242.05
049190019000	M & P FAMILY LP		0.3378	47.75
049190021000	MIDDLEMAN GINA P	16800 CR 85B	1.2971	183.35
049190023000	SCHEURING SURV FAM REV TRUST ETAL	16730 CR 85B	4.1568	587.56
049190024000	CAPAY CEMETERY DISTRICT		0.1694	23.94
049190025000	M & P FAMILY LP		0.5579	78.86
049190026000	23861 CAPAY FARM LLC		0.0347	4.90
049190027000	NITTA FAM TRUST	23863 HWY 16	1.2052	170.36
049200003000	RAYLS RICHARD J & AMANDA L	17860 CR 83A	1.6537	233.75
049200004000	M & P FAMILY LP	18240 CR 83A	1.4842	209.79
049200005000	YOCHA DEHE WINTUN NATION		0.2640	37.32
049200006000	M & P FAMILY LP		0.4158	58.77
049200011000	GRISSE BRANDON & SARAH	17947 CR 83A	1.7417	246.19
049200013000	DIAZ FAM TRUST	18015 CR 83A	2.7979	395.48
049200014000	CHERVINSKAS DANIEL	23827 CR 23	1.7417	246.19
049200016000	LEONARD 2003 REV TRUST	23923 CR 23	1.5951	225.47
049200018000	LOCATELLI FAM TRUST		1.2659	178.93
049200019000	LOCATELLI FAM TRUST		0.0554	7.83
049200020000	LOCATELLI FAM TRUST		0.0554	7.83
049200021000	KUPPENBENDER FAM TRUST ETAL		0.1547	21.87
049210001000	OSBURN JASON & NOLA	24025 CR 23	1.3017	184.00
049210002000	FOSTER 2001 REV LIVING TRUST	24151 CR 23	1.8591	262.78
049210003000	MELENDEZ RAUL	24335 CR 23	1.4484	204.73
049210004000	COATES FAM TRUST ETAL	24321 CR 23	2.2991	324.98
049210006000	ABBOTT DOROTHY ETAL		0.1629	23.03
049210007000	HAYES FAM 2006 REV TRUST	18250 CR 85	1.3017	184.00
049210008000	ROMERO LEO	18330 CR 85	1.2430	175.70
049210009000	LANTZ FRED LEE ETAL	18388 CR 85	1.2137	171.56
049210010000	MORIS FAM TRUST	18410 CR 85	1.1843	167.40
049210011000	MORIS FAM TRUST		0.1547	21.87
049210012000	MORIS FAM TRUST	18464 CR 85	1.3017	184.00
049210013000	SCHENK-MCDONALD SEP PROP TRUST	24840 CR 23A	1.6537	233.75
049210015000	EMIGH REV TRUST	24646 CR 23A	0.5085	71.88
049210016000	LAMBORN TRUST	24590 CR 23A	2.7794	392.87
049210017000	BONATO 2018 REV TRUST	24492 CR 23A	1.7417	246.19
049210022000	STEINER ELIZABETH A & DAVID L	24543 CR 23A	1.6244	229.61
049210023000	SCHEMEL FAM TRUST	24615 CR 23A	1.3604	192.29
049210025000	JORGENSEN TRUST	24757 CR 23A/24839	2.9261	413.60
049210026000	ANDERSON CLAYTON & WAYNE	24909 CR 23A	1.7124	242.05
049210027000	MARTIN KATHERINE L & CRISPIN E	24985 CR 23A	1.1550	163.26
049210029000	FERRO INVESTMENTS LP		0.2772	39.18
049210030000	FERRO INVESTMENTS LP		0.1386	19.59
049210034510	BLACK FAM TRUST	24499 CR 23A	1.2555	177.46
049210034520	BLACK FAM TRUST	24991 CR 23A	1.1550	163.26

**Esparto Fire Protection District
Fire Protection and Emergency Response Services Assessment
Assessment Roll 2023-2024**

Assessment Number & Assessor			ESFE	Assessment
Parcel Number	Owner Name(s)	Site Address	Units	
049210035000	SCHMAUDERER IVAN KARL	24681 CR 23A	1.4484	204.73
049210036000	BARBARICK JANEEN M	24685 CR 23A	1.4777	208.87
049210037000	DAVIS RESIDUAL TRUST	24485 CR 23	2.2991	324.98
049210038000	DAVIS RESIDUAL TRUST	24497 CR 23	1.4484	204.73
049210039000	SADRO STEVEN	24700 CR 23A	1.3017	184.00
049210041000	POWER TRUST	24712 CR 23A	1.3310	188.14
049210044000	WHENT 2006 REV TRUST	24658 CR 23A	1.3017	184.00
049220001000	HULSMAN JOHN ROBERT JR		0.2751	38.89
049220002000	BAINS FARMS LLC	26075 CR 23	4.8305	682.79
049220003000	HULSMAN JOHN ROBERT JR		0.3797	53.67
049220004000	FARNHAM DONALD W	18640 CR 86A & 18700	8.4341	1,192.16
049220005000	YCFWCD		0.0000	0.00
049220006000	BOUNDARY BEND ASSETS INC		7.7450	1,094.76
049230002000	MARIANI JOSEPH TRUST ET AL		2.9070	410.90
049230003000	YCFWCD		0.0000	0.00
049230010000	SCRIBNER REV TRUST		4.3571	615.88
049230012000	GRAY PHYLLIS N LE	26877 CR 23	3.4176	483.08
049230013000	SCRIBNER STEPHEN LE ROY FAMILY TRUST	27051 CR 23	2.5997	367.47
049230014000	ABBOTT BRUCE V & DAWN M	26975 CR 23	1.1792	166.68
049240001000	WRIGHT 1991 TRUST ETAL	26312 HWY 16	0.1540	21.77
049240002000	WRIGHT 1991 TRUST ETAL		0.1540	21.77
049240005000	HARRINGTON MARK J	16758 CR 87	6.2813	887.86
049240006000	BETTENCOURT RALPH & ELIDA	16746 CR 87	1.1500	162.55
049240007000	SANDOVAL-ZAMORA JOSE	16730 CR 87	1.1500	162.55
049240008000	BETTENCOURT RALPH & ELIDA		0.1540	21.77
049240009000	CLUGSTON REV TRUST	16690 CR 87	1.3253	187.33
049240016000	HERBST MFG INC	26324 HWY 16	6.2813	887.86
049240017000	MNEMIC TRAIN LLC	26580 WOODLAND AVE	8.5505	1,208.61
049240023000	ESPARTO COMMUNITY SERV DIST	26490 WOODLAND AVE	8.5505	1,208.61
049240024000	ACOSTA FRANCISCO ETAL		8.5505	1,208.61
049250001000	ZENTNER GLENN A	16737 CR 87	1.1500	162.55
049250002000	RUTAN GENE ETAL	16751 CR 87	2.3000	325.11
049250003000	MODENA ENTERPRISES LLC		0.1540	21.77
049250004000	MODENA ENTERPRISES LLC		0.1540	21.77
049250007000	MODENA ENTERPRISES LLC	26700 WOODLAND AVE	0.1540	21.77
049250009000	ESPARTO STORY LLC		0.0311	4.40
049250010000	MERCY PROPERTIES CALIFORNIA		0.1540	21.77
049250011000	MERCY HOUSING CALIFORNIA 54	16797 CR 87	19.0854	2,697.72
049250012000	MERCY HOUSING CAL 76 L P	26766 WOODLAND AVE	19.0854	2,697.72
049250013000	MERCY HOUSING CALIFORNIA 54		0.0000	0.00
049261001000	CHERVINSKAS DAN Q	26208 WOODLAND AVE	1.1500	162.55
049261003000	LOZA LILIA BERENICE ETAL	26224 WOODLAND AVE	1.1500	162.55
049261004000	GARCIA TERESA T ETAL	26242 WOODLAND AVE	1.1500	162.55
049261005000	VALTIERRA CANDY L	26264 WOODLAND AVE	1.1500	162.55
049261006000	MENDOZA JOEL	26278 WOODLAND AVE	1.1500	162.55
049262001000	SANCHEZ CUITLAHUAC	16807 OMEGA ST	2.3000	325.11
049262002000	BROWN TERESA L & JAMES E JR	26223 WOODLAND AVE	1.1500	162.55
049262003000	VARGAS RAQUEL	26235 WOODLAND AVE	1.1500	162.55
049262004000	ROBLES BEN & SOCORRO	26247 WOODLAND AVE	1.1500	162.55
049262006000	QI XIAOPEI & FANG YING	26253 WOODLAND AVE	1.1500	162.55
049262007000	QI XIAOPEI & FANG YING	26261 WOODLAND AVE	2.3000	325.11
049262008000	VFW WESTERN YOLO NO 7143	16812 ORLEANS ST	8.5505	1,208.61
049262009000	VFW WESTERN YOLO NO 7143	16812 ORLEANS ST	0.0000	0.00
049263002000	MYERS DORIS M	26236 CAPAY ST	1.1500	162.55
049263003000	MYERS DORIS M	26248 CAPAY ST	1.1500	162.55
049263004000	MCKEE BRYAN	26256 CAPAY ST	1.1500	162.55
049263006000	JACOBO JORGE ABEL GAXIOLA	26206 CAPAY ST	2.3000	325.11

**Esparto Fire Protection District
Fire Protection and Emergency Response Services Assessment
Assessment Roll 2023-2024**

Assessment Number & Assessor			ESFE	
Parcel Number	Owner Name(s)	Site Address	Units	Assessment
049263007000	BELSHAW FAM REV LIV TRUST	26210 CAPAY ST	0.9543	134.89
049263008000	MULLY THADDEUS	16872 ORLEANS ST	1.1500	162.55
049263010000	SANDOVAL KRISTINA M	26288 CAPAY ST	1.1500	162.55
049263011000	FORNES BOBBY	26266 CAPAY ST	1.1500	162.55
049264003000	HERNANDEZ DORA	26341 WOODLAND AVE	1.9085	269.77
049264007000	SCHWARZGRUBER FAM TRUST	16816 ANTELOPE ST	5.7256	809.31
049264008000	GONSALVES FAM TRUST	26360 WOODLAND AVE	1.9085	269.77
049264010000	AMERICAS HAPPY LIV TRUST		1.1500	162.55
049264011000	AMERICAS HAPPY LIV TRUST	26317 WOODLAND AVE	1.1500	162.55
049264012000	AMERICAS HAPPY LIV TRUST	16841 ORLEANS ST	1.1500	162.55
049265001000	AGUIRRE FRANCISCO SOTO	16857 ORLEANS ST	1.1500	162.55
049265002000	MCCORMICK RONITA & MARDIE	16875 ORLEANS ST	1.1500	162.55
049265005000	HERRERA JUAN M & REBECCA	26396 CAPAY ST	1.1500	162.55
049265006000	HEREDIA FAM LIV TRUST	26358 CAPAY ST	1.1500	162.55
049265007000	QUINTANA CRISTINA	26372 CAPAY ST	1.1500	162.55
049265008000	CHAVIRA ARACELI & JESUS	26384 CAPAY ST	1.1500	162.55
049265009000	SAHOTA DEVINDER S & SUSVIR T	26336 CAPAY ST	2.3000	325.11
049265010000	SAHOTA DEVINDER S & SUSVIR T	26346 CAPAY ST	2.3000	325.11
049271003000	SALAZAR IGNACIO & ASUNCION	26443 WOODLAND AVE	1.1500	162.55
049271004000	SINGH AMRIK	16814 FREMONT ST	8.5505	1,208.61
049271006000	CHERRY GUY TR	26431 WOODLAND AVE	6.2813	887.86
049271008000	CASH RICHARD	26407 WOODLAND AVE	1.1500	162.55
049271009000	R & R PACIFIC CONSTRUCTION INC	26415 WOODLAND AVE	8.5505	1,208.61
049271010000	TAKHAR NIRANJAN S & GURMIT	16843 ANTELOPE ST	1.1500	162.55
049272001000	FIGUEROA CARLOS ENRIQUE	16877 ANTELOPE ST	2.3000	325.11
049272002000	CASSON REV TRUST	26418 CAPAY ST	1.1500	162.55
049272003000	ROMERO HECTOR MANUEL MADRIGAL	26430 CAPAY ST	1.1500	162.55
049272004000	WENTZ JENNIFER LEA & ERICH GERARD	26442 CAPAY ST	1.1500	162.55
049272005000	REEVES STEVEN E & JUDITH M	26454 CAPAY ST	1.1500	162.55
049272006000	JIMENEZ SERVANDO R	26466 CAPAY ST	1.1500	162.55
049272007000	GASTINEAU WESLEY BYRON	16852 FREMONT ST	1.1500	162.55
049272008000	LOPEZ JOSE D MURILLO	26478 CAPAY ST	1.1500	162.55
049272009000	HERNANDEZ ASCENCION & YOLANDA S LE	16874 FREMONT ST	1.1500	162.55
049273002000	NEW SEASON COMMUNITY DEVELOPMENT CORP	26547 WOODLAND AVE	0.1540	21.77
049273003000	NEW SEASON COMMUNITY DEVELOPMENT CORP	16802 YOLO AVE	0.1540	21.77
049273004000	NEW SEASON COMMUNITY DEVELOPMENT CORP	16822 YOLO AVE	8.5505	1,208.61
049273005000	FOSTER 2001 REV LIVING TRUST		0.1540	21.77
049273006000	MENDOZA GUALBERTO & ALVARO	16827 FREMONT ST	8.5505	1,208.61
049274001000	MELENDREZ ARTURO & MARIA D	26510 CAPAY ST	1.1500	162.55
049274002000	BETTENCOURT ROBERT & LAUREN	26522 CAPAY ST	1.1500	162.55
049274003000	LOPEZ ROSA & ROGELIO	26536 CAPAY ST	1.1500	162.55
049274004000	NOBLES MICHAEL T	26548 CAPAY ST	1.1500	162.55
049274005000	KINTER JAMES	26560 CAPAY ST	1.1500	162.55
049274010000	NEW SEASON COMMUNITY DEVELOPMENT CORP	16850 YOLO AVE	9.7005	1,371.17
049281001000	MURILLO AURELIO	16905 OMEGA ST	1.1500	162.55
049281002000	CRAWFORD CHRISTOPHER	26221 CAPAY ST	1.1500	162.55
049281003000	CARRILLO MARIA VICTORIA	26233 CAPAY ST	1.1500	162.55
049281004000	ROBLES TRUST	26241 CAPAY ST	1.1500	162.55
049281005000	OCHOA LIV TRUST	26253 CAPAY ST	1.1500	162.55
049281006000	GREEN PHILLIP C & SAMANTHA L	26265 CAPAY ST	1.1500	162.55
049281007000	TUIL JAY LEE	16906 ORLEANS ST	1.1500	162.55
049282001000	SANCHEZ AIDA E OROSCO	26210 GRAFTON ST	1.1500	162.55
049282003000	DIXON LIV TRUST	26248 GRAFTON ST	1.1500	162.55
049282004000	GWERDER JUSTIN	26260 GRAFTON ST	1.1500	162.55
049282006000	ZANOLINI TIMOTHY W & BARBARA A	16952 ORLEANS ST	1.1500	162.55
049282007000	RIVAS RICARDO & GREGORIA	26272 GRAFTON ST	1.1500	162.55
049282008000	HARRIS ARTHUR M	26222 GRAFTON ST	1.1500	162.55

**Esparto Fire Protection District
Fire Protection and Emergency Response Services Assessment
Assessment Roll 2023-2024**

Assessment Number & Assessor			ESFE	Assessment
Parcel Number	Owner Name(s)	Site Address	Units	
049282009000	VAZQUEZ JOSE JESUS CONRIQUE ETAL	26234 GRAFTON ST	1.1500	162.55
049283001000	YOLO COUNTY OF	17011 OMEGA ST	0.0000	0.00
049283004000	CANO CONCEPCION	26245 GRAFTON ST	1.1500	162.55
049283005000	CANO CONCEPCION		0.1540	21.77
049283006000	JORDAN MELISSA D	17012 ORLEANS ST	1.1500	162.55
049283007000	NORDSTROM FAM TRUST	17011 OMEGA/26231 GRAFTON	1.1500	162.55
049284001000	YOLO COUNTY OF		0.0000	0.00
049284002000	WILLIAMS BRIAN LEE	17057 OMEGA ST	1.1500	162.55
049284003000	SAHOTA DEVINDER & SUSVIR	26222 MADISON ST	2.3000	325.11
049284004000	KILPATRICK MARY J	26240 MADISON ST	1.1500	162.55
049284005000	MONTES ADRIAN & MEGAN ANN	26250 MADISON ST	1.1500	162.55
049284006000	BORGES AURORA	26262 MADISON ST	1.1500	162.55
049284007000	BELSHAW FAM REV LIV TRUST	26274 MADISON/17028 ORLEANS	2.3000	325.11
049285001000	WHITE GARY & ROBIN	16907 ORLEANS ST	1.1500	162.55
049285002000	WEEKS DONALD DUANE	16931 ORLEANS ST	1.1500	162.55
049285003000	SANTILLAN CARLOS & MARIA	26335 CAPAY ST	1.1500	162.55
049285004000	SANABRIA JULIAN	26347 CAPAY ST	1.1500	162.55
049285005000	SEGURA FRANCISCO	26359 CAPAY ST	2.3000	325.11
049285006000	KEISLAR REV TRUST	26383 CAPAY ST	1.1500	162.55
049286001000	TORRES ALMA NOELIA D	16971 ORLEANS ST	1.1500	162.55
049286002000	VARGAS LETICIA MATA	26320 GRAFTON ST	1.1500	162.55
049286003000	GALVAN EPIMENIA & PAULA	26340 GRAFTON ST	2.3000	325.11
049286004000	CONTRERAS ELISA AGUIRRE	26352 GRAFTON ST	1.1500	162.55
049286005000	ULRICKSEN RONALD & WENDY	26364 GRAFTON ST	1.1500	162.55
049286006000	NARBAIZ ARTHUR E ETAL	26378 GRAFTON ST	1.1500	162.55
049286007000	THARP FAM TRUST	26388 GRAFTON ST	1.1500	162.55
049287002000	STOTTS SARA MAY	26333 GRAFTON ST	1.1500	162.55
049287003000	DE LA CRUZ MARCUS	26345 GRAFTON ST	1.1500	162.55
049287005000	CARDOZA JENNIFER A	26379 GRAFTON ST	1.1500	162.55
049287006000	CASTANEDA FELIX V & IRMA B	26321 GRAFTON ST	1.1500	162.55
049287007000	GARZA MARCO & VICKIE	17017 ORLEANS ST	1.1500	162.55
049287008000	NEVIS FAM TRUST	26353 GRAFTON ST	2.3000	325.11
049287009000	ALVAREZ FREDI CALDERON	26365 GRAFTON ST	1.1500	162.55
049288001000	RAMIREZ-AGUIERRE MARIA	26312 MADISON ST	1.1500	162.55
049288002000	CASTILLO REV LIV TRUST	26324 MADISON ST	1.1500	162.55
049288004000	COOPER FAM TRUST	26354 MADISON ST	1.1500	162.55
049288005000	HARMON ZACHARY FRANK	17064 ANTELOPE ST	1.1500	162.55
049288006000	MARQUEZ JESUS & MARIA L	26330 MADISON ST	1.1500	162.55
049288007000	KING MADISON RENE	26342 MADISON ST	1.1500	162.55
049291001000	MENDOZA RICARDO	26411 CAPAY ST	1.1500	162.55
049291002000	FOSTER 2001 REV LIVING TRUST	26423 CAPAY ST	1.1500	162.55
049291003000	FOSTER 2001 REV LIVING TRUST	26435 CAPAY ST	1.1500	162.55
049291005000	COLLINS PATRICK & DELORIS J	26471 CAPAY ST	1.1500	162.55
049291006000	BETTENCOURT RALPH & ELIDA	26483 CAPAY ST	1.1500	162.55
049291007000	ARTEAGA LUGARDO ROBLES	16908 FREMONT ST	1.1500	162.55
049291008000	MURATALLA LILIANA	26459 CAPAY ST	1.1500	162.55
049291009000	ALVAREZ RAFAEL & MARIA	26447 CAPAY ST	1.1500	162.55
049292001000	SANFORD CHERYL	26408 GRAFTON ST	1.1500	162.55
049292003000	ERICKSON ERIK E ETAL	26456 GRAFTON ST	1.1500	162.55
049292004000	ALFARO MARIA MENDOZA	26468 GRAFTON ST	1.1500	162.55
049292006000	SASO JORDAN	26444 GRAFTON ST	1.1500	162.55
049292008000	RAMIREZ JOSE GUADALUPE	26420 GRAFTON ST	1.1500	162.55
049292009000	ENOS TIMOTHY F	26432 GRAFTON ST	1.1500	162.55
049292010000	STUBBERFIELD FAM IRREV TRUST	16958 FREMONT ST	1.1500	162.55
049292011000	DIXON LIV TRUST	26482 GRAFTON ST	1.1500	162.55
049293002000	SIFFORD AUSTIN K & MAKENNA	26435 GRAFTON ST	1.1500	162.55
049293003000	VONBARGEN JR MARTIN	26447 GRAFTON ST	1.1500	162.55

**Esparto Fire Protection District
Fire Protection and Emergency Response Services Assessment
Assessment Roll 2023-2024**

Assessment Number & Assessor			ESFE	Assessment
Parcel Number	Owner Name(s)	Site Address	Units	
049293004000	COUNTRYSIDE COMM CHURCH	26459 GRAFTON ST	1.1500	162.55
049293005000	COUNTRYSIDE COMM CHURCH	26479 GRAFTON ST	8.5505	1,208.61
049293006000	KIENY LAUREL AUTIN JR & LAVELLA	17013 ANTELOPE ST	1.1500	162.55
049293007000	CHERVINSKAS DANIEL Q & JOY RENEE	17021 ANTELOPE ST	2.3000	325.11
049294002000	LOPEZ ROGELIO & ROSA	26432 MADISON ST	1.1500	162.55
049294003000	EVANS JERAME A & CHRISTINA M	26458 MADISON ST	1.1500	162.55
049294004000	BERLIN DAVID & LISA	17062 FREMONT ST	1.1500	162.55
049294005000	AUKES REV TRUST	17033 ANTELOPE ST	2.3000	325.11
049294006000	AVINA GUILLERMO JR	26420 MADISON ST	1.1500	162.55
049295001000	JUSTICE MICHAEL & MICHELE D	26513 CAPAY ST	1.1500	162.55
049295002000	ELLASCES FRANK SR & MICHELLE	26525 CAPAY ST	1.1500	162.55
049295003000	PEREZ JACINTO & ANA L	26537 CAPAY ST	1.1500	162.55
049295004000	HERBST DAVID M & LINDA L & HERBST FAM REV	16902 YOLO AVE	6.2813	887.86
049296001000	ZENTNER ZACHARIAH & JULIE	26514 GRAFTON ST	1.1500	162.55
049296002000	HERBST DAVID MICHAEL & LINDA TR	26526 GRAFTON ST	1.1500	162.55
049296003000	HERBST MFG INC	16920 GRAFTON ST	6.2813	887.86
049297001000	ESPARTO FIRE PROTECTION DIST	16960 YOLO AVE	8.5505	1,208.61
049297002000	ESPARTO FIRE PROTECTION DIST	17020 YOLO AVE	8.5505	1,208.61
049298003000	ESPARTO BAPTIST CHURCH	26534 MADISON/17050 S GRAFTO	8.5505	1,208.61
049298009000	HUA REV TRUST	26548 MADISON ST	2.3000	325.11
049298010000	TAH 2017-2 BORROWER LLC	26560 MADISON ST	2.3000	325.11
049298011000	WHITING CARRIE J	26518 MADISON ST	2.3000	325.11
049298012000	MCNAMARA TRACY	26528 MADISON ST	1.1500	162.55
049298015000	R&E ENTERPRISES LLC	900 MADISON ST	0.1540	21.77
049299001000	DOUGLAS MATTHEW KEITH	26515 GRAFTON ST	1.1500	162.55
049299002000	WRIGHT FAM TRUST	26527 GRAFTON ST	0.1540	21.77
049299003000	HERBST FAM REV TRUST	26539 GRAFTON ST	1.1500	162.55
049299004000	THARP FAM TRUST	17015 GRAFTON ST	1.1500	162.55
049301001000	ALLAHYARI LIV TRUST	26621 CAPAY ST/ 16903-07 Y ST	9.7005	1,371.17
049301002000	MOLINA MIGUEL & LILIA	16915 YOLO AVE	8.5505	1,208.61
049301003000	CLINE TRUST	26635 CAPAY ST	9.7005	1,371.17
049301004000	BARSOTTI FAM TRUST	26647 CAPAY ST	1.1500	162.55
049301005000	JOHNSON DONALD S	26659 CAPAY ST	1.1500	162.55
049301006000	HERNANDEZ HERNAN & MAYRA	26679 CAPAY ST	1.1500	162.55
049302001000	TATHAM PATRICIA & CHRIS	16982 GRAFTON ST	1.1500	162.55
049302002000	OSSENFORT MICHAEL	26660 GRAFTON ST	1.1500	162.55
049302003000	SUCEVICH DANA L		0.1540	21.77
049302004000	SUCEVICH DANA L	16970 BONYNGE ST	1.1500	162.55
049303001000	YOLO COUNTY OF	17001 YOLO AVE	0.1540	21.77
049304002000	ALARCON ALIXX R	17075 GRAFTON ST	2.3000	325.11
049304003000	ESSEX ALISA M BECERRA	26663 GRAFTON ST	1.1500	162.55
049304004000	RAMIREZ JOSE MARTIN LEON	26677 GRAFTON ST	1.1500	162.55
049304005000	VILLEGAS AHAARON		0.1540	21.77
049304006000	GOLDEN CAROLYN	17053 GRAFTON ST	2.3000	325.11
049305001000	ESPARTO HIGH SCHOOL		0.2106	29.77
049305002000	ESPARTO HIGH SCHOOL		8.5505	1,208.61
049305003000	ESPARTO HIGH SCHOOL		0.2106	29.77
049305004000	ESPARTO HIGH SCHOOL		8.5505	1,208.61
049305005000	ESPARTO HIGH SCHOOL		0.1540	21.77
049305006000	ESPARTO HIGH SCHOOL		0.1540	21.77
049306001000	HAYES SEAN C	26712 GRAFTON ST	1.1500	162.55
049306002000	HAYES JOHN M & CYNTHIA M	26736 GRAFTON ST	1.1500	162.55
049306003000	ROONEY MARY ANNE & ROONEY MARY ANNE & REV	26760 GRAFTON ST	1.1500	162.55
049306005000	CALVERT AUSTIN & RACHEL	16954 WINTERS ST	1.1500	162.55
049306006000	LOPEZ TRUST	26784 GRAFTON ST	1.1500	162.55
049307003000	HAYES MICHAEL	26753 CAPAY ST	1.1500	162.55
049307006000	KLEMPAU PAUL A & NATALIE A	26717 CAPAY ST	1.1500	162.55

**Esparto Fire Protection District
Fire Protection and Emergency Response Services Assessment
Assessment Roll 2023-2024**

Assessment Number & Assessor Parcel Number	Owner Name(s)	Site Address	ESFE Units	Assessment
049307007000	DARLING RAYMOND TR	26735 CAPAY ST	1.1500	162.55
049307010000	ASHDOWN RANDALL W & MARNI A	26765 CAPAY ST	1.1500	162.55
049307011000	BENNETT FREDRICK L & MARGARET C	26785 CAPAY ST	1.1500	162.55
049307012000	BENNETT FREDRICK & MARGARET & BENNETT		0.1540	21.77
049311001000	PRYOR TRACY L & MICHAEL B	16823 YOLO AVE	6.2813	887.86
049311002000	HOG CANYON LLC	16811 YOLO AVE	8.5505	1,208.61
049311003000	DAKOTA HOLDINGS LLC	26615 WOODLAND AVE	2.1043	297.44
049311004000	SCOGGIN REV TRUST	26633 WOODLAND AVE	1.1500	162.55
049311005000	FUENTES RICARDO	26645 WOODLAND AVE	1.1500	162.55
049311006000	LOPEZ MARIO R	26655 WOODLAND AVE	2.3000	325.11
049311007000	GEORGE DALE & ANNETT N	26669 WOODLAND AVE	1.1500	162.55
049311008000	FAYARD REV TRUST	26681 WOODLAND AVE	1.1500	162.55
049312001000	D & S PACIFIC PROPERTIES LLC	16651 YOLO AVE	8.5505	1,208.61
049312004000	MAURICIO RICARDO	26638 CAPAY ST	2.3000	325.11
049312005000	KOEPPEN FAM TRUST	26662 CAPAY ST	1.1500	162.55
049312006000	MAST TRUST	26678 CAPAY ST	1.1500	162.55
049312007000	KINTER JAMES	16867 YOLO AVE	8.5505	1,208.61
049313001000	MILLS FAM TRUST	26709 WOODLAND AVE	2.3000	325.11
049313002000	MILLS SCOTT A & CAROL R	16825 BONYNGE ST	1.1500	162.55
049313003000	JOHNSON WENDY NICOLE	26733 WOODLAND AVE	1.1500	162.55
049313004000	CMC-CON PROPERTIES LLC	26745 WOODLAND AVE	2.3000	325.11
049313006000	AYALA REV TRUST	26777 WOODLAND AVE	1.1500	162.55
049313007000	FOSTINE 2010 TRUST	26785 WOODLAND AVE	1.1500	162.55
049313008000	STEPHENS MICHAEL J & SHERRIL	16824 WINTERS ST	1.1500	162.55
049313009000	CABILLO ALEXANDER ORDENESA V	26757 WOODLAND AVE	1.1500	162.55
049313010000	AYALA REV TRUST	26769 WOODLAND AVE	1.1500	162.55
049314001000	JOHNSON TIFFANY	26710 CAPAY ST	1.1500	162.55
049314002000	CUNNINGHAM RANDOLPH JACOB	26732 CAPAY ST	1.1500	162.55
049314003000	MILLS MONTE S	26744 CAPAY ST	1.1500	162.55
049314004000	MARLER BRIAN S JR & SHELBY M	26768 CAPAY ST	1.1500	162.55
049321002000	YOLO COUNTY OF	26964 WOODLAND AVE	6.2813	887.86
049321003000	ESPARTO COMMUNITY SERV DIST		0.1540	21.77
049321005000	HUIE 2003 SURV TRUST	26926 WOODLAND AVE	6.2813	887.86
049322002000	SEGURA RAMON	26939 WOODLAND AVE	1.1500	162.55
049322003000	KISAMORE DENNIS C & TERESA A	26951 WOODLAND AVE	1.1500	162.55
049322004000	LOPEZ KEVIN H & DONNA R	26963 WOODLAND AVE	1.1500	162.55
049322005000	ESPARTO COMMUNITY SERV DIST	26981 WOODLAND AVE	0.1540	21.77
049322006000	KASBERGEN FOUNDATION LP	16815 MATTIE ST	2.3000	325.11
049322007000	CORONADO GONZALO HERNANDEZ	26927 WOODLAND AVE	1.1500	162.55
049323001000	GEE DOUG	16853 MATTIE ST	1.1500	162.55
049323002000	RIVERA JESUS & MARIA G	26914 CAPAY ST	1.1500	162.55
049323003000	FLORES MARGARITA A LE ETAL	26926 CAPAY ST	1.1500	162.55
049323004000	LOPEZ-HUERTA JOSE	26938 CAPAY ST	1.1500	162.55
049323007000	MORENO JORGE	26982 CAPAY ST	1.1500	162.55
049323008000	BERMUDEZ MIGUEL JR	16870 ALPHA ST	1.1500	162.55
049323009000	CADDICK DANE E & PATRICIA H	26946 CAPAY ST	2.3000	325.11
049323010000	THIBAUT REV TRUST	26966 CAPAY ST	2.3000	325.11
049324001000	TRUJILLO RAFAEL & LYDIA	16871 WINTERS ST	1.1500	162.55
049324002000	WEAVER 2018 REV TRUST	26818 CAPAY ST	1.1500	162.55
049324003000	WARDE MICHAEL P & TERESA B	26826 CAPAY ST	0.1540	21.77
049324004000	WARDE MICHAEL P & TERESA B	26838 CAPAY ST	2.3000	325.11
049324008000	ROBINETT DONALD E	26878 CAPAY ST	2.3000	325.11
049324009000	FUENTES ERASMO & LUZ TERESA	26846 CAPAY ST	1.1500	162.55
049324010000	AVILA GUSTAVO DELGADO	26854 CAPAY ST	1.1500	162.55
049325006000	VELOZ MARGARITA ETAL	26849 WOODLAND AVE	1.1500	162.55
049325007000	TOVAR JT LIV TRUST	26825 WOODLAND AVE	1.4314	202.33
049325008000	CHAVEZ DANIEL A	26837 WOODLAND AVE	1.1500	162.55

**Esparto Fire Protection District
Fire Protection and Emergency Response Services Assessment
Assessment Roll 2023-2024**

Assessment Number & Assessor Parcel Number	Owner Name(s)	Site Address	ESFE Units	Assessment
049325009000	MURPHY RICHARD A & DOROTHY A	26857 WOODLAND AVE	2.3000	325.11
049325011000	ESTRELLA JOSE DE JESUS & NATALIE	16808 MATTIE ST	1.1500	162.55
049325013000	CASE FAM TRUST	26869 WOODLAND AVE	2.3000	325.11
049325014000	SEGURA JOSE MANUEL	26817 WOODLAND AVE	1.1500	162.55
049325015000	CMC-CON PROPERTIES LLC	16809 WINTERS ST	2.3000	325.11
049326001000	GAMINO CELESTINO	16801 ALPHA ST	1.1500	162.55
049326002000	WILLIAMS TAMBRA & PAUL	16827 ALPHA ST	1.1500	162.55
049326003000	BLAKE 2015 FAM REV TRUST-BYPASS TRUST	16833 ALPHA ST	1.1500	162.55
049326004000	SILVA OMAR R & ANNA M	16849 ALPHA ST	1.1500	162.55
049326005000	DOBBINS LAWRENCE L & PATSY L	16861 ALPHA ST	1.1500	162.55
049326006000	PULLEN RONALD D & PAULENE A	16875 ALPHA ST	1.1500	162.55
049326009000	VALADEZ JOSE A	16917 ALPHA ST	2.3000	325.11
049331001000	MARTINEZ JOSEPH F	26815 CAPAY ST	1.1500	162.55
049331002000	JOHNSON TRUST	26835 CAPAY ST	1.1500	162.55
049331003000	PICKENS EDWARD J & BETTY R TR	26851 CAPAY ST	0.1540	21.77
049331004000	PICKENS EDWARD J & BETTY R TR	26873 CAPAY ST	1.1500	162.55
049331005000	FERREIRA ROSA	16910 MATTIE ST	1.1500	162.55
049332001000	PEARSON STACY	16955 WINTERS ST	1.1500	162.55
049332002000	THOMAS LAURA	26806 GRAFTON ST	1.1500	162.55
049332003000	ROATH FAM TRUST	26834 GRAFTON ST	1.1500	162.55
049332004000	GOEMAN JEFFREY D ROBIN L	26846 GRAFTON ST	1.1500	162.55
049332005000	HERNANDEZ SERGIO ALAMO	26858 GRAFTON ST	1.1500	162.55
049332006000	ALGER THOMAS I JR	26870 GRAFTON ST	1.1500	162.55
049332007000	TUNSTALL RICHARD DEAN	16956 MATTIE ST	1.1500	162.55
049332008000	JIMENEZ EMILIO C & OTILIA G	16972 MATTIE ST	1.1500	162.55
049333001000	ROATH FAM TRUST	26813 GRAFTON ST	1.1500	162.55
049333002000	VIDALES PEDRO	26829 GRAFTON ST	2.3000	325.11
049333003000	GEORGE SCOTT E	26845 GRAFTON ST	1.1500	162.55
049333004000	MEDINA JESUS DE JESUS SANTOS	26853 GRAFTON ST	1.1500	162.55
049333005000	ROBLES BENJAMIN V & SOCORRO R	26861 GRAFTON ST	2.3000	325.11
049333006000	ANGUAY KAREN	26877 GRAFTON ST	1.1500	162.55
049333007000	LIRA RAUL C & MARIA G	17014 MATTIE ST	1.1500	162.55
049334001000	GOEMAN ANDREW	17053 WINTERS ST	1.1500	162.55
049334002000	ARELLANO ABRAHAM M & MYRELLA G	17067 WINTERS ST	1.1500	162.55
049334003000	COLEMAN HARVEY E	26830 MADISON ST	1.1500	162.55
049334004000	GRAHAM STEVEN & CYNTHIA	26842 MADISON ST	1.1500	162.55
049334005000	MARQUEZ CARLOS	26854 MADISON ST	1.1500	162.55
049334006000	COX WILLIAM CHARLES & DUONG CHAN MIN	26862 MADISON ST	1.1500	162.55
049334007000	DALE DARLA D	26874 MADISON ST	2.3000	325.11
049334008000	MONTES MARIO ETAL	17060 MATTIE ST	1.1500	162.55
049335002000	MURILLO OMAR	17059 MATTIE ST	1.1500	162.55
049335003000	STANPHILL BARBARA ANN	26910 MADISON ST	1.1500	162.55
049335005000	ALATORRE JOSE	26942 MADISON ST	1.1500	162.55
049335006000	QUIROZ RAFAEL	26954 MADISON ST	1.1500	162.55
049335007000	LAWRENCE CURTIS	26960 MADISON ST	1.1500	162.55
049335008000	SMITH MICHAEL GLEN	17054 ALPHA ST	1.1500	162.55
049335009000	CALZADA CESAR D	17068 ALPHA ST	2.3000	325.11
049335010000	SARABIA-TOLEDO JOSE	26972 MADISON ST	1.1500	162.55
049335011000	BRAINARD JOSEPH	17045 MATTIE ST	1.1500	162.55
049335013000	LINDSEY MATTHEW D & ELAINE D	26928 MADISON ST	1.1500	162.55
049336001000	VALTIERRA CANDY L	17017 MATTIE ST	1.1500	162.55
049336002000	SCHWENGER LIV TRUST	26919 GRAFTON ST	1.1500	162.55
049336003000	GODINA RUTILIO C	17023 MATTIE ST	1.1500	162.55
049336004000	MULLER 2019 REV TRUST	26931 GRAFTON ST	1.1500	162.55
049336005000	MERINO FABIAN	26943 GRAFTON ST	1.1500	162.55
049336006000	BENITEZ DANIEL A & PAULINE E	26955 GRAFTON ST	1.1500	162.55
049336007000	ALVARADO JUAN & LINDA	26967 GRAFTON ST	1.1500	162.55

**Esparto Fire Protection District
Fire Protection and Emergency Response Services Assessment
Assessment Roll 2023-2024**

Assessment Number & Assessor			ESFE	Assessment
Parcel Number	Owner Name(s)	Site Address	Units	
049336008000	GUZMAN EFRAIN	17032 ALPHA ST	1.1500	162.55
049336009000	MIRANDA GILBERTO ETAL	17018 ALPHA ST	1.1500	162.55
049336010000	PULIDO PRISCELLA	26975 GRAFTON ST	1.1500	162.55
049337004000	GUERRERO JOSE SOTELO	26984 GRAFTON ST	1.1500	162.55
049337005000	DOBSON 2013 REV TRUST	16980 ALPHA ST	2.3000	325.11
049337006000	FIGUEROA JOSE ROSARIO	26960 GRAFTON ST	1.1500	162.55
049337007000	SALAS HERIBERTO R & MARIA G	26972 GRAFTON ST	1.1500	162.55
049337008000	JOHNSON CHAD	16959 MATTIE ST	1.1500	162.55
049337009000	JOHNSON JASON & TIFFANY	26912 GRAFTON ST	1.1500	162.55
049337010000	SULLIVAN SHERYL D	26936 GRAFTON ST	1.1500	162.55
049337011000	GOVERS CLIFFORD CHRISTOPHER & SHERRI LYNN	26948 GRAFTON ST	1.1500	162.55
049338001000	GONZALEZ MIGUEL JR & SUSAN E	16911 MATTIE ST	1.1500	162.55
049338002000	ARELLANO FAM TRUST	16935 MATTIE ST	1.1500	162.55
049338003000	ENOS MARY M	26935 CAPAY ST	1.1500	162.55
049338004000	THICH-CHU FAM TRUST	26949 CAPAY ST	2.3000	325.11
049338005000	VARGAS NANCY MARICELA	26963 CAPAY ST	1.1500	162.55
049338006000	FIGUEROA JOSE G	26973 CAPAY ST	1.1500	162.55
049338009000	RUST JAMES B	16912 ALPHA ST	1.1500	162.55
049341003000	MCNAMARA TRACY	26833 MADISON ST	1.1500	162.55
049341004000	APARICIO FERMIN ETAL	26841 MADISON ST	1.1500	162.55
049341005000	CARDENAS JOSE R	26849 MADISON ST	1.1500	162.55
049341006000	KUHS GINGER & STEVEN C	26857 MADISON ST	2.3000	325.11
049341008000	MCNAMARA ANNA	26809 MADISON ST	1.1500	162.55
049341009000	R&E ENTERPRISE LLC	26821 MADISON ST	2.3000	325.11
049341010000	BEAUCHAMP JOSEPH	17130 MATTIE ST	1.1500	162.55
049341011000	DUGGAN ROBERT J & CONSTANCE L	17116 MATTIE ST	1.1500	162.55
049342001000	HALL THOMAS L & SHIRLEY A	26820 PLAINFIELD ST	1.1500	162.55
049342002000	ALARCON MARCUS	26832 PLAINFIELD ST	1.1500	162.55
049342003000	STOTTS JOHN F & KELLY	26844 PLAINFIELD ST	1.1500	162.55
049342004000	ANGEL RAMIRO MURILLO	26852 PLAINFIELD ST	2.3000	325.11
049342005000	PEREZ RALPH	26860 PLAINFIELD ST	1.1500	162.55
049342007000	GORDON FAM TRUST	17150 MATTIE ST	2.3000	325.11
049342008000	BELSHAW FAM REV TRUST	17162 MATTIE ST	1.1500	162.55
049343001000	CRINER STEPHEN T	26811 PLAINFIELD ST	1.1500	162.55
049343002000	GALVAN BERNARDO & MELENDREZ JUANA	26823 PLAINFIELD ST	1.1500	162.55
049343004000	AYALA JAVIER	26851 PLAINFIELD ST	1.1500	162.55
049343005000	WHEELER STEVE	26859 PLAINFIELD ST	1.1500	162.55
049343006000	LOPEZ JEFFREY ALLEN & NATASHA CATRIN	26867 PLAINFIELD ST	1.1500	162.55
049343007000	HAMILTON PHILLIP	26883 PLAINFIELD ST	1.1500	162.55
049343008000	CONRIQUE MIGUEL	26909 PLAINFIELD ST	1.1500	162.55
049343009000	MIRANDA JOSE & ELVIRA	26917 PLAINFIELD ST	1.1500	162.55
049343010000	SANTANA RUBEN BERNAL	26925 PLAINFIELD ST	1.1500	162.55
049343011000	HOLCOMB STEVE F & NANCY G	26939 PLAINFIELD ST	1.1500	162.55
049343012000	MULLER SARA & JACOB	26947 PLAINFIELD ST	1.1500	162.55
049343013000	FRANKLIN NORMAN & MCKINNEY CATHERINE	26961 PLAINFIELD ST	1.1500	162.55
049343014000	PANTOJA DAVID B & ELISA	26971 PLAINFIELD ST	1.1500	162.55
049343015000	ARELLANO ABRAHAM & MYRELLA	26979 PLAINFIELD ST	1.1500	162.55
049343016000	GEACH CAMERON T & JANETTE M	26843 PLAINFIELD ST	1.1500	162.55
049343017000	COOPER BENJAMIN G	26831 PLAINFIELD ST	1.1500	162.55
049344001000	CAMPOS SAUL HERNANDEZ	17167 MATTIE ST	1.1500	162.55
049344002000	TAKHAR GURMIT K & NIRANJAN	26922 PLAINFIELD ST	1.1500	162.55
049344003000	GARRISON DAN & KATHLEEN M	26930 PLAINFIELD ST	1.1500	162.55
049344004000	BATES TRUST	26944 PLAINFIELD ST	1.1500	162.55
049344005000	REFSLAND LEO & CESSNA	26958 PLAINFIELD ST	1.1500	162.55
049344007000	LOPEZ ANTHONY H	17160 ALPHA ST	1.1500	162.55
049344008000	CARRILLO PEDRO ALFARO	26962 PLAINFIELD ST	1.1500	162.55
049344009000	JENKINS JONATHAN M	26974 PLAINFIELD ST	1.1500	162.55

**Esparto Fire Protection District
Fire Protection and Emergency Response Services Assessment
Assessment Roll 2023-2024**

Assessment Number & Assessor			ESFE	Assessment
Parcel Number	Owner Name(s)	Site Address	Units	
049345001000	ACTON WAYNE T & LORAINÉ	26913 MADISON ST	1.1500	162.55
049345002000	HARDY SHAUNA	26921 MADISON ST	1.1500	162.55
049345003000	CHAMBERS VESTA LEE	26933 MADISON ST	1.1500	162.55
049345004000	MURILLO SALVADOR MORENO	26945 MADISON ST	1.1500	162.55
049345005000	ZENTNER WENDY F	26957 MADISON ST	1.1500	162.55
049345006000	PATTON KEVIN J	26965 MADISON ST	1.1500	162.55
049345007000	LOPEZ ANGELITA & HILTON ROBERT C	26977 MADISON ST	1.1500	162.55
049351005000	ESPARTO UNIFIED SCHOOL DIST	26574 PLAINFIELD ST	17.1010	2,417.23
049352001000	ESPARTO UNIFIED SCHOOL DIST	26675 PLAINFIELD ST	8.5505	1,208.61
049353002000	LOPEZ PAUL R	26753 PLAINFIELD ST	1.1500	162.55
049353004000	CRIDER FRANCES	26775 PLAINFIELD ST	1.1500	162.55
049353005000	LEDO EUGENE M & CARRIE H	26761 PLAINFIELD ST	1.1500	162.55
049353006000	GAGLIARDI EMIL T JR ETAL	26767 PLAINFIELD PL	1.1500	162.55
049353007000	MURATALLA LILIANA	26725 PLAINFIELD ST	1.1500	162.55
049353008000	SOTELO ADAN RODRIGUEZ & YERI G	26729 PLAINFIELD ST	1.1500	162.55
049353009000	BOONE TRUST	26733 PLAINFIELD ST	1.1500	162.55
049353010000	QUIROZ RAFAEL & LUCY B	26737 PLAINFIELD ST	1.1500	162.55
049361004000	GIUSTO PAUL A	913 MADISON ST	0.1540	21.77
049361005000	SCHAUPP CHARLES EUGENE	17114 YOLO AVE	1.1500	162.55
049361006000	SCHAUPP CHARLES	617 YOLO ST	0.1540	21.77
049361007000	STAGGERFIRE TRUST		0.1540	21.77
049361008000	BOTELLO TERESA M	17145 FREMONT ST	1.1500	162.55
049361009000	ALCARAZ HELIO	26521 MADISON ST	1.1500	162.55
049361010000	OBERMUELLER KURT	26533 MADISON ST	1.1500	162.55
049362003000	STAGGERFIRE TRUST	26574 PLAINFIELD ST	6.2813	887.86
049362005000	ANDERSON AMY	26530 PLAINFIELD ST	2.3000	325.11
049362006000	PENSCO TRUST COMPANY CUSTODIAN	26512 PLAINFIELD ST	2.3000	325.11
049362007000	FOWLER SURV TRUST	26520 PLAINFIELD ST	2.3000	325.11
049362008000	MONTES JOSE R & TASHA	26538 PLAINFIELD ST	2.3000	325.11
049362009000	THOMAS FAM TRUST	26546 PLAINFIELD ST	2.3000	325.11
049363001000	WILLIAM LIV TRUST	26521 PLAINFIELD ST	1.1500	162.55
049363002000	STAGGERFIRE TRUST	26555 PLAINFIELD ST	6.2813	887.86
049364001000	YOLO CO HOUSING AUTHORITY	26410 PLAINFIELD ST	1.9378	273.91
049364003000	BURTON VAN DE WATER FAM TRUST	17150 FREMONT ST	0.1540	21.77
049364004000	BURTON VAN DE WATER FAM TRUST	17160 FREMONT ST	0.1540	21.77
049365001000	ESPARTO BROADBAND INC	17214 FREMONT ST	2.2541	318.62
049366001000	YOLO CO HOUSING AUTHORITY	26417 MADISON ST	5.7256	809.31
049366005000	HERNANDEZ J ROSARIO & MARIA	17120 MADISON ST	1.1500	162.55
049366007000	BERMUDEZ MIGUEL & RAQUEL	26461 MADISON ST	1.1500	162.55
049371001000	YOLO COUNTY OF		0.0000	0.00
049371002000	RAPER DAVID O & DEBORAH A	17121 OMEGA ST	1.1500	162.55
049371003000	DE JACOBO FIDELIA OSORIO	26225 MADISON ST	1.1500	162.55
049371004000	GARZA MIREYA & ROGELIO JR	26239 MADISON ST	2.3000	325.11
049371005000	VANNUCCI WILLIAM J & STACEY A	26251 MADISON ST	1.1500	162.55
049371006000	CORONA SUSANA	17118 ORLEANS ST	1.1500	162.55
049372001000	YOLO COUNTY OF		0.0000	0.00
049372002000	DWYER JOHN H & DEBRA	17155 OMEGA ST	1.1500	162.55
049372003000	ZENTNER BURNELL H & DIANA L	26228 PLAINFIELD ST	1.1500	162.55
049372004000	PLECHATY DANIEL	26240 PLAINFIELD ST	1.1500	162.55
049372005000	RAMIREZ ARMANDO VERA	26256 PLAINFIELD ST	1.1500	162.55
049372012000	WOOLCOTT KARIN M	17164 ORLEANS ST	1.1500	162.55
049372013000	OGDEN DANIEL	17152 ORLEANS ST	1.1500	162.55
049373001000	ESPARTO BROADBAND INC		0.1540	21.77
049374001000	TRUJILLO RIGOBERTO & MARGARITA	17158 ORLEANS ST	1.1500	162.55
049374002000	GONZALEZ ELVA Y	26322 PLAINFIELD ST	1.1500	162.55
049374003000	GORDON ERIC	26334 PLAINFIELD ST	1.1500	162.55
049374004000	DELGADO LIV TRUST	26346 PLAINFIELD ST	1.1500	162.55

**Esparto Fire Protection District
Fire Protection and Emergency Response Services Assessment
Assessment Roll 2023-2024**

Assessment Number & Assessor Parcel Number	Owner Name(s)	Site Address	ESFE Units	Assessment
049374005000	WATTERSON JEFF & RHONDA	26362 PLAINFIELD ST	1.1500	162.55
049374007000	R & E ENTERPRISE LLC		2.3000	325.11
049374008000	MILES RYAN ANDREW	26378 PLAINFIELD ST	1.1500	162.55
049375002000	MELENDREZ MANUEL & EDELIA	26331 MADISON ST	1.1500	162.55
049375003000	JAURIGE LINA & JOHN JOSE JR	26343 MADISON ST	1.1500	162.55
049375004000	ESTRADA MIGUEL A & ANA RUTH	26355 MADISON ST	2.3000	325.11
049375005000	ESPARZA JESUS P	26367 MADISON ST	1.1500	162.55
049375007000	MONTES ADRIAN E	26315 MADISON ST	1.1500	162.55
049375008000	THARP WILLIAM & DEBORAH	17141 ORLEANS ST	1.1500	162.55
049375009000	THARP FAM TRUST	26375 MADISON ST	1.1500	162.55
049375010000	THARP FAM TRUST		0.1540	21.77
049384001000	OBADI MUNEEER MUTHANNA ETAL	17343 FREMONT ST	8.5505	1,208.61
049384004000	YOLO MASONIC HALL ASSOCIATION	17309 FREMONT ST	8.5505	1,208.61
049384005000	YOCHA DEHE WINTUN NATION		0.1540	21.77
049385001000	SULLIVAN FAM TRUST	26380 REDWING ST	1.1500	162.55
049385002000	CONTRERAS MANUEL & KARINA	26400 REDWING ST	1.1500	162.55
049385003000	CRERAR KRISTINA MARIA & COLIN CHRISTOPHER	26414 REDWING ST	1.1500	162.55
049385004000	BENEDICT FAM TRUST	26426 REDWING ST	1.1500	162.55
049385005000	DOYLE RICHARD H & CHARLOTTE A	26440 REDWING ST	1.1500	162.55
049385006000	ENOS FAM TRUST	26452 REDWING ST	1.1500	162.55
049385007000	ELLSWORTH RONALD JAMES	26466 REDWING ST	1.1500	162.55
049385008000	HARRINGTON MARK J & DURSTELER DIXIE L	17230 FREMONT ST	1.1500	162.55
049385009000	SIMPSON MARY L	17268 FREMONT ST	1.1500	162.55
049385010000	SIMPSON MARY	26463 REDWING ST	0.1540	21.77
049385011000	WHITLEY GARY	26451 REDWING ST	1.1500	162.55
049385012000	HAYES ROBERT V & JOANN M	26439 REDWING ST	1.1500	162.55
049385013000	MARIN PASQUAL R & LORRIE R	26425 REDWING ST	1.1500	162.55
049385014000	WILKEY PAUL M & ROBERTA J	26415 REDWING ST	1.1500	162.55
049385015000	ROBLES SOCORRO R & BENJAMIN V	26397 REDWING ST	1.1500	162.55
049385016000	MACCHIETTO BRANDA	26377 REDWING ST	1.1500	162.55
049385017000	GUTIERREZ JOSE J & HEIDI	26378 ROBIN ST	1.1500	162.55
049385018000	SARTIN DAVID	26398 ROBIN ST	1.1500	162.55
049385019000	HARRINGTON FAM TRUST	26412 ROBIN ST	1.1500	162.55
049385020000	VALDEZ RAUL & MEGAN A	26424 ROBIN ST	1.1500	162.55
049385021000	HAYES MICHAEL R	26438 ROBIN ST	1.1500	162.55
049385022000	FULLERTON REV TRUST	26450 ROBIN ST	1.1500	162.55
049385023000	RONCHETTO LAINE R	26460 ROBIN ST	1.1500	162.55
049385024000	HARMON KENTON & RENEE	26476 ROBIN ST	1.1500	162.55
049385025000	CALZADA SANTIAGO D	17316 FREMONT ST	1.1500	162.55
049385026000	FIGUEROA LETICIA	26465 ROBIN ST	1.1500	162.55
049385027000	RALPH RICHARD D & SHARON L	26453 ROBIN ST	1.1500	162.55
049385028000	GARCIA SALVADOR G	26437 ROBIN ST	1.1500	162.55
049385029000	OBERMUELLER FAM TRUST	26421 ROBIN ST	1.1500	162.55
049385030000	LEBLANC REBECCA L	26411 ROBIN ST	1.1500	162.55
049385031000	LINDEMAN RB TRUST	26391 ROBIN ST	1.1500	162.55
049385032000	MOLINA MIGUEL & LILIA	26448 CR 21A	8.5505	1,208.61
049385033000	CENTRAL BANK NATL ASSOC	17350 FREMONT ST	2.2541	318.62
049385034000	LEICHLITER STEVEN & VICKI	26358 REDWING ST	1.1500	162.55
049385035000	KELLY VINCENT	26350 REDWING ST	1.1500	162.55
049385036000	CALZADA ELEUTERIO & ALICIA	26355 REDWING ST	1.1500	162.55
049385037000	SMITH ROBERT M & ESTELA M	26361 REDWING ST	1.1500	162.55
049385038000	FLORES ELIZABETH VILLEGAS	26360 ROBIN ST	1.1500	162.55
049385039000	BARAJAS FRANCISCO JR	26352 ROBIN ST	1.1500	162.55
049385040000	JONES MICHAEL O & AMY L	26357 ROBIN ST	1.1500	162.55
049385041000	VELAZQUEZ MARTHA ANAYA	26365 ROBIN ST	1.1500	162.55
049390002000	HARRISON FAM TRUST	25107 MAIN ST	1.4578	206.06
049390005000	OKANE MICHAEL D & DONNA T	25085 HWY 16	1.4257	201.52

**Esparto Fire Protection District
Fire Protection and Emergency Response Services Assessment
Assessment Roll 2023-2024**

Assessment Number & Assessor			ESFE	Assessment
Parcel Number	Owner Name(s)	Site Address	Units	
049390007000	TACKETT PAULA LORENZO	25027 MAIN ST	0.1694	23.94
049390008000	TACKETT PAULA LORENZO	25051 MAIN ST	0.1694	23.94
049390009000	CRANSTON RUTH E	25073 MAIN ST	2.3147	327.18
049400001000	NAVARRO JONATHAN C	25070 MAIN ST	1.6506	233.31
049400002000	CAPAY VALLEY PROPERTIES LLC	25020 MAIN ST	1.2650	178.81
049400003000	LERMA RUBEN S & MARIA GARCIA	25100 MAIN ST	6.9094	976.64
049400004000	LERMA JUAN M & MARGARITA	25120 MAIN ST	1.2650	178.81
049410001000	AZZOLINO JOSEPH W & DORI	24842 MAIN ST	2.6907	380.33
049410002000	BRECKENRIDGE WILLIAM R	15980 MEFFORD LN	1.2650	178.81
049410003000	HENSON DARREL B ETAL	24930 MAIN ST	1.2650	178.81
049410004000	VIGIL DANIEL & SIGNORELLO ROSE MARY	24950 MAIN ST	1.2650	178.81
049410010000	DUTTON JOE E	24970 MAIN ST	1.2650	178.81
049410011000	STURGEON FAM REV TRUST	24960 MAIN ST	1.2650	178.81
049410013000	OROSCO ARNULFO K	24980 MAIN ST	1.5863	224.22
049410014000	NAVARRO JONATHAN C	15900 CR 85	0.1694	23.94
049420002000	KIPKER 2011 REV TRUST	16016 MEFFORD LN	1.2650	178.81
049420003000	ALDAY JOSEPHINE O & EUGENE L	16043 MEFFORD LN	1.2971	183.35
049420004000	RAY ROBBY FREEMAN	16015 MEFFORD LN	1.5745	222.56
049420005000	TACKETT PAULA LORENZO	24931 MAIN ST	1.2650	178.81
049420006000	TACKETT JERRY & PAULA	16030 ALDRICH RD	1.2650	178.81
049420007000	TACKETT JERRY & PAULA	16074 ALDRICH DR	1.4578	206.06
049420009000	KIPKER RAY S & GERTRUDE E		0.1694	23.94
049420010000	WALTERS EDWARD NICHOLAS	24815 MAIN ST	1.2971	183.35
049420011000	ROAD TRIP BAR & GRILL LLC	24989 HWY 16	9.4055	1,329.47
049431001000	SAX WAYNE N	24560 CACHE ST	1.2650	178.81
049431002000	ROWE CHARLES W & JOAN DEAN	24580 CACHE ST	1.2650	178.81
049432004000	WOOD DAVID E		0.1694	23.94
049432006000	EL ROBLAR LLC	15370 CR 85	0.0000	0.00
049432007000	POWERS THERESA	15980 LANG AVE	1.3935	196.97
049432008000	STRONG RUSSELL	15985 1ST ST	1.2650	178.81
049432009000	WOOD DAVID E	24610 CACHE ST	0.1694	23.94
049432013000	MCELROY GILDA	24630 CACHE ST	1.2650	178.81
049432014000	WOOD DAVID E		1.2688	179.34
049434001000	NG-CHAN LAI KWAN PAULINE	24610 MAIN ST	1.2650	178.81
049434002000	RAY BOBBY DALE	24615 CACHE ST	1.2650	178.81
049434003000	RUGGENBERG SHERI & SHAWN	24640 MAIN ST	1.2650	178.81
049434004000	VALLERY-LEYX & LEYX LIV TRUST	24660 MAIN ST	1.2650	178.81
049435001000	KAFOUROS FAM TRUST ETAL		0.1694	23.94
049435002000	MCMENOMEY BRIAN	24580 MAIN ST	1.2650	178.81
049436001000	SHAW NANCY E	24495 MAIN ST	1.2650	178.81
049437001000	MCCAULEY ARTHUR		0.1694	23.94
049437002000	BRECKENRIDGE BILL		0.1694	23.94
049437003000	KAROUTAS ZACHARY A & MARIA	24611 MAIN ST	1.2650	178.81
049437008000	BRAMWELL CHASE DYLAN	24753 MAIN ST	1.2650	178.81
049437010000	FARNHAM STEVE & PENNY	24707 MAIN ST	1.2971	183.35
049437012000	GORDON FAM TRUST	24635 MAIN ST	1.2650	178.81
049470002000	KAFOUROS FAM TRUST ETAL		0.1547	21.87
049470003000	VANNUCCI FRED L & MARY P F & VANNUCCI 2004	24469 MAIN ST	8.5877	1,213.87
049470006000	SALONITES SEP PROP TRUST	25181 HWY 16	1.6827	237.85
049470007000	SALONITES SEP PROP TRUST		0.1694	23.94
049470008000	SCHATZ DEREK C	25195 HWY 16	1.5220	215.13
049470012000	MENDES MARY C	16400 CR 85B	1.2650	178.81
049470013000	JIMENEZ ARMANDO HUERTA	16426 CR 85B	1.2650	178.81
049470014000	TRIGALES KEVIN P & COREN B	16454 CR 85B	2.5300	357.62
049470015000	SMITH REV LIV TRUST	16482 CR 85B	0.0000	0.00
049470016000	VANNUCCI FRED L & MARY P F & VANNUCCI 2004	24481 MAIN ST	2.0351	287.66
049470019000	KAFOUROS FAM TRUST ETAL	24540 CACHE ST	1.3202	186.61

**Esparto Fire Protection District
Fire Protection and Emergency Response Services Assessment
Assessment Roll 2023-2024**

**Assessment Number
& Assessor**

Parcel Number	Owner Name(s)	Site Address	ESFE Units	Assessment
049470022000	FRIEDMAN ALAN WAYNE		3.2452	458.71
049470023000	BURLISON HARVEY E & JOANN	16250 CR 85B	2.0361	287.80
049480001000	COUNTRY VILLA ME LLC ETAL	26262 CR 21A	22.4253	3,169.82
049480002000	MULLER JAMES E & JACKQULINE M	26420 CR 21A	1.1500	162.55
049480003000	BROOKS TAMARA J & CHARLES R	26176 CR 21A	1.1500	162.55
049480004000	COUNTRY VILLA ME LLC ETAL	26262 CR 21A	20.5168	2,900.05
049480007000		26262 CR 21A #35	0.0000	0.00
049480008000		26262 CR 21A #36	0.0000	0.00
049480010000		26262 CR 21A #53	0.0000	0.00
049480011000		26262 CR 21A #92	0.0000	0.00
049480012000		26262 CR 21A #34	0.0000	0.00
049480016000		26262 CR 21A #52	0.0000	0.00
049480017000		26262 CR 21A #33	0.0000	0.00
049480018000		26262 CR 21A #12	0.0000	0.00
049480019000		26262 CR 21A #88	0.0000	0.00
049480020000		26262 CR 21A #82	0.0000	0.00
049480021000		26262 CR 21A #44	0.0000	0.00
049480022000		26262 CR 21A #18	0.0000	0.00
049480024000		26262 CR 21A #42	0.0000	0.00
049480025000		26262 CR 21A #2	0.0000	0.00
049480026000		26262 CR 21A #40	0.0000	0.00
049480027000		26262 CR 21A #81	0.0000	0.00
049480028000		26262 CR 21A #25	0.0000	0.00
049480030000		26262 CR 21A #23	0.0000	0.00
049480031000		26262 CR 21A #83	0.0000	0.00
049480032000		26262 CR 21A #49	0.0000	0.00
049480034000		26262 CR 21A #86	0.0000	0.00
049480035000		26262 CR 21A #87	0.0000	0.00
049480036000		26262 CR 21A #43	0.0000	0.00
049480037000		26262 CR 21A #41	0.0000	0.00
049480038000		26262 CR 21A #89	0.0000	0.00
049480039000		26262 CR 21A #32	0.0000	0.00
049480040000		26262 CR 21A #63	0.0000	0.00
049480041000		26262 CR 21A #46	0.0000	0.00
049480042000		26262 CR 21A #50	0.0000	0.00
049480043000		26262 CR 21A #79	0.0000	0.00
049490001000	JUSTICE RICHARD & HORTENSIA	26146 WOODLAND AVE	1.1500	162.55
049490002000	OLIVEROS ROGELIO MONDRAGON ETAL	26136 WOODLAND AVE	1.1500	162.55
049490003000	BAILEY JUSTIN M	26124 WOODLAND AVE	1.1500	162.55
049490004000	LENERT LIV TRUST	26110 WOODLAND AVE	1.1500	162.55
049490005000	BARSOTTI FREEMAN & CAROL	26100 WOODLAND AVE	1.1500	162.55
049490006000	KERSHAW STEPHEN T & KATHALEEN O	26038 WOODLAND AVE	1.1500	162.55
049490007000	RICO RICARDO CISNEROS	26026 WOODLAND AVE	1.1500	162.55
049490008000	MUNOZ TANYA	26014 WOODLAND AVE	1.1500	162.55
049490009000	MADIGAN JOHN M & BILLIE J	26006 WOODLAND AVE	1.1500	162.55
049490010000	CHAVEZ VERONICA CANO	26000 WOODLAND AVE	1.1500	162.55
049490011000	2017 2 IH BORROWER LP	16800 SEBASTIAN WAY	1.1500	162.55
049490012000	GONZALEZ MARIA	16810 SEBASTIAN WAY	1.1500	162.55
049490013000	DRESSLER THOMAS JAMES & ROSA EMELIA	16822 SEBASTIAN WAY	1.1500	162.55
049490014000	SANTANA REYNALDO & GUADALUPE M	16834 SEBASTIAN WAY	1.1500	162.55
049490015000	2017-1 IH BORROWER LP	16842 SEBASTIAN WAY	1.1500	162.55
049490016000	CHAVEZ FEDERICO T	16854 SEBASTIAN WAY	1.1500	162.55
049490017000	HERNANDEZ ROBERTO S	16862 SEBASTIAN WAY	1.1500	162.55
049490018000	ROJAS MARCOS	16904 SEBASTIAN WAY	1.1500	162.55
049490019000	SANTIAGO MATILDE	16912 SEBASTIAN WAY	1.1500	162.55
049490020000	CENTERS EMILY	16924 SEBASTIAN WAY	1.1500	162.55
049490021000	JAURIGUI & BEAS 2018 TRUST	26001 ANDREW DR	1.1500	162.55

**Esparto Fire Protection District
Fire Protection and Emergency Response Services Assessment
Assessment Roll 2023-2024**

Assessment Number & Assessor Parcel Number	Owner Name(s)	Site Address	ESFE Units	Assessment
049490022000	SCOTT RICKY A & KIMBERLY ANN	26013 ANDREW DR	1.1500	162.55
049490023000	AGUILAR RUBEN CRUZ JR	26021 ANDREW DR	1.1500	162.55
049490024000	THARP DERRICK	26035 ANDREW DR	1.1500	162.55
049490025000	CHERVINSKAS DANIEL	26002 GRAFTON ST	1.1500	162.55
049490026000	WILKISON 2019 REV TRUST	26012 GRAFTON ST	1.1500	162.55
049490027000	GARCIA EDUARDO & OFELIA	26020 GRAFTON ST	1.1500	162.55
049490028000	RODRIGUEZ ALBERTO	26034 GRAFTON ST	1.1500	162.55
049490029000	CALDERON ALICIA	26112 GRAFTON ST	1.1500	162.55
049490030000	GILLHAM FAM REV TRUST	26122 GRAFTON ST	1.1500	162.55
049490031000	GREEN KYLE & FRANCES	26134 GRAFTON ST	1.1500	162.55
049490032000	EQUINOA TRISHA & CHRISTOPHER	26148 GRAFTON ST	1.1500	162.55
049490033000	HERNANDEZ SANDRA & FERMIN	16940 OMEGA ST	1.1500	162.55
049490034000	MARTINEZ JESSE M	16928 OMEGA ST	1.1500	162.55
049490035000	VILLEGAS ISMEAL	16920 OMEGA ST	1.1500	162.55
049490036000	ZINDELL MICHAEL K & MARY A	16908 OMEGA ST	1.1500	162.55
049490037000	MADRIGAL RAFAEL OCHOA & OCHOA ESTHER	16866 OMEGA ST	1.1500	162.55
049490038000	ALVAREZ MARTIN A & ARMIDA U	16858 OMEGA ST	1.1500	162.55
049490039000	GIUSTI CHRISTOPHER M	16848 OMEGA ST	1.1500	162.55
049490040000	SOTO FLORENTINO PEREZ	16836 OMEGA ST	1.1500	162.55
049490041000	DALL STEPHEN R & BARBARA J	16824 OMEGA ST	1.1500	162.55
049490042000	VELOZ JESUS & MARGARITA	16812 OMEGA ST	1.1500	162.55
049490043000	26127 WOODLAND AVENUE LLC	26127 WOODLAND AVE	1.1500	162.55
049490044000	C F BARSOTTI HOLDINGS LLC	26115 WOODLAND AVE	1.1500	162.55
049490045000	KAAKE DEBRA L	26103 WOODLAND AVE	1.1500	162.55
049490046000	HEIL JEFFREY J & HEIL JEFFREY J & PHILIP W & TH	26041 WOODLAND AVE	1.1500	162.55
049490047000	HARMON KENTON R & RENEE	26029 WOODLAND AVE	1.1500	162.55
049490048000	ROME LIV TRUST	16811 SEBASTIAN WAY	1.1500	162.55
049490049000	VALENZUELA TITO N & ANA MARIA	16825 SEBASTIAN WAY	1.1500	162.55
049490050000	RIVERA RAMON & CELIA	16837 SEBASTIAN WAY	1.1500	162.55
049490051000	BOWEN BENJAMIN R	16845 SEBASTIAN WAY	1.1500	162.55
049490052000	MULLINS MELINDA SUE ETAL	16859 SEBASTIAN WAY	1.1500	162.55
049490053000	CONTRERAS GILBERTO	16871 SEBASTIAN WAY	1.1500	162.55
049490054000	SANFILLIPPO THOMAS R	16909 SEBASTIAN WAY	1.1500	162.55
049490055000	SCOTT PIERCE M & TIFFANY R	16906 MICHAEL CT	1.1500	162.55
049490056000	MILLER MARLENE F & MILLER MARLENE F & FAM	16864 MICHAEL CT	1.1500	162.55
049490057000	RONCHETTO REV TRUST	16856 MICHAEL CT	1.1500	162.55
049490058000	ELIZONDO SALVADOR DEL RIO	16850 MICHAEL CT	1.1500	162.55
049490059000	OSIER MARTIN	16832 MICHAEL CT	1.1500	162.55
049490060000	BRACELIN BRENT A & PAMELA J	16839 MICHAEL CT	1.1500	162.55
049490061000	DURST JAMES M & DEBORAH D	16847 MICHAEL CT	1.1500	162.55
049490062000	FESCENMEYER ROBERT A & COLLEEN	16857 MICHAEL CT	1.1500	162.55
049490063000	TADLOCK DEREK L	16869 MICHAEL CT	1.1500	162.55
049490064000	VEGA OSCAR	16911 MICHAEL CT	1.1500	162.55
049490065000	TREAT EVERETT	16921 MICHAEL DR	1.1500	162.55
049490066000	MORELAND JOSEPH SR & MARIANGELA	16929 MICHAEL DR	1.1500	162.55
049490067000	MILLHOLLIN ROXANNE R & LELAND C	16941 MICHAEL DR	1.1500	162.55
049490068000	FULLERTON FRED H & KAREN	25990 GRAFTON ST	1.1500	162.55
049501001000	RIOS JUAN MANUEL & MARTINEZ-RIOS MARICELA	25986 MONROE ST	1.1500	162.55
049501002000	SENKBEIL FAM TRUST	25980 MONROE ST	1.1500	162.55
049501003000	LUNA ANTONIO & ANA	25972 MONROE ST	1.1500	162.55
049501004000	2017-1 IH BORROWER LP	25966 MONROE ST	1.1500	162.55
049501005000	NERI ROBERT EUGENE	25960 MONROE ST	1.1500	162.55
049501006000	MARTINEZ CELERINA & ISMAEL	25954 MONROE ST	1.1500	162.55
049501007000	JACOBO MARIA JOAQUINA	25946 MONROE ST	1.1500	162.55
049501008000	ROSAS ELIA	25945 DUNCAN DR	1.1500	162.55
049501009000	IBARRA SALVADOR & MARIA ELENA	25951 DUNCAN DR	1.1500	162.55
049501010000	MCDONALD JAY R ESTATE OF	25957 DUNCAN DR	1.1500	162.55

**Esparto Fire Protection District
Fire Protection and Emergency Response Services Assessment
Assessment Roll 2023-2024**

Assessment Number & Assessor Parcel Number	Owner Name(s)	Site Address	ESFE Units	Assessment
049501011000	GUIJARRO NESTOR & MARIA D	25963 DUNCAN DR	1.1500	162.55
049501012000	CHAVEZ ISAIAS & BLANCA A	25969 DUNCAN DR	1.1500	162.55
049501013000	REGALADO OFELIA	25975 DUNCAN DR	1.1500	162.55
049501014000	VARGAS MARTIN & ANGELICA	25981 DUNCAN DR	1.1500	162.55
049501015000	GETTER CONRAD II & JANETTE	25987 DUNCAN DR	1.1500	162.55
049502001000	DUARTE JAIME & MARTHA	25984 CRAIG ST	1.1500	162.55
049502002000	LOPEZ DANIEL MONTES	25980 CRAIG ST	1.1500	162.55
049502003000	FLORES CELIA V	25970 CRAIG ST	1.1500	162.55
049502004000	2017-1 IH BORROWER LP	25964 CRAIG ST	1.1500	162.55
049502005000	MACCULLOUGH KYLE N	25958 CRAIG ST	1.1500	162.55
049502006000	GONZALES FAM LIV TRUST	25952 CRAIG ST	1.1500	162.55
049502007000	ELPHICK LUCY E	25944 CRAIG ST	1.1500	162.55
049502008000	JAURIGE-SEGURA ROSEMARIE	25947 MONROE ST	1.1500	162.55
049502009000	BRAVO RAMON & TERESA	25955 MONROE ST	1.1500	162.55
049502010000	LOPEZ JOSE & LEONORILDA	25961 MONROE ST	1.1500	162.55
049502011000	LUNA OCTAVIO & MARGARITA	25967 MONROE ST	1.1500	162.55
049502012000	PIMENTEL ROSAURA CRUZ	25971 MONROE ST	1.1500	162.55
049502013000	JUNEZ ALEJANDRO & JUNES ALEJANDRO	25979 MONROE ST	1.1500	162.55
049502017000	YOLO CO HOUSING AUTHORITY	25983 MONROE ST	0.1540	21.77
049502018000	YOLO CO HOUSING AUTHORITY	25985 MONROE ST	0.1540	21.77
049503001000	TAFOLLA BASILIO	25986 GRAFTON ST	1.1500	162.55
049503002000	LOPEZ ELVA & MARTIN	25980 GRAFTON ST	1.1500	162.55
049503003000	VALERIANO JOSE & MARTHA	25972 GRAFTON ST	1.1500	162.55
049503004000	ORTIZ SERGIO MARTINEZ	25968 GRAFTON ST	1.1500	162.55
049503005000	MENDEZ JESSICA P	25962 GRAFTON ST	1.1500	162.55
049503006000	LEON FRANCISCO & MARIA	25956 GRAFTON ST	1.1500	162.55
049503007000	VALDEZ ROLANDO	25950 GRAFTON ST	1.1500	162.55
049503008000	GONZALEZ PEDRO M CHAVEZ ETAL	25944 GRAFTON ST	1.1500	162.55
049503011000	BUENO TERRIE RUTAN	25953 CRAIG ST	1.1500	162.55
049503012000	MEYER MARY	25957 CRAIG ST	1.1500	162.55
049503013000	TUCKER DOUGLAS A & AYLY L	25963 CRAIG ST	1.1500	162.55
049503014000	HERRERA ALFONSO & ANA	25969 CRAIG ST	1.1500	162.55
049503015000	CHAVEZ JUAN & BLANCA	25973 CRAIG ST	1.1500	162.55
049503016000	LOPEZ RAFAEL & SANDRA	25981 CRAIG ST	1.1500	162.55
049503017000	2015-3 IH2 BORROWER LP	25987 CRAIG ST	1.1500	162.55
049503019000	YOLO CO HOUSING AUTHORITY	25943 CRAIG ST	0.1540	21.77
049503020000	YOLO CO HOUSING AUTHORITY	25945 CRAIG ST	0.1540	21.77
049504003000	CORTES JOSE A & LETICIA	16951 CAMPOS DR	1.1500	162.55
049504004000	YOLO COUNTY OF		0.0000	0.00
049504005000	OCHOA JORGE & MARIA	16915 CAMPOS DR	1.1500	162.55
049504006000	VAZQUEZ JUAN MANUEL ESTRADA	16907 CAMPOS DR	1.1500	162.55
049504007000	2017-1 IH BORROWER LP	16863 CAMPOS DR	1.1500	162.55
049504008000	TORRES GILDARDO & MARIA	16855 CAMPOS DR	1.1500	162.55
049504009000	SANCHEZ MARIO	16843 CAMPOS DR	1.1500	162.55
049504010000	GARCIA LUCIO	16835 CAMPOS DR	1.1500	162.55
049504011000	MENDOZA ALICIA ETAL	16823 CAMPOS DR	1.1500	162.55
049504012000	DAROSA FAM REV LIV TRUST	16811 CAMPOS DR	1.1500	162.55
049504013000	AGUIRRE ALBERTO SR & ROSA E	16801 CAMPOS DR	1.1500	162.55
049504014000	YOLO COUNTY OF		0.1540	21.77
049504016000	YOLO CO HOUSING AUTHORITY	16975 CAMPOS DR	0.1540	21.77
049504017000	YOLO CO HOUSING AUTHORITY	16987 CAMPOS DR	0.1540	21.77
049511001000	GUEVARA RICHARD & LORI	26209 BRUNO CT	1.1500	162.55
049511002000	ARNOLD JANET M	26219 BRUNO CT	1.1500	162.55
049511003000	PRAGASA SHERYLL J	26229 BRUNO CT	1.1500	162.55
049511004000	MCALLISTER RAYMOND & JOY	26224 BRUNO CT	1.1500	162.55
049511005000	AYALA JAVIER S	26212 BRUNO CT	1.1500	162.55
049511006000	NICHOLS MARK E & LYNDA M	16715 OMEGA ST	1.1500	162.55

**Esparto Fire Protection District
Fire Protection and Emergency Response Services Assessment
Assessment Roll 2023-2024**

Assessment Number & Assessor			ESFE	Assessment
Parcel Number	Owner Name(s)	Site Address	Units	
049511007000	TABONG UDT TRUST	16703 OMEGA ST	1.1500	162.55
049511008000	YIP JANNY CHEUNG KIN	16683 OMEGA ST	1.1500	162.55
049511009000	WONG MARILYN	16675 OMEGA ST	1.1500	162.55
049511010000	GABRIEL KEVIN P	16663 OMEGA ST	1.1500	162.55
049511011000	SPIVA WANDA G	16657 OMEGA ST	1.1500	162.55
049511012000	HARDEN NICHOLAS K & BRENDA L	16637 OMEGA ST	1.1500	162.55
049511013000	SOLIS JUAN G & LUZ	26208 LUCILLE ST	2.3000	325.11
049511014000	GONZALEZ-AVILA MIGUEL	26198 LUCILLE ST	1.1500	162.55
049511015000	KELLY BOBBY	26192 LUCILLE ST	1.1500	162.55
049511016000	BERMUDEZ ARELI & JUAN	26188 LUCILLE ST	1.1500	162.55
049511017000	TREJO EDGAR J JACOBO	26178 LUCILLE ST	1.1500	162.55
049511018000	ALLEN RUTH A & DOUGLAS R	26168 LUCILLE ST	1.1500	162.55
049511019000	RUIZ FAM TRUST	26160 LUCILLE ST	1.1500	162.55
049511020000	KNAPP MALISSA	26138 LUCILLE ST	1.1500	162.55
049511021000	HALL WAYNE K	26128 LUCILLE ST	1.1500	162.55
049511022000	BORCHERS SHAWN D & MARLO A	26108 LUCILLE ST	1.1500	162.55
049511023000	SIT KALANI KAN	16620 PARKER PL	1.1500	162.55
049511024000	HEREDIA JOSE A	16630 PARKER PL	1.1500	162.55
049511025000	SPIVA TRUST ETAL	16646 PARKER PL	1.1500	162.55
049511026000	LOPEZ BLAZ G & TRINI M	16658 PARKER PL	1.1500	162.55
049511027000	BERBER MODESTO C	16666 PARKER PL	1.1500	162.55
049511028000	JACOBO NEREIDA G	16682 PARKER PL	1.1500	162.55
049511029000	JACOBO SERGIO & FRANCISCA A	16696 PARKER PL	1.1500	162.55
049511030000	SPIVA TRISTAN J	16710 PARKER PL	1.1500	162.55
049511031000	COWAN NATHAN & CHRISTINE L	16722 PARKER PL	1.1500	162.55
049511032000	PELAYO FERNANDO & ILIANA ETAL	16738 PARKER PL	1.1500	162.55
049511033000	MURRAY MERIDA L	16744 PARKER PL	1.1500	162.55
049511034000	YOLO COUNTY OF		0.1540	21.77
049511035000	YOLO COUNTY OF		0.1540	21.77
049511036000	YOLO COUNTY OF	16700 BRUNO CT	0.1540	21.77
049511037000	CALIFORNIA STATE OF		0.1540	21.77
049511038000	CALIFORNIA STATE OF		0.1540	21.77
049511039000	BIRRELL LIV TRUST	26303 HWY 16	0.1540	21.77
049512001000	GUERRERO CARLOS R & AMIE L	16733 FREEMAN ST	1.1500	162.55
049512002000	POONI BALRAJ	16725 FREEMAN ST	1.1500	162.55
049512003000	OPENDOOR PROPERTY TRUST I	16705 FREEMAN ST	1.1500	162.55
049512004000	DONNELLY 2015 TRUST	16693 FREEMAN ST	1.1500	162.55
049512005000	PELAYO ALVARO ETAL	16677 FREEMAN ST	1.1500	162.55
049512006000	GUZMAN BENITO & EMMA	16665 FREEMAN ST	1.1500	162.55
049512007000	GUZMAN FAM REV TRUST	16653 FREEMAN ST	1.1500	162.55
049512008000	TRUJILLO JAIME PINA & PINA BLANCA E	16648 OMEGA ST	1.1500	162.55
049512009000	DENNY JOHN R	16660 OMEGA ST	1.1500	162.55
049512010000	GREGORIO FAM REV TRUST	16668 OMEGA ST	1.1500	162.55
049512011000	MELENDEZ JOSE LUIS	16680 OMEGA ST	1.1500	162.55
049512012000	ROCHA JUAN M & MARIA G	16694 OMEGA ST	1.1500	162.55
049512013000	LENERT LIV TRUST	16708 OMEGA ST	1.1500	162.55
049512014000	CORONA MARTIN III	16726 OMEGA ST	1.1500	162.55
049512015000	LOZA ABDON & CECILIA	16734 OMEGA ST	1.1500	162.55
049513001000	MISLANG LUIS A & MARIAM	16735 PARKER PL	1.1500	162.55
049513002000	ALDANA 2021 REV TRUST	16719 PARKER PL	1.1500	162.55
049513003000	NOMURA LIV TRUST	16707 PARKER PL	1.1500	162.55
049513004000	ASPRER LIVING TRUST	16691 PARKER PL	1.1500	162.55
049513005000	BAUTHIER HALLI A	16679 PARKER PL	1.1500	162.55
049513006000	BURNS FAM TRUST	16667 PARKER PL	1.1500	162.55
049513007000	FUNG CHEUNG FAN TAM & WING SANG	16647 PARKER PL	1.1500	162.55
049513008000	COLLINS MICHAEL S & SHARON F	16652 FREEMAN ST	1.1500	162.55
049513009000	GOMEZ RICARDO & CARMEN V	16664 FREEMAN ST	1.1500	162.55

**Esparto Fire Protection District
Fire Protection and Emergency Response Services Assessment
Assessment Roll 2023-2024**

Assessment Number & Assessor Parcel Number	Owner Name(s)	Site Address	ESFE Units	Assessment
049513010000	RITZ DAVID B	16676 FREEMAN ST	1.1500	162.55
049513011000	SIINGH GURPAL & SINGH CHINDA	16692 FREEMAN ST	1.1500	162.55
049513012000	HARRIS ANGELA & BRYSE DAVID	16704 FREEMAN ST	1.1500	162.55
049513013000	ENCISO LUIS MIGUEL LOZA	16724 FREEMAN ST	1.1500	162.55
049513014000	HEREDIA MARTHA O	16732 FREEMAN ST	1.1500	162.55
049513015000	HEREDIA MARCELLA	16736 FREEMAN ST	1.1500	162.55
049514001000	VEGA VICTOR ANDRES ANGUIANO	26101 BRUNO ST	1.1500	162.55
049514002000	HERRERA VIRGINIA ETAL	26111 BRUNO ST	1.1500	162.55
049514003000	WEST-CAGE JANICE	26127 BRUNO ST	1.1500	162.55
049514004000	RODRIGUEZ PEDRO CANCHOLA	26137 BRUNO ST	1.1500	162.55
049514005000	MAIN ZACHARY & NICOLE	26157 BRUNO ST	1.1500	162.55
049514006000	ASCENIO-LOPEZ RAUL	26169 BRUNO ST	1.1500	162.55
049514007000	GARCIA JASON CARLOS & EMILY MARIE	26179 BRUNO ST	1.1500	162.55
049514008000	JACOBO EDGAR	26187 BRUNO ST	1.1500	162.55
049514009000	VARRICCHIO BRIAN & CATHY L	26193 BRUNO ST	1.1500	162.55
049521001000	PEREZ RICARDO PRADO	25774 CRAIG ST	1.1500	162.55
049521002000	PRYOR MIKE B JR & TRACY L	25778 CRAIG ST	1.1500	162.55
049521003000	NESSER JAMES J & PAULINE L	25782 CRAIG ST	1.1500	162.55
049521004000	NGUYEN YEN HOANG	25786 CRAIG ST	1.1500	162.55
049521005000	EDWARDS JASON & RUTH	25790 CRAIG ST	1.1500	162.55
049521006000	VILLEGAS JOSE	25794 CRAIG ST	1.1500	162.55
049521007000	LUA JOSELUIS S & SUSAN G	25798 CRAIG ST	1.1500	162.55
049521008000	HODGES MICHAEL	25802 CRAIG ST	1.1500	162.55
049521009000	MIDDLEMAN ROBERT	25806 CRAIG ST	1.1500	162.55
049521010000	RUVALCABA PEDRO GUTIERREZ	25810 CRAIG ST	1.1500	162.55
049521011000	ROBERT SHERRY C	25814 CRAIG ST	1.1500	162.55
049522002000	JOHNSON KAREN	25809 CRAIG ST	1.1500	162.55
049522003000	MELENDEZ RAUL & EVELIN	25803 CRAIG ST	1.1500	162.55
049522004000	HODGES BENJAMIN	25801 CRAIG ST	1.1500	162.55
049522005000	MARFIL ANTONE R JR & JAMIE A REED	25797 CRAIG ST	1.1500	162.55
049522006000	MONTOYA AURORA	25793 CRAIG ST	1.1500	162.55
049522007000	ELLIOTT WILLIAM J & KELLY ANN	25789 CRAIG ST	1.1500	162.55
049522008000	CHANANA SUNDEEP ETAL	25785 CRAIG ST	1.1500	162.55
049522009000	GARCHA REV TRUST	25781 CRAIG ST	1.1500	162.55
049522010000	CAMPOPIANO BRUCE JR & ELIZABETH	25777 CRAIG ST	1.1500	162.55
049522011000	CANCHOLA MARIA G	25773 CRAIG ST	1.1500	162.55
049522012000	DEES MELISSA A	25772 GRAFTON ST	1.1500	162.55
049522013000	CASE BRYAN D & DIANE R	25776 GRAFTON ST	1.1500	162.55
049522014000	BUENVENIDA JERRY & TIFFANY	25780 GRAFTON ST	1.1500	162.55
049522015000	FIERRO ALVARO	25784 GRAFTON ST	1.1500	162.55
049522016000	MICHALS KATHERINE	25788 GRAFTON ST	1.1500	162.55
049522017000	HUDSON DAVID W & YOLANDA P	25792 GRAFTON ST	1.1500	162.55
049522018000	MARTINEZ HERLINDO C	25796 GRAFTON ST	1.1500	162.55
049522019000	TORRES CARLOS	25800 GRAFTON ST	1.1500	162.55
049522021000	LOPEZ RAUL MELENDEZ	25808 GRAFTON ST	2.3000	325.11
049522023000	LOPEZ RAUL MELENDEZ	16984 WYATT WAY	1.1500	162.55
049531001000	YCFWCD		0.1540	21.77
049531002000	YOLO COUNTY OF		0.1540	21.77
049532001000	PULIDO ALEJANDRO	16777 GABLE DR	1.1500	162.55
049532002000	GREER SHERRY	16781 GABLE DR	1.1500	162.55
049532003000	CHRISP MARK J & JACKIE L	25752 CRAIG ST	1.1500	162.55
049532004000	GARCIA MARTIN ROJAS & ALTAMIRANO VICENTA	25756 CRAIG ST	1.1500	162.55
049532005000	ORTIZ SANTOS RAMIREZ	25760 CRAIG ST	1.1500	162.55
049532006000	MOORE 2016 TRUST	25764 CRAIG ST	1.1500	162.55
049532007000	SILVA MIGUEL SOLORIO	16786 COWELL DR	1.1500	162.55
049532008000	PEREZ RICARDO PRADO	16790 COWELL DR	1.1500	162.55
049533001000	YANEZ REBECCA A & RAMIRO	25768 GRAFTON ST	1.1500	162.55

**Esparto Fire Protection District
Fire Protection and Emergency Response Services Assessment
Assessment Roll 2023-2024**

Assessment Number & Assessor Parcel Number	Owner Name(s)	Site Address	ESFE Units	Assessment
049533002000	LOPEZ GUADALUPE ETAL	25764 GRAFTON ST	1.1500	162.55
049533003000	CASTLE DONALD L & KARI B	25760 GRAFTON ST	1.1500	162.55
049533004000	ANTENORCRUZ SOLEDAD B & LARRY Z	25756 GRAFTON ST	1.1500	162.55
049533005000	CERDA MARIA CARDENAS	25752 GRAFTON ST	1.1500	162.55
049533006000	ZAMORA MARIO FUENTES	25748 GRAFTON ST	1.1500	162.55
049533007000	GONZALES ERBEY	16793 GABLE DR	1.1500	162.55
049533008000	TORRES MARIA & RAMON	16789 GABLE DR	1.1500	162.55
049533009000	CURRYWOOD LIV TRUST	16785 GABLE DR	1.1500	162.55
049533010000	ARCE LIV TRUST	25755 CRAIG ST	1.1500	162.55
049533011000	MARTINEZ JESUS & LAURA M	25759 CRAIG ST	1.1500	162.55
049533012000	LEBOEUF VERONICA & SCOTT	25761 CRAIG ST	1.1500	162.55
049533013000	TAGUE DAVID W JR & RAMONA	25763 CRAIG ST	1.1500	162.55
049533014000	ANGEL JOSE AYALA	25765 CRAIG ST	1.1500	162.55
049533015000	MIRANDA GILBERTO & YESENIA	25769 CRAIG ST	1.1500	162.55
049541001000	YCFWCD		0.1540	21.77
049541002000	YOLO COUNTY OF		0.1540	21.77
049542001000	DRESSLER REV TRUST	16782 COWELL DR	1.1500	162.55
049542002000	BARRAZA OSCAR AURELIO MURILLO SR	16778 COWELL DR	1.1500	162.55
049542003000	ARCE MARCIANO & AMELIA	16774 COWELL DR	1.1500	162.55
049542004000	IGNACIO EDMUNDO & ANGELINA	16770 COWELL DR	1.1500	162.55
049542005000	FAYARD JOSE A & AMANDA	16766 COWELL DR	1.1500	162.55
049542006000	MEDINA NOE	25767 DUNCAN DR	1.1500	162.55
049542007000	MILAM GEORGINA	25765 DUNCAN DR	1.1500	162.55
049542008000	NEWELL ALEASHA	25763 DUNCAN DR	1.1500	162.55
049542009000	TRUJILLO RIGOBERTO & MARISOL	25759 DUNCAN DR	1.1500	162.55
049542010000	FORZAGLIA JEFFREY N & CHRISTELLE	25755 DUNCAN DR	1.1500	162.55
049542011000	DUNLAP JOSEPH W & SOPHIA A	25751 DUNCAN DR	1.1500	162.55
049542012000	PEDROIA ROBERT & SHERYL	25747 DUNCAN DR	1.1500	162.55
049542013000	HERNANDEZ HERNAN	16761 GABLE DR	1.1500	162.55
049542014000	MCNAMARA JOE H JR	16765 GABLE DR	1.1500	162.55
049542015000	CLAY NICHOLAS DAVID & EMILY MARIE	16769 GABLE DR	1.1500	162.55
049542016000	QUEZADA ENRIQUE	25748 GABLE CT	1.1500	162.55
049542017000	WERKING INC	25754 GABLE CT	1.1500	162.55
049542018000	MOLINA MIGUEL & LILIA	25760 GABLE CT	1.1500	162.55
049542019000	CORONA NOE & KAREN M	25766 GABLE CT	1.1500	162.55
049542020000	HARRIS CARL & FELICIA	25763 GABLE CT	1.1500	162.55
049542021000	HASSON JONATHAN	25757 GABLE CT	1.1500	162.55
049542022000	MONTOYA ISIDRO FIERROS	25751 GABLE CT	1.1500	162.55
049542023000	TABONG UDT TRUST	25745 GABLE CT	1.1500	162.55
049542024000	CORONA MARTIN JR & SUSANA	16773 GABLE DR	1.1500	162.55
049551001000	YOLO COUNTY OF		0.1540	21.77
049552001000	CORONA MARTIN & RACHEL	25771 DUNCAN DR	1.1500	162.55
049552002000	RUBIO CHRISTOPHER	25775 DUNCAN DR	1.1500	162.55
049552003000	MUNDACA JOSE A & MARIANA E	25779 DUNCAN DR	1.1500	162.55
049552004000	GASPERSON MICHAEL I	25783 DUNCAN DR	1.1500	162.55
049552005000	CAMARILLO ARSENIO & SOFIA	25787 DUNCAN DR	1.1500	162.55
049552006000	JENSEN JAY N & DEBORAH J	25791 DUNCAN DR	1.1500	162.55
049552007000	VALENZUELA RAFAEL ROBLES ETAL	25795 DUNCAN DR	1.1500	162.55
049552008000	COTA JULIO & YOLANDA	25799 DUNCAN DR	1.1500	162.55
049552009000	HUA REV TRUST	25803 DUNCAN DR	1.1500	162.55
049552010000	DIAZ-FIGUEROA ANTONIO	25807 DUNCAN DR	1.1500	162.55
049552011000	MARTIN MONICA KATHLEEN	25811 DUNCAN DR	1.1500	162.55
049552012000	YOLO COUNTY OF		0.1540	21.77
049552013000	QUITER JEFFREY C	25788 MARSH CT	1.1500	162.55
049552014000	JIMENEZ EMILIO & BELINDA	25794 MARSH CT	1.1500	162.55
049552015000	LOKKESMOE RYAN J & CONNIE	25800 MARSH CT	1.1500	162.55
049552016000	MACGREGOR CHRISTOPHER C & TARA D	25806 MARSH CT	1.1500	162.55

**Esparto Fire Protection District
Fire Protection and Emergency Response Services Assessment
Assessment Roll 2023-2024**

Assessment Number & Assessor			ESFE	
Parcel Number	Owner Name(s)	Site Address	Units	Assessment
049552017000	YOLO COUNTY OF		0.0000	0.00
049552018000	ALAMO JOSE	25803 MARSH CT	1.1500	162.55
049552019000	GARZA ROGELIO JR & MIREYA	25797 MARSH CT	1.1500	162.55
049552020000	HERNANDEZ MARIBEL	25791 MARSH CT	1.1500	162.55
049552021000	GLINES CORY & DANA	25775 MARSH CT	1.1500	162.55
049561001000	RODRIGUEZ JULIAN N & AMANDA A	25799 GRAFTON ST	1.1500	162.55
049561002000	CHACON MARYCARMEN S	25811 GRAFTON ST	1.1500	162.55
049561003000	LOPEZ 2020 REV TRUST	25891 GRAFTON ST	2.3292	329.23
049561004000	CORONA MARTIN SR & RACHEL ETAL	25812 STEPHENS ST	1.1500	162.55
049561005000	AGUILERA FRANCISCO ETAL	25798 STEPHENS ST	1.1500	162.55
049562001000	BARWIS AMANDA	25754 STEPHENS ST	0.4771	67.44
049562002000	MULLER JOSHUA & SARAH	25760 STEPHENS ST	1.1500	162.55
049562003000	BRILLANTES MELBA DE JESUS	25768 STEPHENS ST	1.1500	162.55
049562004000	MELENDEZ-LOPEZ HECTOR	25772 STEPHENS ST	1.1500	162.55
049562005000	CONTRERAS ALFONSO SANCHEZ	25774 STEPHENS ST	1.1500	162.55
049562006000	FIERROS CECILIA LOPEZ	25778 STEPHENS ST	1.1500	162.55
049562007000	LAUER VINCENT A & LORENA M	25782 STEPHENS ST	1.1500	162.55
049562008000	FLEMMING ANGELO L & LUCIA	25788 STEPHENS ST	1.1500	162.55
049562009000	PISANI DOMINIC R & VANESSA	25787 GRAFTON ST	1.1500	162.55
049562010000	MORENO DAVID MANUEL & SANDRA	25783 GRAFTON ST	1.1500	162.55
049562011000	QUIROZ RAFAEL	25779 GRAFTON ST	1.1500	162.55
049562012000	LEONARDO WHITNEY & HANK	25775 GRAFTON ST	1.1500	162.55
049562013000	BARAJAS BERONICA & DAVID	25771 GRAFTON ST	1.1500	162.55
049563001000	COPE DEWEY L & ADELAIDA	25781 STEPHENS ST	1.1500	162.55
049563002000	DEL TORO ELIZABETH & MANUEL	25785 STEPHENS ST	1.1500	162.55
049563003000	GUARDADO SABRINA SUNDANCE & FERNANDO C	25787 STEPHENS ST	1.1500	162.55
049563004000	CONRIQUE JUAN LUIS & ELIDIA	25791 STEPHENS ST	1.1500	162.55
049563005000	MAST JORDAN C & JENNIFER M	25797 STEPHENS ST	1.1500	162.55
049563006000	T LEW FAMILY LLC	25811 STEPHENS ST	1.1500	162.55
049563007000	AVILA MARICELA & ZEPEDA SERGIO	25853 STEPHENS ST	1.1500	162.55
049563008000	GRIFFIN HAILEY FAM TRUST	25875 STEPHENS ST	1.1500	162.55
049563009000	NEMETH THOMAS R & ROXANNE	25874 CLOVER ST	1.1500	162.55
049563010000	CLEMENTS FAM 2006 REV TRUST	25852 CLOVER ST	1.1500	162.55
049563011000	JENKINS TRUST	25810 CLOVER ST	1.1500	162.55
049563012000	HANSI 2019 REV TRUST	25796 CLOVER ST	1.1500	162.55
049563013000	HUNTER JAMES T & LINDA R	25790 CLOVER ST	1.1500	162.55
049563014000	KENNEDY REV TRUST	25786 CLOVER ST	1.1500	162.55
049563015000	ROSALES REV LIV TRUST	25782 CLOVER ST	1.1500	162.55
049564001000	YOLO COUNTY OF		0.1540	21.77
049571001000	VIZCARRA JOSE A	25945 GRAFTON ST	1.1500	162.55
049571002000	LOPEZ RICARDO & GOMEZ DE LOPEZ CLAUDIA K	25951 GRAFTON ST	1.1500	162.55
049571003000	CHAVEZ CANDELARIO & MARIA	25957 GRAFTON ST	1.1500	162.55
049571004000	MALDONADO JUANA S & HECTOR C	25963 GRAFTON ST	1.1500	162.55
049571005000	BECKWITH BABETTE A	25969 GRAFTON ST	1.1500	162.55
049571006000	FIGUEROA IRMA & GILBERTO	25973 GRAFTON ST	1.1500	162.55
049571007000	TURNER EDWARD	17000 CAMPOS DR	1.1500	162.55
049571008000	ALBI HELEN KATHERINE	17022 CAMPOS DR	1.1500	162.55
049571009000	WEHR JANET L & JARED N	17050 CAMPOS DR	1.1500	162.55
049571010000	SINGH RASHPAL & SANDHU MANJIT	17076 CAMPOS DR	1.1500	162.55
049571011000	FONTILLAS VICTOR E	17098 CAMPOS DR	1.1500	162.55
049571012000	FLORES LOURDES H	17100 CAMPOS DR	1.1500	162.55
049571013000	ROBLES JAIME HERNANDEZ	25990 CLOVER ST	1.1500	162.55
049571014000	WONG OSCAR F & MARTA	25988 CLOVER ST	1.1500	162.55
049571015000	LAFORGA FAM TRUST	25980 CLOVER ST	1.1500	162.55
049571016000	MCCULLOUGH TRUST	25976 CLOVER ST	1.1500	162.55
049571017000	RICKEY BOYD DOUGLAS & HEATHER MICHELLE	25973 STEPHENS ST	1.1500	162.55
049571018000	SVOBODA ROBERT D	25967 STEPHENS ST	1.1500	162.55

**Esparto Fire Protection District
Fire Protection and Emergency Response Services Assessment
Assessment Roll 2023-2024**

Assessment Number & Assessor			ESFE	Assessment
Parcel Number	Owner Name(s)	Site Address	Units	
049571019000	UNDERWOOD CLARENCE G & REGINA	25965 STEPHENS ST	1.1500	162.55
049571020000	FRAGA JOE & BARBARA	25964 STEPHENS ST	1.1500	162.55
049571021000	MULLER ROXANNE J	25962 STEPHENS ST	1.1500	162.55
049571022000	SUNG LIMHENG LYONI	25956 STEPHENS ST	1.1500	162.55
049571023000	MARTINEZ RUBEN J & JEANIE M	25944 STEPHENS ST	1.1500	162.55
049572001000	CANCHOLA EDGAR	17001 CAMPOS DR	1.1500	162.55
049572002000	TAYLOR BRADLEY	17023 CAMPOS DR	1.1500	162.55
049572003000	GONZALEZ JAVIER S	17055 CAMPOS DR	1.1500	162.55
049572004000	COSSMAN TRUST	17067 CAMPOS DR	1.1500	162.55
049572005000	GUADARRAMA CARDIEL VILLAGOMEZ	17099 CAMPOS DR	1.1500	162.55
049572006000	MUNICH WILLIAM O & MEGAN K	17101 CAMPOS DR	1.1500	162.55
049572007000	FOSTER THORNE S	17125 CAMPOS DR	1.1500	162.55
049572008000	HOOPER ARTHUR JACK JR	17151 CAMPOS DR	1.1500	162.55
049573001000	LOWELL IKEYLA K & MATTHEW J	25901 STEPHENS ST	1.1500	162.55
049573002000	ANDERSON ROBERT C & SHIRLEY M	25943 STEPHENS ST	1.1500	162.55
049573003000	RAMOS FRED I II & JENNIFER M	25957 STEPHENS ST	1.1500	162.55
049573004000	YU ALEXANDER ETAL	25961 STEPHENS ST	1.1500	162.55
049573005000	2015-3 IH2 BORROWER LP	25964 CLOVER ST	1.1500	162.55
049573006000	LUMSEY GWENDOLYN	25960 CLOVER ST	1.1500	162.55
049573007000	BARRAGAN KATIE	25954 CLOVER ST	1.1500	162.55
049573008000	GARCIA RONALD	25942 CLOVER ST	1.1500	162.55
049573009000	HANG MONY & DIANA	25900 CLOVER ST	1.1500	162.55
050010003000	MARIANI JOSEPH TRUST ET AL		4.9606	701.18
050010004000	MARIANI JOSEPH TRUST ET AL		1.1735	165.87
050010005000	DOUBLE S FARMS LLC	27426 CR 25	8.7938	1,243.00
050010007000	SCRIBNER 2011 REV TRUST	27373 CR 23	4.0736	575.80
050010008000	YCFWCD		0.0000	0.00
050010015000	ROBBINS & MEADE REV LIV TRUST		0.5334	75.40
050010016000	FACQUE KONSTANTINOPOULOS FAM TRUST	19600 CR 87B	1.5567	220.04
050010017000	CACHE CREEK 243 LLC		0.5334	75.40
050010019000	MARIANI JOSEPH TRUST ET AL		1.8669	263.89
050010020000	ROBBINS & MEADE REV LIV TRUST	19190 CR 87B	3.9501	558.35
050010022000	JOE MARTINEZ ORCHARDS LLC	26350 CR 25	5.0275	710.64
050010023000	HUNDAL FAMILY TRUST		3.5498	501.76
050010024000	YOLO CO FLOOD CONTROL & WCD		0.8001	113.09
050010026000	FORBES 2021 LIV TRUST	19100 CR 86A	3.1499	445.24
054130002000	PAMUNKEY YOLO VINEYARD LLC		2.0320	287.22
054130003000	FITZGERALD EXEMPT FAM REV TRUST		0.7095	100.29
054130004000	ACHTERMAYER TIMOTHY E & PATRICIA J		0.1617	22.86
054130006000	ACHTERMAYER TIMOTHY E & PATRICIA J	10770 CR 87	1.5334	216.75
054130007000	MONDAVI FAMILY PARTNERS LLC		4.0640	574.45
054130008000	MONDAVI FAMILY PARTNERS LLC	27170 CR 14	3.0066	424.98
054130009000	PAMUNKEY YOLO VINEYARD LLC		1.8796	265.68
054130010000	PAMUNKEY YOLO VINEYARD LLC		0.1339	18.93
054140001000	PAMUNKEY YOLO VINEYARD LLC		0.1775	25.09
054140003000	YIN YUEXIN		0.2954	41.75
054140004000	ROAD FOURTEEN HOLDINGS LLC		0.1164	16.45
054140005000	YIN YUEXIN		0.3840	54.28
054140006000	MONDAVI FAMILY PARTNERS LLC		0.3375	47.71
054140009000	PAMUNKEY YOLO VINEYARD LLC		0.0675	9.54
054140010000	BAINS AMANJOT S		0.0495	7.00
054190001000	MONDAVI FAMILY PARTNERS LLC		0.1339	18.93
054190002000	ROAD FOURTEEN HOLDINGS LLC		0.0645	9.12
054190007000	ROAD FOURTEEN HOLDINGS LLC		0.1770	25.02
054190009000	SIDHU JOINT LIV TRUST	11930 CR 89	9.1534	1,293.83
054190016000	MONDAVI FAMILY PARTNERS LLC		0.1200	16.96
054190017000	MONDAVI FAMILY PARTNERS LLC		0.1185	16.75

**Esparto Fire Protection District
Fire Protection and Emergency Response Services Assessment
Assessment Roll 2023-2024**

Assessment Number & Assessor			ESFE	Assessment
Parcel Number	Owner Name(s)	Site Address	Units	
054200001000	HAYES LYNN R TRUST		4.0386	570.86
054200002000	HAYES OLIVER W TRUST		4.0640	574.45
054200003000	MONDAVI FAMILY PARTNERS LLC		4.0132	567.27
054200005000	LOPEZ KEVIN H & DONNA RENEE		0.2400	33.92
054200006000	LOPEZ KEVIN H & DONNA RENEE		2.1336	301.58
054200007000	MAST FAM 1996 REV TRUST		2.1336	301.58
054200008000	SCHAUPP REV TRUST		4.2672	603.17
054200009000	BISCHOFF FAM LTD PTNRSHIP		4.0894	578.04
054200010000	YCFWCD		0.0000	0.00
054200011000	YCFWCD		0.0000	0.00
054200012000	MONDAVI FAMILY PARTNERS LLC		0.1200	16.96
054200013000	MONDAVI FAMILY PARTNERS LLC		2.0320	287.22
054210001000	SCHAUPP REV TRUST	12045 CR 86	6.1468	868.85
054210002000	SCHAUPP REV TRUST		4.2672	603.17
054210003000	SCHAUPP ROBERT ETAL		4.0640	574.45
054210004000	BROWN JOAN D		4.2672	603.17
054210005000	BROWN JOAN D		4.2672	603.17
054210006000	MAST FAM 1996 REV TRUST		6.4008	904.75
054210007000	BENBOW SEP PROP TRUST ETAL	26100 CR 16	13.0708	1,847.56
054210008000	YCFWCD		0.0000	0.00
054220016000	BOUNDARY BEND OLIVES INC		0.1890	26.72
054220017000	BOUNDARY BEND ASSETS INC		0.2985	42.19
054220019000	DOHERTY TRUST		0.1339	18.93
054220020000	SUTTER HOME WINERY INC		6.0452	854.49
054220021000	SUTTER HOME WINERY INC		0.1339	18.93
054220022000	DOHERTY TRUST		9.3656	1,323.83
061110005000	KAY FAM TRUST		0.4481	63.34
061110006000	DURST FREDERICK J	23945 CR 13	0.5762	81.45
061120002000	HAYES LAURIE A		3.9421	557.22
061120003000	HAYES LAURIE A		6.7056	947.84
061120004000	KELLY REV TRUST		0.1320	18.66
061120005000	J&S ENTEPRISES LLC		0.2400	33.92
061120006000	HORSLEY SUZANNE		8.9408	1,263.78
061120007000	RICHTER SUSAN E		0.2561	36.20
061120008000	BOUNDARY BEND ASSETS INC	10240 CR 85	5.3762	759.93
061130001000	SCHAUPP REV TRUST		0.1304	18.43
061130002000	SCHAUPP REV TRUST		0.1337	18.90
061130003000	HROMADA FAM TRUST	11066 CR 85	3.1955	451.68
061130004000	GAMMEL FAMILY POWER APPT TRUST		2.3749	335.69
061130005000	SHIRAZ RANCH LLC	11246 CR 86	8.1280	1,148.89
061130006000	BLAIR LESLIE SUCC & SCHAUPP ROBERT SUCC TR		0.1473	20.82
061130007000	SCHAUPP REV TRUST	11701 CR 84B	3.5587	503.02
061130008000	HAMILTON 2012 REV TRUST	11820 CR 84B	1.1561	163.41
061130009510	HAMILTON 2012 REV TRUST		0.0297	4.20
061130009530	STEVENS TRUST		0.0297	4.20
061130010000	E O GAMMEL RANCH INC	11546 CR 85	0.2657	37.56
061130011000	SPKP CAPAY LLC		4.0640	574.45
061130012000	SHIRAZ RANCH LLC		4.0640	574.45
061140003000	CAPAY FAMILY RANCH LLC		0.3960	55.97
061140005000	RUDOLPH RANCH LLC	23745 CR 14	3.8043	537.74
061140006000	HAMMERNES VIRGINIA GIANNINI TRUST		0.4917	69.50
061170002000	CAPAY FAMILY RANCH LLC	23750 CR 15B	1.4944	211.23
061170003000	DURST JAMES MELVIN & DEBORAH DIANE		0.1320	18.66
061170004000	WILLIAMS GARY L TR		0.5280	74.63
061180001000	SMITH RICHARD EARL	12076 CR 84A	1.3515	191.03
061180002000	KALUGIN 2016 REV TRUST	12226 CR 84A	1.3515	191.03
061180004000	CHEN RICKER ETAL	12125 CR 84B	9.7816	1,382.63

**Esparto Fire Protection District
Fire Protection and Emergency Response Services Assessment
Assessment Roll 2023-2024**

Assessment Number & Assessor			ESFE	Assessment
Parcel Number	Owner Name(s)	Site Address	Units	
061180008000	WILLIAMS GARY L TR		0.2640	37.32
061180009000	FOUR D FARMS LLC	12530 CR 85	5.5425	783.43
061180010000	STORY REV LIV TRUST	12575 CR 85	4.2139	595.63
061180011000	DURST JAMES M & DEBORAH D		3.0226	427.24
061180012000	DURST JAMES M & DEBORAH D		1.0668	150.79
061180015000	BULLSEYE RANCHES LLC	12430 CR 86	9.0518	1,279.47
061180016000	GREWAL GURINDER S & JASVINDER K		4.4704	631.89
061180017000	MAIN JEFFREY ALAN & ANN H	12255 CR 84A	1.6309	230.53
061180018000	MORRIS JAMES L & KURZINGER EMILIE	12260 CR 84B/24330 CR 15B	2.7309	386.01
061180020000	DAWLEY FAM LIV TRUST	12091 CR 84A	1.3515	191.03
061180021000	MAIN JEFFREY ALAN & ANN H	12026 CR 84B	1.3515	191.03
061180022000	JOHNSTON RICHARD L & CHRISTINE	12152 CR 84B	1.3515	191.03
061180023000	MILLER REV TRUST	12215 CR 84A	1.3515	191.03
061180024000	OAKHAM DEBORAH K	12460 CR 84A	1.3515	191.03
061180025000	HJERPE CARL A & LYNETTE M	24004 CR 15B	1.3515	191.03
061180026000	MAGALLANES TED	12311 CR 84B	1.3515	191.03
061180027000	YU JILUN	24450 CR 15B	1.3515	191.03
905001166000	ROYALE ENERGY INC		0.0000	0.00
910001354000	CABEZUT KENNETH S	26262 CR 21A #66	0.0000	0.00
910001355000	SELF ARTHUR FRED	26262 CR 21A #8	0.0000	0.00
910001357000	RICHEAL ROBERT C	26262 CR 21A #17	0.0000	0.00
910001358000	ROMANO LOUIE	26262 CR 21A #22	0.0000	0.00
910001359000	FAYE ELLEN ASHLEY TRUST	26262 CR 21A #5	0.0000	0.00
910001581000	ARMSTRONG MARTIN	27490 HWY 16	0.0000	0.00
910001582000	DREXLER EILEEN	26262 CR 21A #59	0.0000	0.00
910001583000	GARDNER EILEEN C & DONALD D	26262 CR 21A #30	0.0000	0.00
910001586000	SCANLON L RENEE	26262 CR 21A #55	0.0000	0.00
910001590000	WITTMAN NICK L	26262 CR 21A #54	0.0000	0.00
910001593000	BATISTA TONY M	26262 CR 21A #29	0.0000	0.00
910001594000	HINRICHSEN JIMMIE CARSTEN & VIRGINIA ELINOR	26262 CR 21A #58	0.0000	0.00
910001595000	URIBE ANNE SHEARER	26262 CR 21A #11	0.0000	0.00
910001597000	BRANDT JULIE ANN	26262 CR 21A #70	0.0000	0.00
910001598000	LANDRETH JOHN C JR & CHARLENE S	26262 CR 21A #57	0.0000	0.00
910004830000	TEICHERT LAND CO		0.0000	0.00
910004833000	ELLIS KATHERINE C	26451 CR 21A	0.0000	0.00
910004834000	VIZCARRA JOSE A	24204 CR 23	0.0000	0.00
910004835000	MCCREARY DONALD L		0.0000	0.00
910004838000	TAUZER JOHN	26262 CR 21A #36	0.0000	0.00
910004839000	CROUCH GALA K	26262 CR 21A #53	0.0000	0.00
910004840000	REID FRANCIS	26262 CR 21A #92	0.0000	0.00
910004841000	PAINTER JUDITH A	26262 CR 21A #34	0.0000	0.00
910004842000	RAY WILSON & JUDY	26262 CR 21A #52	0.0000	0.00
910004843000	STEWART STEPHANIE	26262 CR 21A #33	0.0000	0.00
910004844000	MIRANDA RAFAEL	26262 CR 21A #12	0.0000	0.00
910004845000	FUENTES ERASMO	26262 CR 21A #88	0.0000	0.00
910004846000	VODENIK RONALD	26262 CR 21A #82	0.0000	0.00
910004847000	HEBB FAM TRUST	26262 CR 21A #44	0.0000	0.00
910004848000	CARRANZA LOREEN	26262 CR 21A #18	0.0000	0.00
910004849000	DYE PHYLLIS I & THOMAS J	26262 CR 21A #42	0.0000	0.00
910004850000	LOVE DONNA M	26262 CR 21A #2	0.0000	0.00
910004851000	OLIVER JOHN	26262 CR 21A #40	0.0000	0.00
910004852000	BENDER BRENDA	26262 CR 21A #81	0.0000	0.00
910004853000	PRYOR CLEO	26262 CR 21A #25	0.0000	0.00
910004854000	HOFFERT BENARD	26262 CR 21A #23	0.0000	0.00
910004855000	BROWN THOMAS V	26262 CR 21A #83	0.0000	0.00
910004856000	ANCONA ROBERT & KURTZ DOREEN	26262 CR 21A #49	0.0000	0.00
910004857000	ANGELES RAYMOND DELOS	26262 CR 21A #86	0.0000	0.00

**Esparto Fire Protection District
 Fire Protection and Emergency Response Services Assessment
 Assessment Roll 2023-2024**

**Assessment Number
 & Assessor**

Parcel Number	Owner Name(s)	Site Address	ESFE Units	Assessment
910004858000	GARCIA JOSEPH M & DONNA J	26262 CR 21A #87	0.0000	0.00
910004859000	MILTON GERTRUDE E	26262 CR 21A #43	0.0000	0.00
910004860000	ADAY JUDITH	26262 CR 21A #41	0.0000	0.00
910004861000	RYEL ILDA M & THOMAS R	26262 CR 21A #89	0.0000	0.00
910004862000	MCCOLLUM LIN	26262 CR 21A #32	0.0000	0.00
910004863000	FARRIOR LIV TRUST	26262 CR 21A #63	0.0000	0.00
910004864000	GARDNER GARY & BRENDA	26262 CR 21A #46	0.0000	0.00
910004865000	PEDERSEN EUGENE M TRUST	26262 CR 21A #50	0.0000	0.00
910004866000	VARGAS ABEL & DALIA	26262 CR 21A #79	0.0000	0.00
910011294000	CONNELLY LIV TRUST	26262 CR 21A #39	0.0000	0.00
910011309000	BIERER MARK	26262 CR 21A #67	0.0000	0.00
910011324000	CORREA VIRGINIA	26262 CR 21A #84	0.0000	0.00
910011346000	FITZSIMMONS TRACI	26262 CR 21A #6	0.0000	0.00
910011365000	COUNTRY VILLA MH OWNERS LLC	26262 CR 21A #9	0.0000	0.00
910011409000	COUNTRY VILLA MH OWNERS LLC	26262 CR 21A #69	0.0000	0.00
910011554000	KEITH MARGARET P	26262 CR 21A #90	0.0000	0.00
910011570000	ANGUAY EUSTAQUIO	26262 CR 21A #19	0.0000	0.00
910011573000	OWENS ROLAND L	26262 CR 21A #13	0.0000	0.00
910011589000	TYSON MILLIE A	26262 CR 21A #35	0.0000	0.00

TOTALS:

2,811.6110 \$397,419.00

End Notes

¹ Insurance Services Offices Inc. <http://www.rockwall.com/documents/fire/ISO.pdf>

² Institute for Business & Home Safety, "Protect Your Home Against Wildfire Damage," <http://www.ibhs.org/publications/view.asp?id=125>

³ *ibid.*, p.2