



Helping Yolo County's Neediest Families help themselves!

Yolo County has launched an exciting Yolo Basic Income (YOBI) program to support some of the most in need families in Yolo County. This unique pilot targets at-risk families with children under the age of 6. The pilot pairs stipends with case management through the CalWORKS program. For 2 years these families will receive case management, resources and additional income that will put their families above the California Poverty Measure!

Why Yolo?

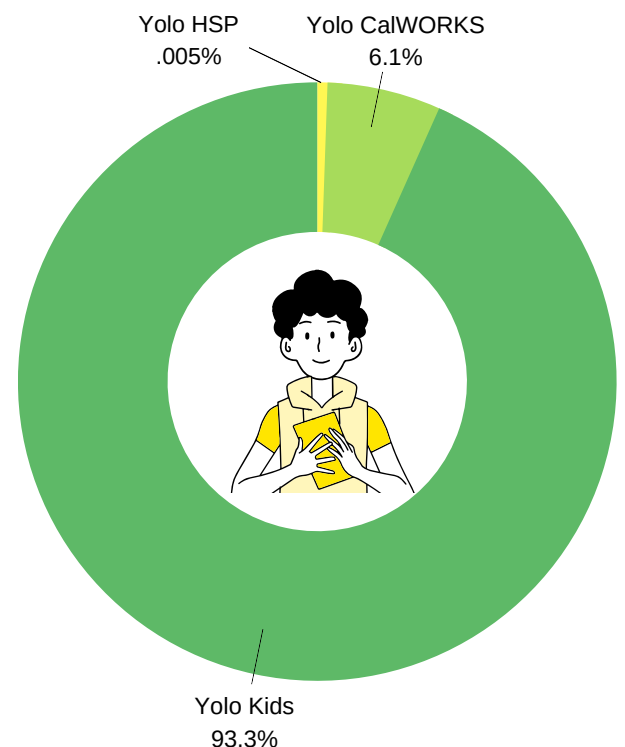
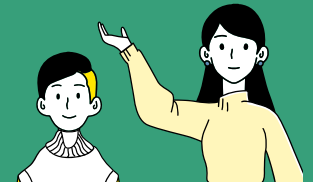
Yolo County has the (2017–2019) highest poverty rate in California (20.9%). With 216,000 residents, Yolo is great a use case for both small and large counties.

Yolo has a very diverse mix of cities; representing urban, rural and suburban environments. Woodland, West Sacramento, Winters, Davis and Unincorporated.

The YOBI Program is a great sample pilot for all the complex populations across the State of California and



WHAT FAMILIES WOULD WE SERVE?



Yolo Kids Under 6

Where do we find kids in deepest poverty?

1

According to the US Census in July of 2019 there were 11,418 Children in Yolo County under the age of 6

2

Yolo County HHSA Social Services Data indicates there are 704 kids under the age of 5 on the CalWORKS program. 6.1% of all kids under the age of 6.

3

Yolo County HHSA Social Services Data indicates there are 54 kids under the age of 5 on the CalWORKS HSP Subprogram. .005% of all kids under the age of 6.

63 Yolo County HSP Kids and their Families!

What is the plan?



This pilot targets CalWORKS Housing Support Families with children under the age of 6. There are **54 families** that meet this criteria in Yolo County. These families receive traditional case management support and benefits through the CalWORKS program. The pilot provides the additional benefit of support payments that will put the total income of these families **ABOVE** the California Poverty Measure for a full 2 years starting in Apr 2022! Average monthly grants are \$1,244.

CalWORKS Benefits include: Health, Housing, Food, Childcare, Mental Health, Substance Abuse, Career and Financial Supports!

How will we we measure success?

Program Evaluation - We have some amazing partners on evaluation through UC Davis. We will be conducting full study over the 2 year period specifically focusing on housing stability, income, family health, family mental health and self sufficiency. This evaluation will be conducted by trained peer review specialists with lived experience and culturally relevant materials.



Thank you to our generous partners:



For more information:
Tanya.Provencher@yolocounty.org