



# CLIMATE ACTION & ADAPTATION PLAN

## YOUTH ART CONTEST

Yolo County's Sustainability Team needs your help to create our 2024 Back to School Climate Action and Adaptation Plan (CAAP) Awareness Calendar!



### ABOUT

Climate change is when our Earth gets hotter and drier. This is tough for people, animals, and plants because it can be hard to live in such conditions. It can also harm the environment and lead to big fires. Climate change can also bring lots of rain and strong winds, which sometimes lead to roads flooding or power lines falling down. Yolo County is coming up with a 2030 Climate Action and Adaptation Plan (CAAP) to fight climate change and make our county and the Earth a better place to live. We can help by planting more trees, using less energy and water, eating more veggies and less meat, and putting in solar panels to make our own energy from the sun.

### PROMPTS

Pick from one of the following prompts:

- #1 What does a healthy planet Earth look like to you?
- #2 What wild animals would you like to see stay in Yolo County?
- #3 What can people do to help stop climate change?
- #4 What does a healthy Yolo County look like to you?
- #5 What does climate action in Yolo County look like to you?
- #6 How do you like to protect the environment?

### CONTEST RULES

- Acceptable Modalities (digital art, painting, watercolor, pastel, colored pencil, marker, crayon, colored pen, oil pastels, chalk, etc.)  
Artwork must be done on a blank printer paper or digital equivalent.
- Landscape format (8.5" by 11.0") flipped on its side.
- Write your name (first and last) on the back.
- NO black and white drawings (USE COLOR).
- All artwork must be original.
- All artwork must stick to the selected prompt.
- All artwork must include a written message or phrase.
- Only one entry/submission per applicant.
- ~~~~~
- Once an entry is submitted it cannot be edited, modified, or replaced.
- Once an entry is submitted it is considered the property of Yolo County and may not be returned. Yolo County reserves the right to publish entries in future publications without additional compensation or notification.
- All entries must be accompanied by a completed Registration Form for enrollment in the contest.
- By submitting an application (Art Entry + Registration Form) the applicant agrees to (1) ALL of the Contest Rules. and (2) having their artwork included in the final calendar.

### ELIGIBILITY

Applicant must be a Yolo County resident.

Applicant must be a student in grades K-12.

### DUE DATE

The competition closes on **January 1st, 2024!**

### WHERE TO SUBMIT

Front Counter at the  
Department of Community Services  
Building, 292 W. Beamer St., Woodland,  
CA 95695  
ALL Yolo County Library Branches

### IMPORTANT!

Registration Forms will be available at the submission Drop-Off locations and can also be printed out online at:

<https://tinyurl.com/y2s3erav>

### QUESTIONS?

Email  
[sustainability@yolocounty.org](mailto:sustainability@yolocounty.org)



@yolosustainability



## CLIMATE ACTION & ADAPTATION PLAN

# YOUTH ART CONTEST

Yolo County's Sustainability Team needs your help to create our 2024 Back to School Climate Action and Adaptation Plan (CAAP) Awareness Calendar!

## RULES

Acceptable Modalities (digital art, painting, watercolor, pastel, colored pencil, marker, crayon, colored pen, oil pastels, chalk, etc.)

Artwork must be done on a blank printer paper or digital equivalent.

- Landscape format (8.5" by 11.0") flipped on its side.
- Write your name (first and last) on the back.

NO black and white drawings **(USE COLOR)**

All artwork must be original.

All artwork must stick to the selected prompt.

All artwork must include a message or phrase.

Only one entry/submission per applicant.

Once an entry is submitted it cannot be edited, modified, or replaced.

Once an entry is submitted it is considered the property of Yolo County and may not be returned. Yolo County reserves the right to publish entries in future publications without additional compensation or notification.

All entries must be accompanied by a completed Registration Form for enrollment in the contest.

By submitting an application (Art Entry + Registration Form) the applicant agrees to (1) ALL of the Contest Rules and (2) having their artwork included in the final calendar.

Registration Forms will be available at the submission Drop-Off locations and can also be printed out online at, <https://tinyurl.com/y2s3erav>



### QUESTIONS?

Email [sustainability@yolocounty.org](mailto:sustainability@yolocounty.org)





## CLIMATE ACTION & ADAPTATION PLAN

# YOUTH ART CONTEST

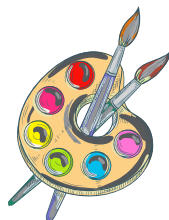
Yolo County's Sustainability Team needs your help to create our 2024 Back to School Climate Action and Adaptation Plan (CAAP) Awareness Calendar!

## DROP-OFF LOCATIONS

**Department of Community Services Building**  
292 W Beamer St., Woodland, CA 95695

### **Yolo County Library Branches**

Arthur F. Turner Community Library  
Clarksburg Branch Library  
Esparto Regional Library  
Knights Landing Branch Library  
Mary L. Stephens - Davis Branch Library  
South Davis Montgomery Library  
Winters Community Library  
Yolo Branch Library



### QUESTIONS?

Email [sustainability@yolocounty.org](mailto:sustainability@yolocounty.org)

