

Yolo County Public Guardian

Presented By:

Manager/Chief Deputy Public Guardian, Laurie Haas



Who is the Public Guardian and What Do We Do?

The first office of the Public Guardian in California was established in 1945 in Los Angeles County. Now every California county has a Public Guardian who is the substitute decision maker for the person and estate of vulnerable populations of the county, such as the frail elderly and persons with serious mental illness.

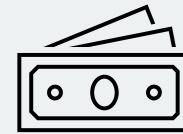
Our Yolo County Commitment



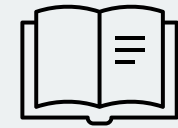
- Treat everyone with dignity, compassion and understanding



- Act in the best interest of the conservatee

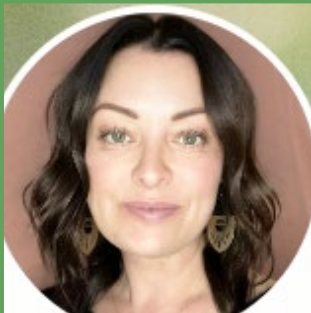


- Protect and manage conservatee estates to the highest standard



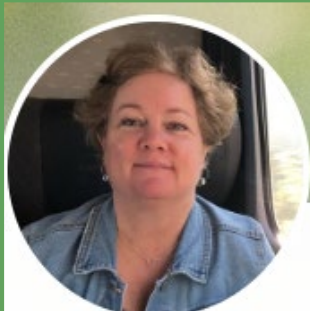
- Commitment and Oath to BOS and Court to carry out duties openly and willingly accepting the role bestowed upon PG

Public Guardian Leadership



Karleen Jakowski

Public Guardian



Laurie Haas

Chief Deputy Public Guardian

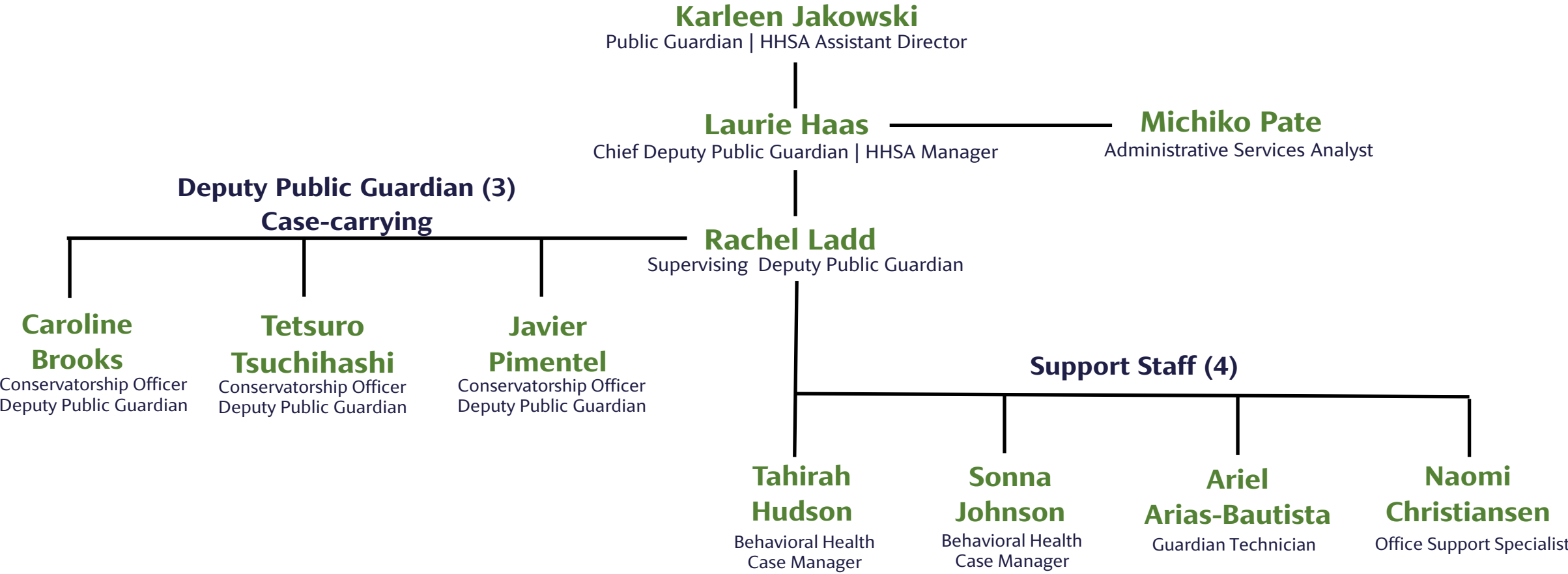


Rachel Ladd

Supervising Deputy Public Guardian



Organization Chart





We care for 249 of Yolo County's most disabled and vulnerable individuals. Here's how:

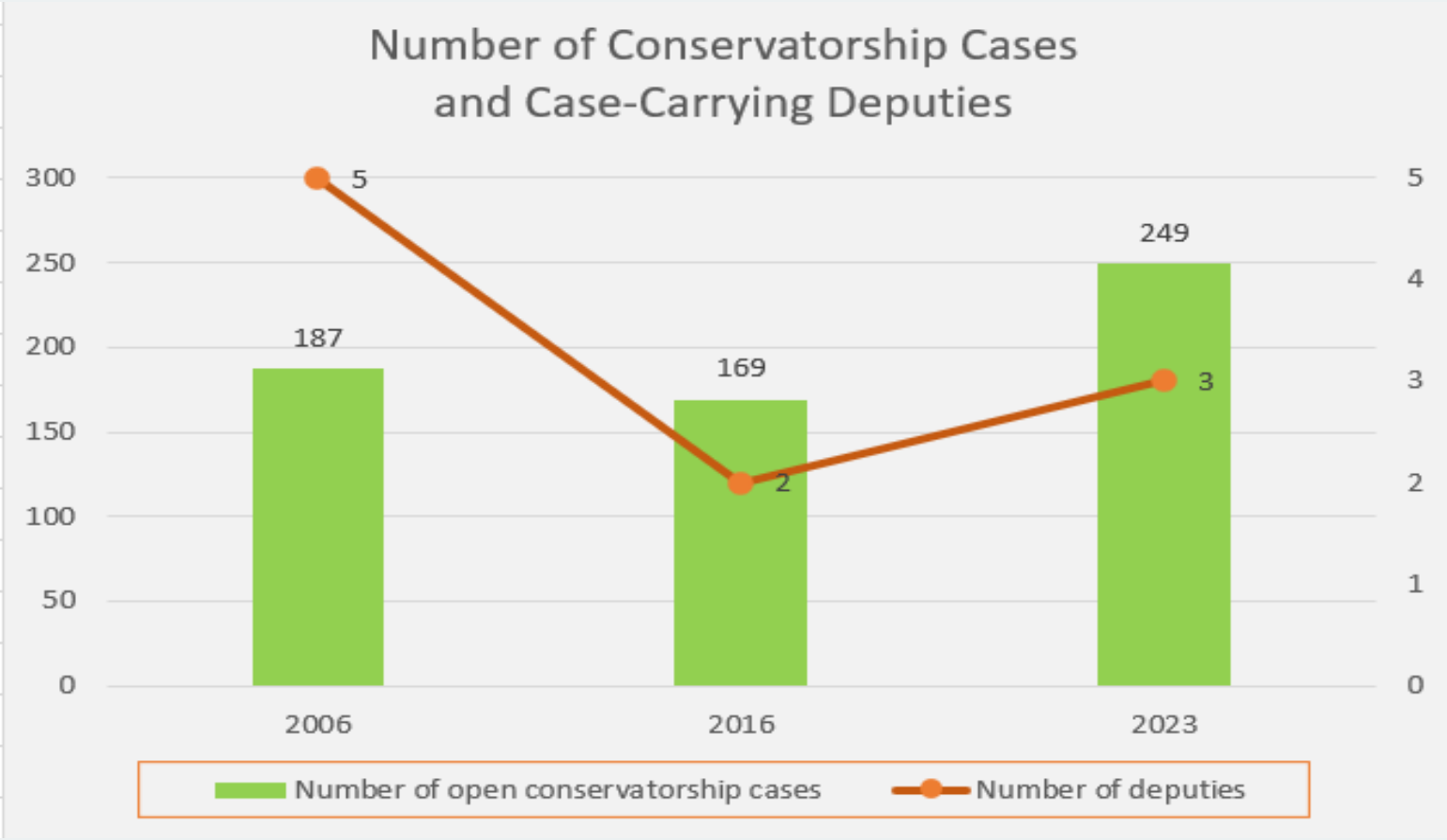
Tasks Requiring Deputized Staff

- Investigation of all conservatorship referrals
- Recommendation to the Court whether conservatorship is necessary
- Ongoing Court Reporting for every conservatee
- Inventory/Marshalling of all assets and properties (search, property removal, storage)
- Sales of assets (real estate, vehicles, jewelry, firearms, securities, antiques and other items)
- Applying/maintaining conservatee public benefits; Securing pensions, stocks, investments
- Paying bills/debt management (medical, utilities, mortgage, loan, collections, and others)
- Special Needs Trust management
- Placement Arrangements
- Community and Provider relations- statewide
- Coordination of medical/psychiatric needs, Treatment, consents
- Estate planning and management
- End of life decisions
- Case closure and discharge

Support Staff Tasks

- Regularly scheduled conservatee visits; Contact with family members
- Transporting/accompanying conservatees to medical/psychiatric appointments
- Purchase and delivery of needed items for conservatee
- Administrative support (phone calls, faxes, mail, scheduling)

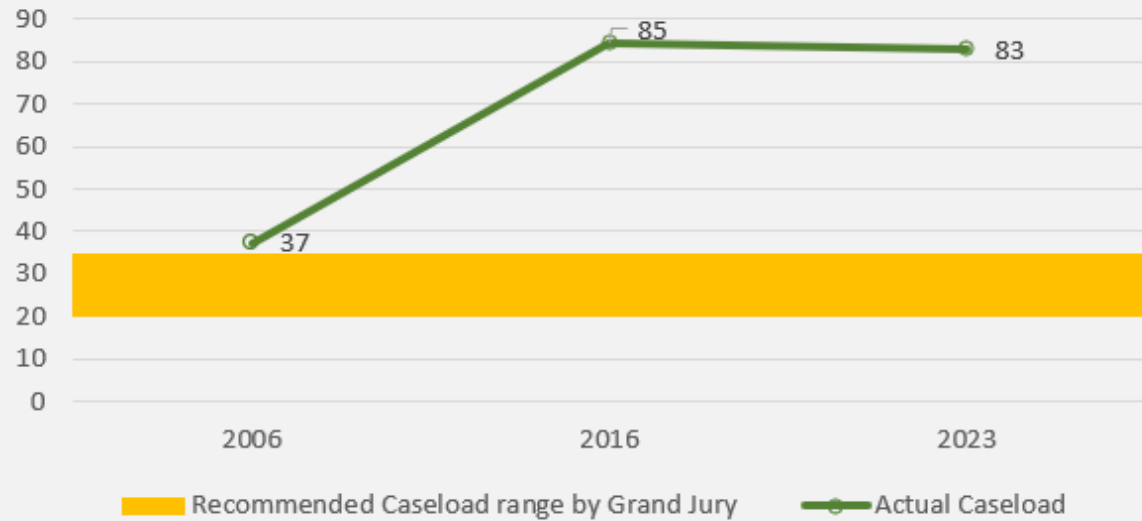
In the past 17 years, the number of conservatees has grown 33% but the number of deputies to care for the conservatees has reduced by 60%.



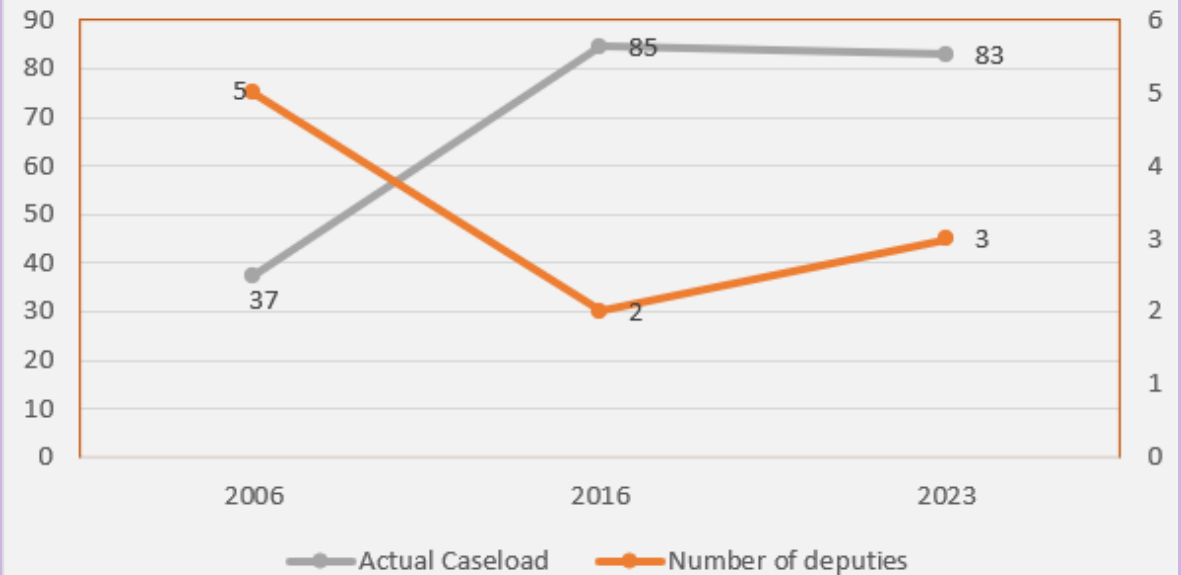
Caseloads 300% above Grand Jury's recommended level



Actual deputy caseload vs. Grand Jury recommended caseload range



Average Caseload and Number of deputies



Challenges for Public Guardian

Unable to fully complete 2016 Internal Co Audit Corrective Action Plan due to inadequate deputized staffing.

Unable to fulfill 2020 Grand Jury recommendations for manageable PG Deputy caseload sizes.

Deputy caseloads are **3 times** the recommended level for proper care of conservatees.

High turnover in PG Deputy positions due to burnout and stress. **300% turnover** in past 7 years.

Adequate training time for Deputy positions is 2 years. High turnover results in new Deputies being tasked to make major decisions with limited experience.

High caseloads result in errors by PG Deputies pertaining to conservatee safety, needs, and protection of assets.

Risk to County as a result of errors due to inadequate staffing.

The Future of Public Guardian



Questions

- Laurie Haas
- (530) 666-8102
- Laurie.Haas@yolocounty.org

Thank you