

# **Yolo County Western Slope Parks & Recreation**

Communities of Rumsey, Guinda, Brooks,  
Capay, Esparto, and Madison

---

**Elizabeth Castro Kemper**  
February 3, 2009  
Yolo LAFCO

# What is LAFCO?



## – Local Agency Formation Commission

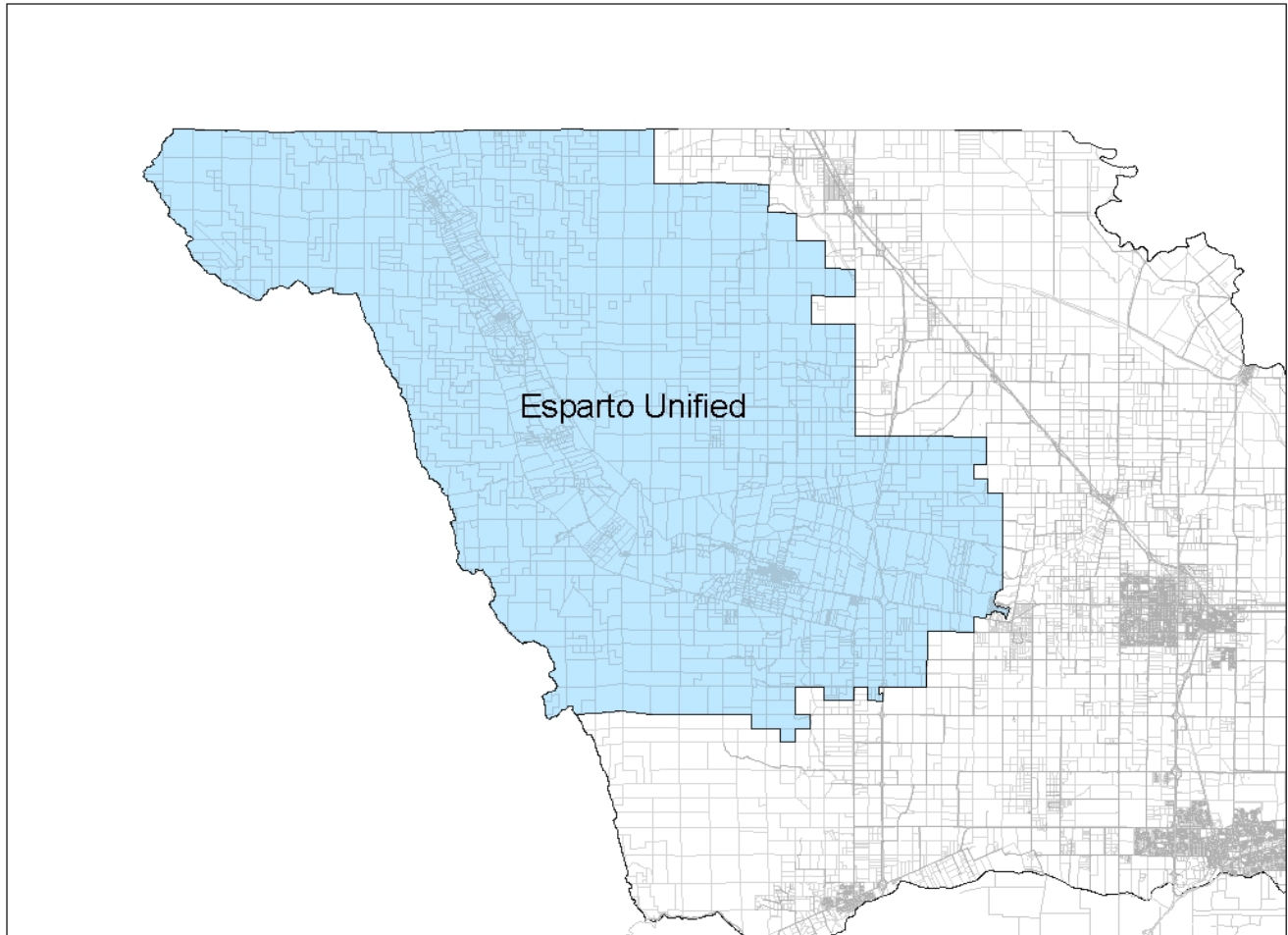
- Independent regulatory commission in every county in California
- Controls the boundaries of cities and most special districts: formations, consolidations, annexations, reorganizations, detachments, dissolutions
- Main purposes: prevent urban sprawl, encourage efficient provision of services, protect agricultural land

# GOAL TODAY?

- Explore possible organizational options to provide consolidated park services in the Western Yolo Slope region.



# Esparto School District boundaries



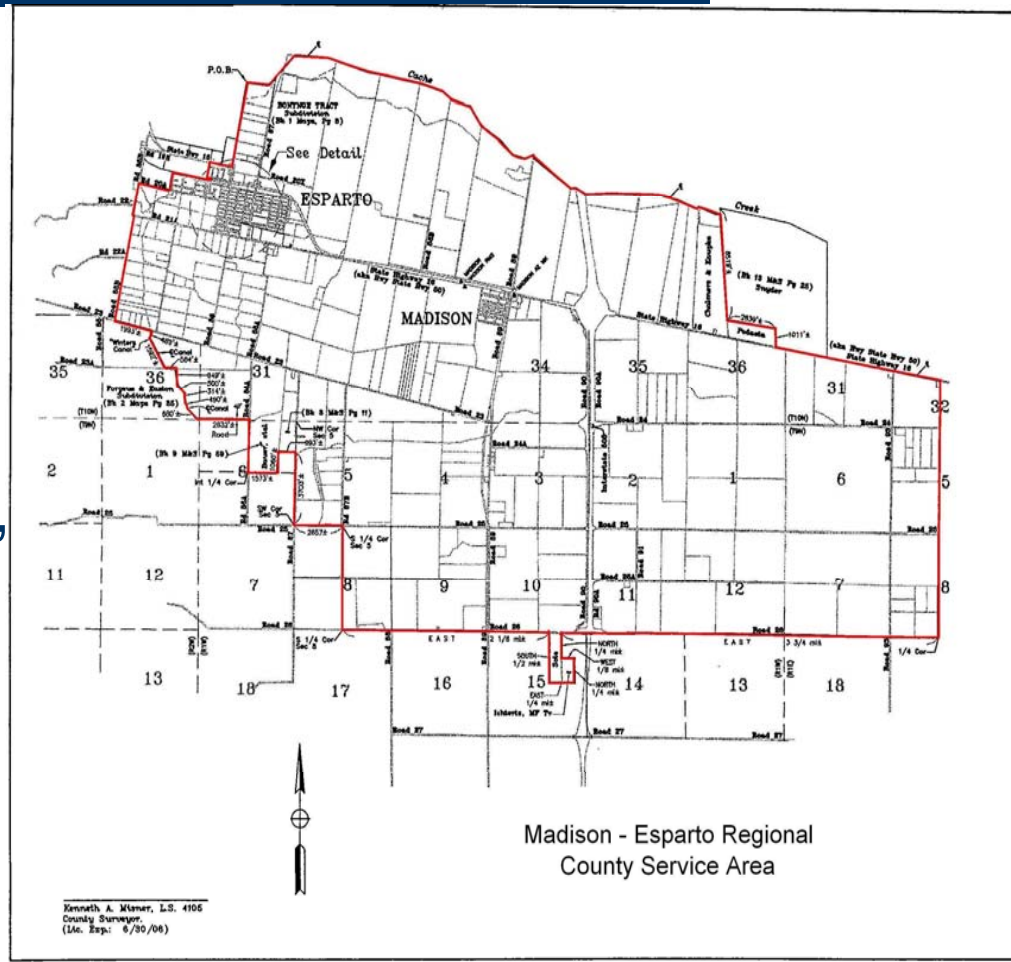
# **Government entities in West Yolo Area with current parks authority**



# Madison-Esparto County Service Area (MERCSA) (dependent district)

## Responsibilities:

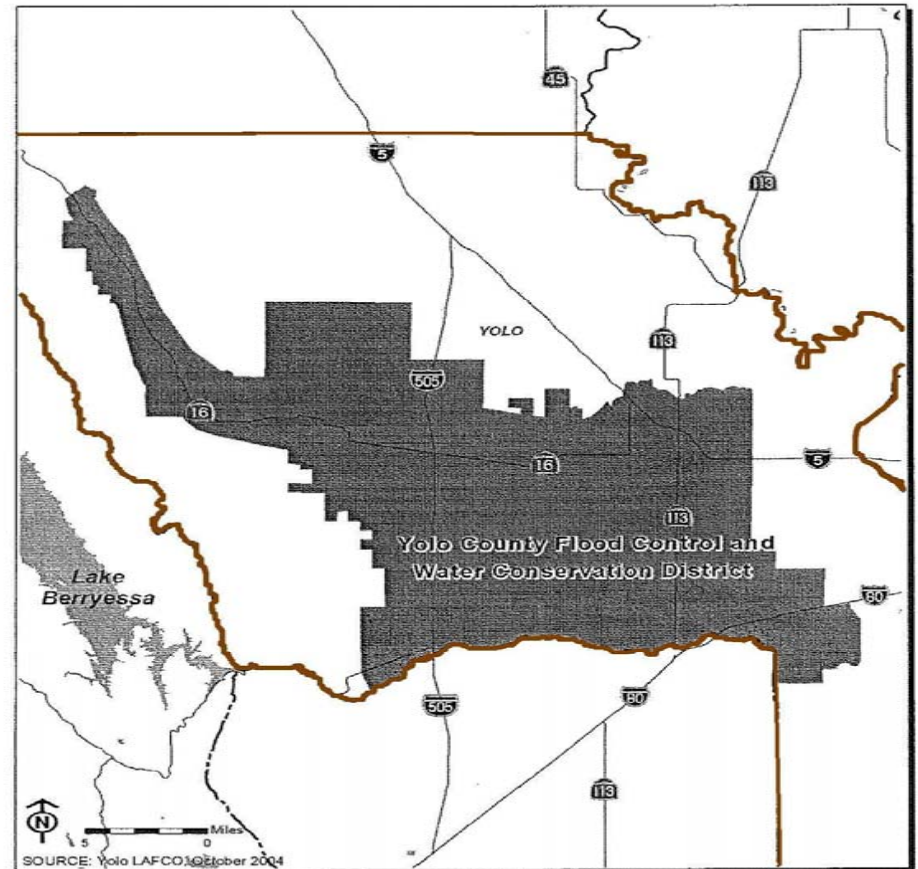
- Soil conservation and drainage control services throughout MERCSA
- Local park, recreation, or parkway facilities and services
- Zone of benefits



# Yolo County Flood Control & Water Conservation District (Independent)

## Responsibilities:

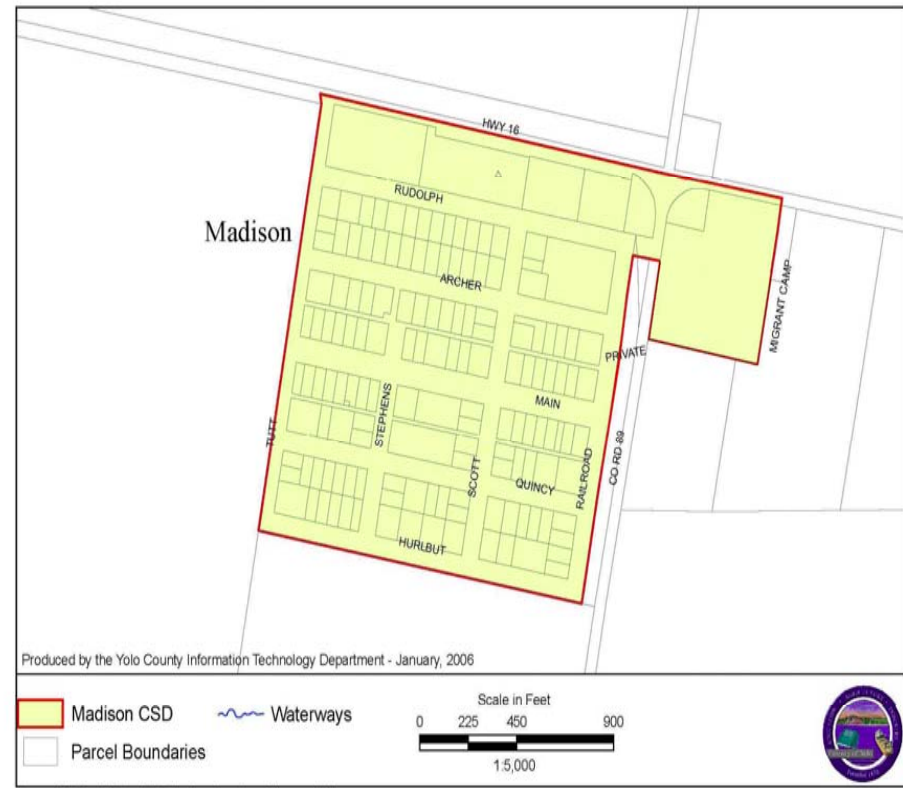
- Flood Control
- Agricultural and wholesale municipal water
- Recreation
- Hydroelectric power generation
- Zones of benefit



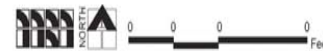
# Madison Community Services District (Independent District)

## Responsibilities:

- water for domestic use, irrigation, sanitation, industrial use, fire protection, and recreation
- collection, treatment or disposal of sewage and waste
- parks & recreation



Source: Yolo County Information Technology Department - January, 2006.



Michael Brandman Associates  
32200001 • 05/2008 | 1\_community\_services\_district.pdf

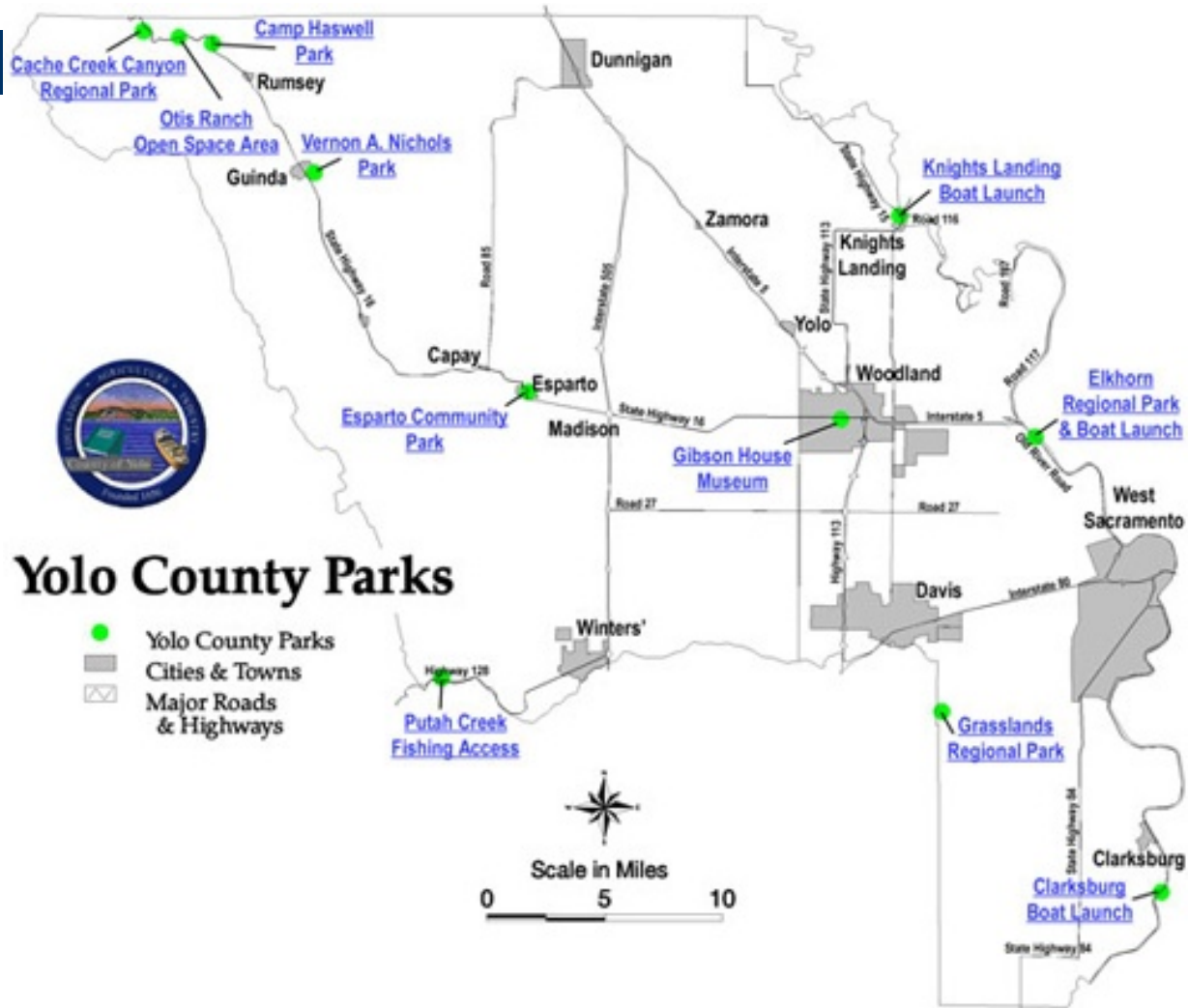


Figure 1  
Madison Community Services District Map

COUNTY OF YOLO LAFCO • MADISON COMMUNITY SERVICES DISTRICT  
MUNICIPAL SERVICE REVIEW AND SPHERE OF INFLUENCE UPDATE STUDY



# County of Yolo Parks & Resources



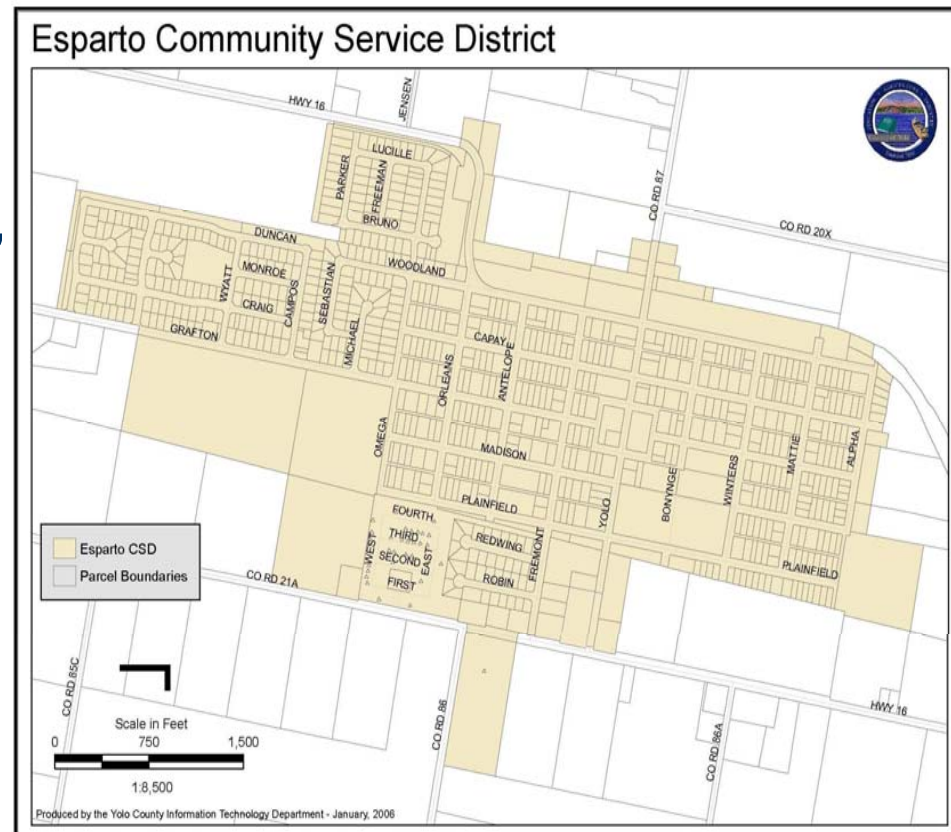
# Other entities that can have Parks authority



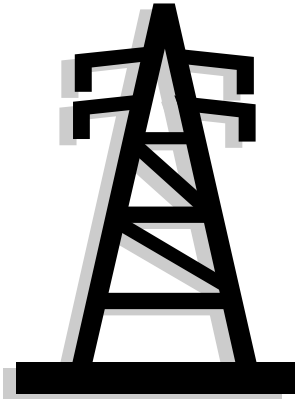
# Esparto Community Services District (Independent District)

## Current Responsibilities:

- water for domestic use, irrigation, sanitation, industrial use, fire protection, and recreation
- collection, treatment or disposal of sewage and waste
- Street lighting (added by vote in 1970)



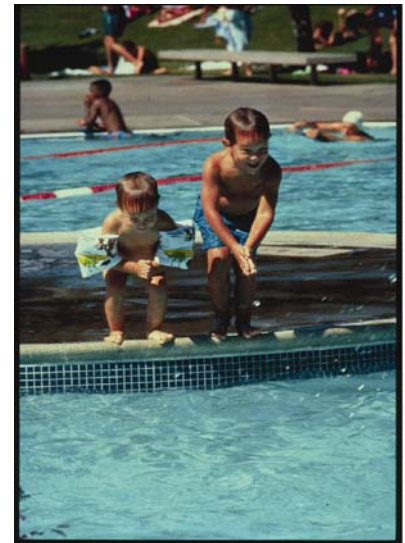
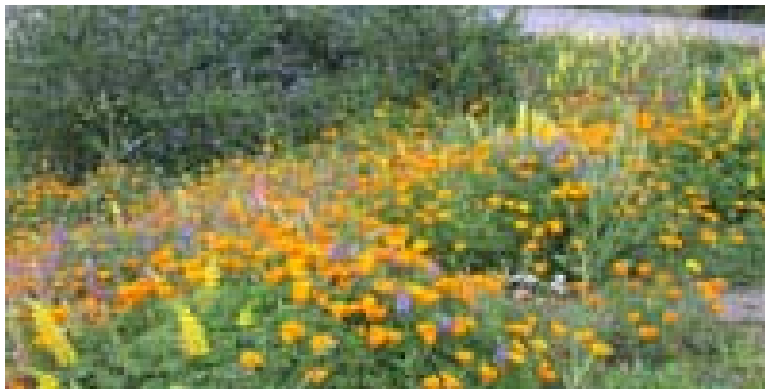
## Public Utility District (Independent)



- Infrastructure & operation of utilities (light, water, power, heat, transportation, communication technology, telephone, and garbage, waste & sewage services)
- Fire department, street lighting system or road drainage and paving
- Parks, playgrounds, golf courses, swimming pools, recreation & public use buildings

# Recreation & Park District

Community Recreation, include parks and open space, parking , transportation and acquisition, construction, operation & maintenance of such facilities both inside & beyond the district's boundaries.



# What it takes?!

- Community Involvement
- District Cooperation
- Volunteers
- Funding
- Process
  - Registered voter petition
  - District or County resolution



# Questions & Answers

- [www.yololafco.org](http://www.yololafco.org)

