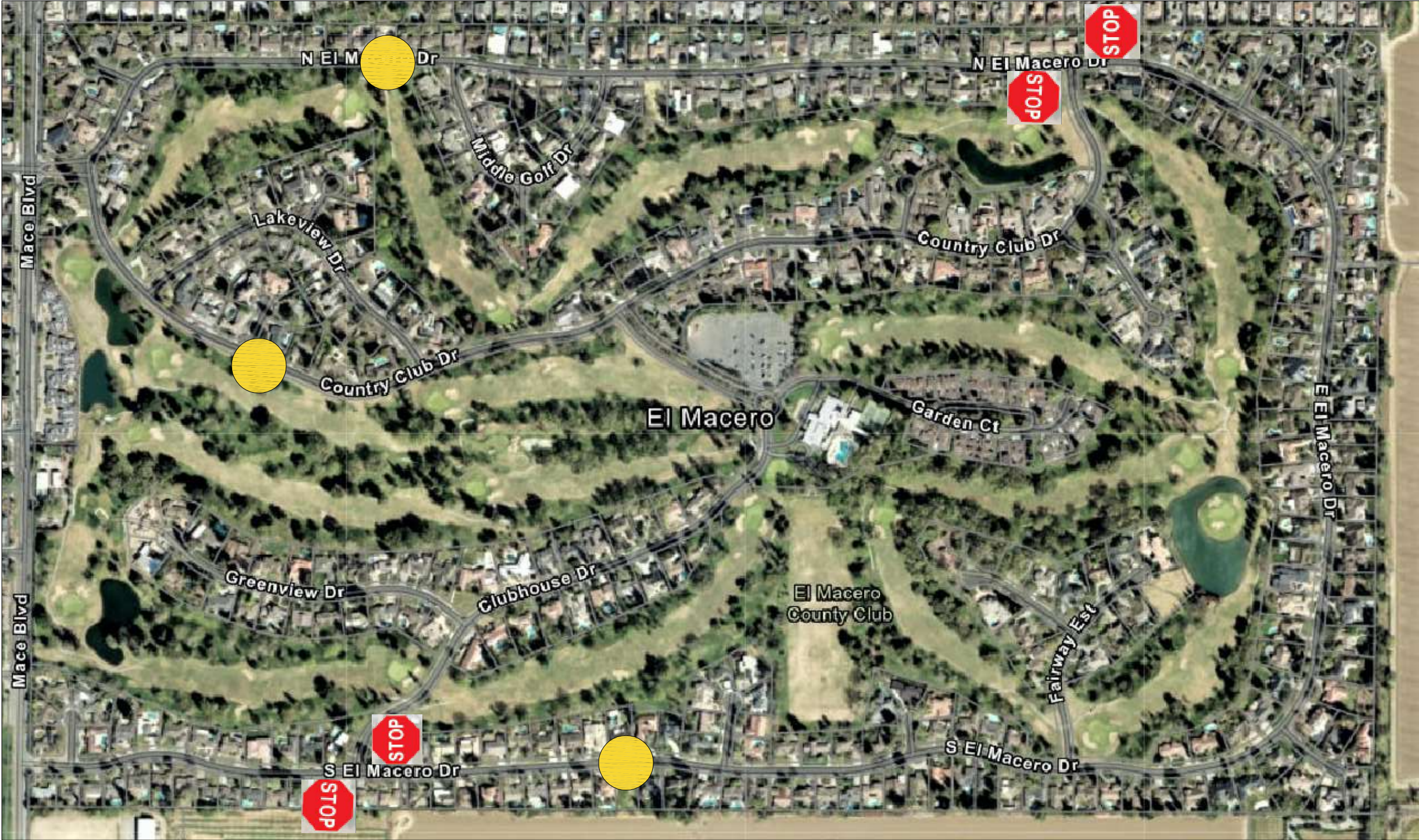


COUNTY OF YOLO  
PUBLIC WORKS DIVISION



EL MACERO TRAFFIC CALMING IMPROVEMENT PLANS



PROJECT LOCATION  
NOT TO SCALE



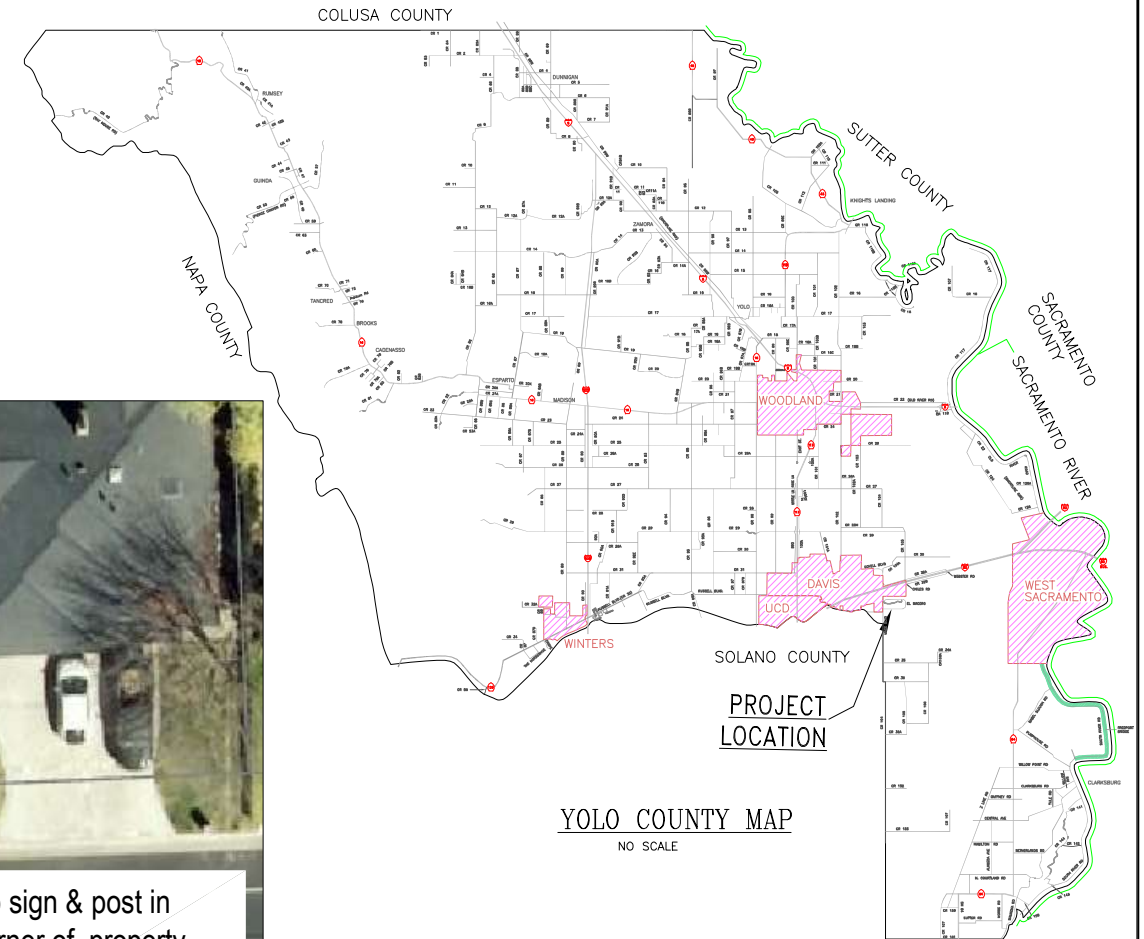
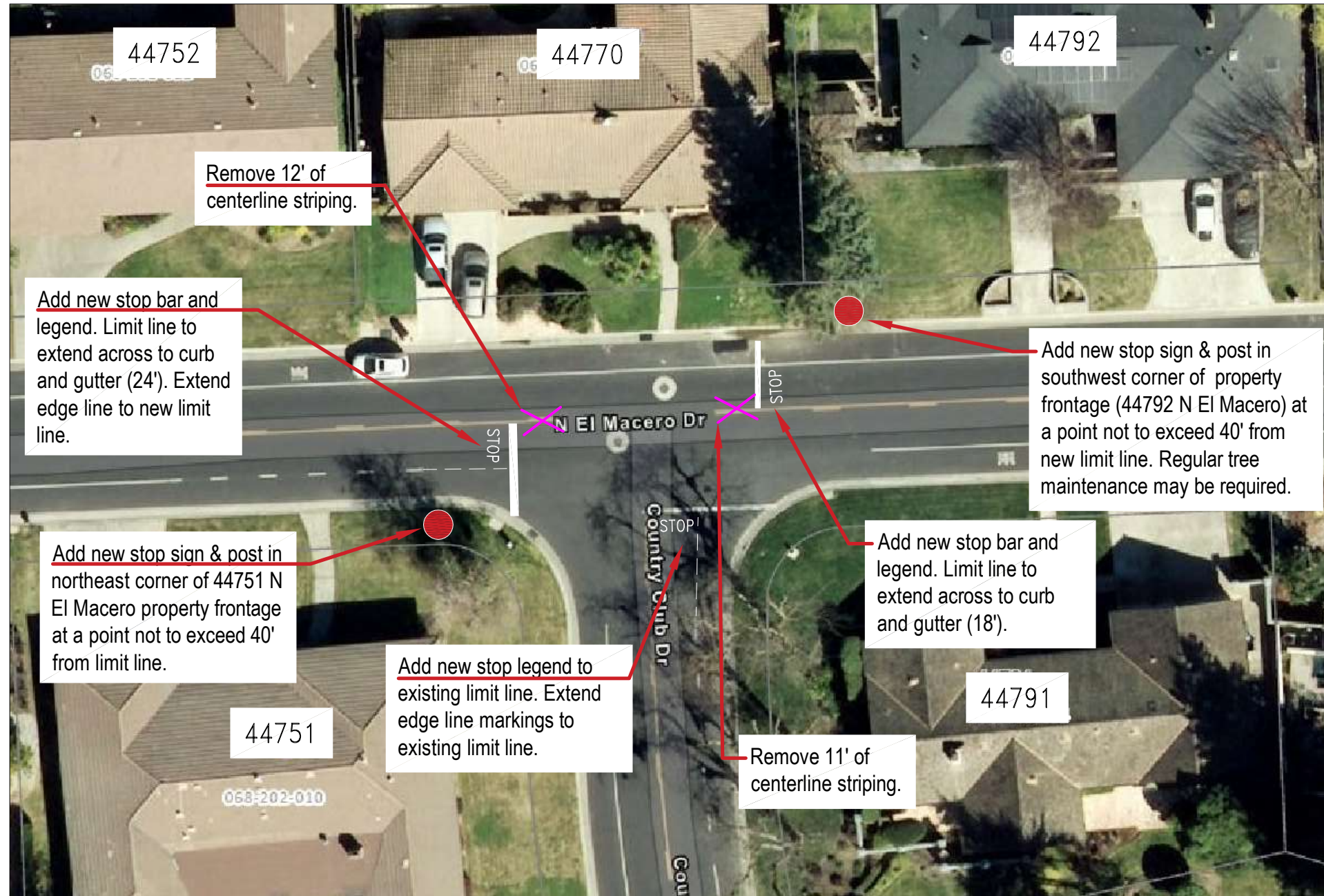
Legend

-  New Stop Sign Locations
-  Vehicle Speed Feedback Sign Locations



### COUNTY OF YOLO PUBLIC WORKS DIVISION

## ALL-WAY STOP AT INTERSECTION OF NORTH EL MACERO DR & COUNTRY CLUB DR



YOLO COUNTY MAP  
NO SCALE

 STOP SIGN

\*\* Final sign placements are dependent on utility alert markings.

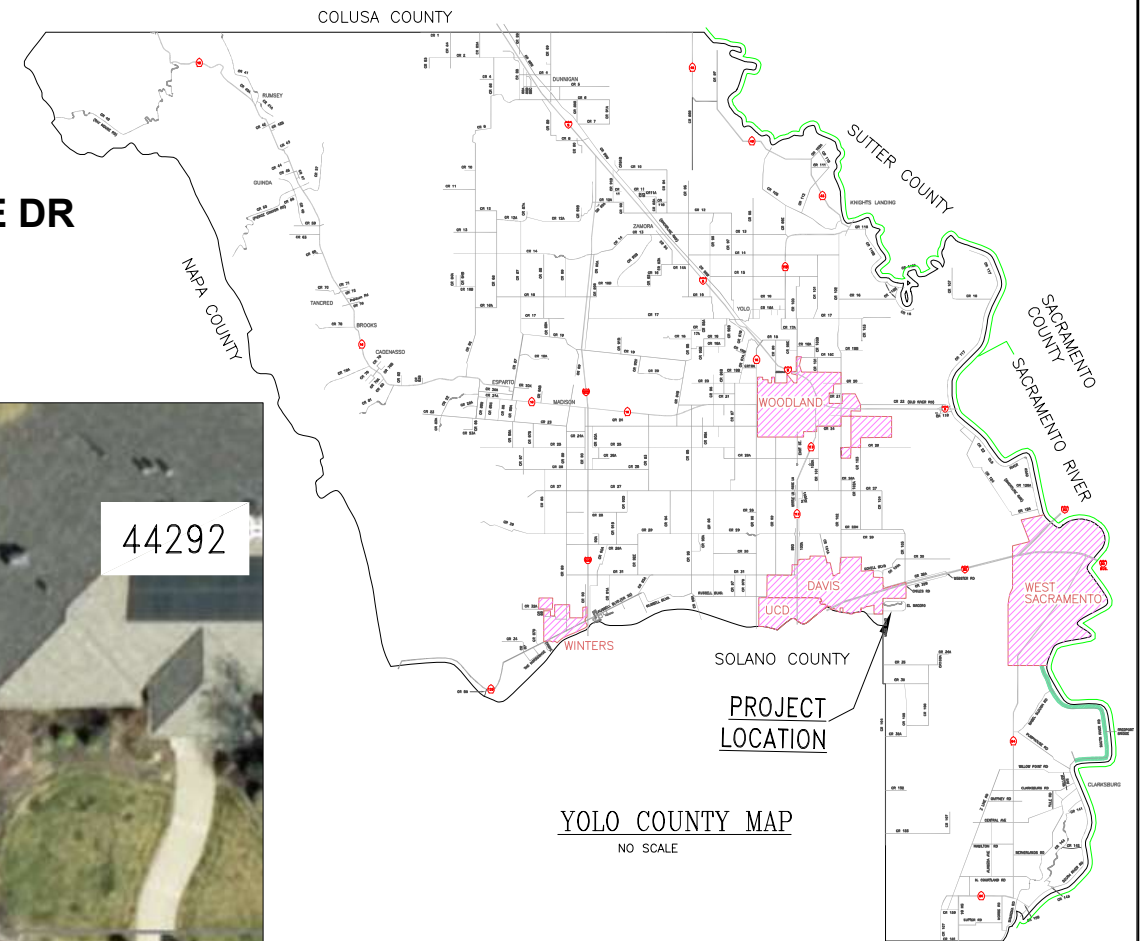
PROJECT LOCATION  
NOT TO SCALE





COUNTY OF YOLO  
PUBLIC WORKS DIVISION

ALL-WAY STOP AT INTERSECTION OF SOUTH EL MACERO DR & CLUBHOUSE DR



- STOP SIGN
- STOP AHEAD SIGN

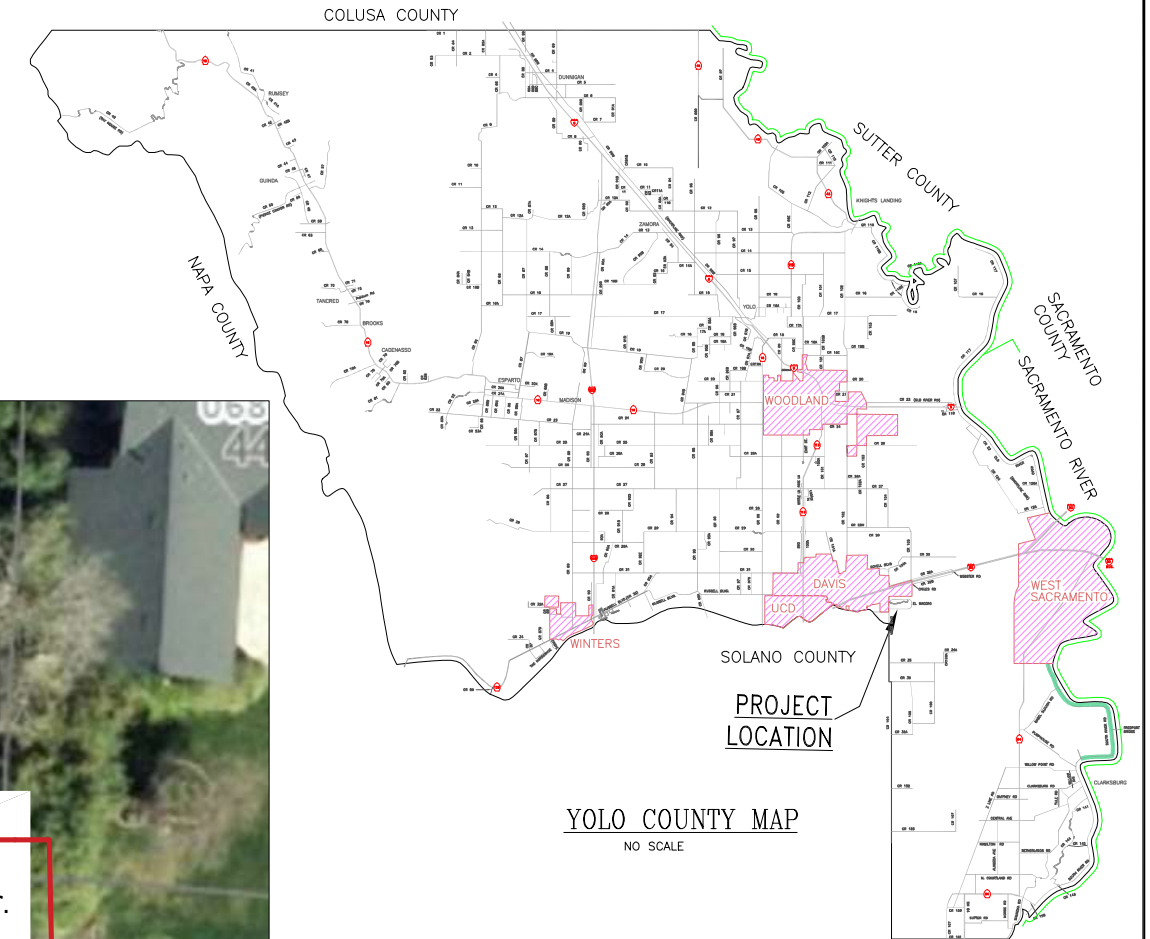
PROJECT LOCATION  
NOT TO SCALE



\*\* Final sign placements are dependent on utility alert markings.



COUNTY OF YOLO  
PUBLIC WORKS DIVISION  
INSTALLING A VEHICLE SPEED FEEDBACK SIGN ON SOUTH EL  
MACERO DRIVE



Vehicle Speed Feedback Sign

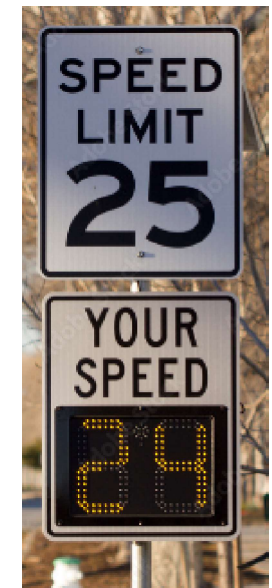
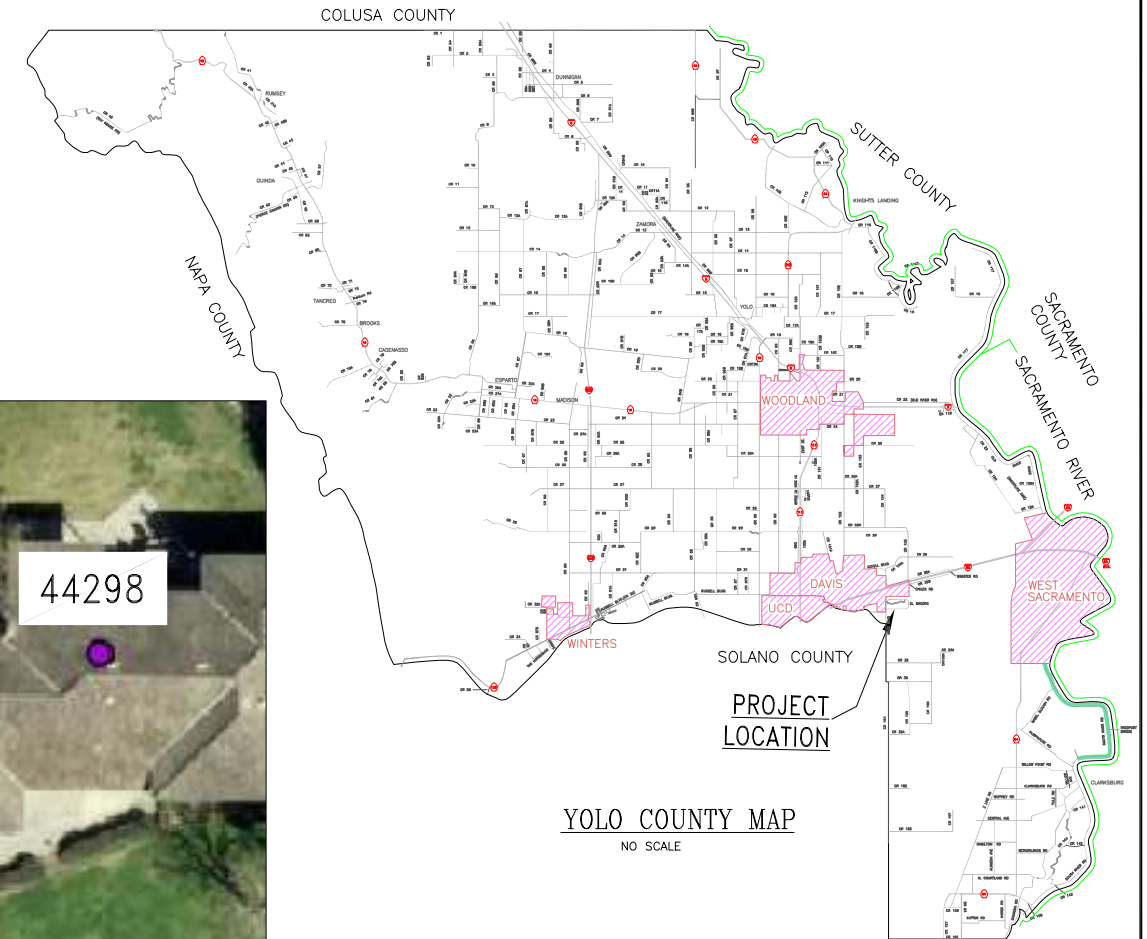
\*\*Final sign placement is dependent on utility alert markings.

PROJECT LOCATION  
NOT TO SCALE





COUNTY OF YOLO  
PUBLIC WORKS DIVISION  
INSTALLING A VEHICLE SPEED FEEDBACK SIGN ON NORTH EL  
MACERO DRIVE



Vehicle Speed Feedback Sign

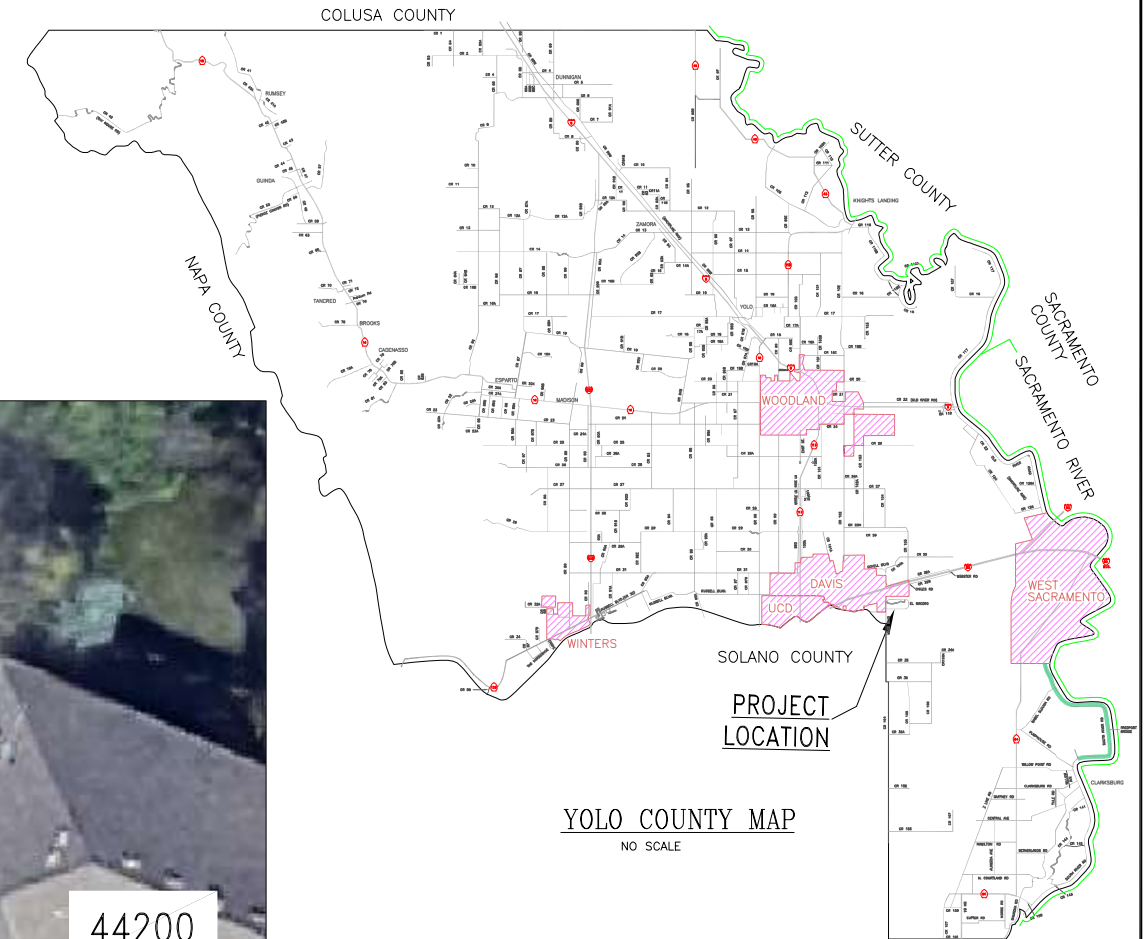
\*\*Final sign placement is dependent on utility alert markings.

PROJECT LOCATION  
NOT TO SCALE





COUNTY OF YOLO  
PUBLIC WORKS DIVISION  
INSTALLING A VEHICLE SPEED FEEDBACK SIGN ON COUNTRY CLUB DRIVE



Vehicle Speed Feedback Sign

\*\*Final sign placement is dependent on utility alert markings.

PROJECT LOCATION  
NOT TO SCALE

