

JOHN BENCOMO
DIRECTOR

County of Yolo

PLANNING, RESOURCES AND PUBLIC WORKS DEPARTMENT

292 West Beamer Street Woodland, CA 95695-2598 (530) 666-8775 FAX (530) 666-8728
www.yolocounty.org

Cache Creek Technical Advisory Committee Summary Minutes January 9, 2006

- Members in Attendance:** Kevin O'Dea, Jeff Hart, and Geoff Schladow.
- County Staff:** Dimitrios Georges, Brett Williams, and Petrea Marchand.
- Others in Attendance:** Jacob Sheres, Mike Martinez, Ben Adamo, Sally Barrett, Max Stevenson, Tom Kimball, Mary Kimball, Dave Pratt, Robert MacArthur, Jennifer Drewitz, Bill Cruickshank, Barry Cavanna, Jack White, Jeanne Kuttel, Deborah Condon, Jeannette Wrynski, John Watson, Jan Lowrey, Duane Chamberlain.
- Members Absent:** None.
-

1. CALL TO ORDER

The meeting was called to order by Chair O'Dea at 10:09 AM. Chair O'Dea introduced and welcomed Julia McIver, new Deputy Director of Parks and Natural Resources Management Division.

2. PUBLIC COMMENTS

Jennifer Drewitz, with the Yolo County RCD announced that the RCD had been awarded a grant from the Wildlife Conservation Board to coordinate the removal of invasive plants along 11 miles of Cache Creek in the upper watershed. She advised that the RCD would make a presentation to the TAC and the public at a future date.

Tim O' Halloran made a brief presentation on the impacts of the heavy rains in late December 2005 and early January 2006. He showed several slides of the erosion and flood damage to the Moore Siphon and Alder Bypass. He advised that the flood control district will be working with the County to rectify the damaged as the sites are near Cache Creek.

3. ADOPTION OF MINUTES

The minutes of the November 14, 2005 meeting were adopted.

4. STAFF UPDATE

- 4.1 Update on Yolo County Conservation Program's (YCCP) assistance in November to State Department of Water Resources staff to repair the Rumsey Gauge: YCCP assisted DWR staff with labor to install the necessary piping in the creek bed. The gauge has been down for some time and County staff coordinated with DWR staff to provide YCCP assistance. Rumsey gauge data can now be viewed on line (<http://cdec.water.ca.gov/cgi-progs/queryFx?RUM>). The project was an excellent cooperative partnership and a letter of thanks was sent by DWR to Supervisor Thomson, Chairwoman of the Board of Supervisors.

- 4.2 Update on gravel mining inspections completed in December by staff and schedule for preparation of 2005 annual mining reports: Staff reported that all of the gravel mines were inspected in late December and staff was in the process of preparing the annual gravel mining report for the Planning Commission and submittal to the State Department of Conservation.
- 4.3 Status of County Parks and Open Space Master Plan: Staff advised that the Masterplan concepts had been approved by the Board of Supervisors in December 2005. The plan outlines the goals and policies of open space management throughout the County. The environmental document for CEQA compliance was under way and supplemental environmental review may be needed at a future date for individual projects proposed in the masterplan as they go through design development.
- 4.4 Update on Grube-Payne project: Staff advised the grading was completed and habitat restoration is planned for the spring of 2006. Jan Lowrey commented that the project handled the recent storms very well.
- 4.5 Report on issuance of a survey contract to RBF consulting to conduct cross sectional surveys at transects and stage/temperature gauge locations: Staff advised that RBF would be surveying all of the creek transects and stage/temperature gauge locations along the creek. The goal was to develop cross sectional profiles of the creek at these locations in order to provide the data necessary to prepare the yearly CCRMP report and gather data for a future HEC-RAS study. Survey data is manually collected in the creek bottom by a survey crew, so the flows will need to diminish before surveys can be conducted.
- 4.6 Announcement of Capay Open Space Park grant award: Staff announced that the State Department of Parks & Recreation has awarded a \$195,000 grant to Yolo County to implement the Phase 1 portions of the Capay Open Space (CR 85 and Cache Creek). The grant application was submitted by County to the State in late December, 2004 to the highly competitive Robert Z'berg-Harris urban open space and recreation program (non-urbanized areas). The program is funded through the California Clean Water, Clean Air, Safe Neighborhood Parks, and Coastal Protection Act of 2002 (Proposition 40).
- 4.7 Cache Creek Conservancy: Jan Lowrey, Executive Director announced that the Conservancy has applied for two grants to continue their efforts to eradicate invasives along Cache Creek. First, an application to the State Wildlife Conservation Board (will be considered at the WCB's February meeting), and secondly, an application to the CalFed Watershed Program.

5. COMMITTEE REPORTS:

None

6. REGULAR AGENDA:

- 6.1 Presentation by Jeanne Kuttel and Debra Condon of the State Department of Water Resources (DWR) regarding emergency levee repairs being considered on two critical erosion sites on Cache Creek (upstream of I-5 within the CCRMP): Debra Condon provided an overview of the existing efforts by the US Army Corps of Engineers along the Sacramento River, and the Federal-State (Department of Water Resources) bank protection partnership. Congress authorized the funding in the 1960 *Flood Control Act* under *Public Law 86-645* to repair erosion on the Sacramento River flood control project levee system. The program goals are "...to ensure that the flood control project continued to provide a design level of flood protection and to reduce the need for emergency levee repair, periodic dredging and loss of land due to bank erosion".

Jeanne Kuttel advised that of the twenty-four critical sites located in the Sacramento River watershed, three of the sites are located on levees associated with Cache Creek. The first and second sites are located 4,500 feet and 2,300 feet upstream of the I-5 bridge (respectively). The third site is located 3,800 feet downstream of the I-5 bridge. An additional nine levee sites downstream of the I-5 bridge are also being closely monitored by DWR for potential erosion.

Jeanne advised that fieldwork on the three critical sites was performed in December of 2005 and the data is now being analyzed for design development of the emergency levee repair project. She said that two initial concepts are being considered: one that utilizes crib walls and Gabion's (an expensive and environmentally time-consuming approach), and a second concept that utilizes "set-back" levees outside the current levees (a lower cost and less of an environmental impact).

Questions from both the TAC and staff centered around the need for levees on the north side of the creek when the problems with flooding were on the south side, the consideration of the removal of invasive plants as part of the project solution, and use of sediments in the gravel bars near the site to construct the proposed DWR levees. Debra Condon stated that the levees protect the farmland on the North side of Cache Creek and that they would be open to additional considerations of the removal of invasive plants and the use of in channel resources on the project. Geoff Schladow asked if there was a consideration to breach the old levees after construction of the new levees to allow for deposition of material to promote natural revegetation. Debra Condon stated that the concept has not been discussed as mitigation is not required as part of the project. However, she stated that the planting of native grasses has been considered.

Petrea Marchand stated that the County would like to recommend that DWR should work with the County to identify sites in the creek near the three proposed emergency levee repair sites to provide fill for the project. She suggested that DWR consider the removal of invasives and revegetation of the areas cleared of invasives as part of the work on the project sites. Jan Lowrey suggested that a partnership should be formed early on this process to provide fill material for the project so that local resources were utilized.

Bob MacArthur stated that most of the erosion on the creek occurs at times when the flow isn't at its highest. Medium to low sustained flows that impact about one third the distance up the bank causes the most substantial erosion problems.

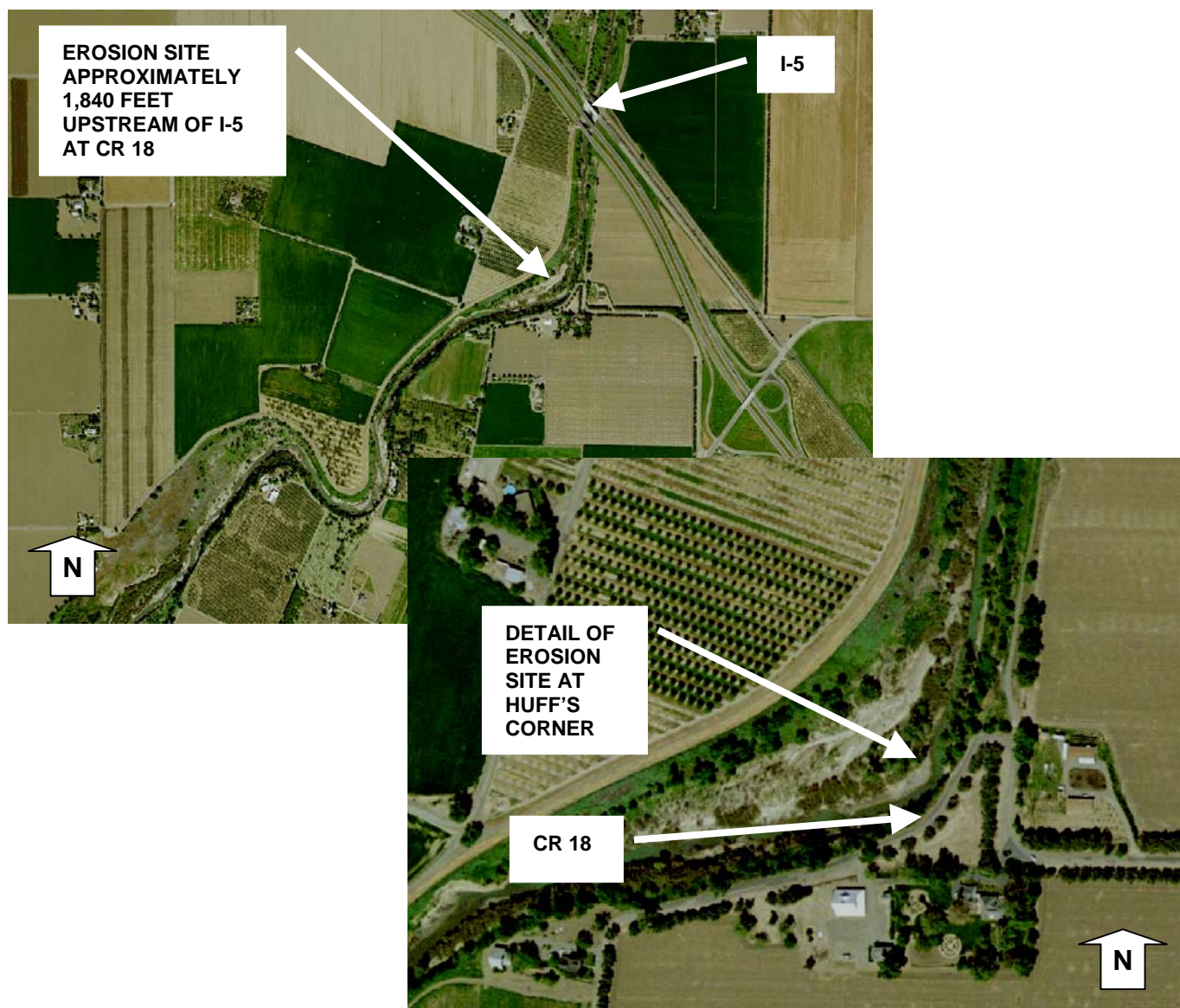
The TAC, by a unanimous vote recommended that DWR consider the following recommendations for design of the project:

1. The removal of Arundo, Tamarisk and other invasives as an integral part of the project.
2. Utilize sediment from in channel resources near the sites for levee fill material.
3. Enhancement of wildlife habitat and the use of native vegetation for bioengineering.
4. Better consideration of protecting the "toe" or base of the proposed levees.
5. Retain and breach the existing levee to allow for the deposition of silt between the existing and new levees during periods of high creek flow.
6. Additional consideration of the hydrological and environmental effect of the proposed levees on other levees in the vicinity.

Jeanne stated that the end of the environmental review process is quickly approaching (end of February 2006) and construction is scheduled to begin in September of 2006.

DWR representatives welcomed continued further public input into the process.

- 6.2 Status of conditions at Huff's corner along Cache Creek: Rick Moore, Assistant Public Works Director stated that the levees near the site are designed to protect the Woodland area from a 5-10 year flood event. The creek banks adjacent to County Road 18 are severely eroded, and that the roadway has been impacted. Rick said that he has been working with Parks and Natural Resources staff to come up with a solution to the issue, including how to fund the erosion control repairs. He has explored the possibility of Federal Natural Resources Conservation Service (NRCS) staff being involved in the design. Debra Condon from DWR advised that DWR has responsibility of the levees in the area, and that Russ Eckman, their field supervisor could be contacted to verify their jurisdiction. Chair O'Dea suggested that staff coordinate with DWR staff to verify jurisdiction of the levees in the area.



- 6.3 Lower Hoppin and Jesus Maria study by Kevin O'Dea: Chair O'Dea reported that he has been analyzing the past Digital Terrain Models (DTM'S) and is preparing a proposal on the past history of the reach.

6.4 Voluntary Oak Woodlands Management Plan development and TAC letter of support: Jeff Hart and Chair O'Dea agreed unanimously that the TAC should support Yolo County's efforts to apply for a grant to secure funding through the State Wildlife Conservation Board to prepare a county wide Oak Woodlands Management Plan. Chair O'Dea will be coordinating with staff on preparation of the letter of support. Geoff Schladow was not present for the vote.

6.5 Review of Cache Creek Annual Status Report DRAFT outline:

6.5.1 - Chapter 3: Sediment Transport and Bank Erosion

6.5.2 - Chapter 4: Vegetation & Wildlife

6.5.3 - Chapter 5: Administration

The TAC and staff reviewed the outline and the assigned sections. Chair O'Dea suggested that portions of the text be provided to staff for coordination as the TAC completes the text. TAC members would contact staff on an ongoing basis as necessary to coordinate the report.

7. ADJOURNMENT:

The next regular meeting of the TAC is tentatively scheduled for February 6, 2006.

The meeting was adjourned by Chair O'Dea at 12:36 PM.