



# County of Yolo

## PLANNING AND PUBLIC WORKS DEPARTMENT

John Bencomo  
DIRECTOR

292 West Beamer Street  
Woodland, CA 95695-2598  
(530) 666-8775 FAX (530) 666-8728  
[www.yolocounty.org](http://www.yolocounty.org)

## CLARKSBURG GENERAL PLAN CITIZENS ADVISORY COMMITTEE

### AGENDA

Thursday, March 12, 2009 - 7:00 PM

Clarksburg Library Activity Room  
52915 Netherlands Road, Clarksburg, CA

1. **7:00 PM CALL TO ORDER**
2. **APPROVAL OF MINUTES**  
February 12, 2009
3. **INFORMATION**
  - a. Community Forum about Housing and Homelessness (Bridget DeJong)
  - b. Green Waste Options (Marissa Juhler, Division of Integrated Waste Management)
  - c. Preliminary Flood Insurance Maps from FEMA (David Morrison)
4. **ACTION**
  - a. Zone File #2008-062: Lot line adjustment, zone boundary adjustment, and Williamson Act contract amendment to modify parcel lines between an A-1 (Agricultural General) and A-P (Agricultural Preserve) zoned parcel. The parcels are located at the intersection of Jefferson Boulevard and North Courtland Road, approximately four miles south of Clarksburg. The A-1 parcel was previously part of the Sacramento Northern Railway (APN: 043-060-32). The A-P parcel contains a single family home, detached garage, shop, and a pump house (APN: 043-060-01). The lot line adjustment will result in no net loss of acreage to either parcel, but will provide a more typical and practical parcel layout. SEE ATTACHED MAP FOR MORE INFORMATION.
  - b. Update and possible appointments to Planning Commission subcommittee on advisory committee procedures.
5. **CORRESPONDENCE AND ANNOUNCEMENTS**
  - a. Sheriff's Department update
  - b. Fire Department update
  - c. School update
  - d. General Plan update (<http://www.yolocountygeneralplan.org>)
  - e. Ag Update
  - f. ND Cares ([http://baydeltaoffice.water.ca.gov/sdb/bdcp/index\\_bdcp.cfm](http://baydeltaoffice.water.ca.gov/sdb/bdcp/index_bdcp.cfm))
6. **PUBLIC REQUESTS**

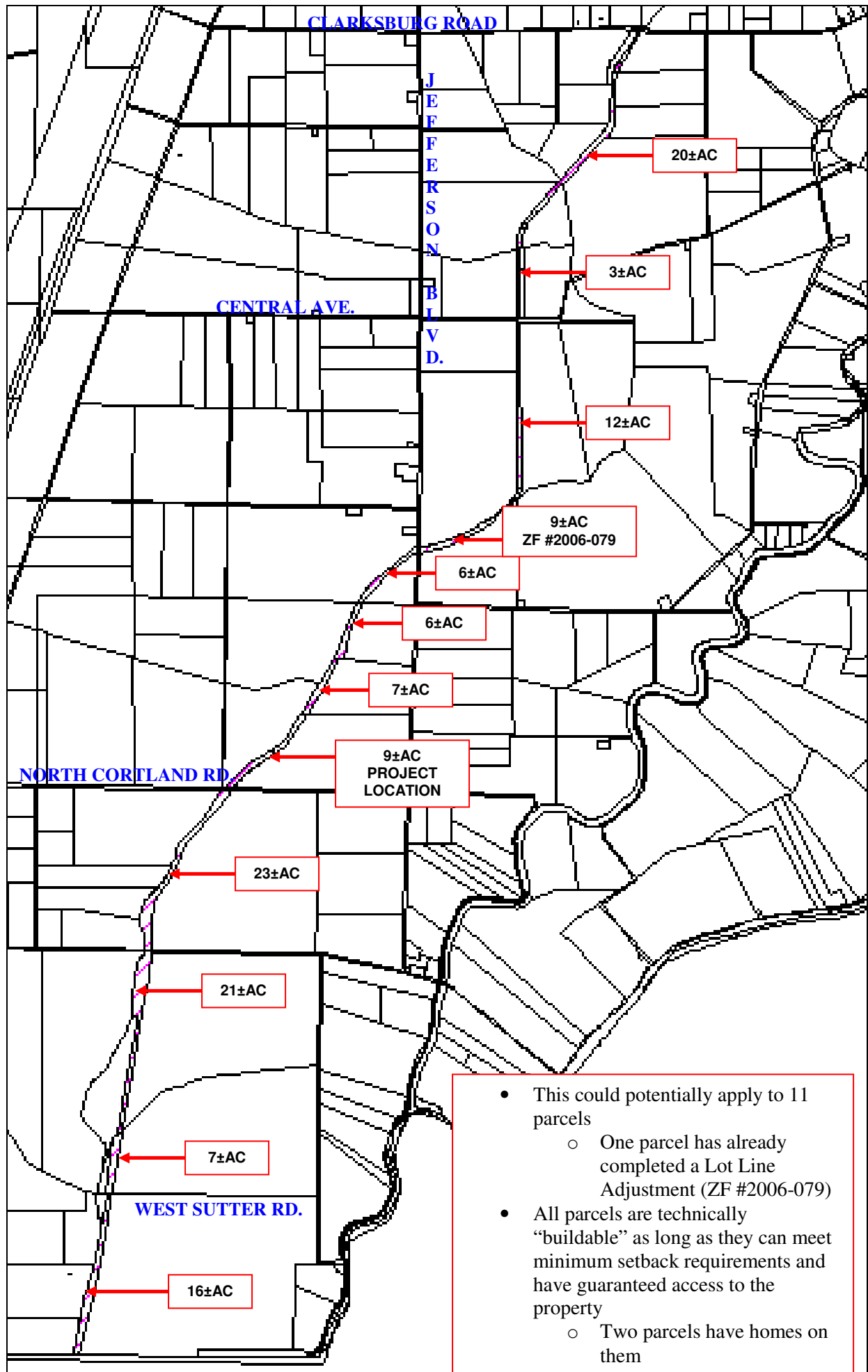
The opportunity for members of the public to address the Advisory Committee on any subject, but not relative to items on the present agenda. The Chair reserves the right to impose a reasonable limit on the time afforded to any individual speaker.

## 7. FUTURE AGENDA ITEMS

## 8. 9:00 PM ADJOURNMENT

**\*\*\* NOTICE \*\*\***

*If requested, this agenda can be made available in appropriate formats to persons with a disability, as required by Section 202 of the Americans with Disabilities Act of 1990 and the Federal Rules and Regulations adopted in implementation thereof. Persons seeking an alternative format should contact the Yolo County Planning and Public Works Department. In addition, any persons with a disability who require a modification or accommodation, including auxiliary aids or services, in order to participate in a public meeting should telephone or otherwise contact Eric Parfrey as soon as possible and preferably at least 24 hours prior to the meeting. Eric Parfrey may be reached at 530-666-8043 or at the following address: Yolo County Planning and Public Works Department, 292 West Beamer Street Woodland, CA 95695.*



- This could potentially apply to 11 parcels
  - One parcel has already completed a Lot Line Adjustment (ZF #2006-079)
- All parcels are technically “buildable” as long as they can meet minimum setback requirements and have guaranteed access to the property
  - Two parcels have homes on them