

APPENDIX C

**TRANSPORTATION AND CIRCULATION
DATA**

**APPENDIX C
YOLO COUNTY GENERAL PLAN
EXISTING AM PEAK HOUR LOS THRESHOLDS, TRAFFIC VOLUMES, AND LOS**

ROADWAY	SEGMENT	JURISDICTION LOS THRESHOLD	CMP LOS THRESHOLD	PEAK HOUR COUNT	LOS ¹
Interstate 5 Northbound					
	1. Colusa County Line to Interstate 505	D	D	700	A
	2. Interstate 505 to County Road 13	D	D	500	A
	3. County Road 13 to State Route 113 (East)	D	D	1,060	A
	4. State Route 113 (East) to County Road 102	D	E	1,520	B
	5. County Road 102 to Sacramento County Line	D	D	1,820	B
Interstate 5 Southbound					
	1. Colusa County Line to Interstate 505	D	D	760	A
	2. Interstate 505 to County Road 13	D	D	640	A
	3. County Road 13 to State Route 113 (East)	D	D	1,130	B
	4. State Route 113 (East) to County Road 102	D	E	1,350	B
	5. County Road 102 to Sacramento County Line	D	D	1,690	B
Interstate 505 Northbound					
	1. Solano County Line to State Route 128	D	D	330	A
	2. State Route 128 to State Route 16	D	D	320	A
	3. State Route 16 to County Road 14	D	D	200	A
	4. County Road 14 to Interstate 5	D	D	200	A
Interstate 505 Southbound					
	1. Solano County Line to State Route 128	D	D	570	A
	2. State Route 128 to State Route 16	D	D	360	A
	3. State Route 16 to County Road 14	D	D	230	A
	4. County Road 14 to Interstate 5	D	D	130	A
Interstate 80 Eastbound					
	1. Solano County Line to Mace Boulevard	E	E	4,110	C
	2. County Road 32A to U.S. 50	E	E	5,160	D
Interstate 80 Westbound					
	1. Solano County Line to Mace Boulevard	E	E	4,120	C
	2. County Road 32A to U.S. 50	E	E	5,280	D
State Route 113 Northbound					
	1. Solano County Line to Covell Boulevard	E	E	1,030	A
	2. Covell Boulevard to Gibson Road	E	D	770	A
	3. Gibson Road to Interstate 5	E	C	430	A
State Route 113 Southbound					
	1. Solano County Line to Covell Boulevard	E	E	2,140	C
	2. Covell Boulevard to Gibson Road	E	D	1,440	B
	3. Gibson Road to Interstate 5	E	C	500	A

Notes:

¹ LOS (Level of Service) based on peak hour roadway segment thresholds developed using the Highway Capacity Manual methodology.

**APPENDIX C
YOLO COUNTY GENERAL PLAN
EXISTING PM PEAK HOUR LOS THRESHOLDS, TRAFFIC VOLUMES, AND LOS**

ROADWAY	SEGMENT	JURISDICTION LOS THRESHOLD	CMP LOS THRESHOLD	PEAK HOUR COUNT	LOS¹
Chiles Road/County Road 32B					
	1. Mace Boulevard to Webster Road	C		250	C
Clarksburg Road					
	1. State Route 84 to South River Road	C		60	A
County Road 6					
	1. County Road 86 to Interstate 5	C		10	A
County Road 12A					
	1. County Road 85 to Interstate 505	C		10	A
County Road 12A/92/12					
	1. Interstate 505 to County Road 99W	C		10	A
County Road 13					
	1. Interstate 5 to State Route 113	C		110	A
County Road 14					
	1. County Road 85 to Interstate 505	C		40	A
	2. Interstate 505 to Interstate 5	C		90	A
County Road 16A					
	1. Interstate 5 to State Route 113	C		30	A
County Road 17					
	1. State Route 113 to County Road 102	C		110	B
County Road 19					
	1. County Road 87 to Interstate 505	C		70	A
	2. Interstate 505 to County Road 94B	C		60	A
County Road 21A					
	1. County Road 85B to State Route 16	C		150	B
County Road 23					
	1. County Road 85B to County Road 89	C		110	B
County Road 24					
	1. County Road 90 to County Road 95	C		80	A
	2. County Road 95 to County Road 98	C		210	C
County Road 27					
	1. Interstate 505 to County Road 95	C		90	B
	2. County Road 95 to County Road 98	C		110	B
	3. County Road 98 to State Route 113	C		170	B
County Road 28H					
	1. County Road 102 to County Road 105	C		70	A
County Road 29A/92E/29					
	1. Interstate 505 to County Road 95	C		30	A
County Road 29					
	1. County Road 95 to County Road 98	C		60	A
	2. County Road 98 to State Route 113	C	C	140	B
	3. State Route 113 to County Road 102	C	C	400	C
County Road 31					
	1. County Road 93A to County Road 95	C	C	390	C
	2. County Road 95 to County Road 98	C	C	490	C
County Road 32A					

	1. Mace Boulevard to County Road 105	C		180	B
	2. County Road 105 to Webster Road	C		260	C
County Road 85B					
	1. County Road 23 to County Road 21A	C		60	A
	2. County Road 21A to State Route 16	C		200	B
County Road 85					
	1. State Route 16 to County Road 12	C		40	A
County Road 85/8/86					
	1. County Road 12 to County Road 6	C		10	A
County Road 87					
	1. State Route 16 to County Road 14	C		20	A
County Road 89					
	1. County Road 29A to County Road 27	C		110	B
	2. County Road 27 to County Road 24A	C		130	B
	3. County Road 24A to State Route 16	C		100	B
County Road 94B					
	1. State Route 16 to County Road 19	C		60	A
County Road 98					
	1. Solano County Line to County Road 31	C	C	240	B
	2. County Road 31 to County Road 29	C	C	330	C
	3. County Road 29 to County Road 27	C	C	400	C
	4. County Road 27 to County Road 24	C	C	520	C
	5. County Road 24 to State Route 16	D	D	780	C
County Road 99					
	1. County Road 31 to County Road 27	C	C	180	B
	2. County Road 27 to Gibson Road	C	C	310	C
County Road 99W					
	1. County Road 8 to County Road 6	C		110	B
	2. County Road 6 to County Road 2	C		90	A
County Road 101A					
	1. Covell Boulevard to County Road 29	C		240	C
County Road 102					
	1. Covell Boulevard to County Road 29	C	C	650	C
	2. County Road 29 to County Road 27	C	C	560	C
	3. County Road 27 to County Road 24	C	C	490	C
	3. County Road 24 to Interstate 5	D	D	1,190	D
	5. Interstate 5 to County Road 17	C	C	490	C
	6. County Road 17 to State Route 113	C	C	610	C
County Road 105					
	1. County Road 32A to County Road 28H	C		60	A
Covell Boulevard					
	1. County Road 98 to State Route 113	E	D	1,670	D
	2. State Route 113 to County Road 102	E	E	1,820	D
	3. County Road 102 to Mace Boulevard	E	D	1,140	C
East Street					
	1. Gibson Road to Interstate 5	D	D	690	C
Gibson Road					
	1. County Road 98 to State Route 113	D	D	1,710	C
Harbor Boulevard					
	1. U.S. 50 to Reed Avenue	C	C	1,580	C
Jefferson Boulevard					
	1. Gregory Avenue to U.S. 50	D	C	1,890	D
Mace Boulevard					
	1. County Road 35 to County Road 32D	C		150	B

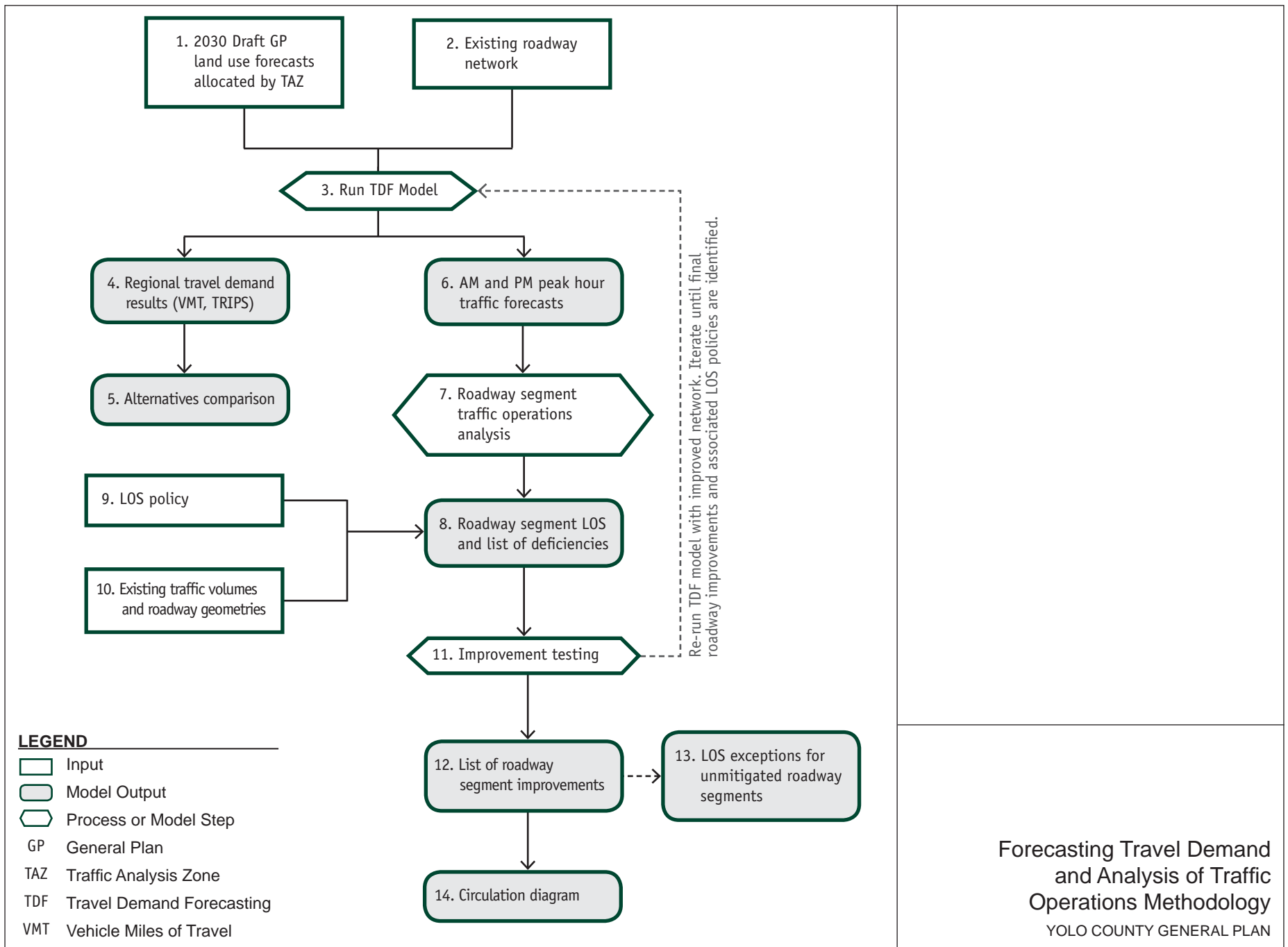
	2. County Road 32D to Interstate 80	E		2,330	D
Main Street					
	1. County Road 98 to State Route 113	D	D	2,120	D
Old River Road					
	1. County Road 127 to County Road 118	C		390	C
Railroad Avenue					
	1. State Route 128 to Winters City Limits	C	D	470	C
Reed Avenue					
	1. Interstate 80 to Jefferson Boulevard	C		1,470	C
Russell Boulevard					
	1. Interstate 505 to County Road 31	C	C	440	C
	2. County Road 98 to State Route 113	E		1,780	D
South River Road					
	1. Clarksburg Road to Freeport Bridge	C	C	200	C
	2. Freeport Bridge to Burrows Avenue	C		270	C
Willow Point Road					
	1. State Route 84 to South River Road	C		20	A
Interstate 5 Northbound					
	1. Colusa County Line to Interstate 505	D	D	1,040	A
	2. Interstate 505 to County Road 13	D	D	770	A
	3. County Road 13 to State Route 113 (East)	D	D	1,200	B
	4. State Route 113 (East) to County Road 102	D	E	1,280	B
	5. County Road 102 to Sacramento County Line	D	D	1,710	B
Interstate 5 Southbound					
	1. Colusa County Line to Interstate 505	D	D	810	A
	2. Interstate 505 to County Road 13	D	D	670	A
	3. County Road 13 to State Route 113 (East)	D	D	1,220	B
	4. State Route 113 (East) to County Road 102	D	E	1,690	B
	5. County Road 102 to Sacramento County Line	D	D	2,110	C
Interstate 505 Northbound					
	1. Solano County Line to State Route 128	D	D	710	A
	2. State Route 128 to State Route 16	D	D	490	A
	3. State Route 16 to County Road 14	D	D	290	A
	4. County Road 14 to Interstate 5	D	D	270	A
Interstate 505 Southbound					
	1. Solano County Line to State Route 128	D	D	560	A
	2. State Route 128 to State Route 16	D	D	460	A
	3. State Route 16 to County Road 14	D	D	300	A
	4. County Road 14 to Interstate 5	D	D	140	A
Interstate 80 Eastbound					
	1. Solano County Line to Mace Boulevard	E	E	4,320	C
	2. County Road 32A to U.S. 50	E	E	5,540	E
Interstate 80 Westbound					
	1. Solano County Line to Mace Boulevard	E	E	4,420	D
	2. County Road 32A to U.S. 50	E	E	5,110	D
State Route 113 Northbound					
	1. Solano County Line to Covell Boulevard	E	E	2,270	C
	2. Covell Boulevard to Gibson Road	E	D	1,530	B
	3. Gibson Road to Interstate 5	E	C	540	A
State Route 113					

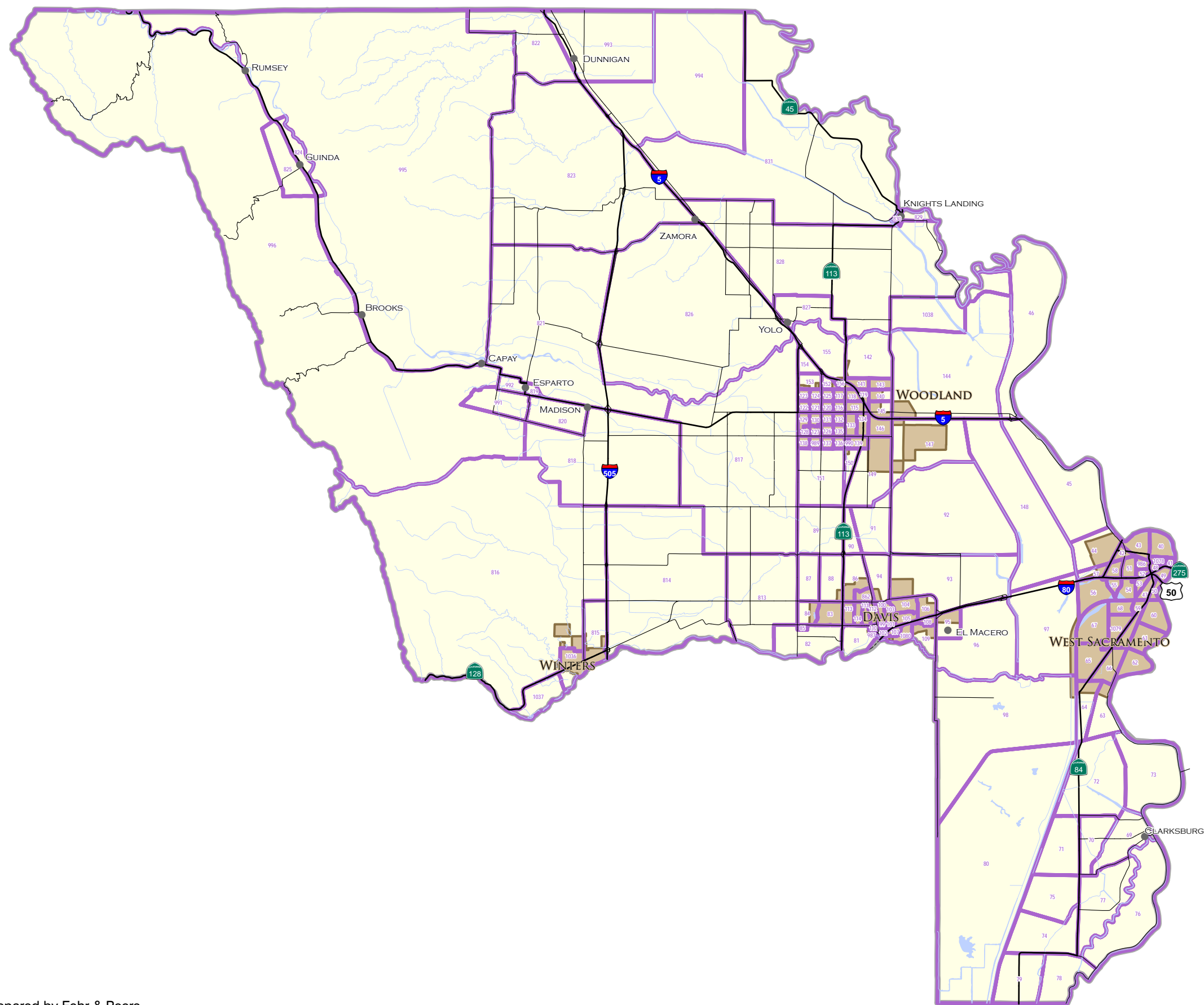
Southbound					
	1. Solano County Line to Covell Boulevard	E	E	1,280	B
	2. Covell Boulevard to Gibson Road	E	D	850	A
	3. Gibson Road to Interstate 5	E	C	420	A
State Route 113					
	4. Interstate 5 to County Road 17	E	D	320	C
	5. County Road 17 to County Road 13	E	D	90	A
	6. County Road 13 to County Road 102	E	D	150	B
	7. County Road 102 to State Route 45	E	D	700	C
State Route 128					
	1. Napa County Line to County Road 86	E	D	160	B
	2. County Road 86 to Railroad Avenue	E	D	700	C
	3. Railroad Avenue to Interstate 505	E	D	930	C
State Route 16					
	1. Arbuckle Road to County Road 78	C	D	120	B
	2. County Road 78 to County Road 85B	D	D	670	C
	3. County Road 85B to County Road 87	D	D	480	C
	4. County Road 87 to County Road 21A	D	D	710	C
	5. County Road 21A to Interstate 505	D	D	840	D
	6. Interstate 505 to County Road 94B	D	D	970	D
	7. County Road 94B to County Road 98	D	D	1,000	D
	8. Main Street to Interstate 5	D	D	460	C
State Route 45					
	1. State Route 113 to County Road 98A	D	D	70	A
State Route 84					
	1. Clarksburg Road to Gregory Avenue	Maintain Only	D	160	B

Notes:

¹ LOS (Level of Service) based on peak hour roadway segment thresholds developed using the Highway Capacity Manual methodology.

Bold italic highlight indicates that LOS exceeds applicable jurisdiction and/or CMP threshold.





LEGEND

- Unincorporated Cities
- ⬡ Yolo County Traffic Analysis Zones (TAZ)
- ⬢ Incorporated Cities
- ⬠ Yolo County Line



NOT TO SCALE

Traffic Analysis Zones
YOLO COUNTY GENERAL PLAN

2005 SACMET V.01 Traffic Model Validation Results - AM Peak Hour (for Counts 200 or Greater)

AM Peak
Hour

Iteration 9

number	segment	from	to	2005 Model Forecast	NB/EB 2004 Count	Forecast -Count	Difference Squared	Forecast /Count	Allowable Deviation	Within Deviation
45		County Road 93A	County Road 95	188	228	-40	1,600	0.82	0.60	Yes
46	County Road 31	County Road 95	County Road 98	213	235	-22	484	0.91	0.60	Yes
38		County Road 29	County Road 27	116	165	-49	2,401	0.70	0.60	Yes
37		County Road 27	County Road 24	150	188	-38	1,444	0.80	0.60	Yes
100	County Road 98	County Road 24	State Route 16	161	373	-212	44,944	0.43	0.60	Yes
16		Covell Boulevard	County Road 29	307	259	48	2,304	1.19	0.60	Yes
17		County Road 29	County Road 27	300	203	97	9,409	1.48	0.60	Yes
19		Interstate 5	County Road 17	351	169	182	33,124	2.08	0.60	No
20	County Road 102	County Road 17	State Route 113	157	257	-100	10,000	0.61	0.60	Yes
75		County Road 98	State Route 113	452	459	-7	49	0.98	0.60	Yes
76		State Route 113	County Road 102	642	624	18	336	1.03	0.44	Yes
77	Covell Boulevard	County Road 102	Mace Boulevard	749	580	169	28,561	1.29	0.45	Yes
50	Mace Boulevard	County Road 32D	Interstate 80	430	650	-220	48,400	0.66	0.43	Yes
87	Reed Avenue	Interstate 80	Jefferson Boulevard	770	744	26	676	1.03	0.42	Yes
44		Interstate 505	County Road 31	97	285	-188	35,344	0.34	0.60	No
78	Russell Boulevard	County Road 98	State Route 113	1,118	1,023	95	9,025	1.09	0.37	Yes
4		Colusa County Line	Interstate 505	659	686	-27	729	0.96	0.43	Yes
5		Interstate 505	County Road 13	388	508	-120	14,440	0.76	0.47	Yes
6		County Road 13	State Route 113 (East)	755	1,129	-374	139,502	0.67	0.35	Yes
7		State Route 113 (East)	County Road 102	1,597	1,504	93	8,696	1.06	0.31	Yes
8	Interstate 5	County Road 102	Sacramento County Line	1,767	1,749	18	324	1.01	0.30	Yes
12		Solano County Line	State Route 128	733	403	330	108,900	1.82	0.60	No
11		State Route 128	State Route 16	386	336	50	2,539	1.15	0.60	Yes
10	Interstate 505	State Route 16	County Road 14	286	211	76	5,700	1.36	0.60	Yes
1		Solano County Line	Mace Boulevard	3,259	4,014	-755	570,528	0.81	0.23	Yes
2	Interstate 80	County Road 32A	U.S. 50	4,537	5,552	-1,015	1,030,563	0.82	0.20	Yes
13		Solano County Line	Covell Boulevard	1,339	1,085	254	64,431	1.23	0.36	Yes
3		Covell Boulevard	Gibson Road	1,050	732	318	100,965	1.43	0.42	No
14		Gibson Road	Interstate 5	182	279	-97	9,377	0.65	0.60	Yes
21	State Route 113	County Road 102	State Route 45	173	222	-49	2,368	0.78	0.60	Yes
47		County Road 86	Railroad Avenue	409	337	72	5,232	1.21	0.60	Yes
48	State Route 128	Railroad Avenue	Interstate 505	674	498	176	30,859	1.35	0.60	Yes
32		County Road 78	County Road 85B	182	195	-13	171	0.93	0.60	Yes
27		County Road 87	County Road 21A	217	214	3	9	1.01	0.60	Yes
33		County Road 21A	Interstate 505	323	365	-42	1,722	0.89	0.60	Yes
34		Interstate 505	County Road 94B	215	368	-153	23,278	0.58	0.60	Yes
35		County Road 94B	County Road 98	270	394	-124	15,459	0.68	0.60	Yes
36	State Route 16	Main Street	Interstate 5	32	227	-195	38,025	0.14	0.60	No

25,634 27,448

Model/Count Ratio = 0.93
Percent Within Caltrans Maximum Deviation = 87% >75%
Percent Root Mean Square Error = 35% <40%
Correlation Coefficient = 0.98 >0.88
Average % Error = 7%

Links Within Deviation = 33
 Links Outside Deviation = 5
 Total Counts = 38

Summary of Both Directions - AM Peak Hour

Model/Count Ratio = 0.97
Percent Within Caltrans Maximum Deviation = 87% >75%
Percent Root Mean Square Error = 37% <40%
Correlation Coefficient = 0.97 >0.88
Average % Error = 3%

Links Within Deviation = 65
 Links Outside Deviation = 10
 Total Counts = 75

2005 SACMET V.01 Traffic Model Validation Results - AM Peak Hour (for Coun

Iteration 9

number	segment	from	to	AM Peak Hour						
				2005 Model Forecast	SB/WB 2004 Count	Forecast -Count	Difference Squared	Forecast /Count	Allowable Deviation	Within Deviation
45		County Road 93A	County Road 95	169	108	61	3,721	1.56	0.60	Yes
46	County Road 31	County Road 95	County Road 98	153	156	-3	9	0.98	0.60	Yes
38		County Road 29	County Road 27	181	207	-26	676	0.87	0.60	Yes
37		County Road 27	County Road 24	264	277	-13	169	0.95	0.60	Yes
100	County Road 98	County Road 24	State Route 16	209	302	-93	8,556	0.69	0.60	Yes
16		Covell Boulevard	County Road 29	288	212	76	5,776	1.36	0.60	Yes
17		County Road 29	County Road 27	297	168	129	16,641	1.77	0.60	No
19		Interstate 5	County Road 17	350	244	106	11,236	1.43	0.60	Yes
20	County Road 102	County Road 17	State Route 113	376	350	26	676	1.07	0.60	Yes
75		County Road 98	State Route 113	348	315	33	1,089	1.10	0.60	Yes
76		State Route 113	County Road 102	638	707	-69	4,738	0.90	0.42	Yes
77	Covell Boulevard	County Road 102	Mace Boulevard	678	472	206	42,436	1.44	0.60	Yes
50	Mace Boulevard	County Road 32D	Interstate 80	276	306	-30	900	0.90	0.60	Yes
87	Reed Avenue	Interstate 80	Jefferson Boulevard	628	560	68	4,624	1.12	0.45	Yes
44		Interstate 505	County Road 31	74	113	-39	1,521	0.65	0.60	Yes
78	Russell Boulevard	County Road 98	State Route 113	397	353	44	1,936	1.12	0.60	Yes
4		Colusa County Line	Interstate 505	895	796	99	9,801	1.12	0.41	Yes
5		Interstate 505	County Road 13	607	664	-57	3,268	0.91	0.43	Yes
6		County Road 13	State Route 113 (East)	1,057	1,192	-135	18,225	0.89	0.34	Yes
7		State Route 113 (East)	County Road 102	1,893	1,762	132	17,292	1.07	0.30	Yes
8	Interstate 5	County Road 102	Sacramento County Line	2,337	1,724	613	375,360	1.36	0.30	No
12		Solano County Line	State Route 128	1,095	517	578	334,084	2.12	0.47	No
11		State Route 128	State Route 16	435	356	79	6,217	1.22	0.60	Yes
10	Interstate 505	State Route 16	County Road 14	308	214	94	8,899	1.44	0.60	Yes
1		Solano County Line	Mace Boulevard	3,119	4,103	-984	967,272	0.76	0.23	No
2	Interstate 80	County Road 32A	U.S. 50							
13		Solano County Line	Covell Boulevard	1,913	2,233	-320	102,507	0.86	0.27	Yes
3		Covell Boulevard	Gibson Road	1,334	1,211	123	15,191	1.10	0.33	Yes
14		Gibson Road	Interstate 5	178	361	-183	33,306	0.49	0.60	Yes
21	State Route 113	County Road 102	State Route 45	416	355	61	3,721	1.17	0.60	Yes
47		County Road 86	Railroad Avenue	242	157	85	7,282	1.54	0.60	Yes
48	State Route 128	Railroad Avenue	Interstate 505	380	259	121	14,641	1.47	0.60	Yes
32		County Road 78	County Road 85B	259	235	24	576	1.10	0.60	Yes
27		County Road 87	County Road 21A	168	255	-87	7,569	0.66	0.60	Yes
33		County Road 21A	Interstate 505	264	311	-47	2,209	0.85	0.60	Yes
34		Interstate 505	County Road 94B	182	292	-110	12,037	0.62	0.60	Yes
35		County Road 94B	County Road 98	186	376	-190	35,973	0.50	0.60	Yes
36	State Route 16	Main Street	Interstate 5	44	203	-159	25,281	0.22	0.60	No

22,638 22,423

Model/Count Ratio = 1.01
 Percent Within Caltrans Maximum Deviation = 86% >75%
 Percent Root Mean Square Error = 39% <40%
 Correlation Coefficient = 0.95 >0.88
 Average % Error = -1%
 Links Within Deviation = 32
 Links Outside Deviation = 5
 Total Counts = 37

Summary of Bot

Model
 Percent Within Caltrans Maximum Deviation
 Percent Root Mean Square Error
 Correlation Coefficient
 Average % Error

2005 SACMET V.01 Traffic Model Validation Results - PM Peak Hour (for Counts 200 or Greater)

PM Peak
Hour

Iteration 9

number	segment	from	to	2005 Model Forecast	NB/EB 2004 Count	Forecast -Count	Difference Squared	Forecast /Count	Allowable Deviation	Within Deviation
45		County Road 93A	County Road 95	176	157	19	361	1.12	0.60	Yes
46	County Road 31	County Road 95	County Road 98	158	172	-14	196	0.92	0.60	Yes
39		County Road 31	County Road 29	197	219	-22	484	0.90	0.60	Yes
38		County Road 29	County Road 27	198	236	-38	1,444	0.84	0.60	Yes
37		County Road 27	County Road 24	301	230	72	5,112	1.31	0.60	Yes
100	County Road 98	County Road 24	State Route 16	239	361	-122	14,884	0.66	0.60	Yes
16		Covell Boulevard	County Road 29	348	190	158	24,964	1.83	0.60	No
17		County Road 29	County Road 27	335	277	58	3,364	1.21	0.60	Yes
18		County Road 27	Interstate 5	285	247	38	1,444	1.15	0.60	Yes
19		Interstate 5	County Road 17	497	268	229	52,441	1.85	0.60	No
20	County Road 102	County Road 17	State Route 113	503	430	73	5,329	1.17	0.60	Yes
75		County Road 98	State Route 113	411	706	-295	86,730	0.58	0.42	Yes
76		State Route 113	County Road 102	793	932	-139	19,367	0.85	0.38	Yes
77	Covell Boulevard	County Road 102	Mace Boulevard	825	497	328	107,584	1.66	0.60	No
84	East Street	Gibson Road	Interstate 5	173	310	-137	18,701	0.56	0.60	Yes
81	Gibson Road	County Road 98	State Route 113	624	783	-159	25,281	0.80	0.41	Yes
88	Harbor Boulevard	U.S. 50	Reed Avenue	468	417	51	2,601	1.12	0.60	Yes
50		County Road 32D	Interstate 80	353	457	-104	10,816	0.77	0.60	Yes
83	Main Street	County Road 98	State Route 113	925	1,050	-125	15,708	0.88	0.36	Yes
31	Old River Road	County Road 127	County Road 118	320	233	87	7,569	1.37	0.60	Yes
87	Reed Avenue	Interstate 80	Jefferson Boulevard	906	863	43	1,849	1.05	0.39	Yes
44		Interstate 505	County Road 31	96	147	-51	2,601	0.65	0.60	Yes
78	Russell Boulevard	County Road 98	State Route 113	586	708	-122	14,884	0.83	0.42	Yes
4		Colusa County Line	Interstate 505	1,067	985	82	6,724	1.08	0.38	Yes
5		Interstate 505	County Road 13	736	743	-7	47	0.99	0.42	Yes
6		County Road 13	State Route 113 (East)	1,179	1,194	-15	235	0.99	0.34	Yes
7		State Route 113 (East)	County Road 102	2,307	1,756	551	303,821	1.31	0.30	No
8	Interstate 5	County Road 102	Sacramento County Line	2,636	1,794	842	708,964	1.47	0.30	No
12		Solano County Line	State Route 128	1,270	680	590	347,707	1.87	0.43	No
11		State Route 128	State Route 16	513	430	83	6,838	1.19	0.60	Yes
10		State Route 16	County Road 14	356	286	71	4,970	1.25	0.60	Yes
9	Interstate 505	County Road 14	Interstate 5	331	242	89	7,862	1.37	0.60	Yes
1		Solano County Line	Mace Boulevard	3,402	4,365	-963	926,406	0.78	0.22	No
2	Interstate 80	County Road 32A	U.S. 50	5,885	5,571	314	98,491	1.06	0.20	Yes
13		Solano County Line	Covell Boulevard	2,249	2,207	42	1,792	1.02	0.27	Yes
3		Covell Boulevard	Gibson Road	1,668	1,317	351	123,341	1.27	0.32	Yes
14		Gibson Road	Interstate 5	276	336	-60	3,640	0.82	0.60	Yes
21	State Route 113	County Road 102	State Route 45	555	435	120	14,400	1.28	0.60	Yes
47		County Road 86	Railroad Avenue	290	302	-12	136	0.96	0.60	Yes
48	State Route 128	Railroad Avenue	Interstate 505	465	377	88	7,744	1.23	0.60	Yes
32		County Road 78	County Road 85B	368	366	2	5	1.01	0.60	Yes
15		County Road 85B	County Road 87	292	226	66	4,356	1.29	0.60	Yes
27		County Road 87	County Road 21A	276	402	-126	15,876	0.69	0.60	Yes
33		County Road 21A	Interstate 505	355	407	-52	2,652	0.87	0.60	Yes
34		Interstate 505	County Road 94B	241	451	-210	44,160	0.53	0.60	Yes
35		County Road 94B	County Road 98	262	486	-224	50,027	0.54	0.60	Yes
36	State Route 16	Main Street	Interstate 5	64	243	-179	32,041	0.26	0.60	No
86	State Route 84	Gregory Avenue	U.S. 50	844	682	162	26,244	1.24	0.43	Yes
				37,604	36,171					

Model/Count Ratio = 1.04
Percent Within Caltrans Maximum Deviation = 83% >75%
Percent Root Mean Square Error = 34% <40% Links Within Deviation = 40
Correlation Coefficient = 0.97 >0.88 Links Outside Deviation = 8
Average % Error = -4% Total Counts = 48

Summary of Both Directions - PM Peak Hour

Model/Count Ratio = 1.03
Percent Within Caltrans Maximum Deviation = 82% >75%
Percent Root Mean Square Error = 32% <40% Links Within Deviation = 78
Correlation Coefficient = 0.97 >0.88 Links Outside Deviation = 17
Average % Error = -3% Total Counts = 95

2005 SACMET V.01 Traffic Model Validation Results - PM Peak Hour (for Count)

PM Peak
Hour

Iteration 9

number	segment	from	to	2005 Model Forecast	SB/WB 2004 Count	Forecast -Count	Difference Squared	Forecast /Count	Allowable Deviation	Within Deviation
45		County Road 93A	County Road 95	263	217	46	2,116	1.21	0.60	Yes
46	County Road 31	County Road 95	County Road 98	281	259	22	484	1.08	0.60	Yes
39		County Road 31	County Road 29	138	194	-56	3,136	0.71	0.60	Yes
38		County Road 29	County Road 27	144	223	-79	6,241	0.65	0.60	Yes
37		County Road 27	County Road 24	192	218	-26	650	0.88	0.60	Yes
100	County Road 98	County Road 24	State Route 16	202	353	-151	22,650	0.57	0.60	Yes
16		Covell Boulevard	County Road 29	392	325	67	4,489	1.21	0.60	Yes
17		County Road 29	County Road 27	418	231	187	34,969	1.81	0.60	No
18		County Road 27	Interstate 5	367	198	169	28,561	1.85	0.60	No
19		Interstate 5	County Road 17	414	202	212	44,944	2.05	0.60	No
20	County Road 102	County Road 17	State Route 113	203	249	-46	2,116	0.82	0.60	Yes
75		County Road 98	State Route 113	593	960	-367	134,689	0.62	0.38	No
76		State Route 113	County Road 102	781	943	-162	26,136	0.83	0.38	Yes
77	Covell Boulevard	County Road 102	Mace Boulevard	857	806	51	2,642	1.06	0.40	Yes
84	East Street	Gibson Road	Interstate 5	249	312	-63	3,969	0.80	0.60	Yes
81	Gibson Road	County Road 98	State Route 113	910	927	-17	289	0.98	0.38	Yes
88	Harbor Boulevard	U.S. 50	Reed Avenue	314	492	-178	31,684	0.64	0.60	Yes
50		County Road 32D	Interstate 80	515	663	-148	21,904	0.78	0.43	Yes
83	Main Street	County Road 98	State Route 113	1,007	1,073	-66	4,356	0.94	0.36	Yes
31	Old River Road	County Road 127	County Road 118	150	157	-7	49	0.96	0.60	Yes
87	Reed Avenue	Interstate 80	Jefferson Boulevard	1,300	807	493	243,049	1.61	0.40	No
44		Interstate 505	County Road 31	76	291	-215	46,225	0.26	0.60	No
78	Russell Boulevard	County Road 98	State Route 113	1,317	1,076	241	58,081	1.22	0.36	Yes
4		Colusa County Line	Interstate 505	791	825	-34	1,156	0.96	0.40	Yes
5		Interstate 505	County Road 13	472	625	-153	23,307	0.76	0.44	Yes
6		County Road 13	State Route 113 (East)	1,110	1,168	-58	3,364	0.95	0.34	Yes
7		State Route 113 (East)	County Road 102	1,887	1,820	67	4,543	1.04	0.29	Yes
8	Interstate 5	County Road 102	Sacramento County Line	2,212	2,074	138	18,952	1.07	0.28	Yes
12		Solano County Line	State Route 128	898	515	383	146,817	1.74	0.47	No
11		State Route 128	State Route 16	455	395	60	3,637	1.15	0.60	Yes
10		State Route 16	County Road 14	333	272	61	3,741	1.23	0.60	Yes
9	Interstate 505	County Road 14	Interstate 5	319	200	119	14,161	1.60	0.60	Yes
1		Solano County Line	Mace Boulevard	4,045	4,491	-446	198,619	0.90	0.22	Yes
2	Interstate 80	County Road 32A	U.S. 50							
13		Solano County Line	Covell Boulevard	1,662	1,325	338	113,906	1.25	0.32	Yes
3		Covell Boulevard	Gibson Road	1,367	847	520	270,192	1.61	0.40	No
14		Gibson Road	Interstate 5	216	238	-22	477	0.91	0.60	Yes
21	State Route 113	County Road 102	State Route 45	231	262	-31	961	0.88	0.60	Yes
47		County Road 86	Railroad Avenue	442	395	47	2,240	1.12	0.60	Yes
48	State Route 128	Railroad Avenue	Interstate 505	723	577	146	21,219	1.25	0.45	Yes
32		County Road 78	County Road 85B	344	355	-11	121	0.97	0.60	Yes
15		County Road 85B	County Road 87	272	265	7	49	1.03	0.60	Yes
27		County Road 87	County Road 21A	306	268	38	1,444	1.14	0.60	Yes
33		County Road 21A	Interstate 505	423	515	-92	8,464	0.82	0.47	Yes
34		Interstate 505	County Road 94B	274	515	-241	58,081	0.53	0.47	Yes
35		County Road 94B	County Road 98	366	461	-95	9,025	0.79	0.60	Yes
36	State Route 16	Main Street	Interstate 5	47	192	-145	21,025	0.24	0.60	No
86	State Route 84	Gregory Avenue	U.S. 50	1,335	1,203	132	17,424	1.11	0.33	Yes

31,613 30,975

Model/Count Ratio = 1.02
 Percent Within Caltrans Maximum Deviation = 81% >75%
 Percent Root Mean Square Error = 29% <40%
 Correlation Coefficient = 0.96 >0.88
 Average % Error = -2%
 Links Within Deviation = 38
 Links Outside Deviation = 9
 Total Counts = 47

Summary of Bot

Model
 Percent Within Caltrans Maximum
 Percent Root Mean Square Error
 Correlation Coefficient
 Average % Error