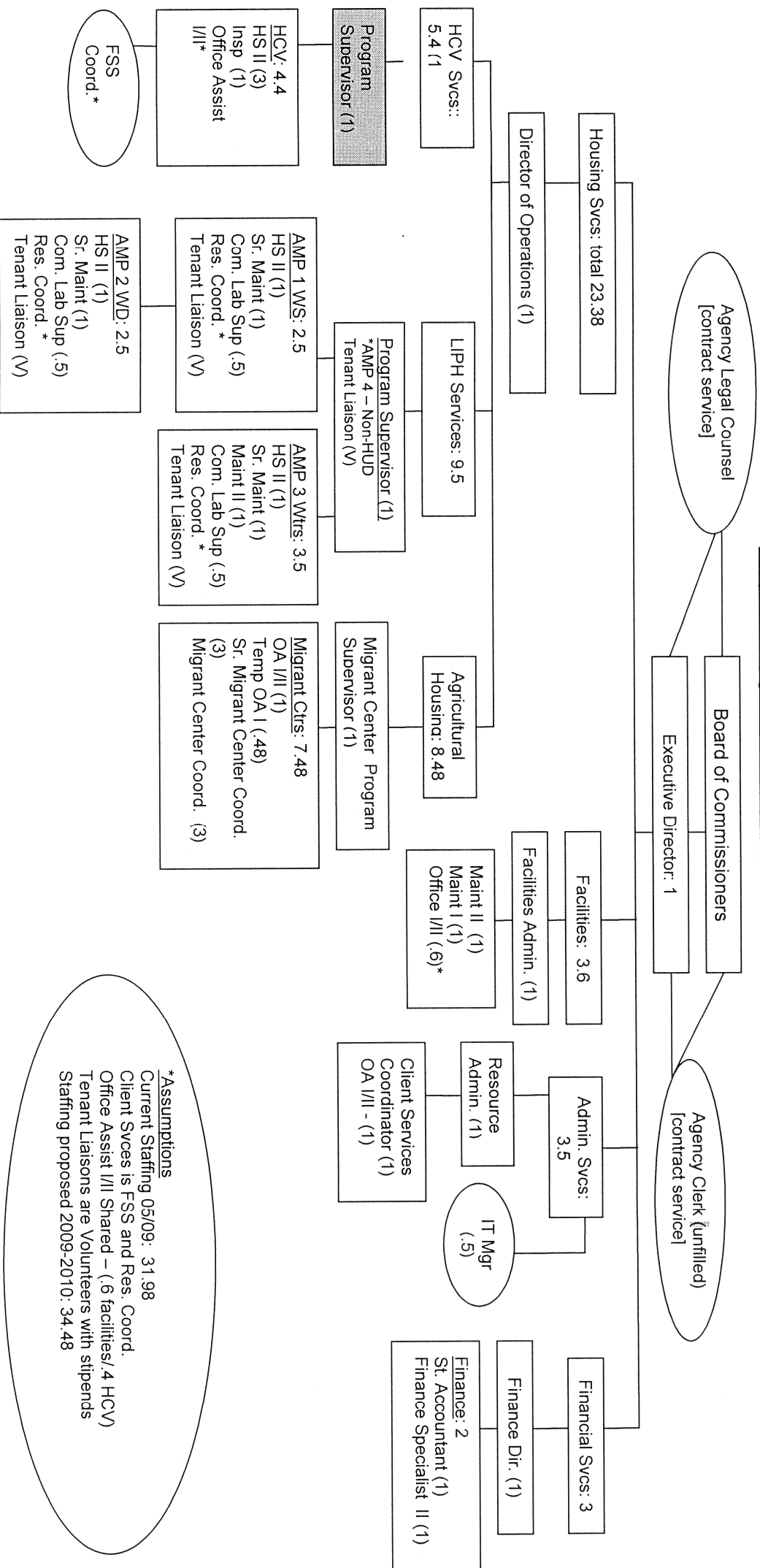


Proposed Organization Chart - Yolo County Housing 2009



**\*Assumptions**  
 Current Staffing 05/09: 31.98  
 Client Svcs is FSS and Res. Coord.  
 Office Assist I/II Shared - (.6 facilities/4 HCV)  
 Tenant Liaisons are Volunteers with stipends  
 Staffing proposed 2009-2010: 34.48